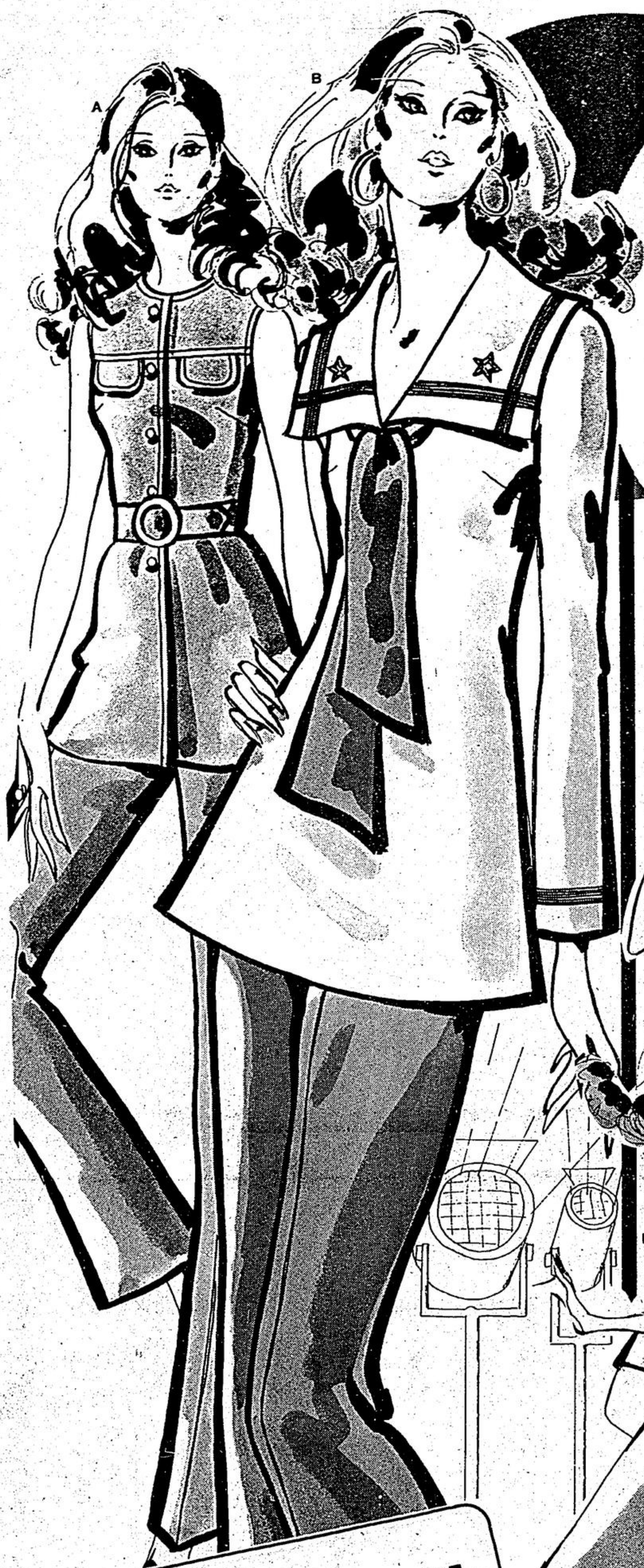


Woolco ON STAGE FOR Spring '72!



(A) Fortrel pant suit for junior. Sailor style top with front tie and long sleeves. Braid trim on collar and sleeves. Plain pull on pants. Navy/white, White/navy. Sizes 7 to 15. **19⁹⁵** each

(B) Junior fortrel pant suit. Sleeveless top with "U" neck, front yoke, 2 front tabs, self sash with buckle and buttons. Plain pull on pants. Pink, Lilac, Navy. Sizes 7 to 15. **18⁹⁵** each

Keep In Style With A Woolco Charge!



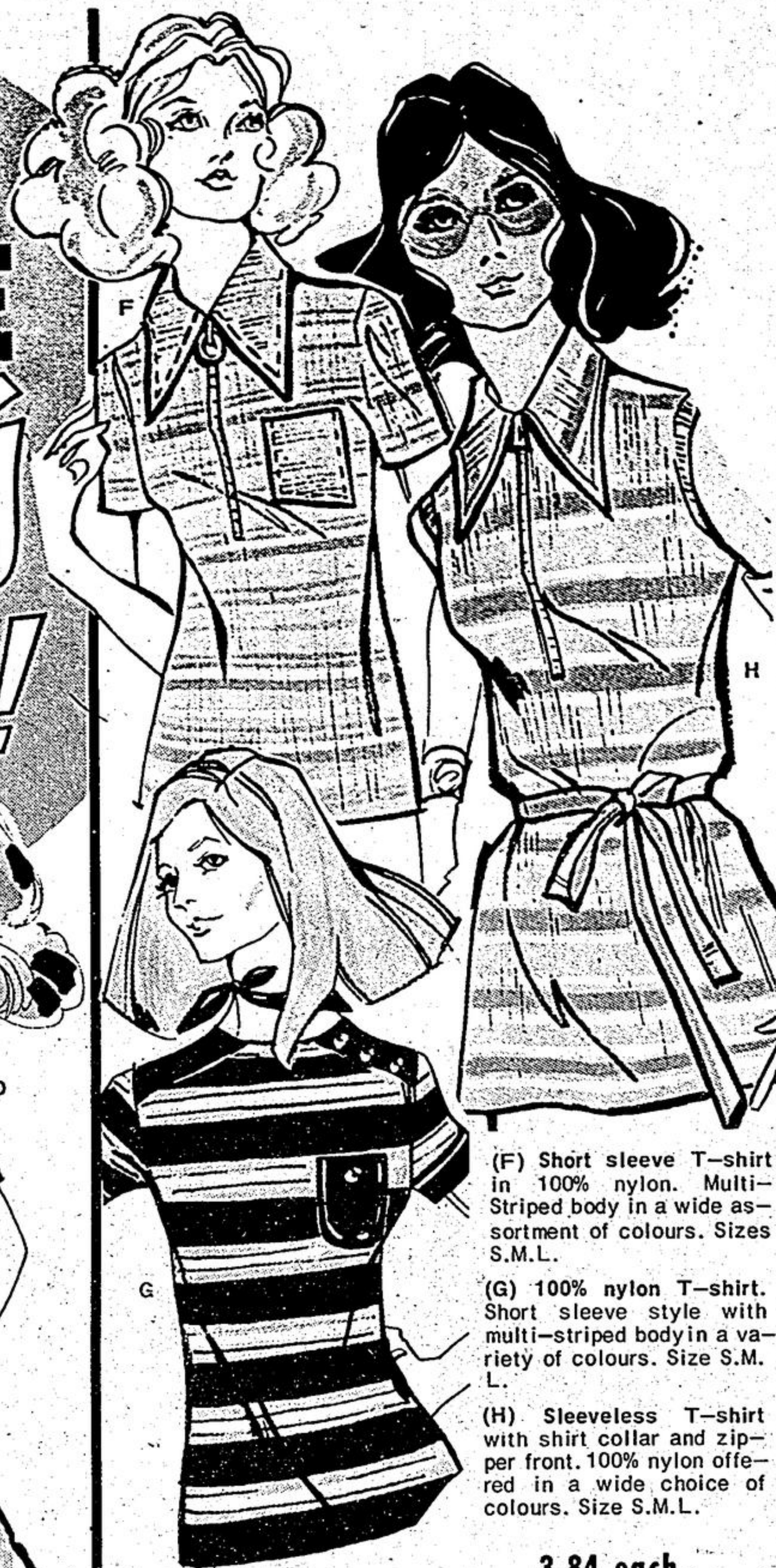
(C) Ladies' crimp knit dress Short sleeve style with jewel neck and front buttons. Combination of Beige with Shrimp, Turquoise or Lilac. Sizes 10 to 18.

(D) Short sleeve crimp knit dress. Scoop neck, contrast front yoke and belt. Brown/Beige, Navy/White, Turquoise/white. Sizes 10 to 18.

(E) Ladies' crimp knit dress with jewel neck, short sleeves, front buttons and round hem. Combination of White with Royal, Red, navy. Sizes 10 to 18.

YOUR CHOICE

11⁸⁶
each



(F) Short sleeve T-shirt in 100% nylon. Multi-Striped body in a wide assortment of colours. Sizes S.M.L.

(G) 100% nylon T-shirt. Short sleeve style with multi-striped body in a variety of colours. Size S.M.L.

(H) Sleeveless T-shirt with shirt collar and zipper front. 100% nylon offered in a wide choice of colours. Size S.M.L.

3.84 each

2 for \$7



Long sleeve T-shirt with front appliques. Si-Tropaz look in poly and cotton navy, red or lilac. Sizes S.M.L.

5⁸⁴
each

Printed nylon T-shirt Long sleeve style with flare "U" neck and side slits. Brown, navy, red, lilac. Sizes 12 to 15.

7⁷⁶
each

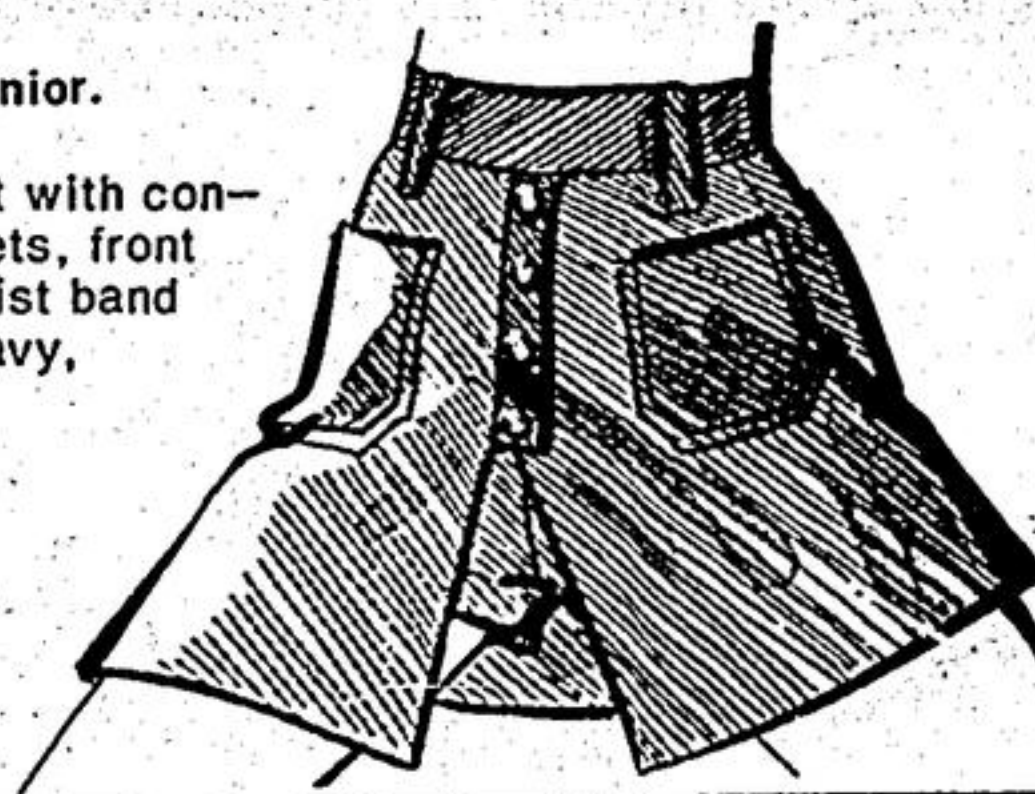
Short sleeve pull on T-shirt with front button opening. 100% acrylic with front printed design. Size S. M. L.

5⁸⁴
each

Hot pant skirt for junior.

Brushed cotton skirt with contrasting patch pockets, front tab, buttons and waist band with loops. Pink/Navy, Brown/Gold, Navy/Gold. Size 7 to 15.

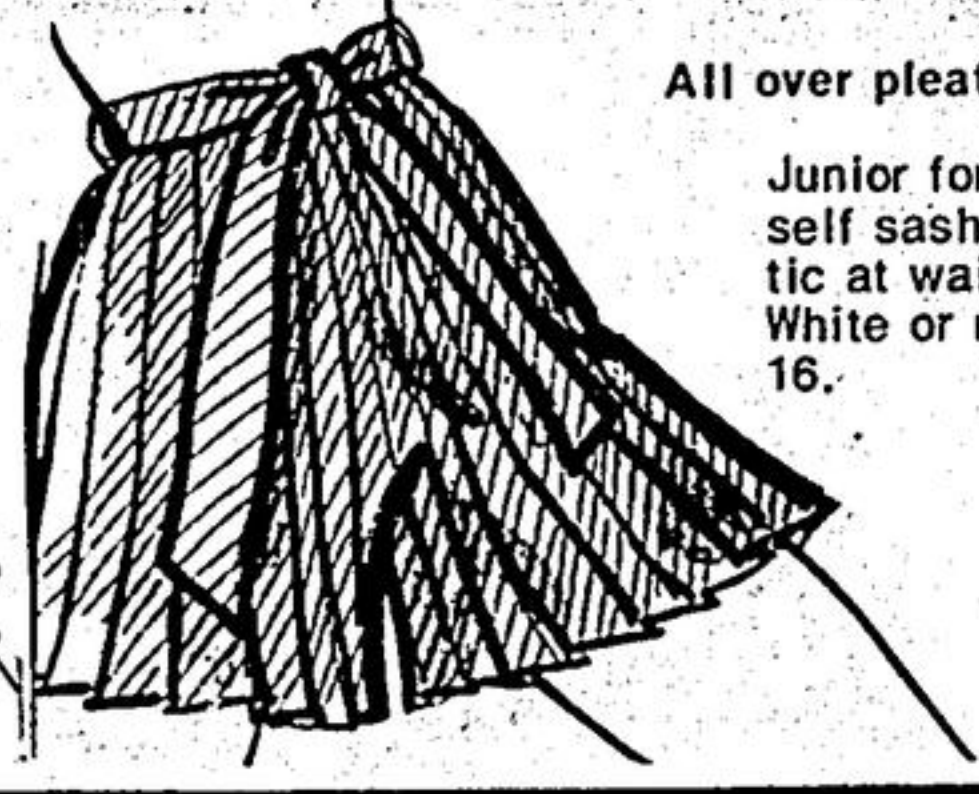
6⁹⁵
each



All over pleated hot pant skirt

Junior fortrel skirt comes with self sash belt. Inserted elastic at waist and back zipper. White or navy in sizes 8 to 16.

8⁹⁵
each



Woolco
Department Stores

**Because We're Woolco...
Your Shopping Costs You Less!
KENNEDY RD. & SHEPPARD AVE.**

STORE HOURS:
Mon. to Fri.
10 a.m. to 10 p.m.
Sat. 9 a.m. to 10 p.m.