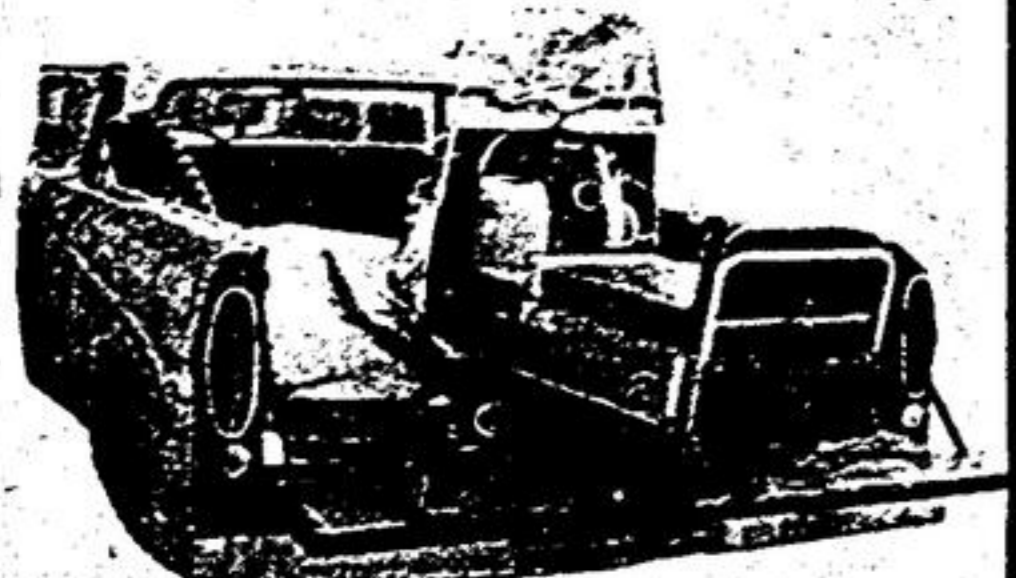


We Deliver The Best!



Snow Cruiser
We're selling out all '71's at reduced prices! Hurry down... there's only a few left.

Markham BOAT SALES

#7 Hwy. at Albert
MARKHAM
294-4665

A winner says: "I'm as I ought to be". A bad as a lot of other good, but not as good loser says: "I'm not as people".

A yellow streak at over 75 m.p.h.

STOUFFVILLE - A young mechanic, Glenn Avery of Stouffville, is considered by many to be the area's top snowmobile racer. Glenn, who works for Stouffville Ski-Doo sales, drives the company's machines in competition during weekends. He is entered mainly in Ontario Snowmobile Racing Federation "A sanction" events, which attract top professionals from all over North America. One of his most recent accomplishments was entering finals of the OSRF's race at Mosport, against a field of more than 1,500 drivers.

Snowmobile Club

Few complaints says president

STOUFFVILLE - The Whitchurch - Stouffville Snowmobile Club has made good progress, according to its president, Marvin Betz. The Club presently has 130 members and, while Mr. Betz admits "there are still a lot of people who haven't joined," he feels optimistic about the 2-month-old club. Members are taking care of "trouble spots", where residents have complained about snowmobilers. The Club was formed last fall in response to a bylaw passed by Council; it was agreed that the Club members would be allowed to try enforcing the bylaw's provisions, including a curfew. "Complaints seem to be down from last year," said Mr. Betz. "But we haven't had as much snow. That's just as well - it's given us some time to organize." Most complaints, he said, come from the rural area and concern such problems as fence-cutting. Mr. Betz suspects that this is often due to out-of-town snowmobilers, who don't know their way around. At an informed guess, Mr. Betz believes there are at least 2,000 snowmobiles in Whitchurch - Stouffville. If you count everyone who rides one of the vehicles, probably 50 percent of the population could be classed as snowmobilers. There have been no serious accidents locally this season, Mr. Betz claimed. The Club is trying to promote safety and courtesy among its members, and to educate people generally about bylaw restrictions. Mr. Betz points out that it was the Club which insisted on an anti-noise clause in the Town's bylaw. "There will always be a few people who won't obey anybody," concedes Mr. Betz, "a curfew doesn't solve all the problems." Restrictions on snowmobiles are gradually becoming lighter, he said. While helmets are not yet mandatory for riders, he expects they will be "within a year or two". Provincial regulations now control lights, brakes and noise levels; Mr. Betz expects such measures to become more stringent as time goes by. The average price for a snowmobile, he said, is about \$900. He feels the machines are becoming safer and more comfortable each year. In addition to controlling the use of machines, Snowmobile Club members will also be participating in social events. A barbecue is presently in the planning stage. According to provincial figures, the sale of snowmobiles is increasing. It looks like the Club, hastily set up last season, will be around for many years to come.

The Federation holds about 7 "A sanction" races per season. These events require a large entry fee, and generous purses draw top drivers. The "B sanction" races are more frequent, and offer smaller prizes. For competition, Glenn favors the Ski-Doo 'Blizzard'. This is purely a racing machine, he said, and of little or no use for trail-riding. On trails, he uses a Ski-Doo '440' capable of 75 miles per hour. "I like the medium-range TNT as well as any machine," he said. A racing-equipped snowmobile is an expensive proposition. Ski-Doo's '640' which currently holds the speed record of 108 miles per hour, costs a dealer about \$2,000. Various events are entered by racers. These are usually run on an oval-shaped track, although cross-country events and quarter-mile speed runs are exceptions. "I think motorcycle racing is far more dangerous," said Glenn. He admits that snowmobile racing is not for the amateur.

1972 SKI-DOO CLEARANCE SALE

- 1 Elan Manual 12 H.P.
- 1 300cc Olympique 15 H.P. Manual
- 2 335cc Olympique 20 H.P. Manual
- 1 335cc Olympique 20 H.P. Electric Start
- 2 399cc Olympique 24 H.P. Twin Cyl.
- 2 292 TNT 20 H.P. Manual
- 2 340 TNT 28 H.P. Manual Twin
- 1 440 TNT 38 H.P. Manual Twin
- 1 440 Nordic Electric 28 H.P.

AT SPECIALLY REDUCED PRICES

GORD'S MARINE

CLAREMONT

649-2007

CLEAROUT OF ALL WINTER SPORTS EQUIPMENT! YOUR CHANCE TO SAVE!

OPEN: Mon., Tues., Wed. 9.30-8; Thurs. & Fri. 9.30-9; Sat. 9-6.

SNOWMOBILE EQUIPMENT

Get more fun with your machine with equipment from Matthew's. We have helmets, suits, goggles, mitts and a few pairs of boots left. Everything must go!

30% OFF

FIGURE SKATES

In women's and girls' sizes. Daoust skates — the mark of fine craftsmanship.

30% OFF

TEAM SUPPLIES
CRESTS
TROPHIES
UNIFORMS FOR ALL SPORTS

HOCKEY SKATES

Daoust hockey skates in Men's and Boys' sizes. Quality craftsmanship insures safety and comfort. Tremendous savings!

30% OFF

SEE OUR GRAB TABLE FOR TRACK SHOES, GOLF SHOES AND SKATES AT LOW, LOW BARGAIN BASEMENT PRICES!

HOCKEY EQUIPMENT

Is your boy outgrowing or outwearing his hockey equipment? This is your opportunity to get pants, sweaters and sticks...

ALL AT LOW PRICES

MATTHEW'S SPORTING GOODS
6 WASHINGTON ST., MARKHAM
TELEPHONE 294-4355

Warehouse Sale

SAVE 10% BANNED SAVE 20%

Ever See 100 POLARIS In A Line-up other than on a Track We have them and they are **WINNERS**

PICK YOUR MODEL

'Colts' - 'Free Airs' - 'TX's' - 'Mustangs' - 'Chargers'

SAVE! SAVE! SAVE!

STOUFFVILLE TRAILER LIMITED

Hwy. 48, North of Markham
640-1411 — 297-1411

Late Joyce McClennan Miss Joyce McClennan, formerly Assistant to the Dean of the Law Faculty, University of Toronto, passed away Jan. 22. She is survived by her sister, Mrs. Leslie Storey, and a brother, Donald McClennan, both Markham, R.R.1.