

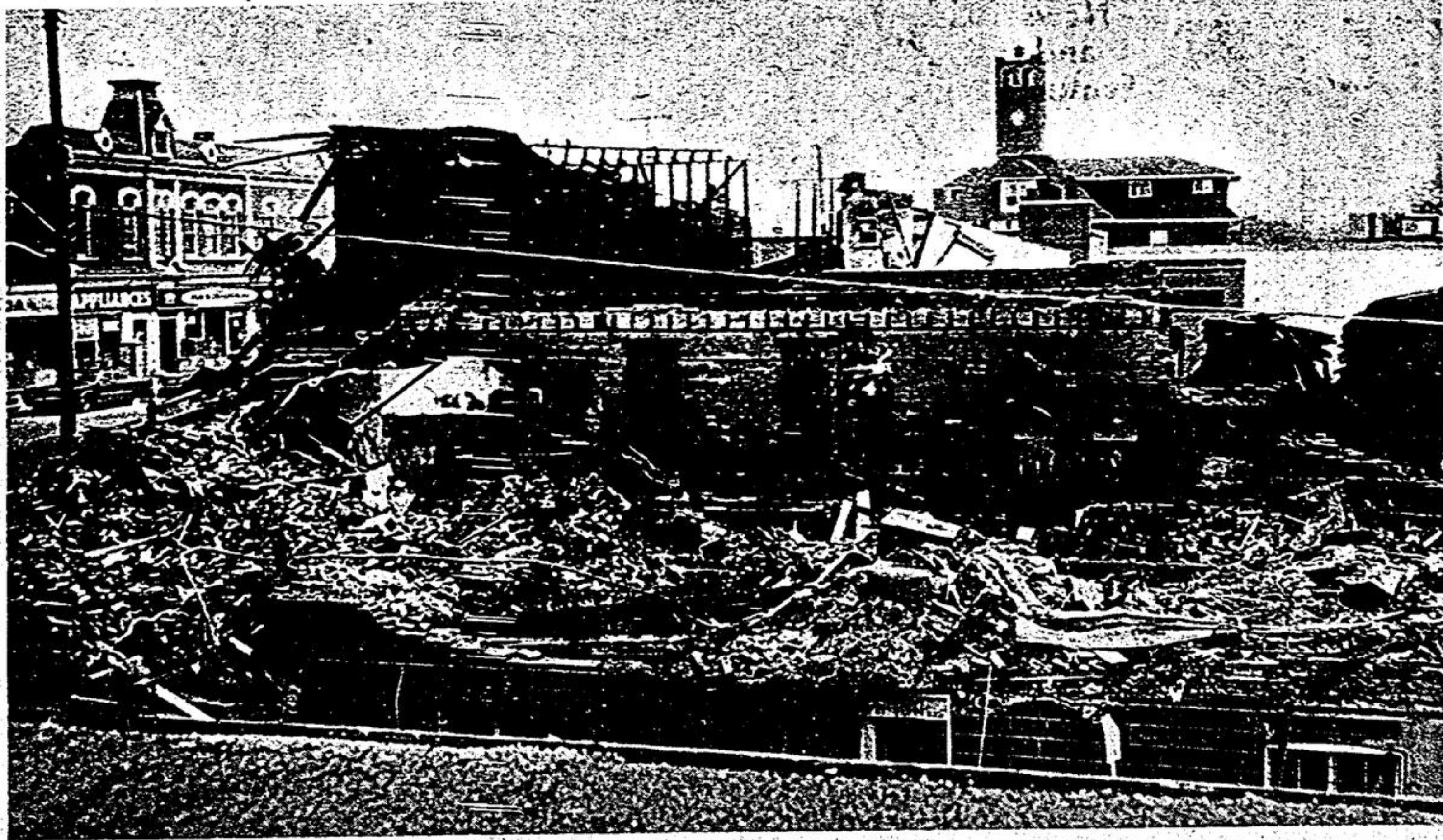
# 'I thought we'd had it' - asst. postmaster

STOUFFVILLE — "When the west wall of the Ratcliff Building went down, I thought we'd had it".

These were the thoughts of Asst. Postmaster, Howard Smith, four days following the disastrous fire on Main Street, Nov. 9. The Post Office and the Bank of Nova Scotia were the two closest buildings to the blaze. However, due to the direction of the wind and the height of the Ratcliff structure, the Post Office was in more imminent danger.

Mr. Smith took every precaution. He had all mailbags removed to a south-west loading platform, for quick collection.

At one point, six streams of water were sprayed over the roof



Looking east from the roof of the Stouffville Post Office, provides this view of the gutted Ratcliff Block, Main and Market Streets. At the height of the blaze, Nov. 9, it was feared the Post Office itself might go. Insurance adjusters have declared the business premises 'a total loss'. Clean-up operations will begin soon. —Jas. Thomas.

## Find photo album

STOUFFVILLE — While most material things destroyed in a fire, like the one that struck Stouffville, Nov. 9, can be replaced, there are certain items with value that cannot be measured in dollars and cents.

One of these was a photo album treasured by Mr. and Mrs. David Ku and family, operators of the Pine Tree Restaurant.

It was located, in the remains by Lloyd Morris, O'Brien Avenue, quite well preserved, in spite of water, smoke and flames. He gave it to Mr. and Mrs. Ku, now residing on Rose Avenue.

## Reservoir dropped only three inches

STOUFFVILLE — Mayor Ken Laushway revealed that the town's water system held up well under demands imposed by the Nov. 9 fire.

At Council, Nov. 12, the Mayor mentioned the large number of fire brigades that assisted at the scene and the "hundreds" of gallons per minute of water pumped onto the

## A 'little community' Loses everything

STOUFFVILLE — Forced to abandon your home of 5 years, leaving everything behind, is a sad experience.

Mrs. Mary Risebrough, an apartment resident in the Ratcliff Block, had no alternative.

It was a telephone call from Mrs. Charlotte Florence that alerted Mrs. Risebrough, combined with a pounding on the door. Mrs. Risebrough was already up and dressed, having smelled smoke earlier. Even so, she escaped without being able to save anything.

She was luckier than some — or better prepared — as the contents of her apartment were insured.

## transferred to Aurora. But now, everything's back to normal and Howard Smith can now take a minute to talk to his customers. As for Tuesday, Nov. 9, he readily admits "It's the first time anything like that ever happened to me"

STOUFFVILLE — The real blow came in the breakup of 'a little community', enjoyed by all residents in the building. Mrs. Risebrough's daughter, Mrs. Ethel Wilson, explained. "The older ladies there used to call on one another for tea, or go shopping together. It was like a family".

Mrs. Risebrough is presently staying with another daughter, Mrs. Bruce Fockler, Ringwood.



### Meet me.

And all the other animals. And enjoy all our new sights and sounds.

Friday, November 12 through Saturday, November 20. Open 8:00 a.m. to 10:00 p.m. Monday to Saturday. Opens 1:30 p.m. Sunday, November 14.

By car—ample parking in Exhibition grounds. Streetcar—Bathurst/Exhibition directly to the doors.

GO Train—to Exhibition grounds.

Admission—Adults: \$1.50. Students: .75. Children: .25.

At the Royal Winter Fair. November 12-20.

### Chryco Tire Sale

#### SUMMER TIRES

Super 100 Full 4-Ply Nylon

Black Wall from — \$12.60 to \$16.80 each

Whitewalls from — \$14.40 to \$19.15

Depending on size

#### SNOW TIRES

Super 100 Full 4-Ply Nylon

Whitewalls from — \$14.65 to \$20.40 each

INSTALLATION FREE ON EACH PAIR SOLD

For Service Worthwhile See EMERALD ISLE

640-2400 — MAIN STREET — HWY. #47 — STOUFFVILLE

### BARKER ROOFING and SIDING

ALCAN Siding

— REPAIRS — RE-ROOFING OUR SPECIALTY

Free Estimates 640-4966

## BUSINESS DIRECTORY

<b>Licensed Public Accountants</b> WILLIAM ALLEN CHARTERED ACCOUNTANT P.O. Box 884 60 Tindale Rd. Stouffville, Ont. Phone 640-1832	<b>Chiropractors</b> J. S. DeLAURIER D.C. 201 Main Street West Stouffville, Ontario OFFICE HOURS By appointment only Monday to Saturday. TELEPHONE 640-8562	<b>Ontario Land Surveyors</b> D. H. BLACK Ontario Land Surveyor 310 Painted Post Dr. corner of Markham Rd., Scarborough, Ont. PHONE Office 282-5288 Res.: 282-4508
<b>Bregman, Sharpley &amp; Co. CHARTERED ACCOUNTANTS</b> 22 Main St. W. Stouffville, Ontario Resident Partner S. Kusatz, C.A. Tel. 640-1991 964-1370 (Toronto Line)	<b>H. W. BOEHNKE, D.C.</b> Doctor of Chiropractic The Chiropractic Centre 4 Main Street North, Markham For appointment call 294-1400	<b>R. G. McKIBBON</b> Ontario Land Surveyor 264 Wellington W. Markham Phone 294-5764
<b>LEONARD R. ROSENBERG &amp; ASSOCIATES</b> Chartered Accountants 84 Yonge St. S., Aurora Telephone 884-7110	<b>ELECTRICAL</b> Attenborough ELECTRICAL ARCHITECTURE Industrial • Commercial Residential Electrical Service 294-5100	<b>MALCOLM PHILLIPS</b> Ontario Land Surveyor 157 Main St. W., Stouffville PHONE 640-4031
<b>JAMES TURNBULL</b> Chartered Accountant Box 369 R.R.1, Unionville Residence 297-2175	<b>FUNERAL DIRECTORS</b> O'NEILL Funeral Home STOUFFVILLE Funeral Director MRS. FAY MINTON Continuous Telephone Service Day or Night Ph. Stouffville 640-2855	<b>OPTICIANS</b> HOWARD G. MILLS, REG'D. OPTICIAN 288 Main Street West, Stouffville Prescriptions Filled. Appointments Made. Contact Lenses Phone 640-3465
<b>THOMAS E. WITHERS</b> B.Comm., R.I.A. Chartered Accountant P.O. Box 192 42 Palmwood Gate Stouffville, Ont. Phone 640-3378	<b>BUY OFFICE SUPPLIES</b> at <b>THE TRIBUNE</b>	<b>Optometrists</b> F. RICHARD BLACK, O.D. OPTOMETRIST STOUFFVILLE MEDICAL CENTRE For appointment 640-3722 Hours: 10 a.m. - 8 p.m. Every Tuesday
<b>JOHN C. WYLIE, F.I.A.</b> Licensed Public Accountant AUDITOR Office & Residence— "Wylie Acres" Mussel- man's Lake Ed., R.R. 2, Stouffville PHONE 640-3144		<b>Tribune Classified Ads</b> Get Results

## Be Prepared For Winter

John Deere Snow Thrower

John Deere Chain Saws

John Deere Walk-Behind Snow Blowers

nothing runs like a Deere

HUTCHINSON FARM SUPPLY  
 Hwy. 48 — 3 miles north of Ringwood 640-2699

## we wouldn't ask if we didn't have to

Stouffville PUC is a publicly owned utility in business to serve this community with a dependable supply of electricity at the lowest possible cost. We do not operate to earn speculative or large profits. However, the amount we collect in revenue must be sufficient to assure the highest possible service and the financial integrity of the utility.

Any revenue in excess of these requirements goes directly into expanding facilities or keeping your rates down.

Today we face a difficult situation. For the past few years we have been absorbing a large rise in the cost of running your utility. Wages have risen, the cost of the manufactured and raw materials we use has jumped enormously and we're now serving more people than at any other time. Indeed, rising costs have now reached the point where our present rates are no longer sufficient to cover the cost of a year's operation.

Thus, however reluctant we are to do so, we must introduce a new rate. It's a small increase — the smallest possible to allow us to fulfill our obligation to you the customer — 'dependable electric service at the lowest possible cost'.

NEW NET MONTHLY RATES FOR RESIDENTIAL CUSTOMERS		TYPICAL NET CHARGES BASED ON NEW RATES	
Effective on all bills issued on or after Jan. 1, 1972.		Monthly Consumption	Monthly Charge
Kilowatthour (KWH) Consumption	Cost per KWH	250 KWH	\$5.85
	First 50 KWH	685 KWH (average consumption)	\$9.77
Next 200 KWH	2.0c	750 KWH (with electric water heater)	\$10.35
Next 500 KWH (for customers with hydro approved electric water heater)	0.9c	1000 KWH	\$13.23
All additional KWH	1.15c		
Minimum Bill	\$3.00		

### Stouffville Public Utilities Commission

130 MAIN W., STOUFFVILLE — 640-1902