

Editor's Mail

'We can't do it all alone'

Dear Jim: I have heard that the comment in the May 13 issue of The Tribune entitled 'League Could Fold', has aroused a feeling of disappointment with parents in the former Village of Stouffville. We too are disappointed. In the past two weeks Peewee tryouts have been conducted in the Park. Forty-two boys turned out. Of the 42, fourteen or fifteen will be chosen to participate in the O.A.S.A. play-offs in 1971 under coach Jack Watson who, in my opinion is the best in the area. But what happens to the balance?

Our plans to date are to have two Squirt teams - one O.A.S.A. team and one in the Whitchurch League and three Peewee Teams - one O.A.S.A. and two in the Whitchurch League. Also there will be a Bantam and Midget team in O.A.S.A. competition. That's seven minor softball teams, at 4 people per team or 28 adults. We have eleven! In an area of 4,500 there must be seventeen more people interested in these boys. Call me. You can reach my wife at 640-3422. I will be at the Ball Park!

Wilf Morley, Manager, Peewee O.A.S.A. Team

Exhibition lacrosse May 29

STOUFFVILLE Local fans will get their first taste of lacrosse action here, Saturday, May 29 in the Stouffville Arena when Oshawa 'Green Gaels' meet the Brooklin 'Redmen' in an exhibition contest. Game time is 8 p.m.

The 'Green Gaels' are seven time Canadian Junior Champions. Brooklin has swept the Canadian Senior Championship on two occasions.

All proceeds will go towards the organization of the Stouffville 'Shamrock' Juvenile Lacrosse Club.

Admission is \$1 for adults, 75 cents for students and 50 cents for children.

Convenor praised

STOUFFVILLE Edward Grimshaw, Stouffville's first O.M.H.A. convenor, won the plaudits of all members, May 12 at the annual meeting of the Minor Hockey Association.

Treasurer Harry Bowes referred to Mr. Grimshaw's work as 'a job well done'. He said the O.M.H.A. program had improved 100 percent.

Similar praise was voiced by past-president Wilfrid Morley. He recommended that Mr. Grimshaw serve in the same capacity next season.

Sports Day - July 1

Select top athlete

STOUFFVILLE - The Town of Whitchurch-Stouffville will honor its No. 1 sports performer for 1970-71 when it selects its 'Athlete of the Year' next month.

The decision will be announced July 1 at the Sports Day program in the Stouffville Park.

While a committee of leading athletic promoters in the community will make the final choice, Area residents can play a part.

Persons living within the boundary of Whitchurch-Stouffville are asked to submit the names of individuals whom they feel are worthy of such recognition, stating reasons for their choice. The deadline for submissions is June 23. Send them c/o The Tribune, Main Street, Stouffville, marking the envelope 'Athlete of the Year'. The sender's name is not required.

The competition is open to anyone, regardless of sex and age. He or she must, however, reside within the municipality.

Athletic abilities that could be considered might include one or more of the following - track and field, hockey, baseball, softball, tennis, lawn-bowling, alley-bowling, swimming, figure skating, speed skating, wrestling, judo, riding, archery, basketball, volleyball, lacrosse, badminton, football, soccer and diving. Athletes considered as 'professionals' do not qualify.

Girl's hockey to be revived?

STOUFFVILLE - A girl's hockey team for Stouffville next winter? An estimated 30 girls are hopeful ice time can be arranged through affiliation with the Minor Hockey Association. Sue Wilson and Ann Toman attended the annual meeting, May 12, in support of a letter read by the secretary, Keith Sutherland.

In it, Miss Wilson said the team already had a coach, a manager and a sponsor.

"We want to prove to the boys that we can play hockey and also have a lot of fun," she stated, when questioned as to the reason behind the application.

The preferred age classification for the club was set at 13 to 14 years.

Brian Emery, seated in the gallery, said the delegation should be

commended for its courage. "As a town involved with young people of all ages, we should show some interest," he suggested. He recommended the formation of a committee to deal with the request.

It was agreed that the application should be received by the Association and investigated further by the Whitchurch-Stouffville Recreation Committee.

Bowling champions win 14 awards

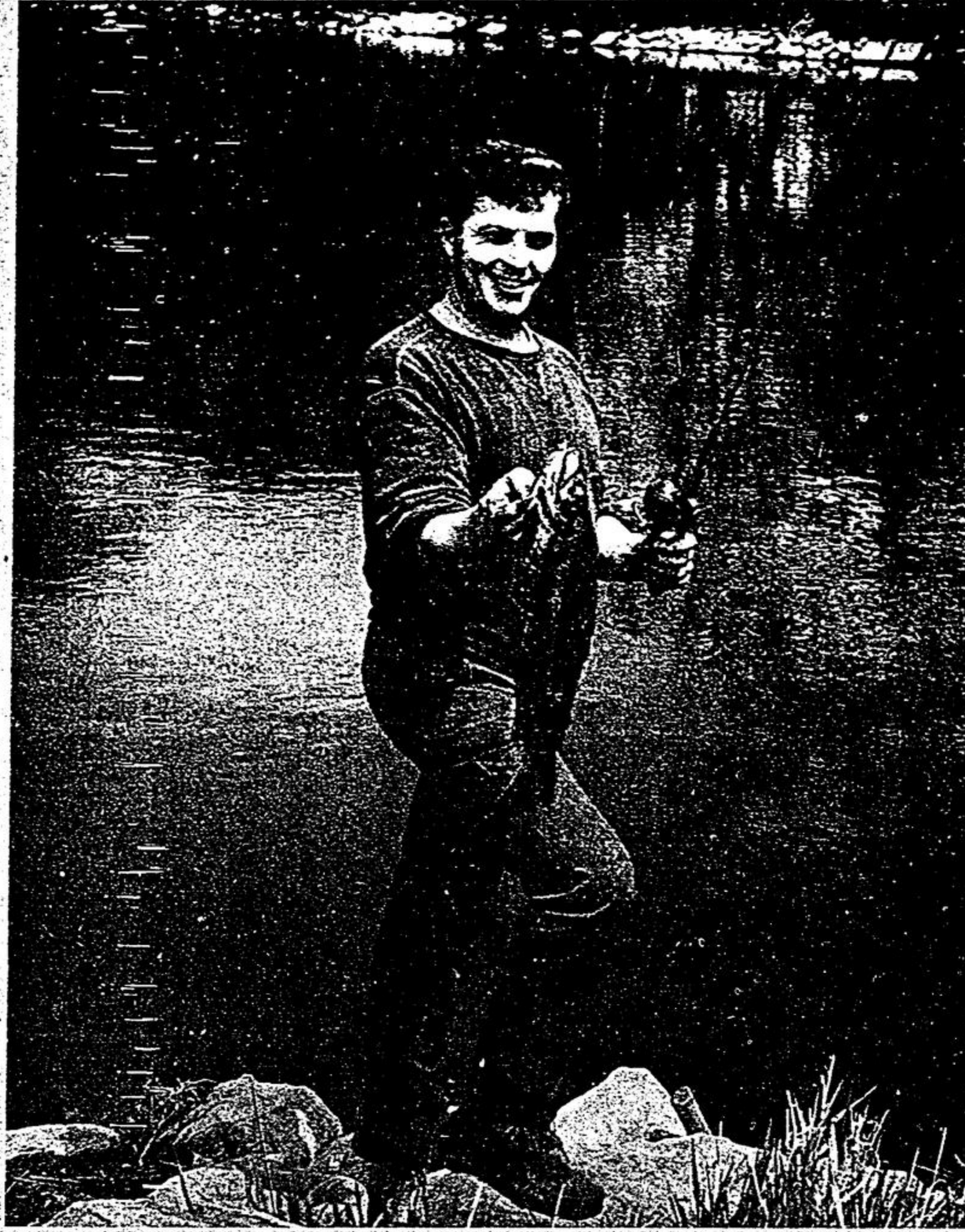
STOUFFVILLE - An enjoyable banquet concluded a successful season for members of the Monday Night Bowling League, May 14, in the Stouffville Legion Hall.

The master of ceremonies was John Illingworth.

The following received awards: Merit Pin, Bill White; Series Winners (7 o'clock), 1st series, Len Greenwood, Roger Todd, Phil Whybrew, Ron Cartwright, Ron Willerton, Bill White; 2nd series, Kevin Dacey, Keith Barton, Barry Irving, Jim Spang, Ron Lush, Dave McNelly. (Nine o'clock), 1st series, John Illingworth, Ken McCaffrey, Keith Burkholder, Ken Hamm, Joe Herold, Ralph Marcelli; 2nd series, Don Dunkeld, Bill Kamps, Lloyd Kerswill, Cliff Dunkeld, Bob Irwin, Bob Tran.

Individual awards went to: Bob Sleeth (high single); Art Grove (high average);

Stouffville Minor Hockey Association Season's budget near \$17,000



Bethesda man lands 4 lb., 9oz. rainbow trout While the location remains a secret, Joe Olszewski, R.R. 4, Stouffville, feels certain he's found the perfect fishing spot. Last week, he landed a 4 lb. 9 oz. rainbow trout 'not too far from home.' The big beauty, measured 23 inches long and 7 1/2 inches deep. —Jas. Thomas.

Hope to 'break even'

STOUFFVILLE - The operation of minor hockey in Stouffville has become 'big business'.

The magnitude of the program was revealed at the annual meeting, May 12, when executive treasurer Harry Bowes listed expenditures for the 1970-71 season at almost \$17,000.

However, in spite of increased costs \$4,000 extra for ice time alone, the program should come very close to paying its way. Mr. Bowes said he anticipated a very slight profit or loss, depending on the amount of outstanding accounts.

The treasurer reported that with receipts from the bike-a-thon and a grant from the Lions Club, the Association could have a \$2,000 'cushion' on which to begin the new season of 1971-72.

President Bud Nichols described it as 'the most successful season ever', with 30 house league teams from Mite through Bantam and 50 O.M.H.A. entries, squirt, peewee, bantam and midget (2).

The greatest expense was for ice rental, totalling \$12,533. New equipment cost \$1,400.

The executive for the coming year follows: President - Bud Nichols; Vice-President, Percy Schell; Secretary, Ed Grimshaw; Treasurer, Harry Bowes; Directors, Eldon Wagg, Murray Redshaw, Clare McGuckin, Jack Geertsma, Keith Sutherland and Gordon Tarr. Included also are Past Presidents, Wilfrid Morley and Bill Barry along with Honorary Life Member, Earl Crowder.

Hardball boys seek recruits

STOUFFVILLE - The call is out for additional player strength to bolster the roster of Stouffville's I.G.A. baseball team.

And, with the schedule to start on the week of May 30, the need is urgent.

Glenn Jackson remains doubtful for mound duty due to a left arm injury suffered last fall. He's still a handy man with the bat however, and will see regular outfield service and possibly some short stints in relief.

Much of the pitching load will fall to south-paw Murray Holden and his back-up man, Geoff Gaston. Roger Todd can also twirl an inning or two if required. Ted Suzuki and Ross Madill will complete the battery.

While more will be known concerning the league following a meeting in Sunderland this week. Manilla, Cambray, Sunderland and Stouffville will likely comprise the group. Little Britain remains a question mark entry.

Stouffville workouts are held every Sunday at 11.30 a.m., and on Wednesdays at seven.

After Juvenile hockey - what?

STOUFFVILLE - While Juvenile and certainly Junior teams do not come under the jurisdiction of the Stouffville Minor Hockey Association, concern was expressed at the annual meeting May 13, concerning the loss of top-grade hometown talent, either unwilling or unable to bridge the gap and catch a spot with the Intermediates.

Stouffville has had no Junior club for several seasons, it was pointed out, so the boys simply leave the area to play elsewhere.

Eldon Wagg, referee-in-chief with the minor organization and an elected director for 1971-72, described as impractical, any program that would include both a Junior and Intermediate team in Stouffville. He said he was certain several Juvenile lads and some Midget-age players had set their sights on a bid for Junior team positions next season.

Association president, Bud Nichols said he understood certain persons in Stouffville were interested in bringing Junior hockey back to the Town, but would make no move as long as the Intermediates were 'alive'.

On a motion by Bob Meakes and supported by Brian Emery, it was agreed that a committee should be formed to promote the idea further.

A tentative date of June 18 has been suggested but not finalized.

The fee, excluding players and management, is \$2.50 per plate.

The courts have been resurfaced and are now floodlit for evening competition.

Peewee tourney

STOUFFVILLE - A Peewee softball tournament, involving eight teams, has been arranged for the Stouffville Park, Saturday, June 12.

Games are to begin at 10 a.m., with the championship contest at 7.30 p.m.

The schedule has Willowdale vs. Richmond Hill at 10: Stouffville vs. Woodbridge at 11; Scarboro vs. East Gwillimbury at 12 noon and Stirling vs. Woodstock at 1.

The tournament will abide by O.A.S.A. rules.

The public is invited. The evening is being sponsored by the Lions Club in co-operation with the Town.

A tentative date of June 18 has been suggested but not finalized.

The fee, excluding players and management, is \$2.50 per plate.

The courts have been resurfaced and are now floodlit for evening competition.

Table tennis tourney

STOUFFVILLE - Councillors Betty vanNostrand and Tom Loneragan will represent the Town of Whitchurch-Stouffville in a table tennis tournament, sponsored by Richmond Hill, June 10.

Other entries include Mayor Tony Roman of Markham; councillors Dave Schiller and Shaun Beggs of Richmond Hill and Mayor Garnet Williams of Vaughan.

All the action will be televised 'live' on Suburban Final.

Honor Peewee team

STOUFFVILLE Stouffville's Peewee Hockey Club, O.M.H.A. finalists, will be honored next month at a banquet in the Legion Hall.

The public is invited. The evening is being sponsored by the Lions Club in co-operation with the Town.

A tentative date of June 18 has been suggested but not finalized.

The fee, excluding players and management, is \$2.50 per plate.

The courts have been resurfaced and are now floodlit for evening competition.

The public is invited. The evening is being sponsored by the Lions Club in co-operation with the Town.

Discuss gun bylaw

MARKHAM - A by-law which would liable anyone caught discharging guns of any description in the Town of Markham to a fine of \$300 was received with skepticism at a meeting of Town Council, April 27.

By a vote of five to three the by-law was deferred for further study.

Midget practice

STOUFFVILLE Positions are still open on Stouffville's O.A.S.A. Midget team, with workouts every Wednesday at 8.30 p.m.

A club meeting is scheduled for the Town Park on Thursday (tonight) at 6.30 p.m. Regular players and first-time prospects are invited.

The coach is Jack Watson, Tenth Line South.



Charter flight to St. Louis Pictured in St. Louis in front of their chartered Air Canada Viscount are (left to right) Bob Shea, Ron Elliot and Tom Shea. The flight was arranged by the Realtor Company to participate in a one-day seminar at the headquarters of the Shea Ltd. affiliate in St. Louis. The aims lectures concentrated on the details of the inter-city relocation system and the new picture brochure service offered to clients. Ron Elliot represented the Stouffville office of the company at the meetings.

THIS WEEK'S SERVICE SPECIAL At Emerald Isle. Minor Tune Up \$9.50 6 cylinder \$13.50 8 cylinder. For A Deal Worthwhile SEE EMERALD ISLE 330 Main St., W., Stouffville. SERVICE DEPARTMENT OPEN 4 A.M. TO 6 P.M. MONDAY, WEDNESDAY & FRIDAY 8 A.M. TO 5 P.M. TUESDAY & THURSDAY. CLOSED SATURDAY. 640-2400 294-5960

STOP HUNTING! Why waste time and money tearing all over town to find your trophies, when the area's largest display is right here at North York Trophies. And we mean large! Always hundreds of items on display - trophies to fit every budget. Trophies for every sport, the winners, the runners-up, best players, best coaches, you name it, North York has it. Naturally, expert engraving is done. Service, and satisfaction are guaranteed. Completely. So stop hunting; phone, or drop in to North York Trophies, this week. You'll be amazed. North York Trophies 5309 YONGE STREET, WILLOWDALE 221-8501 Open daily 9-5:30. Sat. till noon. Other times by appl.

ROXY Phone 294-3355 HELD OVER! DUSTIN HOFFMAN 'LITTLE BIG MAN' SAT. SPECIAL KIDS' MATINEE AT 2:00 P.M. MARTIN AND LEWIS PARTNERS MON., TUES., & WED. ONLY ONE COMPLETE SHOW 7:30 Cable Hogue says... 'Seek... and ye shall find' THE BALLAD OF CABLE HOGUE ZERO MOSTEL KIM NOVAK CLINT WALKER THE GREAT BANK ROBBERY ANKS-TAMROFF