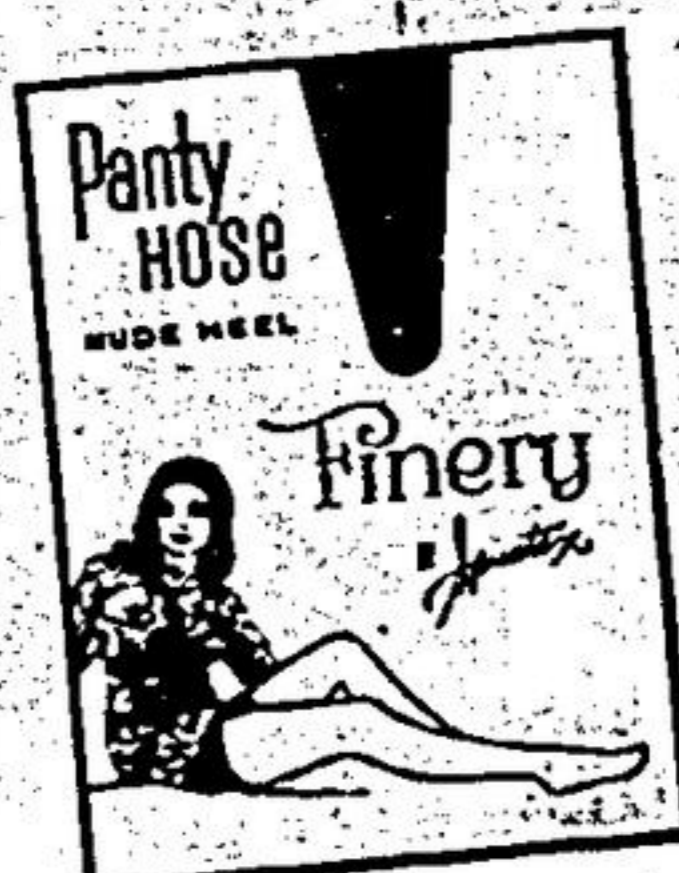


Shop With Confidence

SPECIAL SAVINGS ON HOSIERY



Minisheer, Unisize PANTY HOSE
by Spuntex
One size fits all. Heavy weight panty, reinforced toe & nude heel. Fits 90 to 150 lbs. Beige, Taupe, White.
2/2⁰¹



FINERY PANTY HOSE
by Spuntex
Seamless mesh panty hose. Reinforced toe & nude heel. Beige, Tan, S.M.L. XL.
1³⁰ **BONUS BUY**

Seamless Mesh Stretch
ONE-SIZE STOCKINGS
Fits sizes 8 1/2 to 11. Nude heel. New longer length. Beige, Tan & Espresso.
2/1⁵⁹ **BONUS BUY**

Super Support Seamless
LYCRA PANTI HOSE
Beige, Taupe & White. Reinforced heel & toe. Sheer leg and opaque panty. S.M.L. XL.
4⁹⁹ **BONUS BUY**

Super Sheer Lycra
SUPPORT STOCKINGS
Lycra with Ramsey Knit to make stocking run resistant. Seamless, reinforced heel and toe. Beige, White, Taupe, Petite, Average, Long & Ex. Long.
2/5⁹⁶

Rexall Lycra Spandex Fiber Elastic
SUPPORT STOCKINGS
Seamless, with reinforced heel and toe. Beige, White. S.M.L. XL.
3⁹⁹ **BONUS BUY**

Minisheer, Unisize
PANTY HOSE
Non-Run. Guaranteed non-run construction on leg for longer wear. Fits 90 to 150 lbs. Reinforced toe & nude heel. Beige, Taupe, White.
2/2⁰¹

Minisheer, Unisize
PANTY HOSE
-Maternity by Spuntex
Non-run construction on sheer leg section. Heavier weight panty with patented Flulon panel to provide extra comfort and roominess. Beige.
1⁷⁹ **BONUS BUY**

Rexall Spuntex
SANITARY PANTI
White. S.M.L. XL. Sanitized nylon acetate. Plastic waterproof panels.
2/1⁷⁰

Minisheer, Unisize
PANTY HOSE
All Nude. Fits 90 to 150 lbs. Sheer from top to toe. Beige, Taupe, White.
2/2⁰¹

REXALL SANITARY BELT
Fits all waists 22" to 40"
2/60^c



SUPPORT PANTY HOSE
Strongest support hose yet with support panty for waist to toe comfort. Nude heel & reinforced toe. Beige, White. S.M.L. XL.
3⁹⁹ **BONUS BUY**

STATIONERY SAVINGS



Student
PROJECT KIT
8 1/2 x 11", 100 sheet refill, 3 hole punched, 2 Tung Lok Folders & Labels.
49^c **BONUS BUY**

ASSORTMENT OF STATIONERY ITEMS
2 pc. Ink & Pencil Eraser, 12" Wood Ruler, Bulldog Clips, Rubber Book Strap, Rubber Bands, 100 Paper Clips, Looseleaf Rings, 100 Thumb Tacks, Paper Fasteners, 3 Pencils, 2 Red & Blue Pencils, Finepoint Marker, Watercolor Marker, Permanent Marker, Reinforcements, Eraser Tips, 3 No. 100 Erasers, Spiral Memo Pad, 3 Crayons, Address Labels.
9^c **BONUS BUY**

6 RING MEMO BINDERS
7" x 4 1/2", 6 1/4" x 4 1/4" & 5 1/4" x 3 3/4" assorted colours.
2/1⁰¹



LOW PRICED STATIONERY & GIFTS
SPECIAL 49^c ea.

JUMBO DRY MOUNT ALBUM **BONUS BUY**
20 pages in each album. Assorted colours.
2⁹⁹

LEGAL SIZE BRIEFCASE
11" x 16", zipper opening, heavy vinyl, 3 colours.
1⁹⁹ **BONUS BUY**

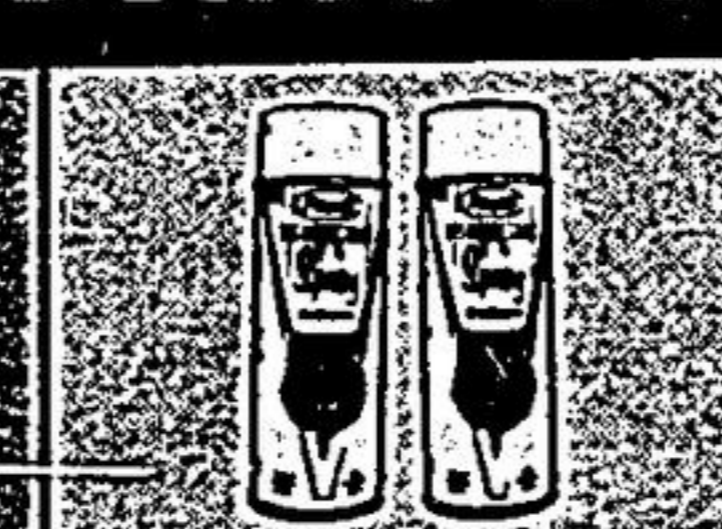
TELEPHONE REST • WATER PAINT SET • MAGNIFIER • 20 PC. ARTIST BRUSH ASST. • STORM BAG • MOISTENER • PAPER CUTTER • POCKET FLASHLIGHT • MAGNETIC MEMO HOLDERS • ADDRESS BOOK **BONUS BUY**

66^c SPECIALS ON STATIONERY ITEMS
• BINGO CHIPS, 250 • 100 PLASTIC PUSH PINS • 20 ARTIST BRUSHES • MAGNIFYING GLASS • CREDIT CARD CASE • PHOTO ALBUM • ADDRESS BOOK • PHOTO ALBUM • 6 WATER COLOR MARKERS • AUTOGRAPH ALBUM

BIG BONUS BUYS ON HOUSEHOLD AIDS



All Purpose
HOUSEHOLD CLEANER
32 fl. oz.
2/1⁵⁸



DISINFECTANT SPRAY (30 day)
7 oz. aerosol
2/1⁴⁶



FLOOR WAX
Extra Hard Finish
1 lb. tin
61^c



Instant
FURNITURE WAX
7 oz.
2/1²⁶



Miracle
GLASS CLEANER
With TX100 & Silicones
19 oz. AVDP
2/1³⁹



SILQUE LOTION FOR DISHES
(Biodegradable)
32 fl. oz.
2/1⁵⁸



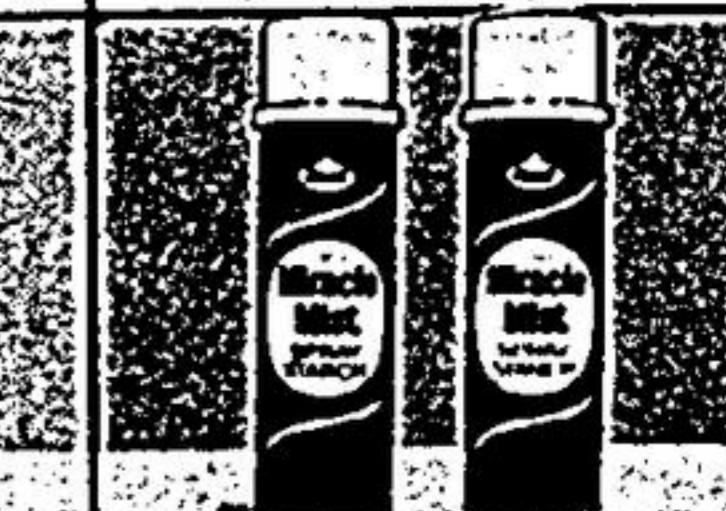
MIRACLE MIST SPRAY STARCH
14 oz.
2/93^c



SELF-POLISHING CLEAR FLOOR WAX
(Liquid Heavy Duty Type)
32 fl. oz.
93^c



SOFT'N FABRIC SOFTENER
(Biodegradable)
32 fl. oz.
2/1³⁰



MIRACLE MIST SPRAY STARCH
20 oz.
2/1³³

SPECIAL BUYS FOR GIFT OCCASIONS



GIFT WRAP PACKAGE
10 sheets gift wrap
14 sheets tissue
10 star bows
1⁴⁹ **BONUS BUY**

DELUXE GIFT WRAP
PAPER FOR ALL OCCASIONS
2 SHEETS PER FOLD
2/36^c

MADRAS TISSUE
26" x 150", assorted colours
2/1⁰¹



TISSUE PAPER IN FOLDS
16 sheets white & 14 assorted colours
fold
39^c

Deluxe All Occasion
GIFT WRAP
26" x 72"
2/1⁰¹

CASCADE BOW & MATCHING RIBBON
Assorted colours
2/40^c

12 BOW PAK
Assorted colours
2/1⁰¹

ALL OCCASION CARDS BOXED
2/1⁵¹