

CEDAR BEACH

North Shore
Musselman's Lake



HOLIDAY DANCING

SATURDAY NITE & SUNDAY MIDNITE
VAN WALKER & HIS ORCHESTRA
Featuring the Voice of Walter Scott

Deer Seasons Are Revealed

While the mouth doesn't water for venison these days except when one contemplates the price of beef, there are many signs that the time will come again when this meat will help to supplement many diets.

The Dept. of Lands and Forests at Lindsay has revealed the dates on which hunters in the district may take to the woods in pursuit

of this game. Here they are:

Deer
November 5th to November 17th, in the District of Haliburton, that portion of Peterborough County, north of No. 7 Highway, and the Townships of Bexley, Carden, Dalton, Digby, Laxton, Longford and Somerville in the County of Victoria.

November 12th to November 17th in the Counties of Durham, Northumberland and that portion of Peterborough County south of No. 7 Highway.

Note: There is no open season for Deer in the townships of

Eldon, Emily, Fenelon, Mariposa, Ops or Verulam, in the County of Victoria.

A 1951 Deer Hunting License will be the authority of the holder thereof to hunt and kill one deer of any age or sex, or one elk, subject to conditions and regulations under the Ontario Game and Fisheries Act.

Moose
An open season on Moose, for residents of Ontario only, has been declared from November 15th, to December 15th, in that portion of Ontario north of the northernmost east-west line of the Canadian

Pension Forms Being Distributed This Week

The government has started to pave the way for pensions to all Canadians over 70 years of age. Health Minister Paul Martin says that special forms are being made available in post offices across the country starting this week. The forms can be filled out by persons over 70 who aren't now receiving pensions.

The 40-dollars a month pension will be paid starting the first of next year, and the early registration has been ordered to facilitate clearance of all applicants before then. The forms don't have to be filled out by the 300-thousand persons already receiving pensions. The new forms apply only to some 400-thousand men and women who were not previously eligible for the benefits.

The new pensions are being paid to everyone over 70 without a means test.

Martin stresses that the completed forms have to be accompanied with proof of the applicant's age. The best proof, he says, is either birth or baptismal certificate.

Before the age of careless drivers it was gossips who ran down people.

National Railway, from the Quebec Boundary to the Manitoba Boundary. There is no open season for Moose in the remainder of Ontario.

Watts Electric & Plumbing

ELECTRICAL CONTRACTING
PLUMBING and HEATING

Pumps Softeners Oil Burners
THOR WASHERS ROGERS MAJESTIC RADIOS
Television Frigidaire Appliances

TWO STORES TO SERVE YOU

Markham 177w - Agincourt 320w - GR 6993
A. H. WATTS, Prop.

Could Use Resuscitator At The Lake

A number of cottagers have pointed out that a resuscitator would be a very fine piece of equipment to have at the lakeside in case of emergency. While Musselman's Lake has been very fortunate in having few drownings over a long period of years, an emergency can arise at any time. In such cases life-saving equipment should be made available within a few minutes, and many cottagers believe that some move should be made on the part of the various associations functioning at the lake, to join possibly with municipal authorities in providing such equipment.

The cost of a resuscitator we understand, is in the neighborhood of \$600.

Try 'em for Size!



It's a long way to the bottom of one of our cool, delicious sundaes . . . and there's rich, creamy flavor all the way down! Treat yourself today!

Stop in for a snack!
Bigger Servings . . . Better flavor!

"A Good Place To Eat"

HAROLD'S GRILL

Phone 349 Stouffville

Toronto-Barrie 4-Lane Highway Stalled by Steel

The Toronto-Barrie fourlane highway, started in the spring of 1946, is still about a year away from completion.

Ontario Highways Minister Doucett last week said steel is the present problem. Nine overpass structures are in the course of construction—they range between 16 and 94 per cent completed—and each takes roughly 80 tons of steel.

Contracts have been let for the paving of 9.3 of the highway's total 46 miles. The paving is being done north from Wilson Ave.

A first 10 miles on the Windsor-Toronto highway has been started just outside Windsor. The exact route this four-lane highway is to take along its full length has not been determined yet, however. It will pass somewhere between St. Thomas and London; there is also some doubt what line it will follow through the Kitchener, Waterloo, Preston area.

This highway, expected to become the main trans-provincial highway will cost about \$8,000,000, or something over \$300,000 a mile. Clover-leaves will take traffic into and out of all major cities along the route.

Negotiations have to be undertaken with the City of Windsor to decide how it will enter there. Until it is hooked up at both ends, the 10-mile stretch now started will not be used.

Grading and structures for the first, centre-section of the Toronto by-pass highway, are expected to be almost completed this year. This highway will swing through traffic north of the city from the major four-lane highways running east and west.

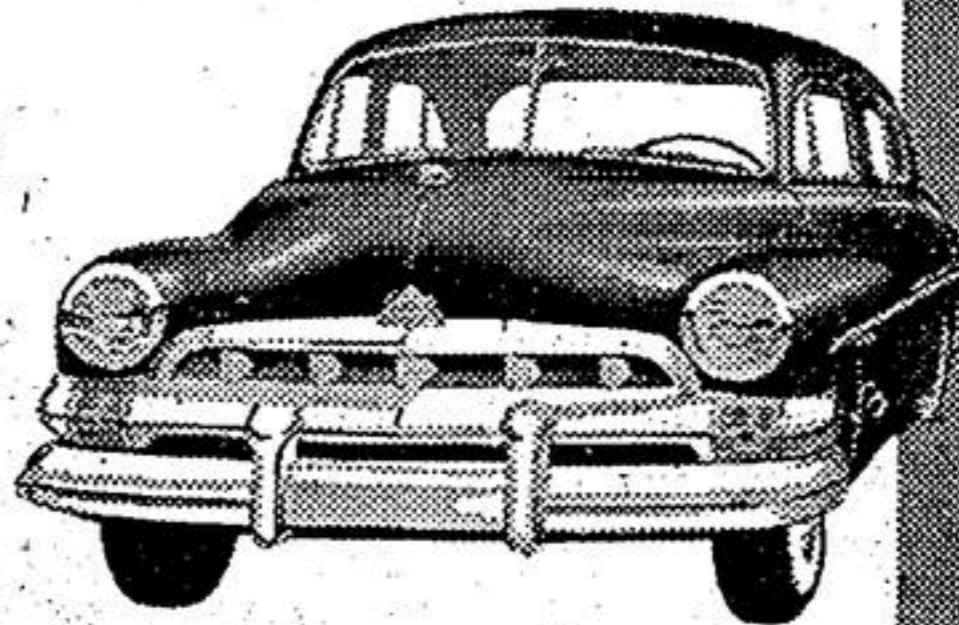
Oshawa will still be the eastern terminal of the four-lane pavement of Highway 2A this year. Grading, east from Oshawa, and west from Bowmanville, will be completed by the end of summer, but then must come the paving. Grading soon is to start east from Bowmanville.

NOW AVAILABLE IN CANADA

AUTOMATIC TRANSMISSION

Owner-proved by tens of thousands
now yours for effortless driving in

FORD and Monarch cars

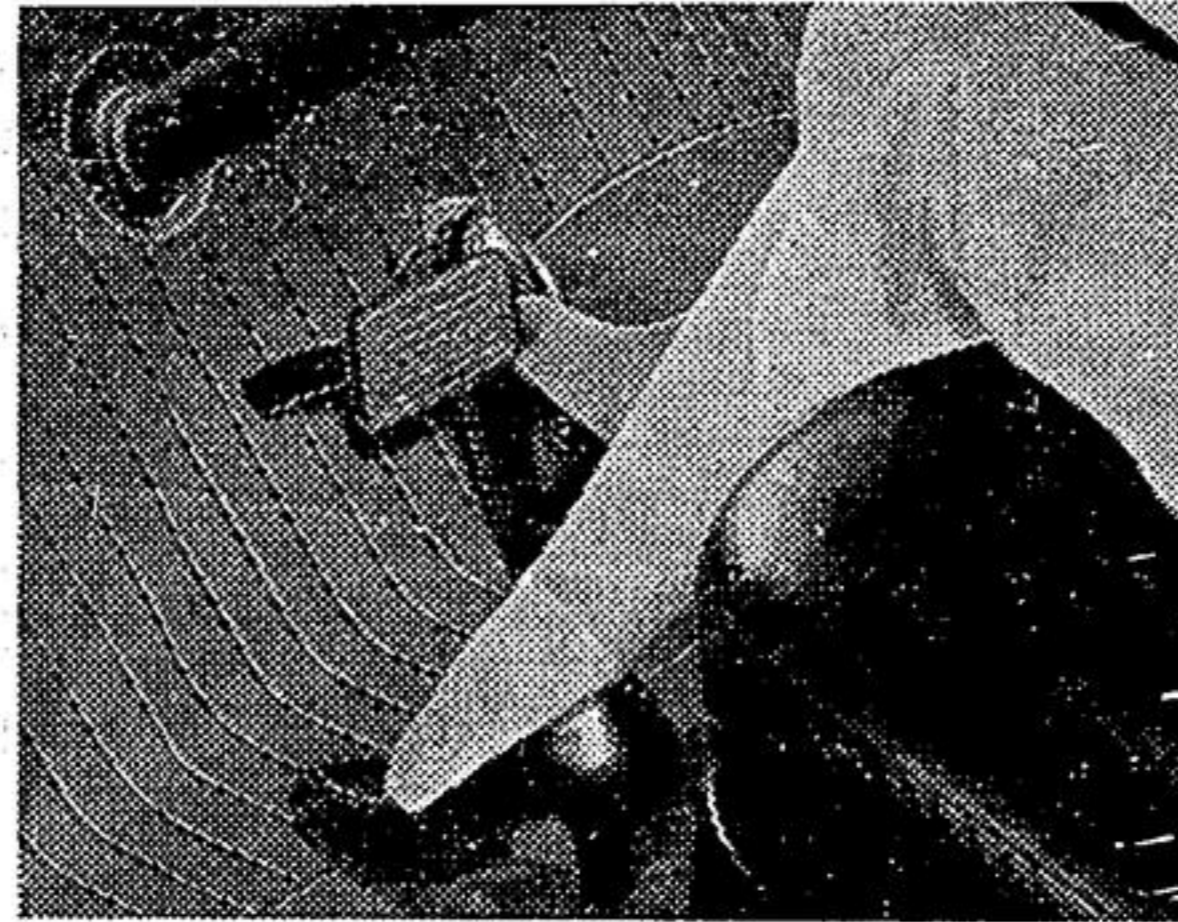


Here it is!—the newest, most advanced Automatic Transmission of all—now offered as optional equipment* on all new Ford and Monarch cars. Road-proved and owner-proved by tens of thousands of satisfied drivers who are now enjoying the extra smoothness, the magically effortless driving pleasure made possible by this latest, finest Automatic Transmission.

The clutch pedal and gear shifting are completely eliminated! This newest Automatic Transmission combines the smoothness of oil-cushioned drive with the flexibility and control of automatic operation unmatched by any other type of Automatic Transmission.

Until you enjoy a Test-Drive in a Ford or Monarch with Automatic Transmission, you'll never know the extra acceleration—the extra "passing power"—the extra-safe engine braking downhill—that only this newest and finest Automatic Transmission can give. See your Ford-Monarch Dealer for a demonstration . . . and enjoy the driving surprise of your life.

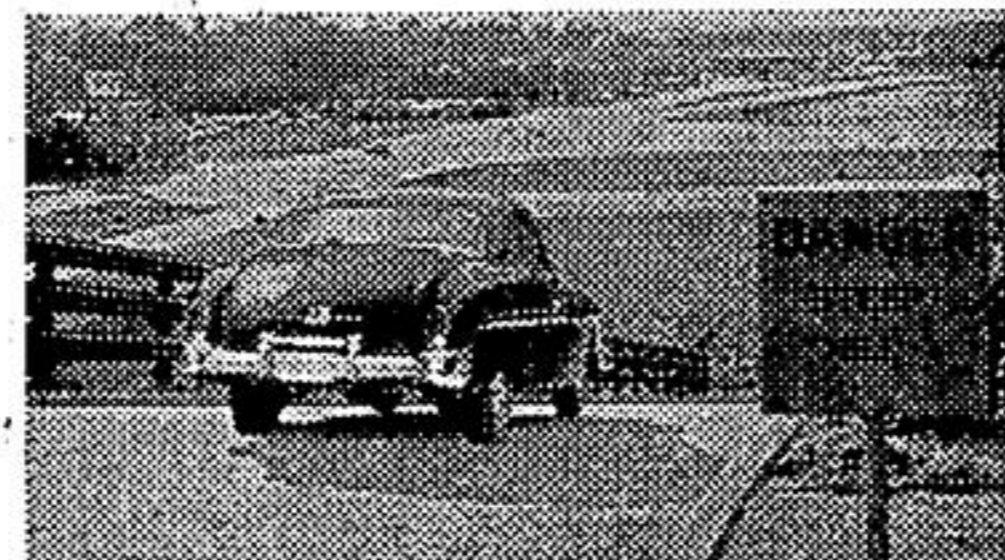
*Automatic Transmission optional at extra cost. Fords and Monarchs are also available with Standard Transmission or with Overdrive.



NO CLUTCH PEDAL . . . NO GEARS TO SHIFT—Just set the Drive Selector, which is mounted on the steering wheel, then forget about clutching, forget about shifting . . . with Ford and Monarch Automatic Transmission! It's more automatic than most other drives; yet you have complete control with far greater flexibility. And it can't be touched by most systems for its efficiency of operation.



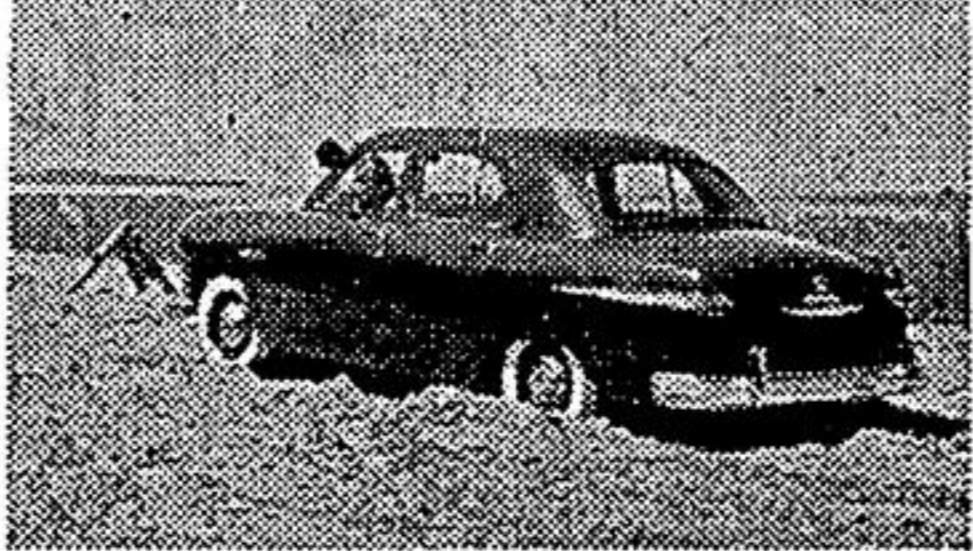
Instant Acceleration—You can drive all day and never move the Selector from Drive (DR) position. For quick pick-up in passing or climbing steep hills, you simply press down on the accelerator and the closed throttle "downshift" takes you out of high into intermediate automatically, requiring no effort on the part of the driver.



Permits use of engine for braking safety—You're safer on hills or slippery roads with the new Ford and Monarch Automatic Shifting because the engine actually helps to slow the car down. You can flip the Selector to Low (LO) at any speed with complete safety when extra engine braking is needed.



Fishing Gateway—Leave it to Ford and Monarch to perfect "no-lag" pickup in Automatic Shifting! The outstanding combination of a remarkable torque converter PLUS a fully automatic gear transmission bring you smooth, surging starts with no need for racing your engine!



Easier "rocking" In snow or mud—Stuck in the mud? Simply move the Selector to Low (LO) for extra traction. Want to "rock" your car out of snow or a rut? Just move the Selector back and forth from Reverse to Drive. And you'll find if you ever need a push to start, the engine starts at safe, low speeds with this Automatic Transmission.

SEE YOUR FORD-Monarch DEALER NOW!

EASTSIDE MOTORS

FORD CARS - MONARCH CARS - FORD TRUCKS

FORD TRACTORS & DEARBORN IMPLEMENTS

Ford's English Built Products:

Anglia & Prefect Cars - Thames Trucks - Fordson Major Tractors & Implements

B.A 88 & 98 GASOLINE, OIL, GREASES, & OTHER LUBRICANTS



Corner Main & Tenth

Phone 64w1 Stouffville