

GALLO
REAL ESTATE LTD.
BROKERAGE

197

We work for you.

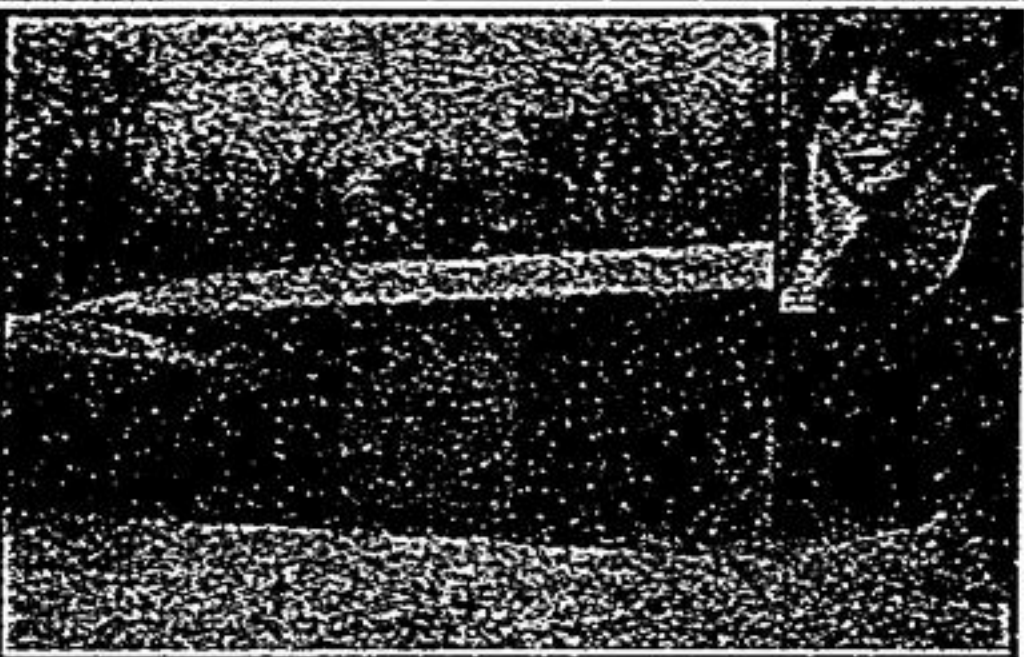
905-640-1200

www.gallorealestateltd.com



HOUSE • WORKSHOP • OFFICE

Rare opportunity! Work + live at home! Fabulous home plus workshop + office. Approx 3/4 acre! Access to 404! Dead end court! Call re: multi-uses + zoning! Kim Reesor*, 905-640-1200.



WALK TO GO TRAIN
ESTABLISHED NEIGHBOURHOOD! \$439,900
Sought after street! Fabulous garage with loft! Spacious rooms! Hardwood floors! 3 bedrooms, 2 baths! Finished basement! Separate entrance! Updated windows! Prof landscaping!
Kim Reesor*, 905-640-1200.



WALK TO GO TRAIN
ESTABLISHED NEIGHBOURHOOD!
Charm & Character thruout! Wood trim! Pine floors! 2 baths! 3 Bedrooms! 3 Porches! Treed yard. \$399,900.
Kim Reesor*, 905-640-1200.



SURROUNDED BY GOLF COURSE
RENOVATED CHURCH! NOW \$469,900
One of a kind! Approx 3500 sq ft! Finished bsmt! 4 Bedrooms, 3 baths! Pine floors! Work & live at home! Immediate possession available!
Kim Reesor*, 905-640-1200.



RANCH BUNGALOW
A PARK FOR YOUR CHILDREN "SPLASH POOL"
Updated thru-out! Unique floor plan! 3+1 BR's, 3 baths! 3 gas FP's. Fabulous rec rm/w/o bsmt! Oversized heated garage! Spotless!
\$539,900. Kim Reesor* 905-640-1200.



6.7 ACRES \$799,900
COUNTRY LIVING! CITY CONVENIENCE!
Custom home! Wrap around porches! W/o bsmt! 4 Bedrooms! 2 ensuite! Thousands spent! Neighbourhood of Estate Homes!
Kim Reesor*, 905-640-1200.



STUNNING! \$529,900
OPEN HOUSE SUN 1-3*81 LITTLE ROUGE CIRCLE
Fabulous floor plan! Approx 2600 sq ft! Open concept! 9' ceilings! 2nd floor laundry plus 4 bedrooms & den! Quiet cul-de-sac! West end of town! Walk to shops, schools, parks. Poss' avail. Kim Reesor*, 905-640-1200.



WORKSHOP APP. 1 ACRE
SLEEPY HOLLOW ESTATES
Stunning home! Finished top to bottom! Hickory floors! Potlights! Oak kit/granite! Updated baths! Wet bar, 2 gas FP's! 3 car garage! Private treed lot! Close to town "Sleepy Hollow".
\$829,900. Kim Reesor*, 905-640-1200.



4 PLEX! \$569,900
Situated on Church! Grand century home! Exquisite baseboards + trim. Maple floors! 10' ceilings! Full bsmt! Gingerbread trim! 2 porches! Kim Reesor*, 905-640-1200.



LISTED & SOLD!
3 bdrm century home on 1/2 acre lot. Wrap-around porch, country kitchen, fireplace & all appliances! For similar results call Joseph A. Gallo*, 905-640-1200.



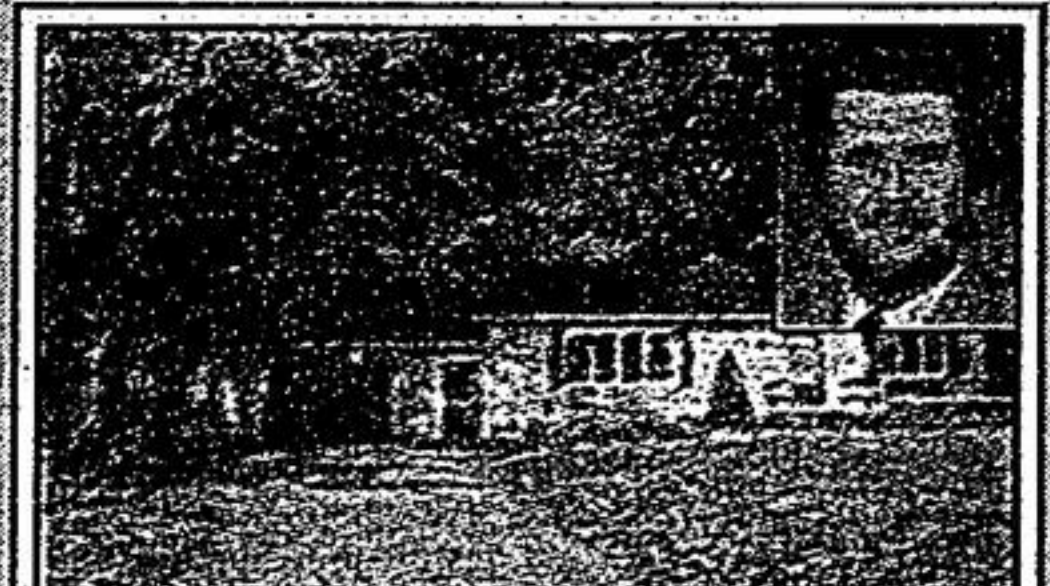
457 FEET OF HWY FRONTAGE!
Custom bilt 3 bdrm bungalow w/updated kit! Heated & insulated workshop, 2 separate driveways! Prime location! \$429,000. Call Joseph Gallo*, 905-640-1200.



IN THE HEART OF VIVIAN FOREST!
Custom built bungalow on 5 acres! Hardwood forest, finished bsmt, workshop + 2 large outbuildings + more! Call Joseph Gallo*, 905-640-1200.



JUST LISTED!
3 bedroom townhome. Bright modern kitchen, ceramics, laminate flrs. 4 baths, separate garage! Close to Yonge & 16th Ave. Call Joseph Gallo*, 905-640-1200.



273 REACH RD., UXBRIDGE
This totally rebuilt home would look good in your stocking! 3 bedrooms, stunning rec room, near 1/2 acre. Edge of town, close to shopping! Mike Marsden* 905-640-1200.



OPEN HOUSE SUN 2-4
FANTASTIC PRICE REDUCTION
293 Pasadena Dr. Country cottage, town services, cathedral ceiling, wrap around deck. Perfect 1st timers or retirees. Owner wants it sold! \$179,900. Mike Marsden* 905-640-1200.



NATURAL STONE BUNGALOW
Stunning finishes in this high quality custom bilt 4 br bung. 8' trim, 90° solid oak drs, cornice mldgs, hwdw flrs, granite flrs, leaded wdws, maple kit w view of forest! 1.25 ac in Maples of Ballantrae. Call for more info. \$1,095,000. Ross or Adele Gallo*, 905-640-1200.



NEAT & SWEET!
This lovely 3' bdrm home in Cornell is mins walk to Hospital! Large LR w gas FP, spacious eat-in kit open to fam rm, hrdwd flrs on 1st & 2nd flrs, California shutters, lrg south facing lot! Call Adele Gallo*, 905-640-1200.



NEW PRICE!
This immaculate + renovated century home has 25% home occupation-live + work, 2 front entrances from large front porch! Family rm w/o to deck! Main St exposure! Now \$459,800. Call Adele Gallo*, 905-640-1200.



\$895,000
INVESTMENT PROPERTY
25 acres with Colorado spruce & 2959 ft frontage on paved road. Just like new 3 bedroom home, 2975 sq ft, shop, 2300 sq ft quonset hut. Located 6 miles east of Claremont. Ross Gallo*, 905-640-1200.

Outstanding Service... Does Not Cost More

STOP & Pick up!

York Region Showcase of Homes, the most **complete region-wide** Real Estate and New Homes Publication

The **Showcase BOXES** are conveniently located at

- Realtors offices
- GO Stations and

other prime locations throughout York Region.

The Showcase Package contains,

*Today's Homes, Richmond Hill, Thornhill, Vaughan, Markham, Stouffville, Newmarket, Aurora, King City, East Gwillimbury, Bradford, Sutton, Keswick and Lake Simcoe publications.

(one package complete coverage)

Brought to you by the



www.yorkregion.com



COMPLETE REGION-WIDE REAL ESTATE