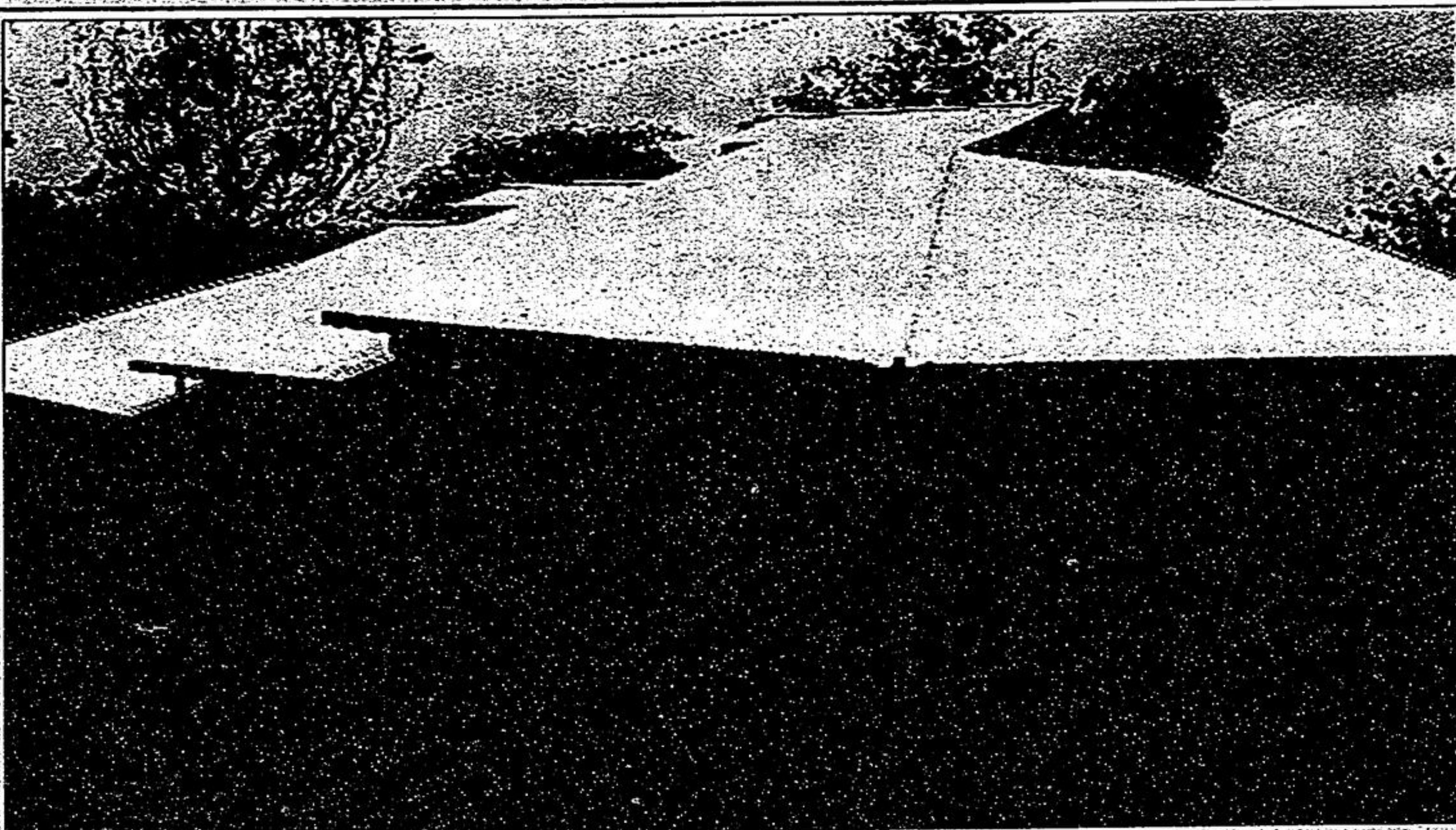


The mother and child care unit at the Urafiki Health Centre, Igoma's first medical clinic, was built thanks to the Stouffville Igoma Project. The group holds a fundraiser next week in Stouffville.



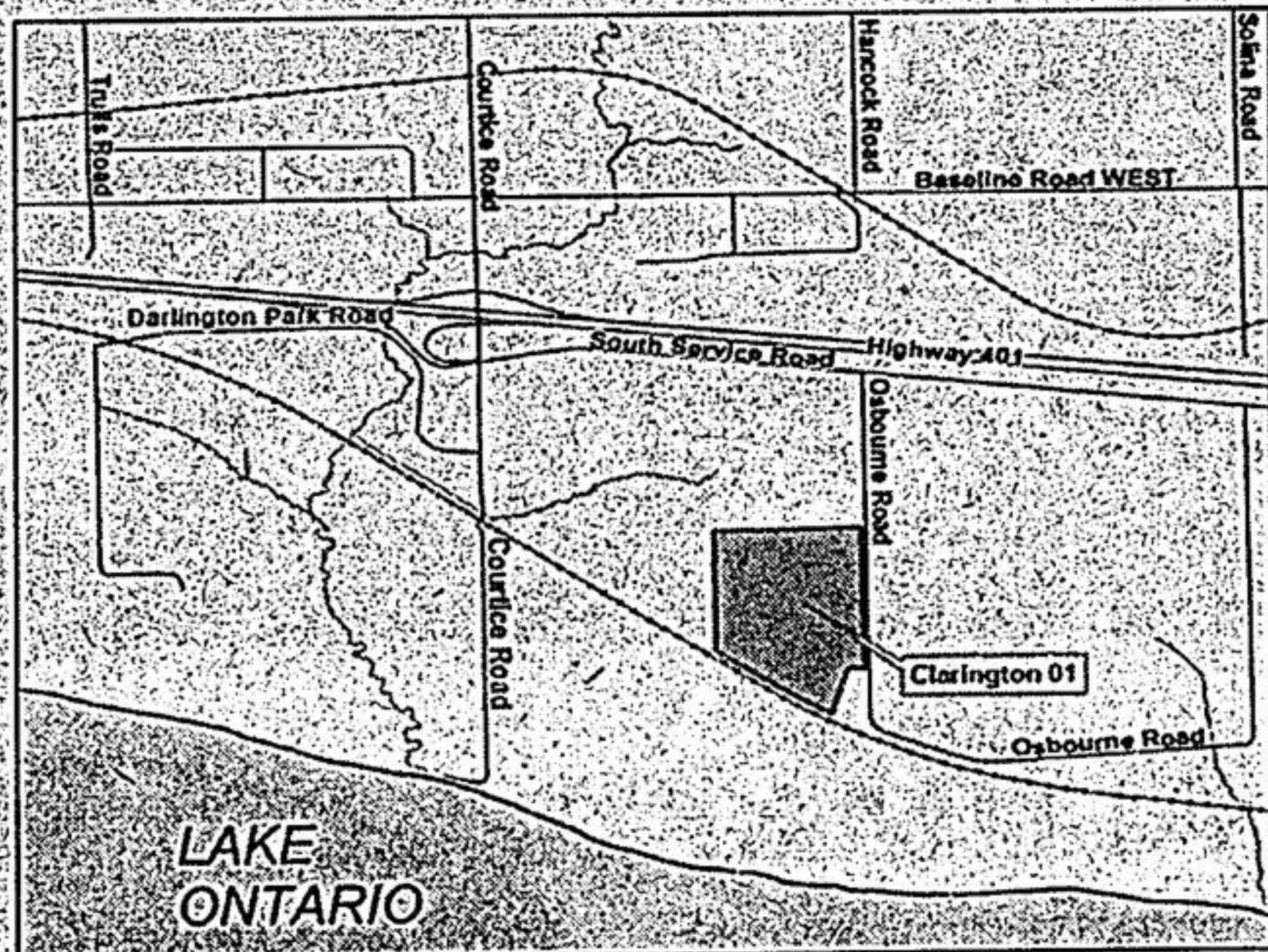
## Durham/York Residual Waste Environmental Assessment Study Public Information Session

### PUBLIC NOTICE

#### Consultants' Recommended Preferred Facility Site has been Identified

Durham and York Regions seek your input on the recommended preferred site for a new thermal treatment facility proposed to manage the garbage that remains after recycling and composting.

Durham and York Regions are participating in a joint study to find a better way to manage the residual waste (i.e. garbage) remaining after recycling and composting. Through the Joint Waste Management Group, the two Regions are addressing the social, environmental and financial impacts of this issue by way of an "Individual" Environmental Assessment (EA) under the Provincial EA Act. The site identification and evaluation process to identify a preferred site for the proposed facility is now complete. On September 25<sup>th</sup>, 2007, a preferred site was identified and released for public and agency review and comment. The site is located in the Municipality of Clarington, south of Highway 401, west of Osbourne Road and north of a CN Rail corridor, as illustrated in the map below. The recommended preferred site was arrived at following the evaluation methodology and criteria in the approved EA Terms of Reference which was developed with extensive public consultation and input.



A Public Information Session will be held in York Region on October 23<sup>rd</sup>, 2007, to present and discuss information and receive public input on the recommended preferred site. The evaluation process and the rationale behind the preferred site identification will be presented. A complete set of supporting documentation can be found on the Study website at: [www.durhamyorkwaste.ca](http://www.durhamyorkwaste.ca)

A Drop-in Information Session will be held from 4:00 p.m. to 7:00 p.m.  
A formal presentation will begin at 7:00 p.m. followed by a question-and-answer period.

Tuesday, October 23<sup>rd</sup>, 2007  
Roman Palace Banquet Hall,  
1096 Ringwell Drive,  
Newmarket, Ontario

You may register in advance of these sessions by calling 1-866-398-4423.

For more information on the Durham/York Residual Waste EA Study, please visit: [www.durhamyorkwaste.ca](http://www.durhamyorkwaste.ca) or call 1-866-398-4423.



# Twins, triplets get good start thanks to partnership

BY HANNELORE VOLPE  
Staff Writer

Many residents in Igoma, Tanzania, are healthier and babies have a better chance of a healthy life thanks to the Stouffville Igoma Partnership.

The group has raised funds and provided volunteers for several years to help build the Urafiki Health Centre, Igoma's first medical clinic.

The clinic is now open full time and is operated by a staff of 20, including full-time doctors and nurses.

To continue its work, the partnership is holding its third annual fundraising dinner and auction Oct. 19 at East-Ridge Evangelical Missionary Church.

The most recent addition to the facility is the mother and child care clinic.

So far this year, three sets of twins and a set of triplets were born and cared for at the clinic.

"We are quite proud of them, as multiple births are not always successful," partnership chairperson Peter Neufeld said.

A group of volunteers from Whitchurch-Stouffville and surrounding area travelled to Igoma this summer to work on the mother and child care clinic, which was built with the help of about 20 Igoma residents.

Another project of the partnership is buying and

putting up mosquito nets in the homes of Igoma residents.

Students at the Progressive Montessori Academy in Stouffville held a fundraiser, spearheaded by Olivia Wignall and Aline Murad, to buy 90 mosquito nets.

They got their class involved and held a bake sale at their school, raising \$390.

*The group has raised funds and provided volunteers for several years to help build the Urafiki Health Centre, Igoma's first medical clinic.*

The partnership also supports around 10 Igomans so they can complete training at a nearby vocational school and provides funds for five students to attend high school.

The dinner and auction begins at 5:30 p.m. at East-Ridge, 12485 Tenth Line in Stouffville.

Tickets are \$50 per person.

For tickets, call the Whitchurch-Stouffville Chamber of Commerce at 905-642-4227 or the church at 905-640-3911, ext. 42. Visit [sipartnership.org](http://sipartnership.org) for more information.

"Leave anonymous tips by phone or online"  
"Cash rewards for anonymous tips that lead to an arrest!"  
**1-800-222-TIPS or www.crimestoppersyr.ca**

This message brought to you as a community service of The Economist/Sun-Tribune

**Annual Premium \$421** Plus Tax

**SAMPLE QUOTE:**

Building	\$300,000	Includes: • Comprehensive coverage • \$1000 deductible • Replacement cost on contents and building • Sewer backup • Identify theft
Contents	\$300,000	
Detached Structure	\$45,000	
Additional Living Expenses	\$60,000	
Liability	\$2,000,000	
Voluntary Medical Payments	\$2,000	
Voluntary Property Damage	\$500	

Above quote includes 25% discount (10% for new home, 10% of claims free, and 5% multi-product discount) tax not included. Rates may change without notice and are subject to completion of satisfactory applications.

**the co-operators**  
A Better Plan For You

CAC Home, Auto, Life, Investments, Group, Business, Farm, Travel

**STOUFFVILLE**  
Larry Irwin  
6358 Main St.  
905-640-2586