

SUDOKU



The Rubik's Cube of the 21st Century

yorkregion.com
it clicks home

SAMPLE QUOTE:

Building.....	\$300,000	Includes:
Contents.....	\$300,000	• Comprehensive coverage
Detached Structure.....	\$45,000	• \$1000 deductible
Additional Living Expenses.....	\$60,000	• Replacement cost on contents and building
Liability.....	\$2,000,000	• Sewer backup
Voluntary Medical Payments.....	\$2,000	• Identity theft
Voluntary Property Damage.....	\$500	

Annual Premium **\$421** Plus tax

Above quote includes 25% discount (10% for new home, 10% of claims-free, and 5% multi-product discount), tax not included. Rates may change without notice and are subject to completion of satisfactory applications.

the co-operators
A Better Place For You

Home • Auto • Life • Investments • Group • Business • Farm • Travel

STOUFFVILLE
Larry Irwin
6358 Main St.
905-640-2586

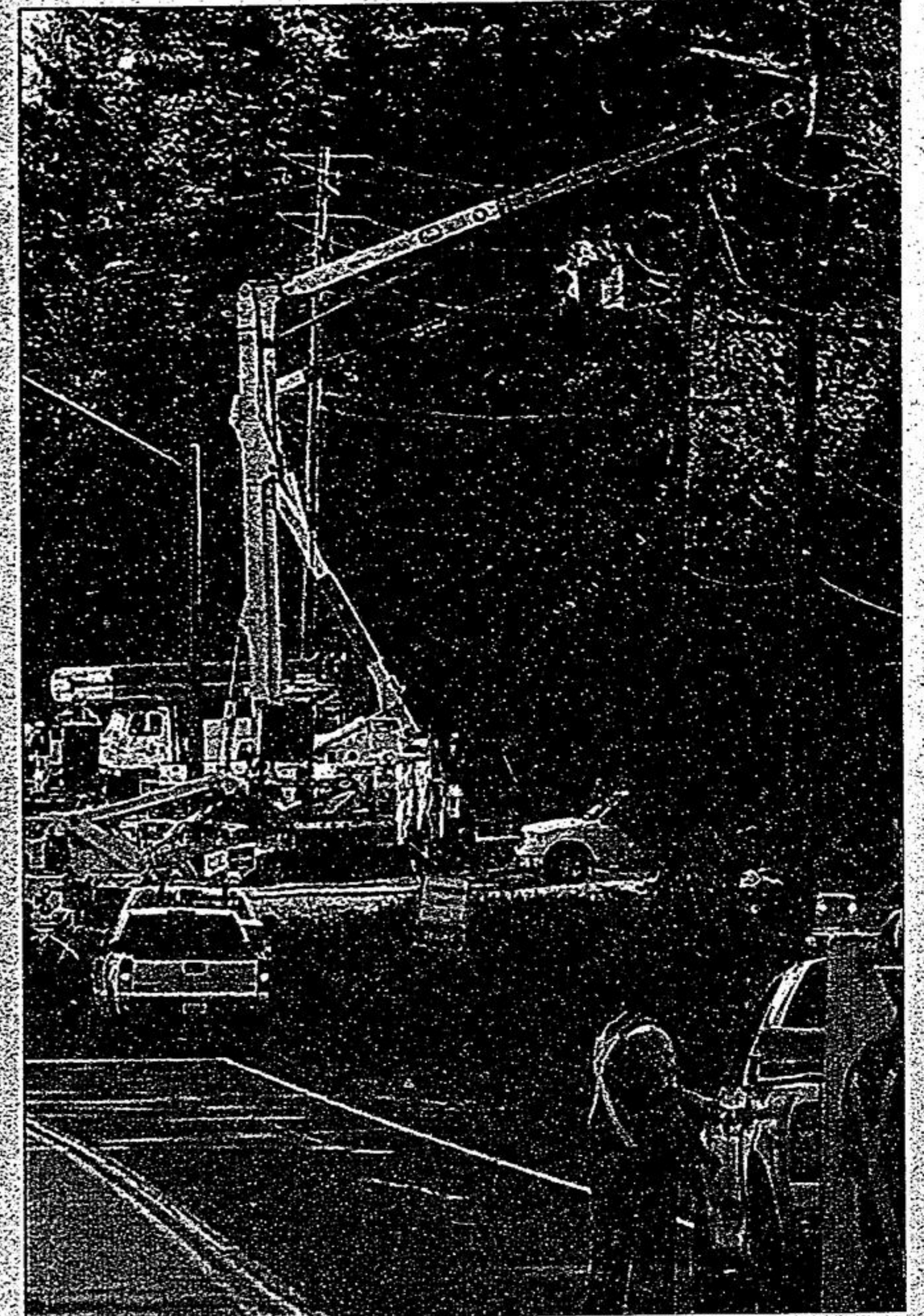


PHOTO COURTESY HYDRO ONE

Some of the 100 Hydro One staffers upgrading service to an area north of Stouffville Saturday work along Vivian Road.

All it takes is a smile to show you care.



\$1.00
plus tax

The Smile Cookies are back, and they're happier than ever. This week, buy a special chocolate chip Smile Cookie for just \$1.00 each, and we'll donate entire proceeds to Markham Stouffville Hospital Foundation.

 **Tim Hortons.**
Together With You, Making Good Things Happen.

Hydro hopes for fewer outages after upgrades

BY HANNELORE VOLPE
Staff Writer

It took 100 men, a lot of trucks and one day to complete \$175,000 in hydro improvements in Whitchurch-Stouffville and Uxbridge Saturday.

Hydro One's aim was to improve the reliability of hydro supply in these areas.

Whitchurch-Stouffville has traditionally been plagued by more power outages than comparable areas.

Over the past seven years, Hydro One has invested \$10 million in improvements to the system, resulting in fewer power outages.

Staff worked at heights up to 75 feet to replace insulators on a pole line along Vivian Road, carrying two high voltage 44,000-volt circuits and a 4,800-volt circuit.

About 3,700 customers were without power from 6 a.m. to early afternoon.

"In the past, this line has experienced several outages resulting from problems with insulators," Hydro One spokesperson Al Manchee said, "so this work should increase reliability substantially in the area."

Power supply to many customers had to be re-routed so they could maintain

power while the work was being done.

The 44,000-volt circuits start at the Armitage Transformer Station in Newmarket and feed the Stouffville-Uxbridge area. They had to be taken out of service so staff could do their work, but power couldn't be re-routed to all customers.

All affected customers were notified in advance. The power interruption covered five concessions (about 15 km of line) from Woodbine Road to Durham Road 30 on Vivian Road.

Staff from Newmarket, Bowmanville, Peterborough, Fenelon Falls, Minden, Alliston and Orangeville were involved in the job.

They changed about 1,190 insulators on more than 200 poles using about 30 bucket trucks, with booms as high as 75 feet.

Hydro One is continuing to work on improving hydro service to the municipality. Thermovision Patrols use an infrared camera to identify hot spots in equipment so they can be repaired before failing.

In addition, installation of reclosures and electrical fault indicators assist line staff in locating causes of power outages.