

# Stouffville Sun-Tribune

THURSDAY, SEPT. 27, 2007 ■ SERVING THE COMMUNITY OF WHITCHURCH-STOUFFVILLE ■ 32 PAGES/\$1 INCLUDING GST



5 Seventy years after making his first visit, Jim Thomas still big fan of Markham Fair

Opinion ..... 6  
 Things to do ..... 13  
 Sports ..... 25  
 Classified ..... 27

## Emergency fund to help those in dire need

RBC, mayor's tourney kick off fundraising

BY HANNELORE VOLPE  
 Staff Writer

If your family is ever in an emergency situation, a new fund may be able to help.

Residents affected by a fire, car accident or other tragedy, including medical emergencies, could be eligible for assistance from the Whitchurch-Stouffville Emergency Care Fund.

It has been kicked off with two donations. Representatives from RBC of Stouffville and the Mayor's Charity Golf Tournament presented \$1,000 each to the fund this month.

RBC manager and Stouffville resident Kym Pyke presented the idea to local officials earlier this year, after seeing a similar fund work successfully in his native Australia.

"It has the potential to do a lot of good things in our community," Mr. Pyke said.

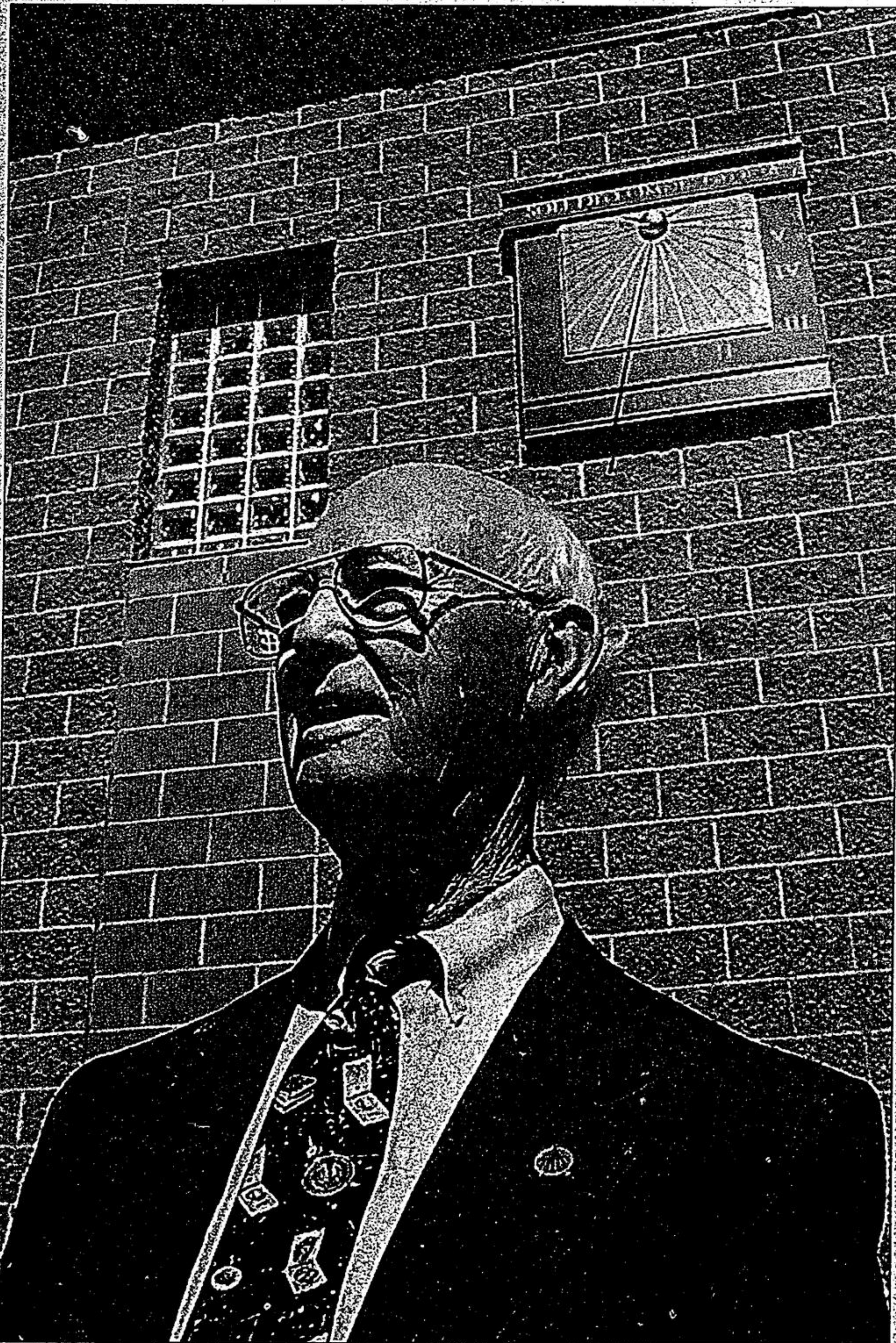
"We could buy them groceries or gasoline or pay a fuel bill in cases of emergency," Mayor Wayne Emmerson said.

The fund is not meant to duplicate, but complement, work being done by Whitchurch-Stouffville's churches, service clubs, food bank or other institutions.

"We want to work with all of those people and help," Mr. Emmerson said. "It would be wonderful if the fund was never

See FUND, page 19.

## DIALLED IN ON THE SUN



STAFF PHOTO/BILL ROBERTS

Dr. Don Petrie unveils a sundial he donated to Christ Church Anglican Sunday. The Stouffville doctor has been a member of the North American Sundial Society for several years and is now its vice-president. He collects the timekeeping instruments and has visited others around the world. See story on page 12.

Ontario  VOTES

KEY ISSUES: Poverty in York Region

## Parties offer poor 'drop in bucket'

Region on brink of disaster: Director of homeless centre

BY CHRIS TRABER  
 Staff Writer

She is caught in a downward spiral fraught with fear, sadness and irony.

Her \$536 monthly welfare cheque must be managed to the penny.

So the 56-year-old single woman lives by candlelight in an illegal rooming house with no hydro.

She desperately wants to interview for a job but the dentist she entrusted to repair her dentures wants full payment, more than half her monthly income, before returning the false teeth.

Her life and situation, she said, is a long series of Catch 22s.

"You can't very well apply for a job with no teeth," she said with a faint laugh. "A lot of people are a couple of paycheques from losing their home. Then, your life unravels."

"If you haven't got physical or mental health problems, living on the street will give them to you. Not having money or a home tears you down and apart."

She is a community college graduate and worked for a major grocery chain until recently. J, as she wished to be identified, lives among opulent homes, old and new, near Yonge Street and Major Mackenzie Drive.

See POLITICIANS, page 8.

**410-AUTO**  
 SPECIALIZING IN  
 Volkswagen • Audi  
 Porsche • European  
 Asian & Hybrid  
 138 Sandiford Dr., Unit 5  
 905-642-2886  
 1-877-410-AUTO  
 www.410auto.ca

**MOLLER INSURANCE**  
 Personalized Insurance Service  
**905-642-2745**  
 ONLINE QUOTES • 64 Sandiford Drive, Unit 1, Stouffville • www.mollerinsurance.com

**Antwerp Diamonds**  
**Barthau Jewellers**  
 6312 Main St.  
 905-640-4646