

**ROYAL LEPAGE**

[www.royallepage.ca](http://www.royallepage.ca)

Helping you is what we do.

# YOUR COMMUNITY REALTY

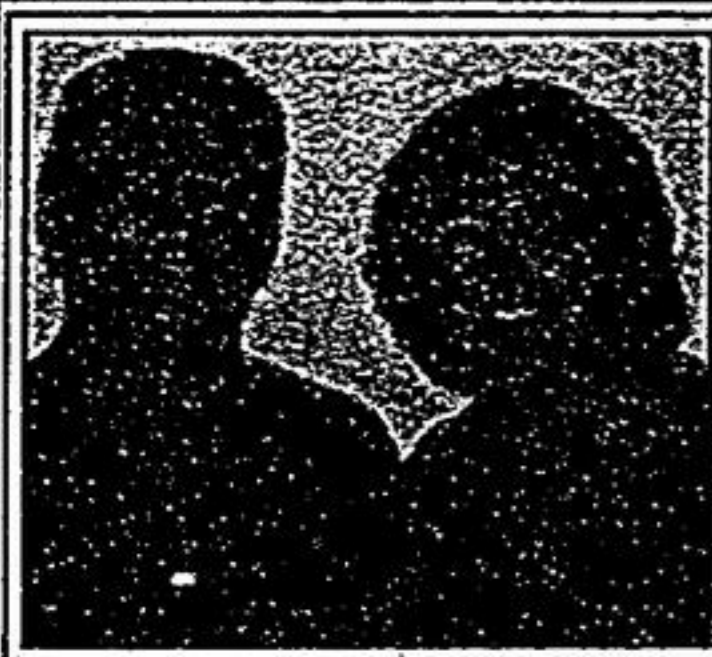
**Markham/Unionville**

**(905) 940-4180**

**Stouffville**

**(905) 642-6333**

Visit us at [www.royallepage.ca/unionville](http://www.royallepage.ca/unionville) or email us at [unionville@royallepage.ca](mailto:unionville@royallepage.ca)



**MICHELE & FRANK JAGO\***

**(905) 642 6333**

**(905) 940 4180**

[www.jagohomes.com](http://www.jagohomes.com)

Proud to be part of Your Community

**CALL FOR A PRIVATE SHOWING - 6 BEDROOM HOME IN STOUFFVILLE**



**A MAIN FLOOR 2 BEDROOM IN LAW SUITE**

Is Featured in this Beautifully Maintained 6 Bedroom Home. Main Floor Walkouts from both the Main Kitchen and the In Law Kitchen to a Beautiful Fully Fenced Private Backyard. Finished Basement. New Air (2 Years), New High Efficiency Furnace (3 Years), Newer Shingles and Upgraded Broadloom.

**\$389,900**

**PICTURES & FEATURES VISIT: [www.jagohomes.com](http://www.jagohomes.com)**



**Marilyn Parsons\***  
**905-940-4180**

•Award Of Excellence 2006  
•Presidents Gold Award 2006

**POPULAR BUNGALOW WITH LOFT & DOUBLE CAR GARAGE - FIN LOWER AREA!**



**OPEN HOUSE SUNDAY 2-4 PM**

**\$543,900**

ATTN: Empty-nesters! Live on main flr, guest suite w/full bath on loft area! Professionally fin bsmt has extra bdrm + 3 pc. Extras incl: hwd flrs, vaulted ceilings, California shutters, RI C/Vac, w/o to interlock patio & private yard! Flex closing! **26 Cliveden Place.**



**905-940-4180**

PLATINUM AWARD 04-06

Virtual Tours @ [www.annecairns.ca](http://www.annecairns.ca)

**BEAUTIFUL NEWMARKET SEMI-DETACHED**

**COMING SOON!**



Tastefully Decorated, Immaculate 3 Bedroom in Desirable Area, with Hardwood Floor on Main & California Shutters. Close to 404. Great Value! Must See!



**Luxury Low-Rise Condominiums Starting in the Low \$300,000 range**

Call Ruth Klem\* or Brian Klem\*\* for Priority Registration **905-940-4180**



**RITA CHEMILIAN**  
Broker  
905-940-4180



**OPEN HOUSE SUNDAY 2-4 72 RAEVIEW DR. STOUFFVILLE**



**\$895,000**  
BACKS TO GOLF COURSE Premium 1.7 acre lot in Sleepy Hollow Estates. 5 Bdrm, 4500 sq. ft. Home w/9 & 10 ft Ceilings, 3 Car Gar, Hwd Flrs T/Out, 2nd Service Stairs. A Great Community!

**BUNGALOW ON AN ESTATE LOT**



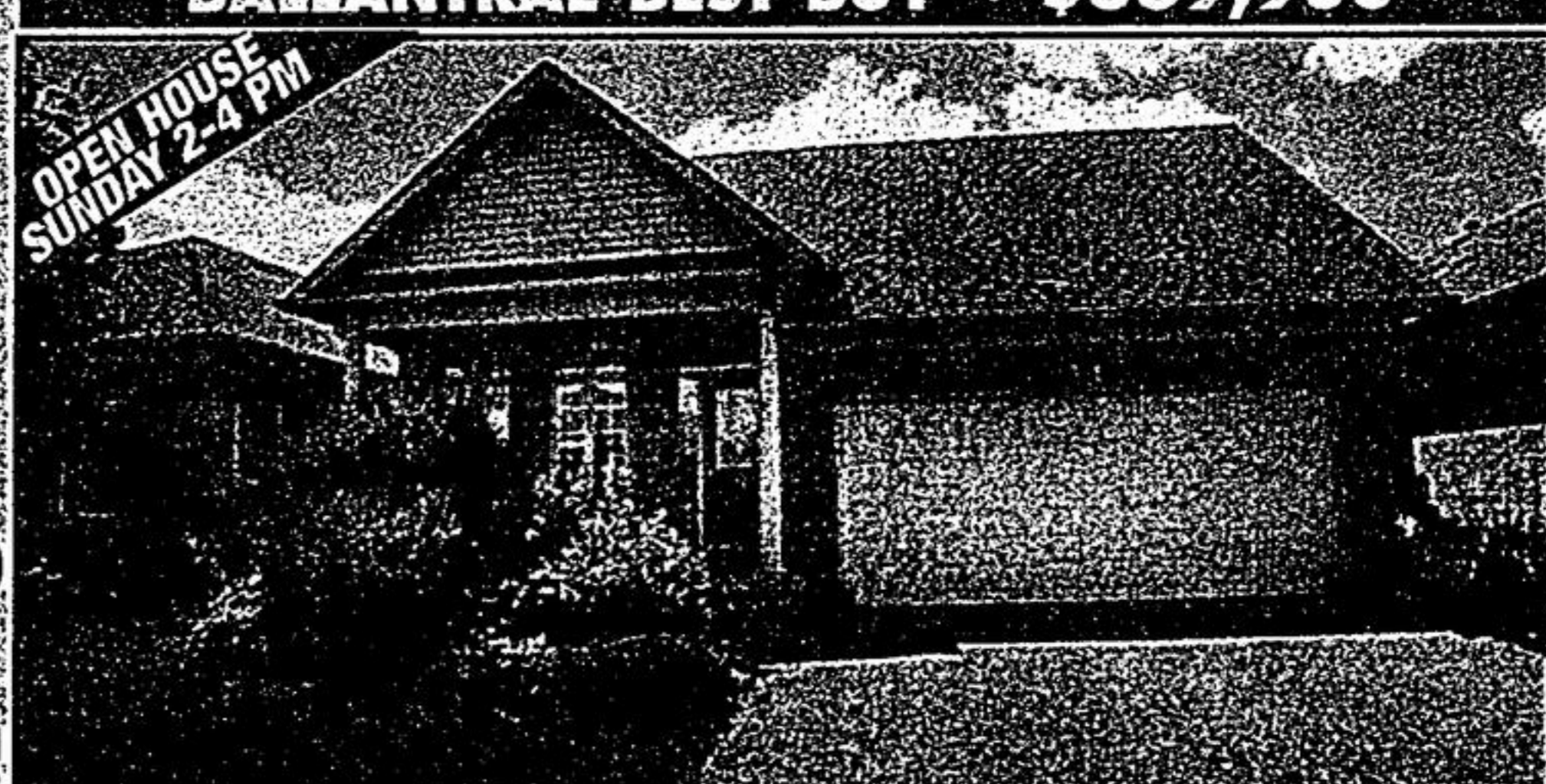
**\$999,000**  
STOUFFVILLE WOODBINE/BLOOMINGTON Quality Custom Built Bungalow over 3000 sq ft plus Finished Lower Level. Minutes to Hwy #404. Enjoy Private Beach Privileges. Let's MAKE A DEAL!



**CAROLE DANARD**  
Broker  
905-940-4180

**ROYAL LEPAGE**  
YOUR COMMUNITY REALTY BROKERAGE

**BALLANTRAE BEST BUY ~ \$389,900**



**OPEN HOUSE SUNDAY 2-4 PM**

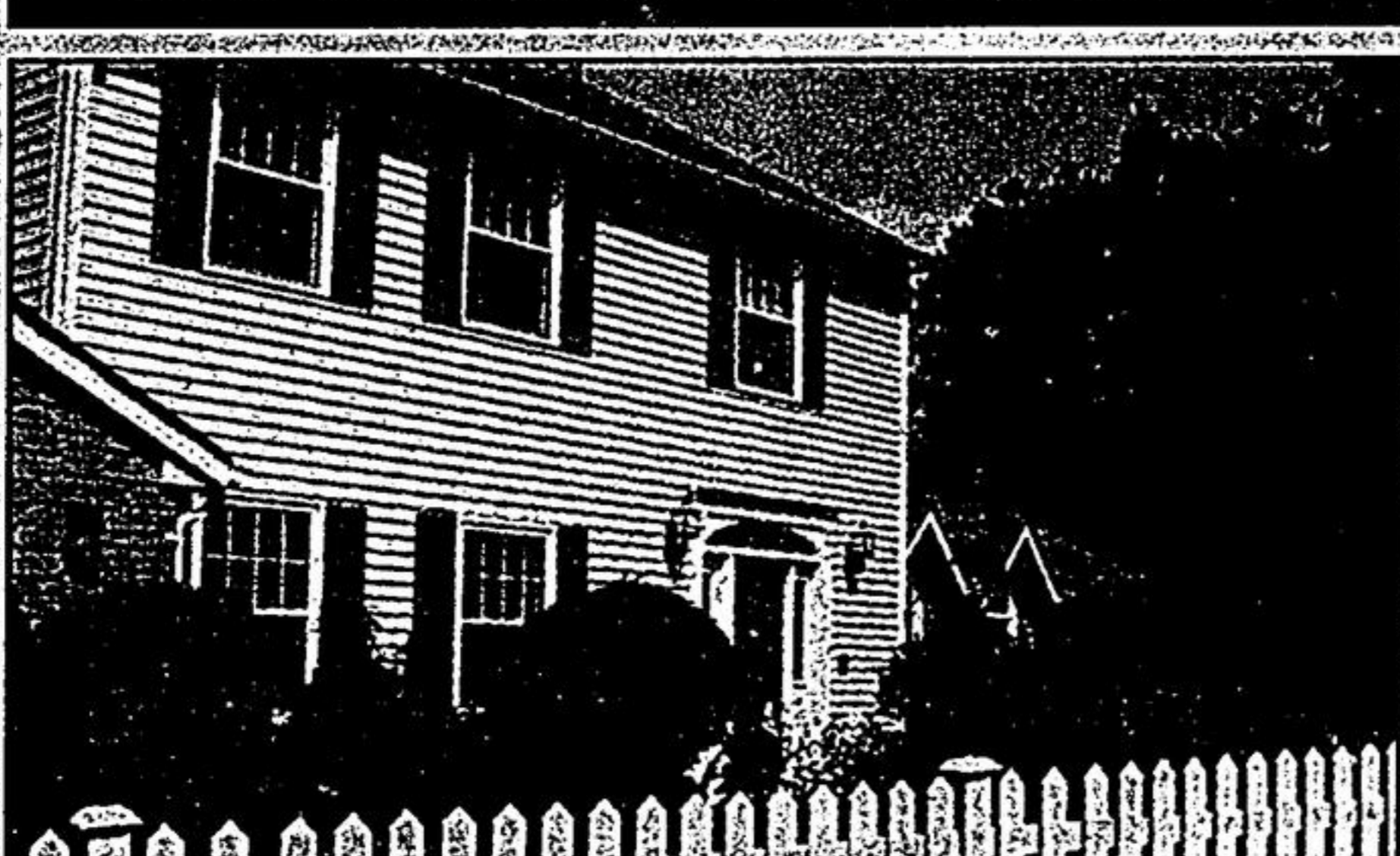
Check out the "Adult Lifestyle Community" located at Hwy 48 & Aurora Sd Rd. "Pinehurst" Model approx 1700 sq. ft. 2 Bedrooms, 2 Baths, 6 Appliances. Maintenance Fees \$340/month. **14 Arnie's Chance.**



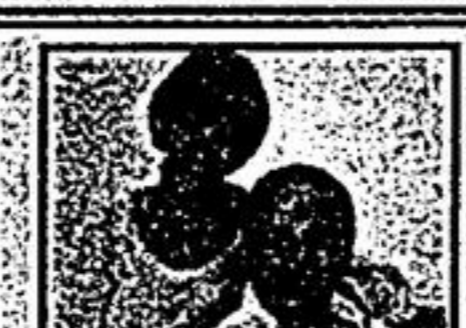
**Sandra Mason-Grossi\***  
**Dorothy Mason\*\***  
940-4180  
"45 Years Combined Expert Service"

Out of the ordinary! Your country dream minutes to Unionville. Customized family home nestled on treed ravine lot with stream. Welcoming foyer with fireplace, country kitchen w/o to pool. Separate living and dining rms. Extensive decking, patios and gazebo. Sep. In law suite. A rare opportunity to enjoy nature, close to amenities! Call for exciting details!

**CHARMING CAPE COD**

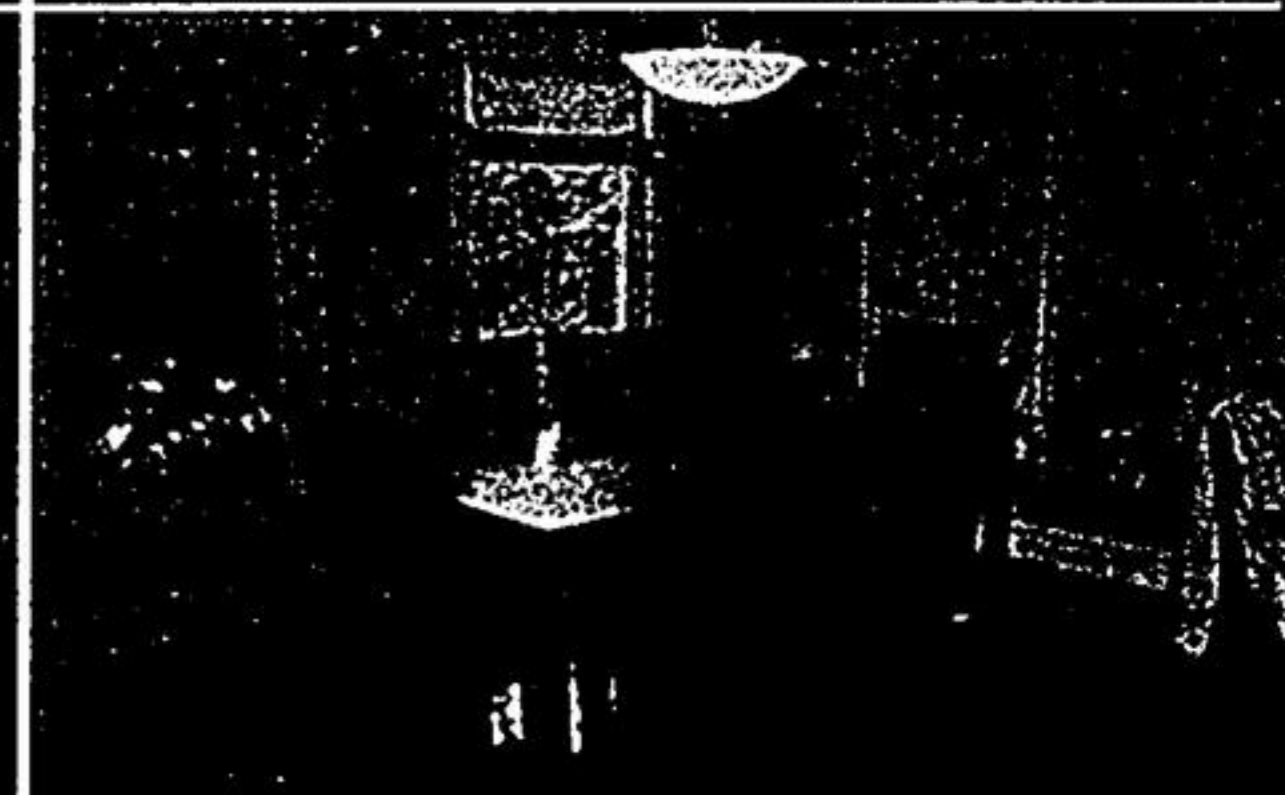


FOR PERSONAL SERVICE AND QUICK RESULTS CALL DOROTHY\*\* OR SANDRA MASON\* 905-940-4180



**Debbie & Len**  
**Feature Home of the Week**

**NEW LISTING! OPEN HOUSE SUNDAY 1-4 PM - 5 KERRIGAN CRESCENT**



•Absolute Showpiece. Hundreds of Thousands Spent on Renovations/Upgrades!  
•Stunning New Kit w/Granite Countertops/Flooring  
•Rich Maple Flng T/Out Upstairs & Most of Main Level  
•Finished Lower Level w/Spacious Rec Rm; Bar, Sauna, 3 Pc Bath & Professional Gym including Equipment!  
•Picturesque Backyard - Inground Pool, Cabana.  
•Don't Miss This One!! Flexible Possession

**CALL FOR YOUR PRIVATE VIEWING OR ATTEND OUR OPEN HOUSE SUNDAY! CALL DEBBIE & LEN POWELL\* AT 905-940-4180 [debbieandlen@rogers.com](mailto:debbieandlen@rogers.com)**