

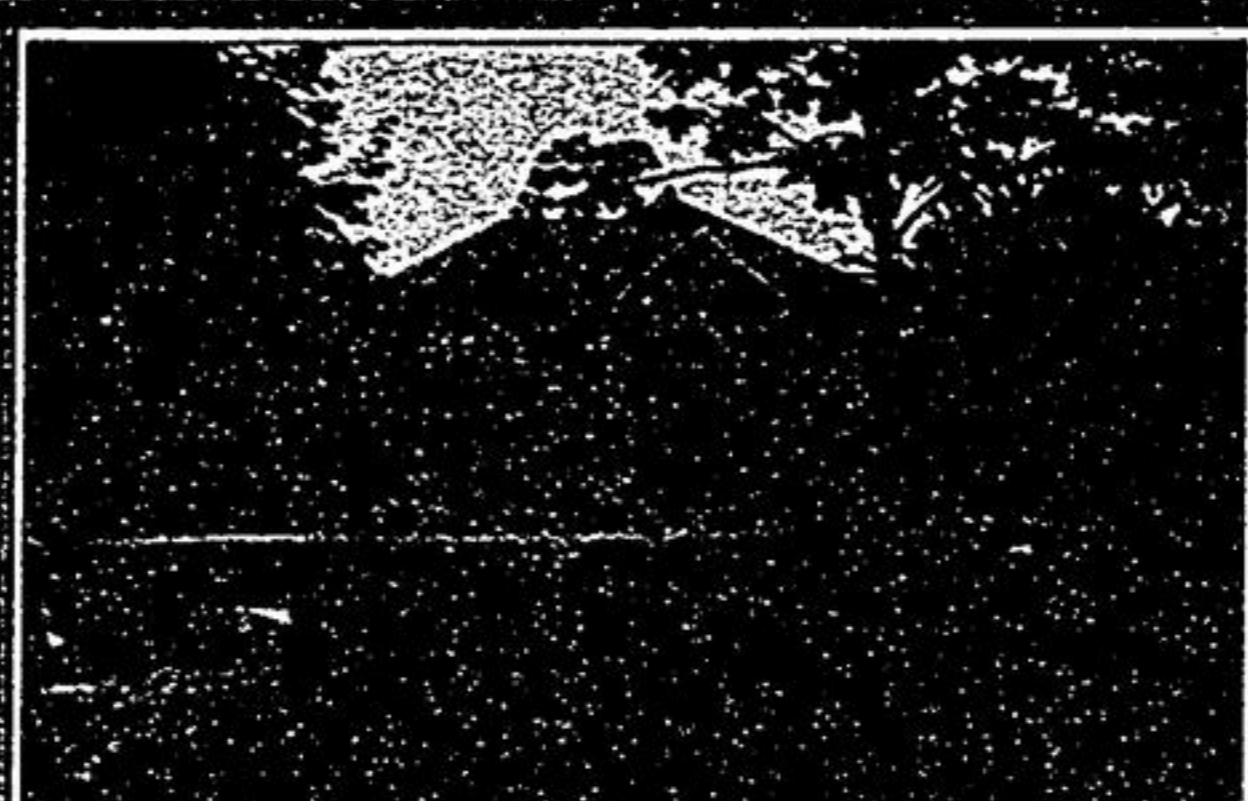


SYLVIA HOUGHTON & TEAM

Derek Houghton (Broker/Owner)
141 Main St., Unionville (905) 947-9300



7 ROYAL TROON BECKONS 'Y-O-U'
Custom to perfection. Grand & Gracious! Combined Dining & Living, hardwood, oval office, media room (unbelievable). A quaint inground pool - backyard. A "5" Star. Come see, come sigh! Come own!!! Call Sylvia* & Dave* Houghton, 905-947-9300. CH 260



2.7 ACRES CUSTOM EXECUTIVE - \$1,888,000
Approx 5400 sq. ft. 4 bedrooms, 4 washrooms. Formal living/dining, centre island kitchen, built-in appliances. French doors, fireplaces, walkout basement. Treed ravine lot. 3 car garage. Call Sylvia Houghton*, 905-947-9300. CH 260



HAVE A PENCHANT FOR PERFECTION? - \$1,698,000
Then this home is for you! A builder's own home on 120 ft lot, 4+1 bedrooms (could be the nanny's), 5 washrooms, 3 fireplaces, 6 rooms on main level. Exquisite hardwood, surround stereo in each room. Travertine, pot lights, sconce lighting, Koller faucets, Toto toilets, everything thought of. Call Sylvia Houghton*, 905-947-9300. CH 260



AN ARCHITECTURAL DELIGHT! - \$1,577,000
173 ft lot, approx 4800 sq ft of custom perfection. 5+1 bedrooms, 5 washrooms. Stunning decor. Finished basement, 10 ft ceilings on main level. Beautiful curved staircase. So many incredible features, come see for yourself!! Call Sylvia Houghton*, 905-947-9300. CH 260



CUSTOM HOME ON 1.4 ACRES TRAIL OF THE WOODS - \$1,188,000
Approx 4400 sq ft plus approx 2000 sq ft finished basement. 4+1 bedrooms, 5 washrooms. Library, solarium, family room all on main level. Fireplace in master. Inground pool plus many more fine features. See it today with Sylvia Houghton*, 905-947-9300. CH 260



DISTINCTIVE BUNGALOW - \$897,000 - CAMELOT
2 acres, premium treed lot, stunning 3 bedroom bungalow plus a library. Gas heating, drilled well, 3 car garage, walking trails, beautifully upgraded. Granite countertops, 4 baths. Call today! Sylvia Houghton* or Katherine Morgan*, 905-947-9300. CH 260



A TOP TO BOTTON STUNNING HOME - \$888,000
\$300,000 in upgrades. 4+1 bedrooms, 5 washrooms. Finished basement. Hardwood, crown mouldings, French doors. Marble entrance, Grecian dining room. "Shane Baghar" designed beautiful botanical gardens. Total privacy on 120 ft lot. Call Sylvia Houghton*, 905-947-9300. CH 260



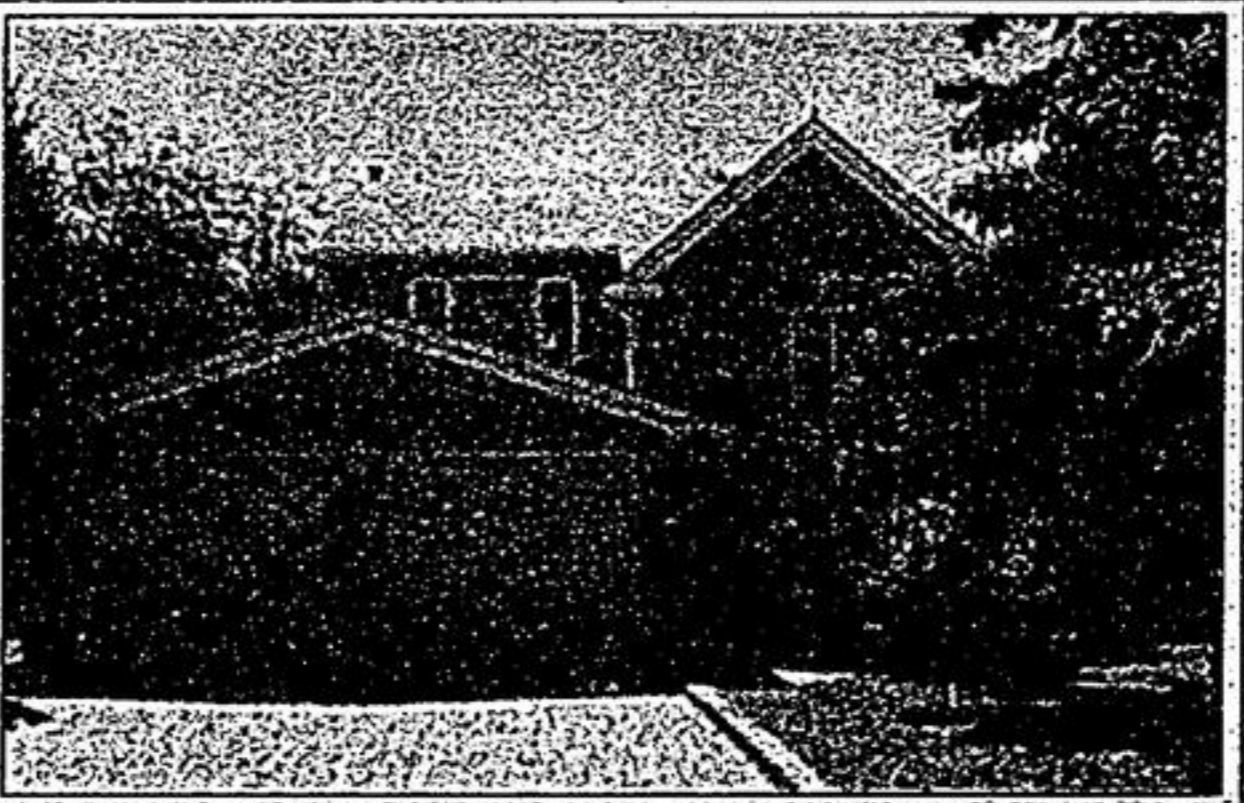
GORGEOUS SUNSETS CALIFORNIA BUNGALOW - \$858,000
3+2 bedrooms w/w/o to deck & 4 pc ensuite in master. Cathedral ceiling in liv/din + kitchen, gleaming maple hardwood thruout main floor. Fully finished bsmt w/bar, games room & walkout, 2 fireplaces, 120x842 waterfront lot. Call Derek Houghton*, 905-947-9300 or www.derekhoughton.com. CH 260



EMERALD HILLS GOLF COMMUNITY - \$848,000
An amazing bungalow with loft, 4 bedrooms in all. Approx 3523 sq ft. Exquisite hardwood floors. 11 ft ceilings in living/dining rooms. Centre island kitchen, library and family room on main level. A stunning home! Call Sylvia Houghton*, 905-947-9300. CH 260



FIRST CLASS ALL THE WAY! - \$848,000
5 bedrooms, 4 washrooms. Formal living/dining. Beautiful renovated kitchen with walkout to deck. Approx 3300 sq ft. Updated hi-eff furnace. Every renovation is magnificent! Call for the complete list including the pool! Sylvia Houghton*, 905-947-9300. CH 260



15 ADDINGTON SQ. UNIONVILLE - \$775,500
LOCATION - A "10"
Immaculate, well maintained home. Bright open foyer. 4 spacious bedrooms. Hardwood floors on main level. Walkout to covered deck. Walk to schools, pond & parks. Call Sylvia Houghton* or Clennie Fraser-Mangialardi*, 905-947-9300. CH 260



RICHMOND HILL - \$699,700
Executive 4+1 bedroom home with 4 washrooms. Centre island kitchen, built-in appliances. Formal living/dining, family room with gas fireplace. Turn key appointed. Call Sylvia Houghton* for more details, 905-947-9300. CH 260

MOVE UP TO THESE HOMES AND "SYLVIA HOUGHTON" WILL BUY YOUR HOME FOR "C-A-S-H"!



S-T-U-N-N-I-N-G UNIONVILLE - \$668,000
Thousands spent! An outstanding executive home in Unionville. Beautiful kitchen with granite counters open to the family room, walkout to deck, amazing ensuite, professionally finished walkout bsmt & so much more! Call Sylvia Houghton* or Sherry Hayes*, 905-947-9300. CH 260



COMMERCIAL IN WEST BEAVER CREEK - \$668,000
3100 sq ft plus unfinished basement, main floor has large reception, 3 offices, 2 washrooms plus large boardroom. 2nd floor has 7 offices, 2 washrooms and kitchen. Commerce Gardens. Leslie exposure, close to 404/407. Call Derek Houghton*, 905-947-9300 or www.derekhoughton.com. CH 260



PRIDE OF ITS NEIGHBORHOOD - \$588,000
Over 3100 sq ft upgraded home in Legacy. Spolless. Shows to perfection! Over \$80,000 in upgrades. Hardwood floors, granite countertops, California shutters. Professionally landscaped & decking, library. Call today Sylvia Houghton* or Katherine Morgan*, 905-947-9300. CH 260



APPROX 2900 SF MCCOWAN/16TH - \$548,800
4 large bedrooms w/5 pc ensuite & w/in closet. Huge gourmet kitchen w/w/out to large deck open to main floor family room w/gas fireplace, separate living/dining rooms, 3ft ceilings, main floor laundry w/garage access, premium pie shaped lot. Call Derek Houghton*, 905-947-9300 or www.derekhoughton.com. CH 260



CRESCENT LOCATION, STOUFFVILLE - \$529,000
Upgraded family home features beautiful kitchen with granite counters, skylights & walkout to yard. 4+1 bedrooms, prof finished basement with walkout to yard, fantastic location! A must see!!! Call Sylvia Houghton* or Sherry Hayes*, 905-947-9300. CH 260



ANGUS GLEN GEM!!! - \$477,000
Gorgeous detached home on a premium lot. Professionally decorated and painted. 3 bedrooms, 3 washrooms. Fully fenced and landscaped yard!!! A "10". Call Dave Houghton*, 905-947-9300. CH 260



BRAND NEW & READY FOR YOU! OFF REEVE DR. - \$517,000 - 59 JAMES WALKER
4 bedrooms, 4 washrooms. Finished walkout basement. Great room with hardwood & fireplace. Kitchen with breakfast area. Located on child safe court in the heart of Markham Village off the famous Reeve Drive. Call Sylvia Houghton*, 905-947-9300. CH 260



CHARMING DESIGN - \$467,000 - 34A WASHINGTON ST.
Brand new 4 bedroom home in the heart of Markham Village. 9' ceiling on main level. Nice combination of broadloom and gleaming hardwood. Large kitchen. Partially finished basement. Call Sylvia Houghton*, 905-947-9300. CH 260

VIEW THESE HOMES ON ROGERS CHANNEL 260

STOUFFVILLE at www.sylviahoughton.ca

Email Address: sthoughton@trebnet.com Web Page Address: www.sylviahoughton.ca

