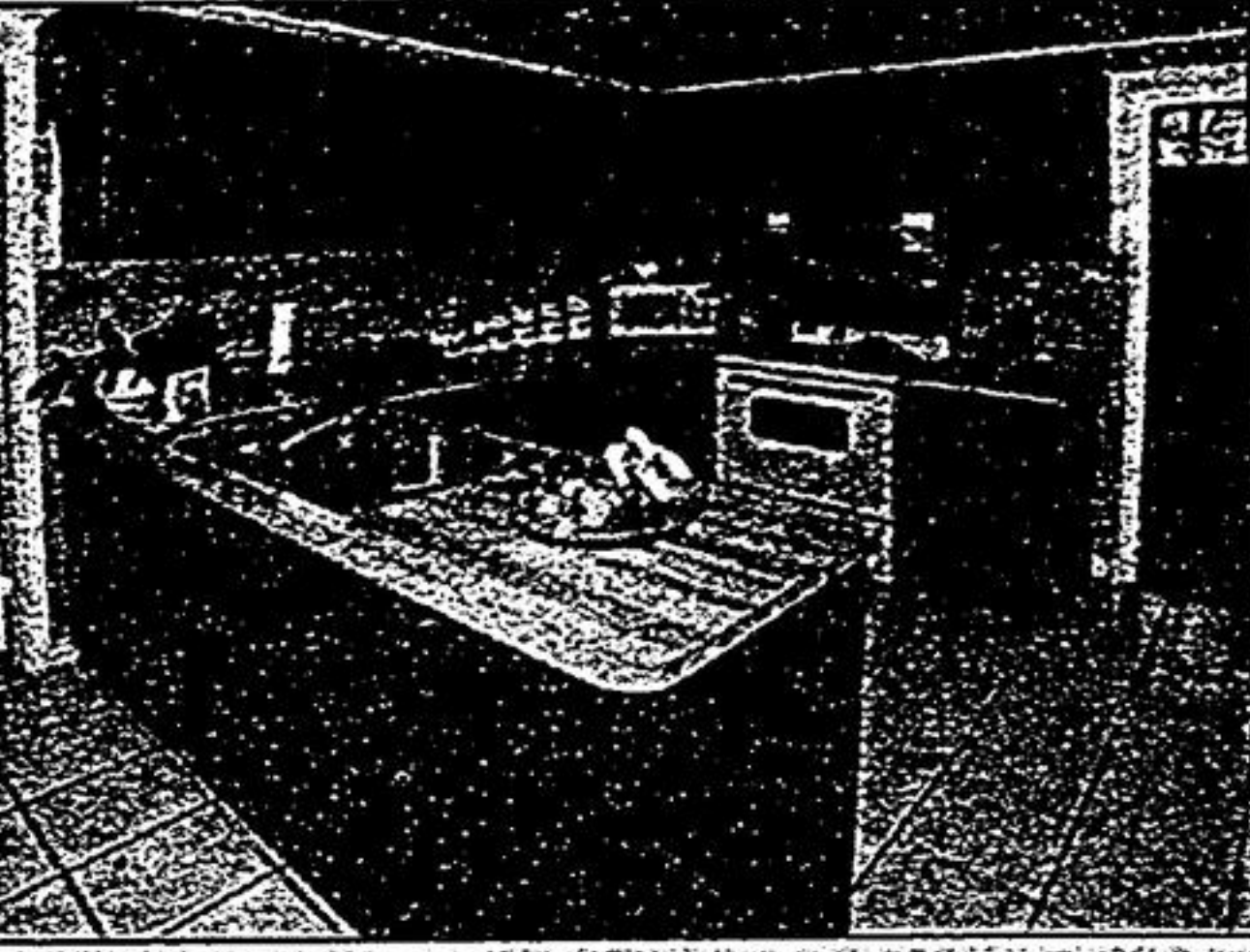


81 LAKE WOODS DR., STOUFFVILLE - \$897,000
Aurora Road, East of 9th Line. "Camelot" 2 acre lot surrounded by trees, custom 3 bedroom bungalow with main floor den, open concept, granite countertops, hardwood floors, 4 baths, 3 car garage. See you Sunday!
Call Sylvia Houghton* & Katherine Morgan*, 905-947-9300. CH 260

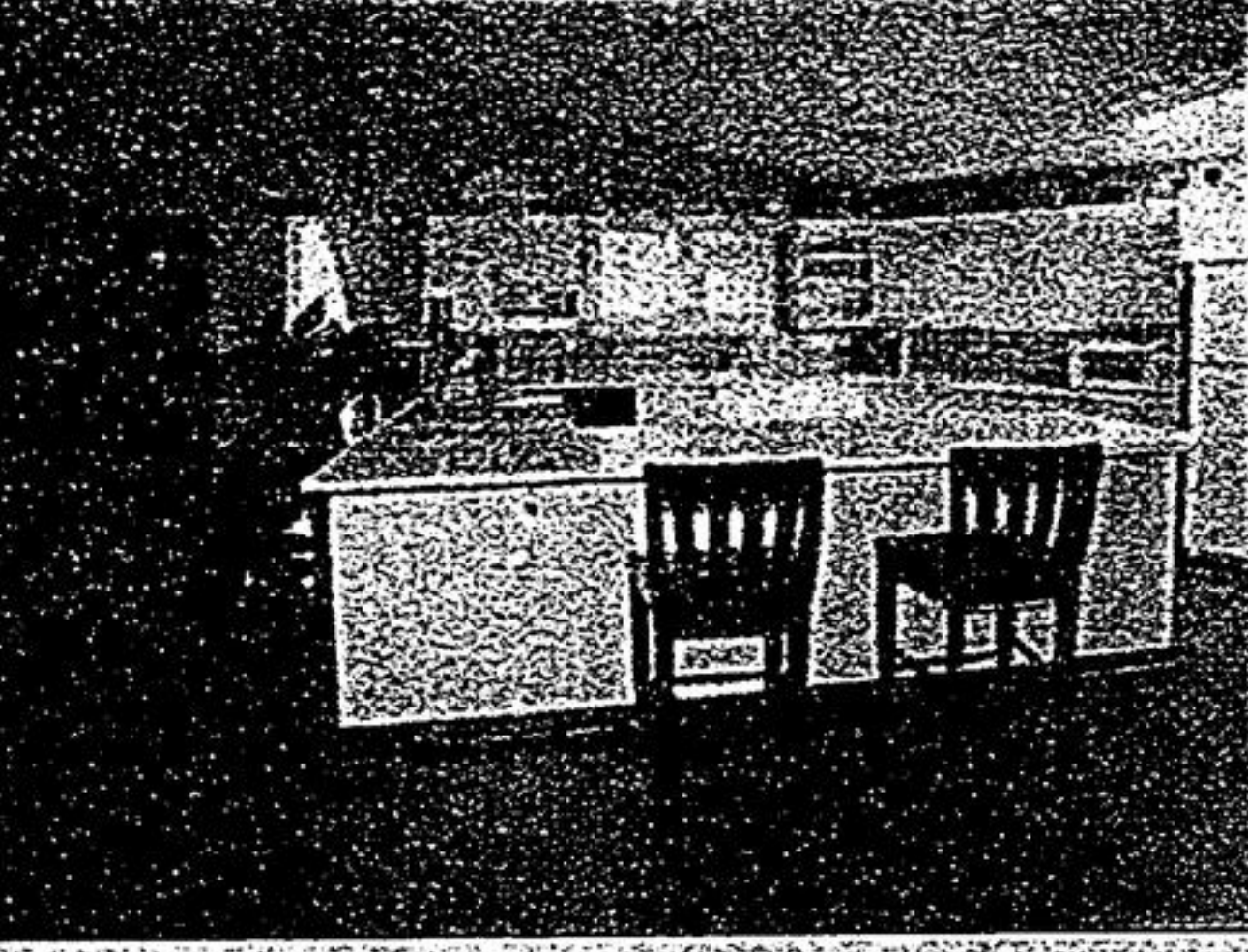
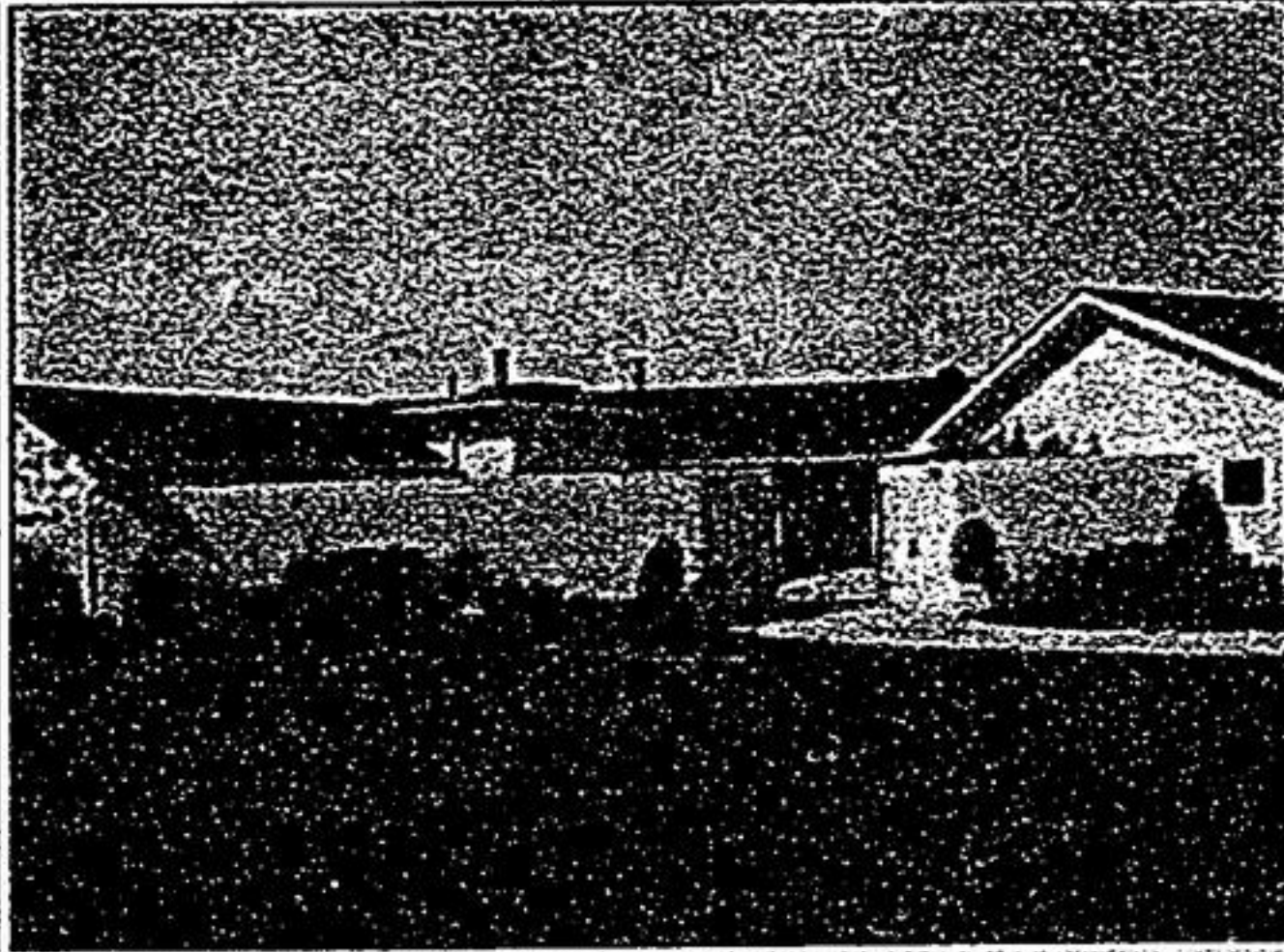


15 ADDINGTON SQUARE, UNIONVILLE - \$775,500
Immaculate, well maintained home. Bright, open foyer. 4 spacious bedrooms. Hardwood floors on main level. Walk to schools, pond and parks.
Call Sylvia Houghton* or Clerie Fraser-Mangialardi*, 905-947-9300. CH 260



"EXCEPTIONAL" UNIONVILLE - 41 LONGWATER CHASE - \$668,000
Thousands spent! An outstanding executive home in Unionville. Beautiful kitchen with granite counters open to the family room, walkout to deck, amazing ensuite, professionally finished walkout basement & so much more!!!
Call Sylvia Houghton* or Sherry Hayes*, 905-947-9300. CH 260

WATERFRONT ON SCUGOG ISLAND - WEST SIDE - \$858,000
California style bungalow with open concept kitchen & great room with cathedral ceilings, beautiful maple hardwood thru-out main floor, 3+2 bedrooms; stunning finished walkout basement with bar area & games room. 120x842 ft lot. 3 car garage. "Unbelievable". Call Derek Houghton**, 905-947-9300 or www.derekhoughton.com CH 260



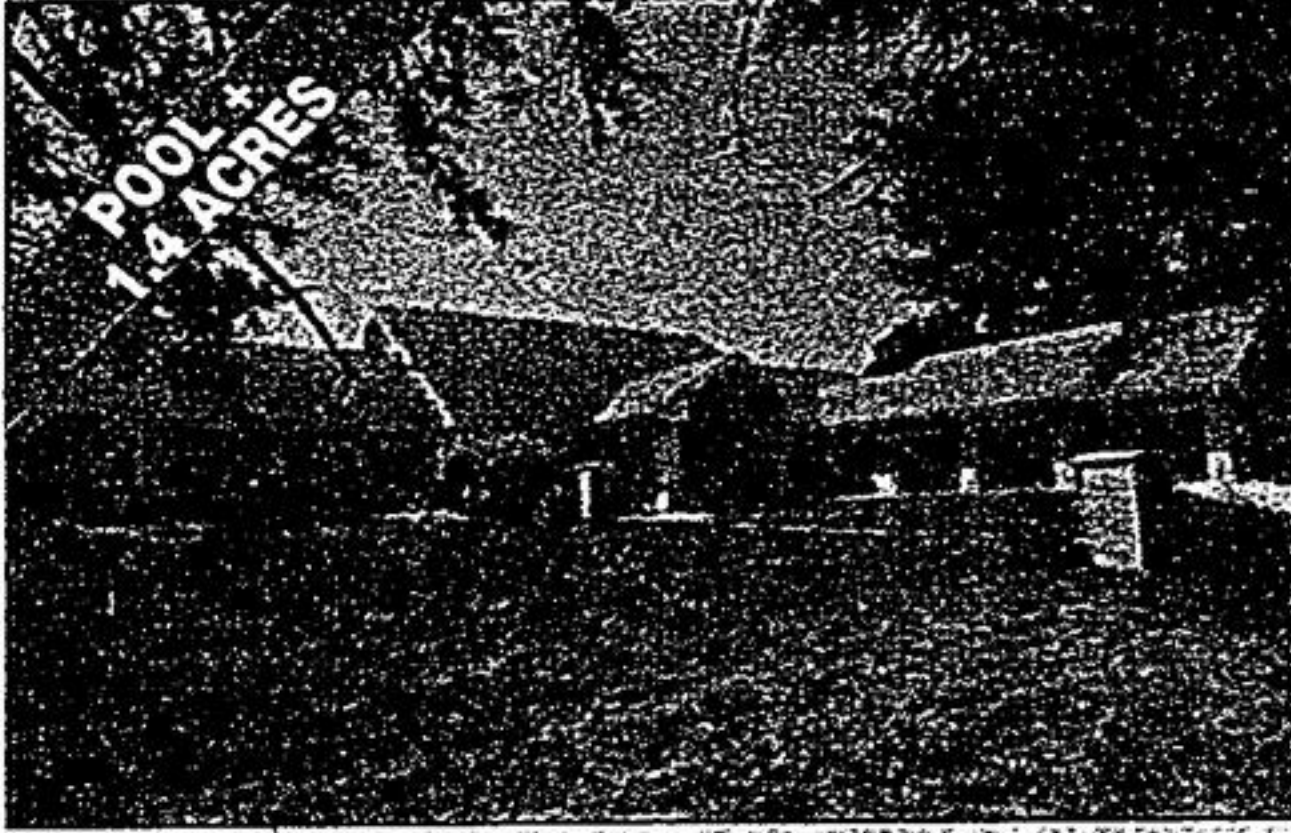
A "CONNOISSEUR'S DELIGHT" - \$2,558,000
"80x180" ft. Stunning lot with '40x20' Pioneer Pool. Impressive landscaping. Patios & deck complete with hot tub, cabana. This exquisite home with new \$130,000 kitchen has approx \$600,000 in incredible updates. 4+2 bedrooms and all the bells & whistles you can imagine. Call Sylvia Houghton*, 905-947-9300. CH 260



5400 SQ FT OF EXCELLENCE ON 2.7 ACRES - \$1,888,000
5 bedrooms, 4 washrooms, walkout basement to treed ravine lot, magnificent kitchen with 5 built-in appliances. Jacuzzi in master. 2 staircases to basement. Formal living/dining. 2 fireplaces. 3 car garage. One of a kind executive home.
Call Sylvia Houghton*, 905-947-9300. CH 260



EXQUISITE DESIGN & DETAIL - \$1,698,000
Walk to Historic Main St. Unionville. Custom to perfection. 4+1 bedrooms. 5 washrooms. 3 fireplaces. Tandem garage (for 3 cars). "Russ" sound thru-out. Stunning hardwood. 5105 sq. ft. of luxury.
Call Sylvia Houghton*, 905-947-9300. CH 260



STOUFFVILLE TRAIL OF THE WOODS - \$1,188,000
4+1 bedroom, approx 4400 sf plus 3600 sf basement (2000 sf fin) with walkout. Stunning in design & detail. Fabulous kitchen with granite floor. The family room, solarium, master bed & library all on main level.
Call Sylvia Houghton* for list of features, 905-947-9300. CH 260

MOVE UP TO THESE HOMES AND "SYLVIA HOUGHTON" WILL BUY YOUR HOME FOR "C-A-S-H"



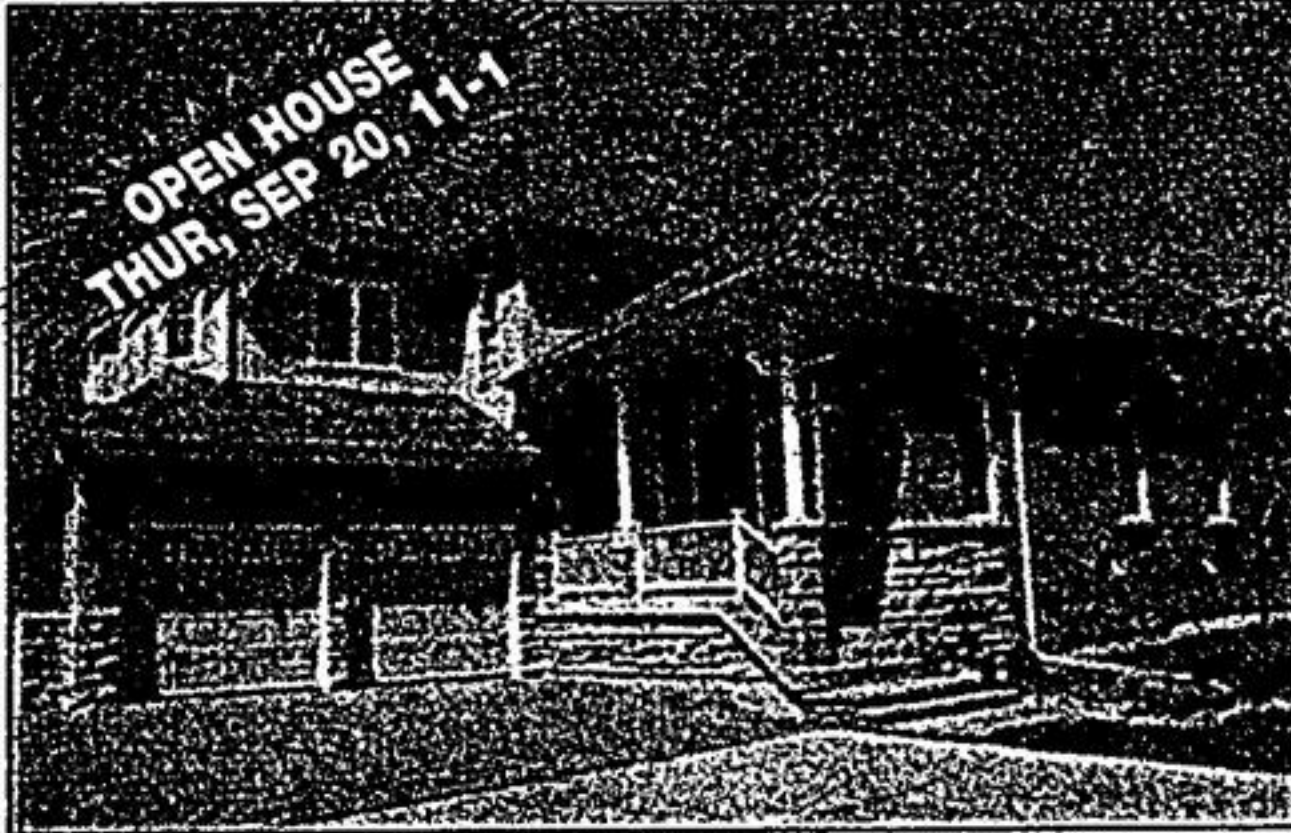
UNSURPASSED QUALITY - 28 SABISTON DR. - \$1,577,000
Unbelievable finishings in this magnificent home with 5+1 bdms, 5 washrms. Finished basement, gourmet kitchen, Limestone flrs heated in kit & bsmt. Gleaming hwdwd, pot lights galore, even a 400 amp back up generator + internet cable in every rm & an incredible list of upgrades. Call Sylvia Houghton*, 905-947-9300. CH 260



BRAND NEW AND BEAUTIFUL - \$517,000
Child safe court, 9' ceilings, oak staircase, finished basement with walkout. 4 bedrooms, 4 washrooms. Separate dining room. Open concept great room with fireplace. Great location.
Call Sylvia Houghton*, 905-947-9300. CH 260



BRING YOUR FAMILY TO CORNELL!! - \$379,800
This wonderful upgraded home features 3 bedrooms, 3 bathrooms, upgraded kitchen with tall cupboards, centre island, pantry, ceramic backsplash and is open to family room.
Call Sylvia Houghton* or Sherry Hayes*, 905-947-9300. CH 260



28 GLENBURN FOREST WAY - \$739,000
Exclusive "Gated" Community of fine executive townhouses. This bungalow with loft has 3 bedrooms, 3 washrooms. Beautifully appointed thru-out. Built-in appliances, fireplace in great room. Approx 2601 sq. ft. Windows galore.
Sylvia Houghton*, 905-947-9300. CH 260



EXECUTIVE HOME IN 'CATHEDRAL TOWN' - \$677,000
4 bedrooms, 4 washrooms. Hardwood thru-out. Over \$60,000 in upgrades thru-out. Main floor family room plus library. Eat-in kitchen. Gas fireplace. See it today with Sylvia Houghton*, 905-947-9300. CH 260



HIGH DEMAND MATURE AREA, STOUFFVILLE - \$299,000
This charming home features 2 bedrooms, beautiful front porch, located in a very desirable area. Walk to Main Street, buses, train, churches, schools, shops, parks and more!!
Call Sylvia Houghton* or Sherry Hayes*, 905-947-9300. CH 260



I HAVE IT ALL! - \$578,000
Hardwood floors up and down. Marble floors, 4 bedrooms + 4 baths. Newer windows, heat pump, roof and A/C. All baths professionally renovated. Professionally landscaped.
Call David Houghton*, 905-947-9300. CH 260



LEGACY AMBIENCE - \$588,000
All the bells & whistles, totally upgraded 4 bedroom executive with main floor library, California shutters thru-out, 3/4" hardwood on main, granite countertops, custom deck, professional landscaping. A "must see".
Call Sylvia Houghton* or Katherine Morgan*, 905-947-9300. CH 260

VIEW THESE HOMES ON ROGERS CHANNEL 260

VISIT US at www.sylviahoughton.ca

RE/MAX CLASSIC PROPERTIES INC. Email Address: sthoughton@trebnet.com Web Page Address: www.sylviahoughton.ca