

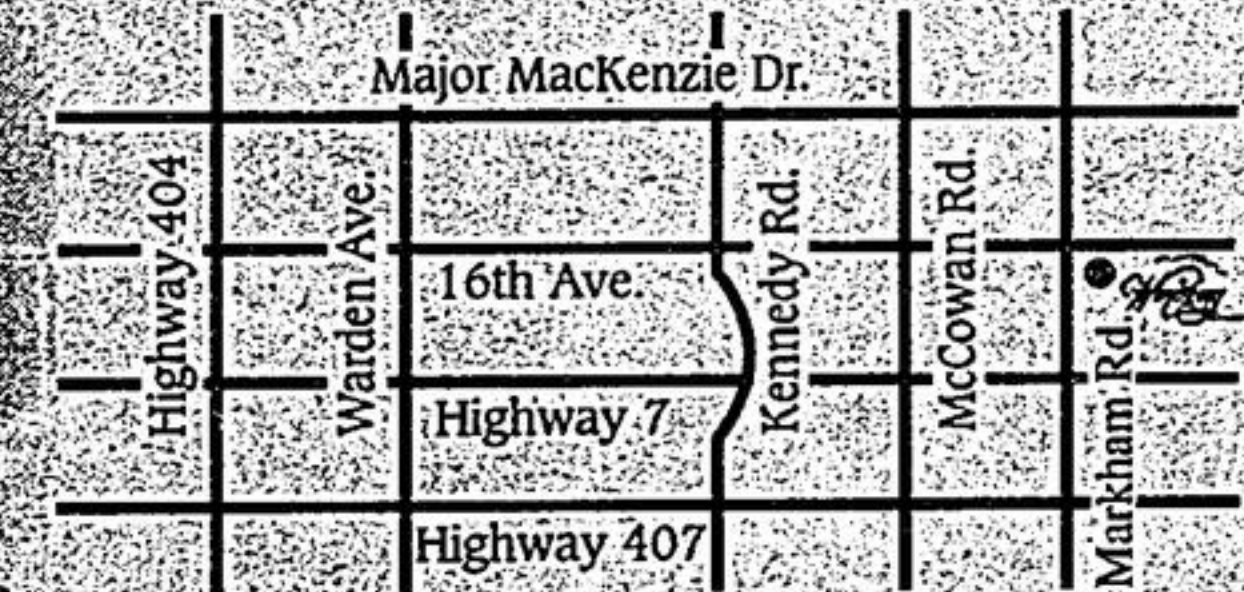
★★★★★ HIGHEST RANKING IN THE J.D. POWER AND ASSOCIATES STUDY FOR CUSTOMER SATISFACTION AMONG NEW HOME BUILDERS IN THE GTA AND ONTARIO & GTHBA-UDI HOME BUILDER OF THE YEAR. ★★★★★

Few Opportunities Remain In Markham's *Elegant* Windsong.



Windsong is one of our most well-established "Widelot" communities. There are a few stately homes available in this master-planned community in the heart of Markham. For "Widelot" living at its finest, visit Windsong and enjoy life to its fullest. These few selections will not last long so please visit at your earliest opportunity.

Thank you.

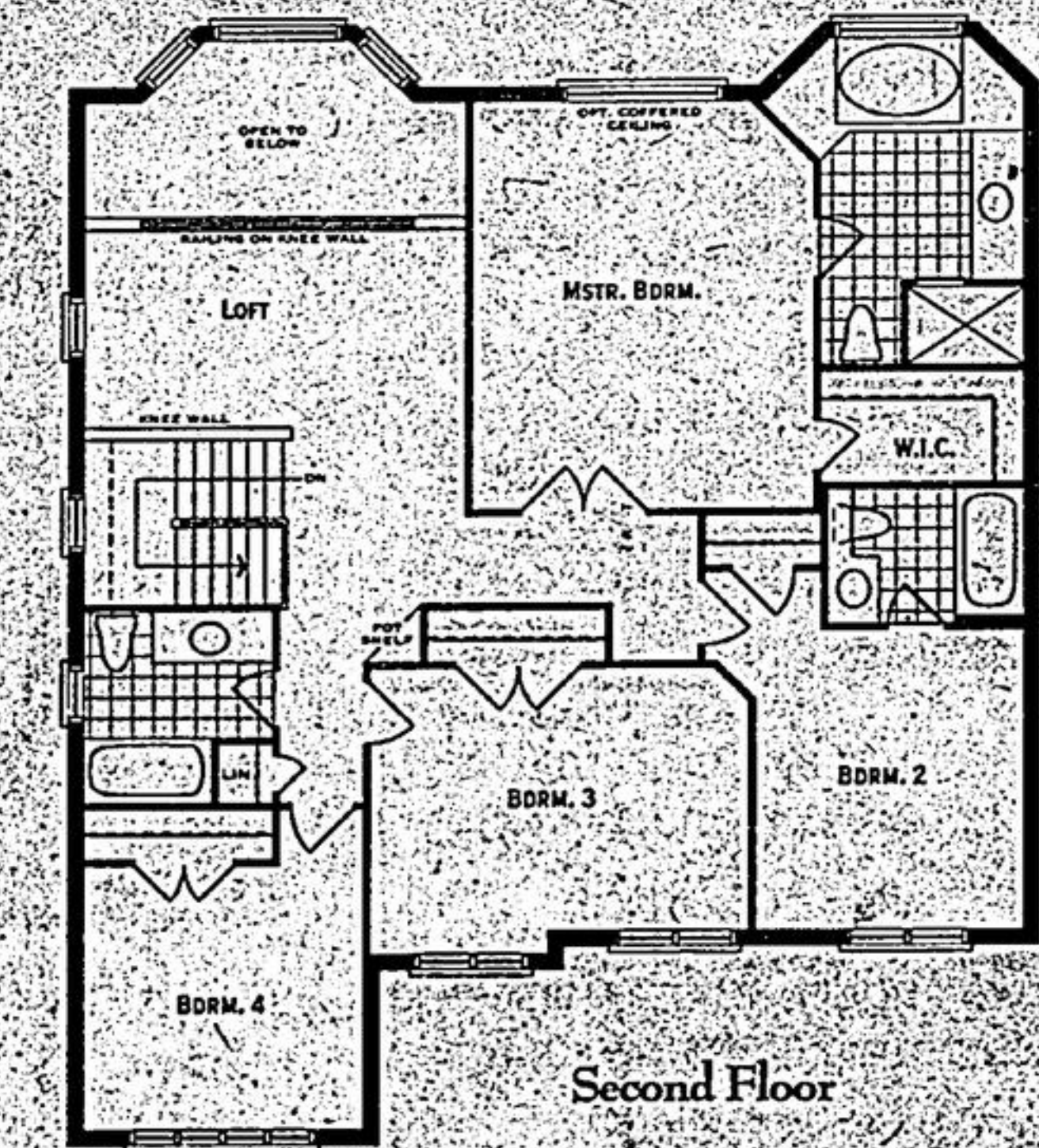
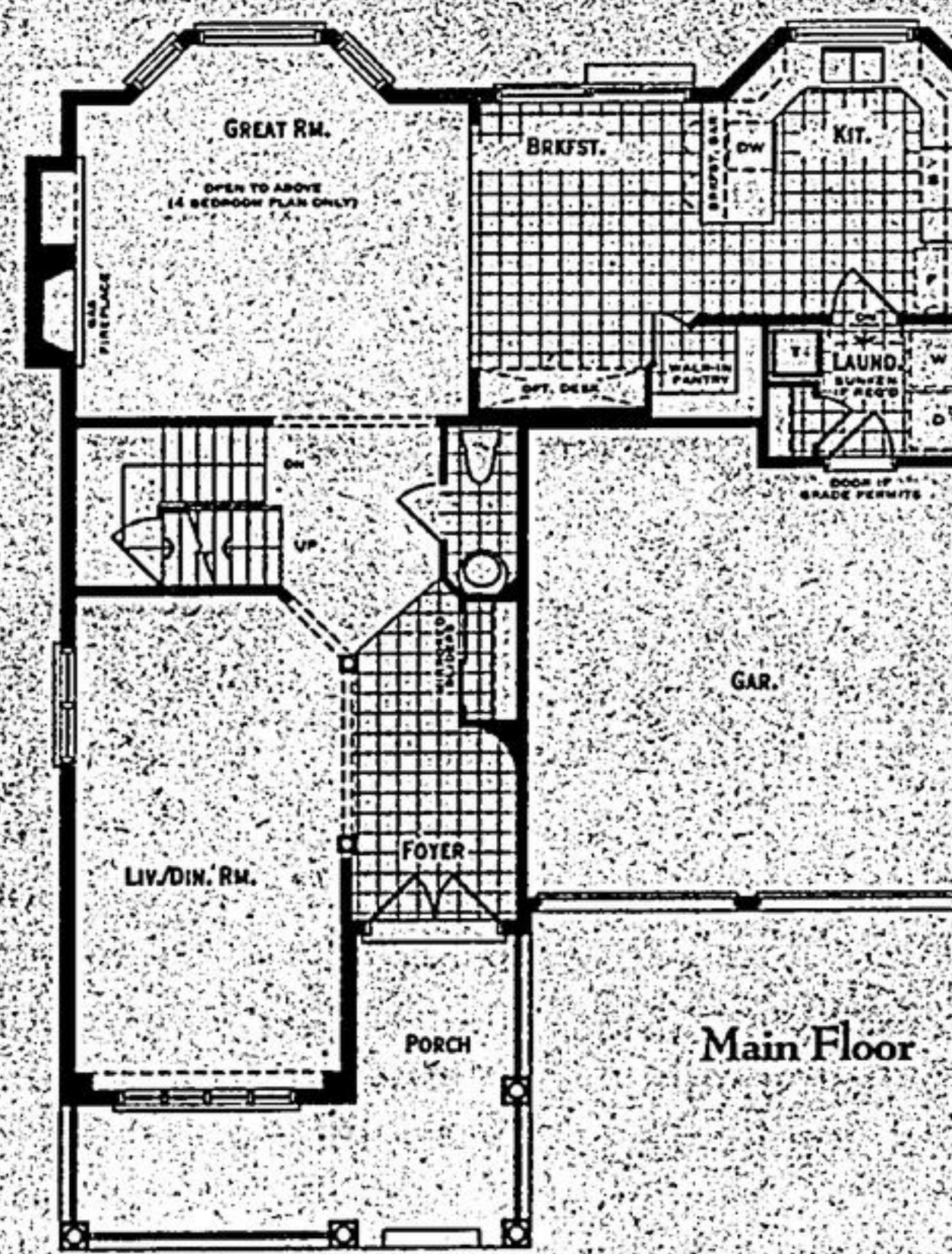


Community Location

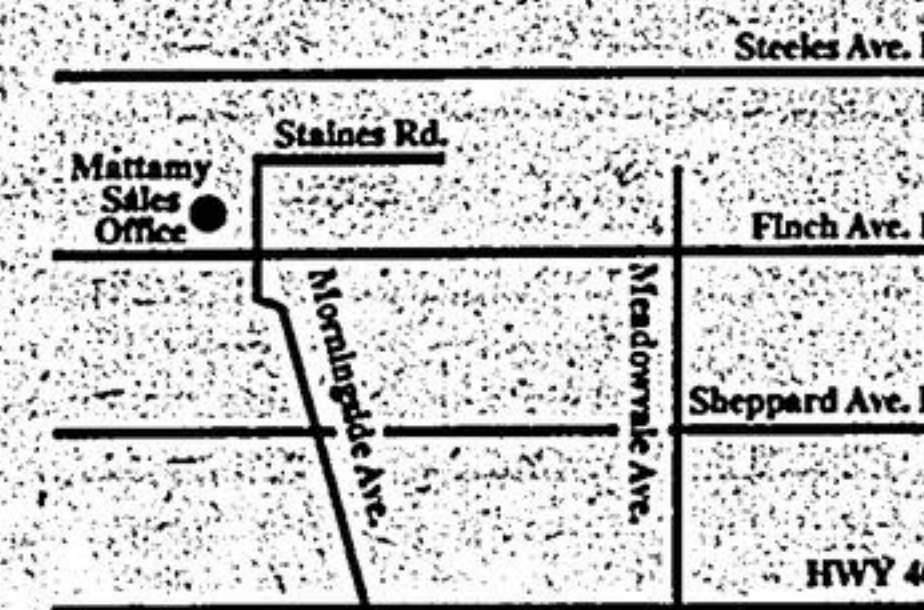
Only 4 Homes Remaining – All Available For Immediate Occupancy



45' WideLot™, The Kingfisher 'A', 2,648 Sq.Ft., \$489,990



Sales Office Location
For More Information Call
416-293-7972



www.mattamyhomes.com

Presentation Centre Hours:
Monday to Thursday 1pm-8pm;
Friday 1pm-6pm; Saturday, Sunday and Holidays 11am-6pm

All illustrations are artist's concept. All dimensions are approximate. Prices, specifications, terms and conditions subject to change without notice. E.O.F.



Smart Designs, Friendly Communities, Satisfied Homeowners.

*"Highest in Customer Satisfaction
With New Home Builders in
the Greater Toronto Area"*

Windsong is a registered trademark of Mattamy Homes. The Greater Toronto Area is defined as the area within a 45-minute drive from the City of Toronto. Mattamy Homes is a registered trademark of Mattamy Homes. © 2007 Mattamy Homes. All rights reserved.