

"Last Summer's Great Deals are Back"

PLUS

OUR BEST PRICES OF THE YEAR!

GET AN EMPLOYEE PRICE DISCOUNT

PLUS

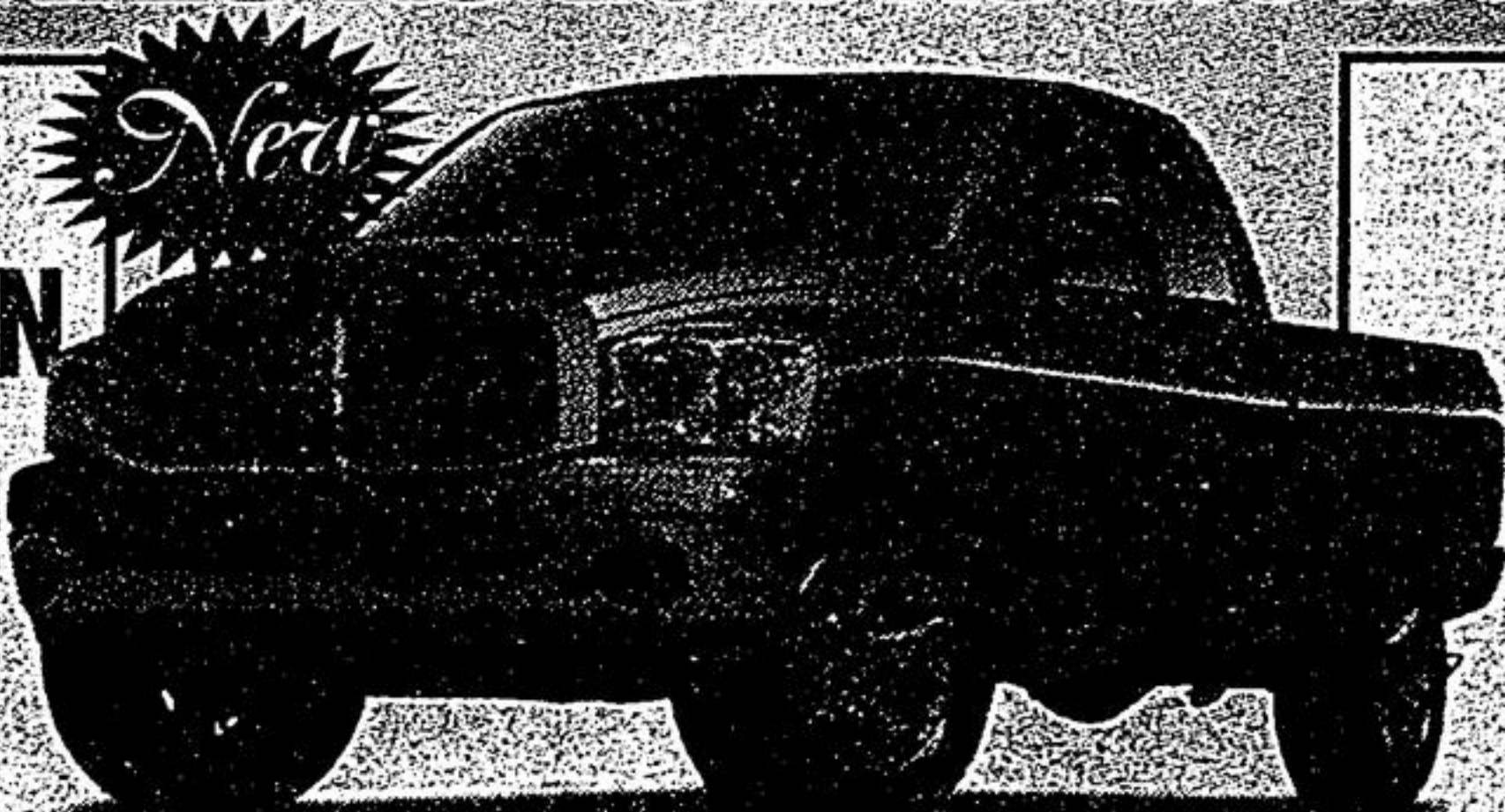
SAVE 20¢/LITRE FOR ONE YEAR ON GAS

SAVE ON GAS FOR ONE FULL YEAR!

**ENHANCEMENT ~ PLUS DELIVERY ALLOWANCE UP TO \$6,200
OR ~ FINANCE RATES AS LOW AS 0.0% FOR 60 MTHS
OR ~ LEASE RATES AS LOW AS 0.0% FOR 48 MTHS**

2007 DODGE RAM ST 1500 QUAD CAB 4X4 SPECIAL EDITON

- Hemi V8 • 5 spd automatic • A/C
- Trailer tow group • PW • PL • Speed control and spin differential • Cloth 40/20/40 split bench and so much more



EMPLOYEE PRICE OF \$30,533

OR LEASE FOR \$399 /MTH \$0 DOWN

EMPLOYEE PRICE OF \$22,995

OR LEASE FOR \$369 /MTH \$0 DOWN PLUS \$1,000 GOVERNMENT FUEL REBATE



2007 CHRYSLER SEBRING TOURING

- Premium cloth buckets • Luxury floor mats • Air conditioning • PW • PL
- 18" Aluminum wheels • 2.7L V6 Flexfuel • Keyless • Convenience group & much more

All sale prices plus taxes, freight, license, admin. and registration fee. Sebring/Dodge Ram 1500 ST lease for 48 months, \$0 down, 20,400 kms/yr, 5.99%/4.49% APR. OAC WITH CHRYSLER FINANCIAL (15¢ excess kms) with only first month payment and license due on delivery. See dealer for details.



www.woodbinechrysler.ca

COME TO WOODBINE CHRYSLER & SAVE YOUR MONEY!!

'04 NISSAN XTERRA XE

4 DOOR, AUTOMATIC, 6 CYL., 4X4, RUNNING BOARDS, A/C, KEYLESS ENTRY PLUS MUCH MORE.

\$23,995

SALE



'05 HONDA ACCORD LX

AUTO, AIR, AM/FM/CD, PW, PL, PM, BUCKET SEATS, SPOILER, AND MORE.

\$16,995

SALE



'04 DODGE SRT-4

TWO SETS OF RIMS & TIRES, 4 DOOR, MANUAL, ALLOY WHEELS, SUNROOF, SPOILER PLUS MUCH MORE.

\$19,995

SALE



'04 DODGE RAM 1500 HEMI SPORT

4 DOOR, AUTO, 5.7L, 4X4, FOG LIGHTS, BED LINER, PS, A/C, CHROME WHEELS PLUS MUCH MORE.

\$26,995

SALE



'04 CHRYSLER PACIFICA AWD

AUTOMATIC, 4 DOOR, 6 CYL., ROOF RACK, SUNROOF, HEATED LEATHER SEATS, NAVIGATION PLUS MUCH MORE.

\$23,995

SOLD



'06 HONDA CIVIC DX-G

4 DOOR, AUTOMATIC, 4 CYL, A/C, AM/FM/CD, PW, PL, PM, ANTI-LOCK BRAKES PLUS MUCH MORE.

\$19,995

SALE



All sale prices are plus taxes, freight, license, admin & registration. See dealer for details.

WOODBINE CHRYSLER



8280 WOODBINE AVE. MARKHAM

(SOUTH OF HWY#7, WEST SIDE, ACROSS FROM COSTCO)

905-415-2260

www.woodbinechrysler.ca

