

Stouffville Sun-Tribune

SATURDAY, JUNE 30, 2007 ■ SERVING THE COMMUNITY OF WHITCHURCH-STOUFFVILLE ■ 24 PAGES/\$1 INCLUDING GST



7 King of classic cars looks for ultimate ride

Safety 4
 Opinion 6
 Sports 11
 Classified 12

Meet Binny, your guide to new green bins

Organic waste pick-up comes to town Sept. 10

BY HANNELORE VOLPE
 Staff Writer

Get ready to get schooled in the art of going green, Whitchurch-Stouffville.

If you're somewhat baffled by the new green bins you'll be receiving in August, you'll get lots of information to help you along.

The new program, which adds a bin for household organic waste to your garbage and recycling collection, comes to Whitchurch-Stouffville the week of Sept. 10.

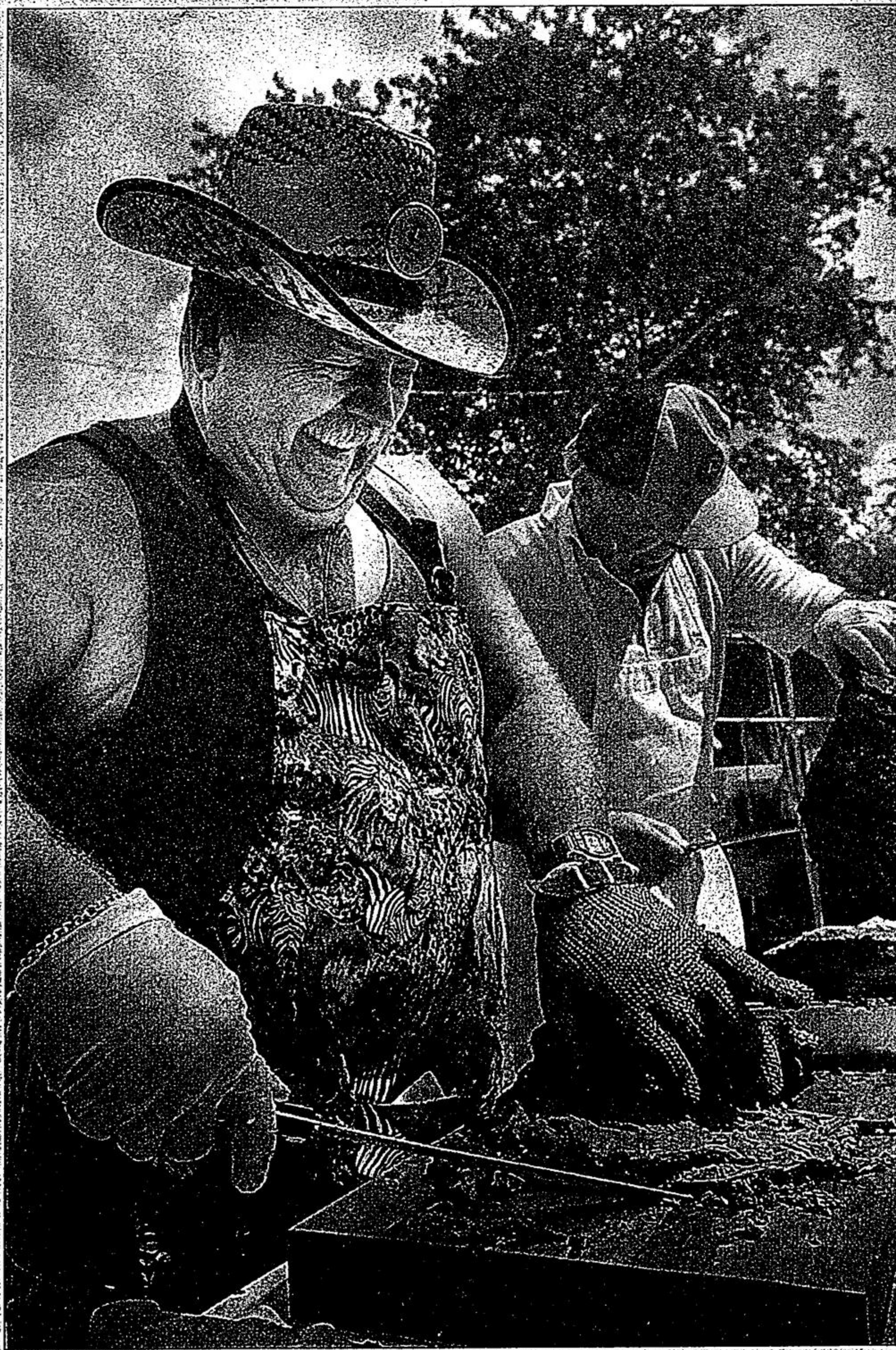
Binny the mascot will highlight the new waste diversion program today at the Strawberry Festival. The mascot represents the large green bin you'll wheel to the curb every week beginning this fall. Binny will visit downtown Stouffville again during Moonlight Madness Aug. 23, an event presented by the Stouffville Business Improvement Area.

Separating household organic waste from the rest of your garbage could keep 65 per cent of the waste generated in York Region out of landfill sites.

Whitchurch-Stouffville is one of the northern six municipalities in York launching the new three-stream waste management program. The others are Aurora, East Gwillimbury, Georgina, King, and Newmarket. The joint effort will save \$11

See NEW, page 8.

FESTIVAL CUTUPS



STAFF PHOTOS/JOERD WITTEVEEN

Stouffville Lions Club members Paul Houston (left) and Fred Karakolis cut up the main course for the club's famous roast beef dinner Thursday, opening day of the 23rd Strawberry Festival. The festival continues through Sunday, with Main Street closed today for the street sale. See additional photos on page 3. For more information, go to strawberryfestival.ca

Lake residents want park

No location chosen but plenty of ideas at meeting

BY HANNELORE VOLPE
 Staff Writer

Musselman's Lake residents do want a park of their own.

That message came out loud and clear Wednesday evening.

About 40 people came to the Ballantrae Community Centre for a meeting on a potential park.

They met with town officials to give their ideas on what kind of park they need, what they would like to see in it and where it could be located.

Deciding where to locate the park was somewhat contentious. If it's on the south side of the lake, residents on the north shore will have to drive to it and vice-versa.

To make it easier to get to the park and increase safety in the area, a sidewalk and bike path system is being proposed for Ninth Line around the lake, town planner Andrew McNeely said. The project is in the town's five-year forecast.

The news was received with an enthusiastic round of applause.

The uniqueness of the Musselman's Lake area was emphasized by Mr. McNeely, who talked about trails that could link to a new park, and the wetlands and forests in this predominantly rural area.

Musselman's Lake is the largest settlement in Whitchurch-Stouffville without a municipal park, Mr. McNeely said.

Residents came up with a rather lengthy wish list, including a park with a water-

See SOME, page 10.

Seaway Pools & Hot Tubs
 27 HERITAGE RD., MARKHAM
 294-8030
 beachcomber HOT TUBS

12TH ANNUAL PREMIERE FINE ART SHOW & SALE
 RAIN OR SHINE
 ACURA

ART & ANTIQUES IN THE PARK
 MARKHAM
 ADMISION
 Adults \$5.00 • Seniors \$3.00
 Kids under 12 Free
 MARKHAM

SATURDAY, JULY 14 & SUNDAY, JULY 15
 10:00AM - 5:00PM
 Markham Museum
 (Hwy. 48 just north of 16th Ave.)
 For more information please call Johanne or Steve at 905-294-2200

OVER 100 ARTISTS, ARTISANS, ANTIQUE DEALERS & COLLECTORS
 SILENT AUCTION
 11:00am - 3:00pm
 Saturday & Sunday
 Creative Kids
 Create your own masterpiece!

Sutton GROUP
 Town and Country Realty Ltd.
 640-0888