

SYLVIA MORRIS

Sales Representative
 905-477-7785 190 MAIN ST., Suite 201, UNIONVILLE
 www.sylviamorris.com



Carolyn Pannell
Sales Representative



Paul Lamanna
Sales Representative



Judy Tessler
Mortgage Specialist

Come & join us on Main St. Unionville on Canada Day, Sunday July 1st
 Music and entertainment. Drop by and say "hello"!

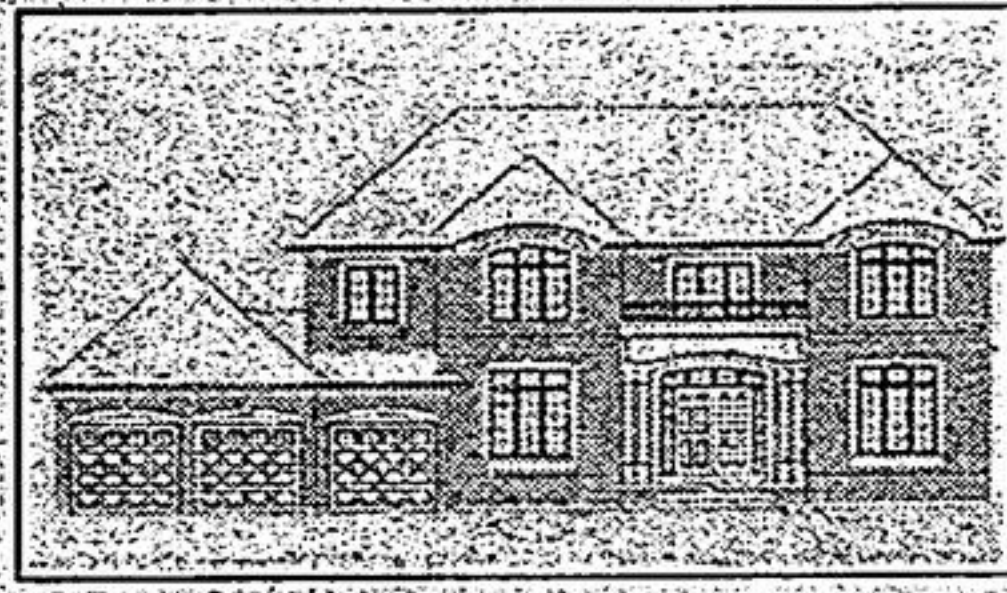


Leading Edge Realty Inc., Brokerage
 Independently Owned and Operated



LOT 3 CAIRO CRT, STOUFFVILLE
 (BLOOMINGTON/10TH LINE)

Custom built country mansion by Chiavatti Homes, approx 1.5 acres, beautifully bred, unbelievable bungalow, approx 2,800 sq. ft. of luxury, triple car garage, loaded w/upgrds, fantastic location, mins to Sleepy Hollow Golf Course, Main St Stouffville, GO Train & 404. **\$809,000**



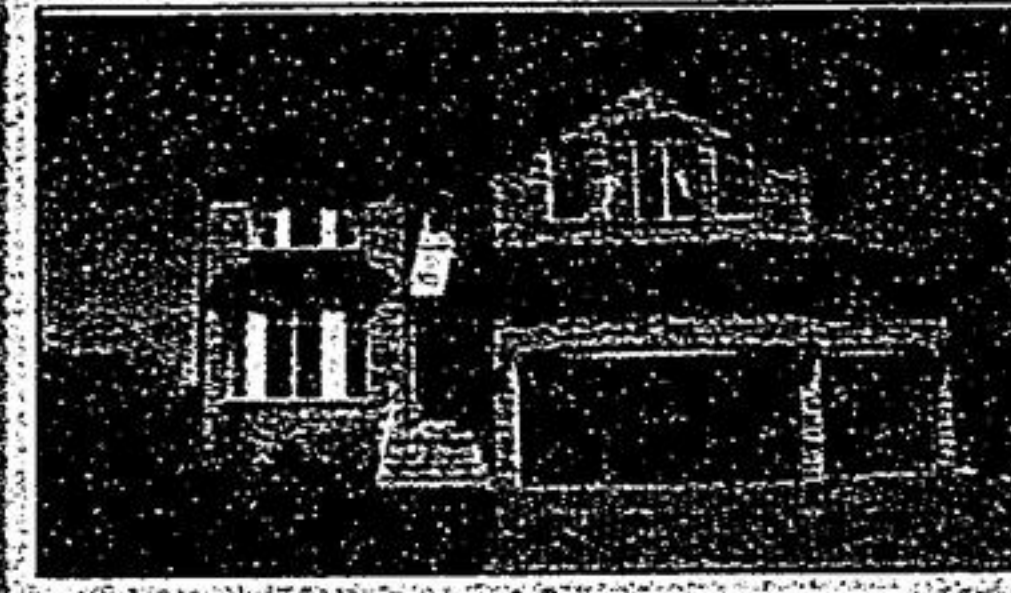
LOT 4 CAIRO CRT, STOUFFVILLE
 (BLOOMINGTON/10TH LINE)

Custom built country mansion by Chiavatti Homes, closing Aug 2007, approx 1.5 acres, unbelievable 2-storey, approx 3,580 sq. ft. of luxury, triple car garage, loaded w/upgrds, fantastic location, mins to Sleepy Hollow Golf Course, Main St Stouffville, GO Train & 404. **\$869,000**



LOT 5 CAIRO CRT, STOUFFVILLE
 (BLOOMINGTON/10TH LINE)

Custom built country mansion by Chiavatti Homes, closing Aug 2007, approx 1.75 acres, unbelievable 2-storey, approx 4,180 sq. ft. of luxury, triple car garage, loaded w/upgrds, fantastic location, mins to Sleepy Hollow Golf Course, Main St Stouffville, GO Train & 404. **\$939,000**



35 ODESSA CRESCENT

Backs ravine, approx 4178 sq. ft. of luxury, granite-foyer, 10' ceiling on main flr, pillars, hwd flrs, premium lot, double storey window-backs ravine. **\$1,188,000**



20 KATHERINE CRES., STOUFFVILLE

Gorgeous open concept one-of-a-kind bungalow, customized in sought after area, gourmet kit, approx \$100K spent on upgrds, main flr library - could be 2nd bdrm, prof landscaped, prof fin lwr lvl w/3 bdrms & bath. **\$599,000**



265 ENFIELD PLACE PH#06
 MISSISSAUGA

Walk to Square One, excellent location, close to Hwys 401 & 403, walk to all amenities. **\$188,500**



89 CHASSER DRIVE

1/4 acre property, Yorkwood; 3 yrs new, approx 3200 sq. ft., 17' ceiling dining rm, 9' ceiling on 1st flr, \$80K in upgrds, Brazilian cherrywood, 1st & 2nd flr library/office, front balcony, mins to 407, schools & buses. **\$619,900**



5629 LAKESHORE RD., STOUFFVILLE

Approx 2 acres, bungalow w/loft, finished bsmt, lots of upgrds, mins to lake/Hwy 48, million dollar subdivision nearby. **\$669,000**



10 HARTWOOD PLACE

Lovely family home, approx 2200 sq. ft., courtyard, oak flrs thru-out, 2nd flr library/great rm, also main flr family rm, close to all amenities. **\$409,800**



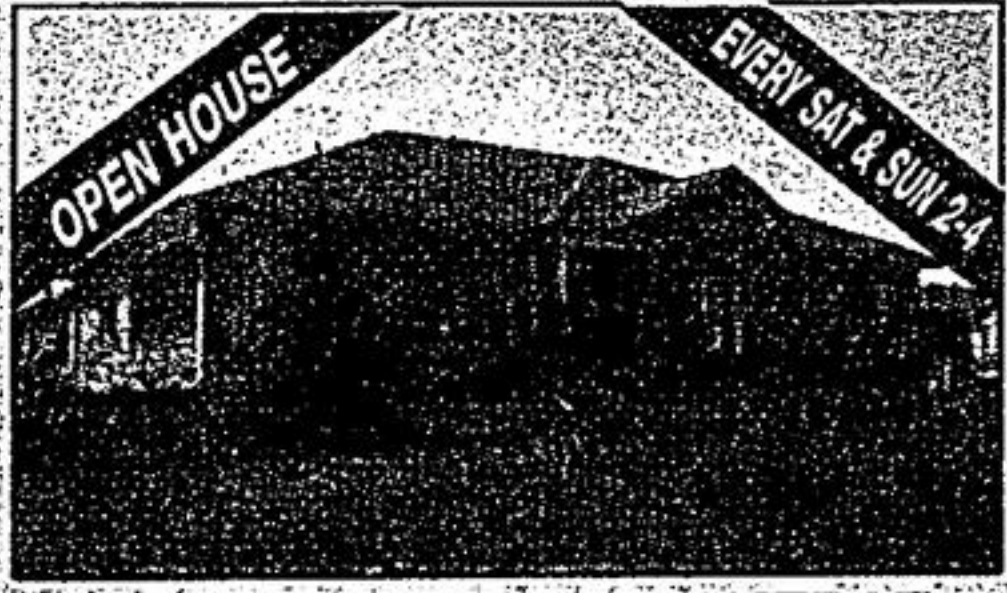
3 CHARING CROSS LANE

Attention 1st time Buyers- unbelievable townhome, hardwood flrs, approx 1,656 sq. ft., surrounded by detached homes, open concept, \$\$\$ spent on upgrds, mins to 407 to 404, walk to schools & buses. **\$329,000**



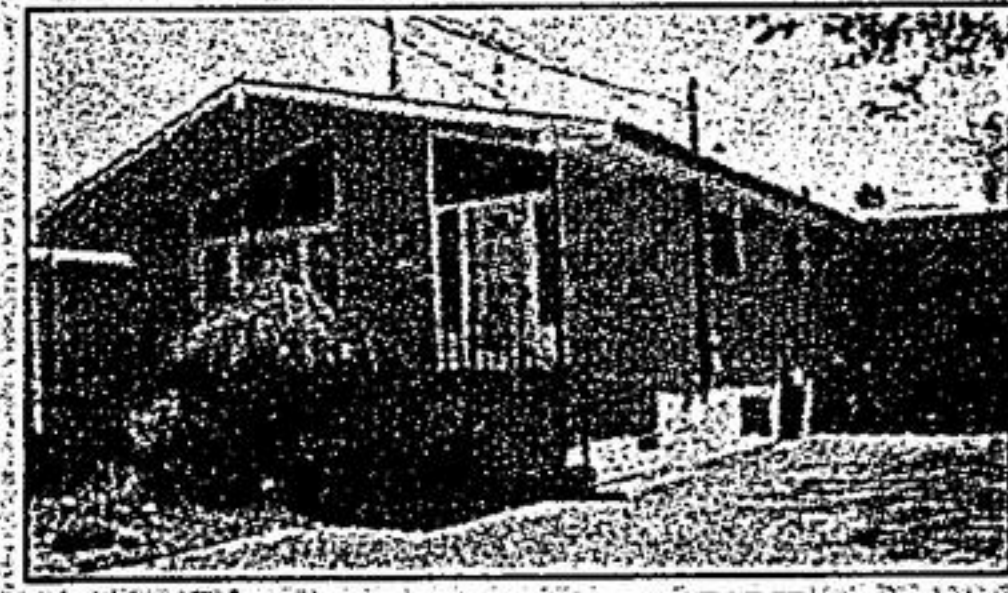
37 BRYANT ROAD

Very desirable area, approx 3000 sq. ft., 2 family rms - 1 on 2nd flr, apt in bsmt w/3 bdrms, bath & sep entry, lrg principal rms, lovely greenhouse kit w/sky-lights, prof landscaped. **\$479,000**



35 LONG STAN, BALLANTRAE

Ballantrae Golf & Country Club, frontage approx 100'75', the Grand Cypress model, 2065 sq. ft., approx \$50K spent in upgrds, prof fin'd lwr lvl w/rec rm, bdrm, office, 3pc bath, well treed lot. **\$549,900**



41 ROUGE STREET

Investor's delight, lot at back of home - can be severed, fabulous location off Hwy 48 just north of 407, gorgeous & totally reno'd bungalow w/2 bdrm-apt w/sep entry, buses to Roy H Crosby School, mins to 407 & Main St Markham. **\$668,800**



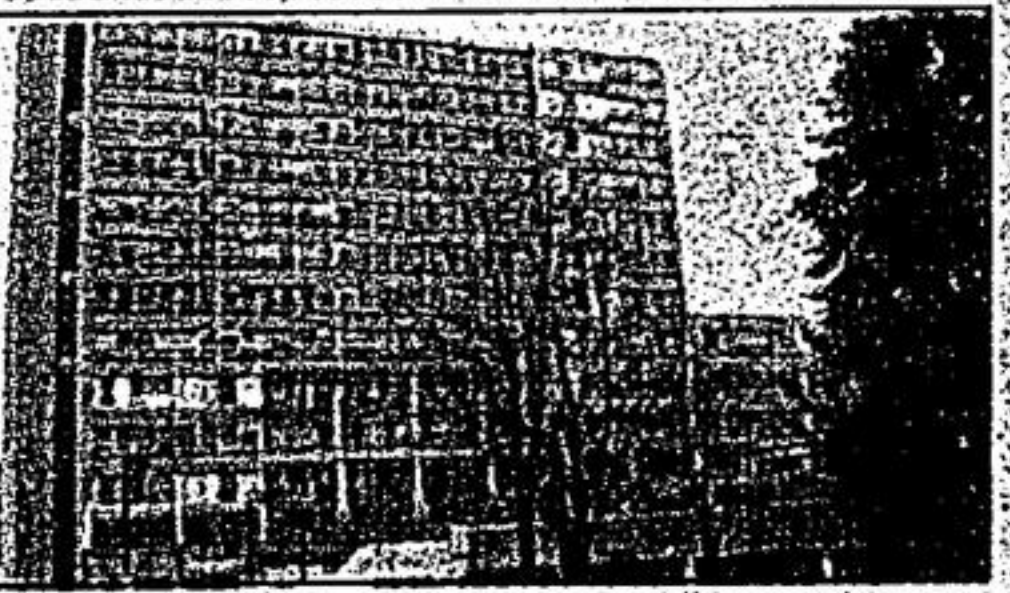
47 BRYANT ROAD

Custom built home, Markham Village, walk to 16th Ave & Hwy 48, huge kit w/island, fabulous master suite, prof finished lower level w/sauna, wet bar & bath, 2 wood-burning fireplaces, prof landscaped, walk to 3 schools & parks, child safe street, tastefully decorated. **\$539,800**



2645 KIPLING AVE #101, ETOBICOKE
 (FINCH & ALBION)

Lovely 2 bdrm unit on 1st flr, completely reno'd, freshly painted, upgrd bath, 1 pkg, fabulous location, walk to all amenities. **\$127,000**



5580 SHEPPARD AVE #410, TORONTO
 (MARKHAM & SHEPPARD)

Fantastic location, 6 suites per floor, great investment, 2 bedrooms, well kept condo. **\$105,000**



29969 HWY 48, PEPPERLAW

Attention all investors, fabulous investment property, right on Hwy 48 beside Quinns Marina, approx 24.74 acres, zoned agriculture, land & business for sale, trailer on property, owners retiring, close proximity to route of proposed 404 extension. **\$699,000**



82 LEGENDS WAY

Park Collection-1, end unit townhome, one-of-a-kind, absolutely amazing, \$\$\$ spent on upgrds, approx 2661 sq ft, new custom kit w/granite, solid oak strcs, balc off master & kit, marble & stone gas FP, hwd & granite flrs, mins 404, 407, shop, schools. **\$658,800**



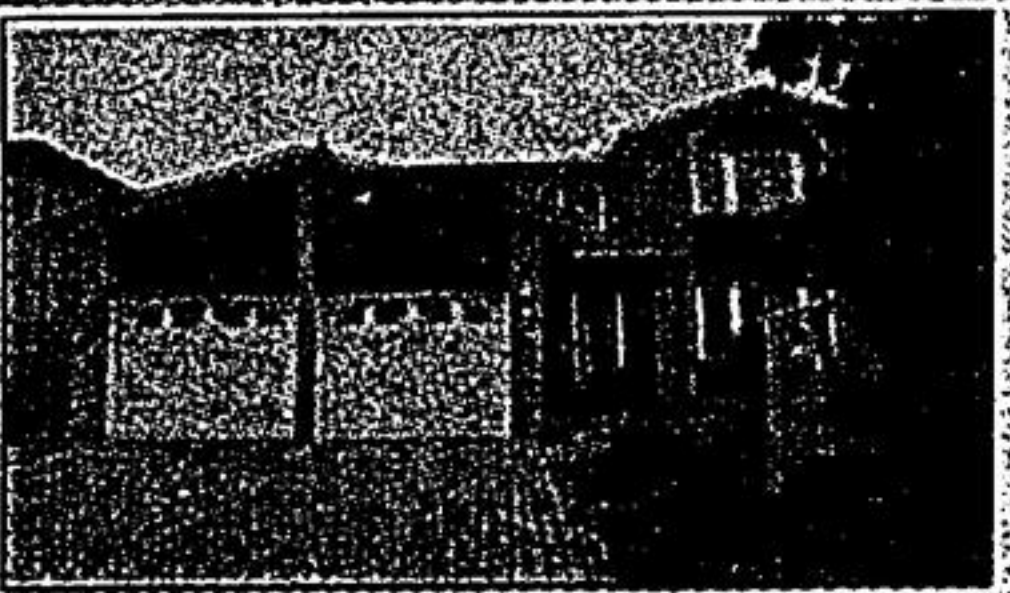
7 RYAN CRESCENT

Jennings Gate, approx 1 acre, multi-million dollar neighbours, w/circular driveway, fabulous grand entrance, solarium overlooking private garden, prof finished open concept walk-out bsmt w/rec rm & bdrm. **\$935,000**



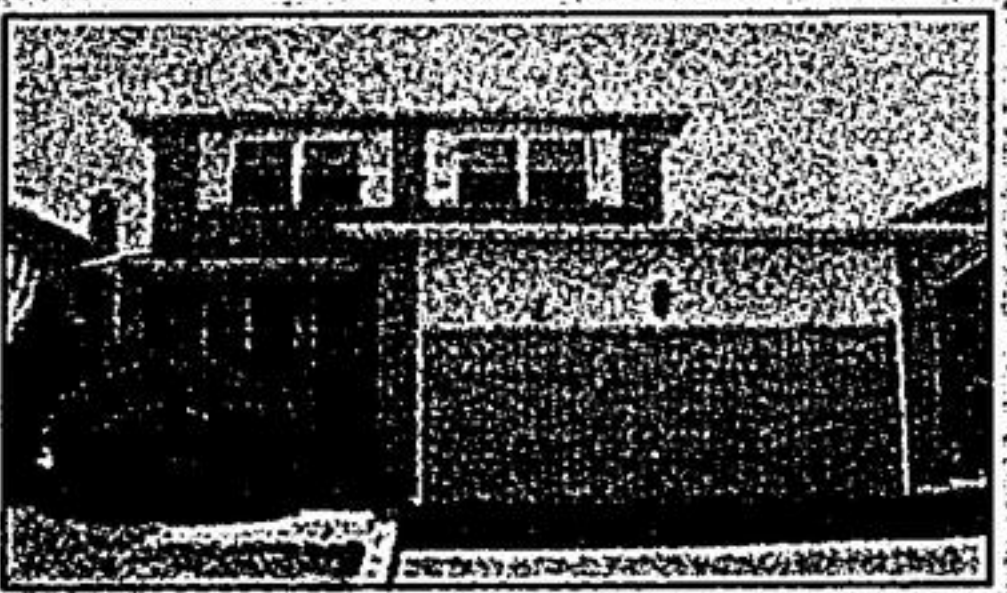
176 MAIN ST., UNIONVILLE - QUEEN'S PANTRY

Great opportunity for the right person, family business, established in 1981 on historic Main St. Unionville, major presence on street, shop has wide scope of retail merchandise, 2,000 sq. ft. of retail space, 3 year option for lease. **\$295,000**



55 FINCHAM AVENUE

Custom built, thousands spent on upgrds, 2 fireplaces, amazing upgrd kit, oak & parquet thru-out, prof fin lwr lvl w/wet bar, fab double storey foyer, solid oak staircase, prof landscaped. **\$445,800**



5 BURWELL CRESCENT

Raymerville area, 4 bdrms, great layout, fireplace in living rm, huge deck, walk to Main St Markham, schools & parks, mins to 407. **\$345,000**



CARLTON ROAD

Walk to Historic Main St Unionville, bungalow w/loft, unbelievable home, over \$200,000 in upgrds, prof finished lower level, all the bells & whistles. **\$799,000**



Backs to forest with covered patio, \$150K in upgrds, 2 fireplaces, prof finished lwr lvl w/wet bar, huge ofc & gorgeous bath, cold room, unbelievable kitcgen w/granite counters, walk to Markville Mall, mins to 407.



Unbelievable, shows like a model home, approx 3400 sq. ft. of luxury, 9' ceilings, FP in LR, marble entrance, note: 5 bdrms, open concept kit & fam rm, prof finished lower level, prof landscaped, wlk to historic Main St Unionville, Library, Art Gallery & Toogood Pond.



End unit, brand new, approx 2250 sq. ft. of luxury in European inspired Cathedral Town, 5 new appliances.



Attention 1st time buyers, fab location, S. end of Aurora, lovely mature area, gorgeous reno'd semi bung, newer kit, hwd flrs thru-out, newly landscaped, potential in-law apt w/sep ent, wlk to Yonge, schls, shopping, buses, 5 minutes to 404.



Raymerville area, new kit, fabulous master ensuite w/jacuzzi, prof finished lower lvl w/3-pc bath, rec rm & wet bar, walk to all amenities, mins to 407 & 404.



Fabulous raised-bungalow in the heart of Markham, totally reno'd, lovely lot, \$\$\$ spent on upgrds, prof finished lower level w/walk-out, walk to Roy H. Crosby School & Hwy 7, mins to Markville Mall & 407.



Pab huge lot on the outskirts of town, .74 ac, unbelievable bung, \$\$\$ spent on upgrds, all brick det w/shop at rear, English Cty grdn w/320 cedars, upgrd kit, cath chng in FR of lrg IC pool & cabana, master ens w/jacuzzi, oak flrs, slate, prof fin L/L w/gas FP & 3pc wshrm, mins to Hwy 48.