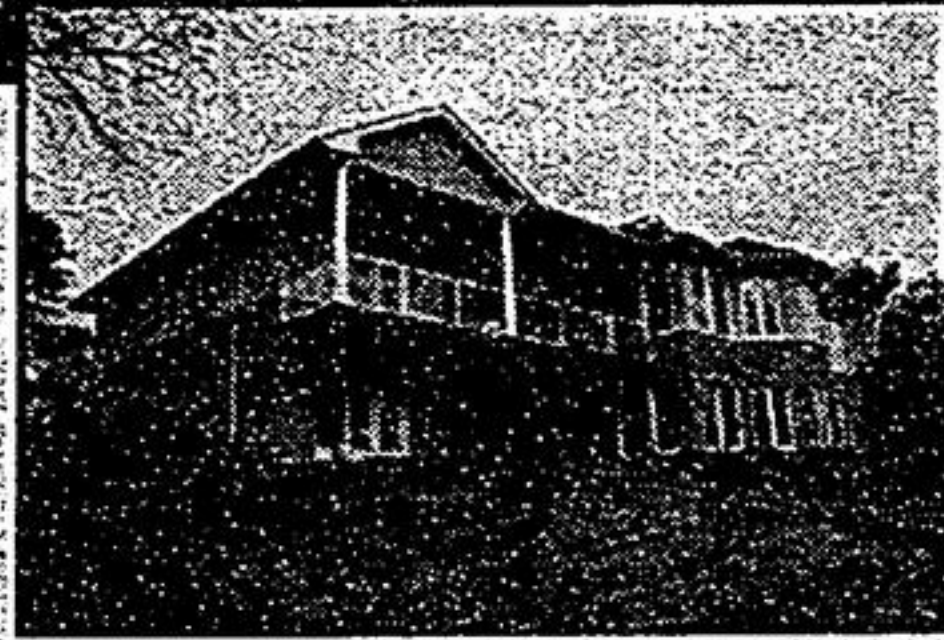


OPEN HOUSE: EVERY SAT. & SUN. 2-5 PM
4319 VIVIAN RD., STOUFFVILLE



VIVIAN FOREST

New bungalow beauty backing on to conservation forest. 3,000 sq. ft. on 2 acres, 10 ft. ceilings, crown mouldings, hardwood throughout, ceramics, pot lights, walkout basement and much more. Direct from builder. Custom maple kitchen with granite countertop. Call the builder.



Lillina Family Construction Ltd.
 647-333-0977

"Questions To Ask When Interviewing An Agent To Sell"

Copyright 2006

See it on website under Articles

www.GoodRealEstateAgents.com

... according to their clients **23 YEARS** Track Record!



ALEC LEUNG

Broker of Record
 B.Comm (Hons.)
GRE Realty Inc.
 Brokerage

905-948-8590
 email: grearealty@bellnet.ca

He outperformed the rest in a short period of time. For this reason, I am confident to recommend Alec to anyone who may consider selling and is unable to decide on whom to list with. Alec is number one for many reasons.

Tony Panacci

Alec did according to our wishes and expectations, and the house was sold in one week, at the price we wanted. We shall recommend him to people we know.

Carmelo & Anna Morra

Alec made it happen! We witnessed as Alec got us \$20,000 more than the previous agent.

Mj Hue Chau

This is to thank you for the professional and courteous manner in which you enabled our house to be sold. We had complete faith and trust in you, and you did not let us down.

Jasbir Matharu

Alec had nothing but our best interests in mind at all time and acted and advised us accordingly. As a result, we received one hundred percent of our asking price!

Jim & Jennifer Fona

We highly recommend him for his professional and courteous service. Alec is an amicable person, his friendly service has been a wonderful experience for us.

Peter & Camela Carbons

STORE OR OFFICE SPACE IN PLAZA UNITS 7 & 11



\$10 Net Lease

Excellent opportunity in one of Sutton's busiest business/retail plazas. Approx. 1300 sq. ft. of store space/office space on popular strip on Dalton Rd. Plaza includes Subway, KFC restaurant, Dollar Store and Gym, etc. Call Yadira Rotscholl, Sales Representative, Ext. 1583 for more details.



YADIRA ROTSCHELL*
 905-476-9543
 1-866-880-6572
 www.timelessrealty.ca

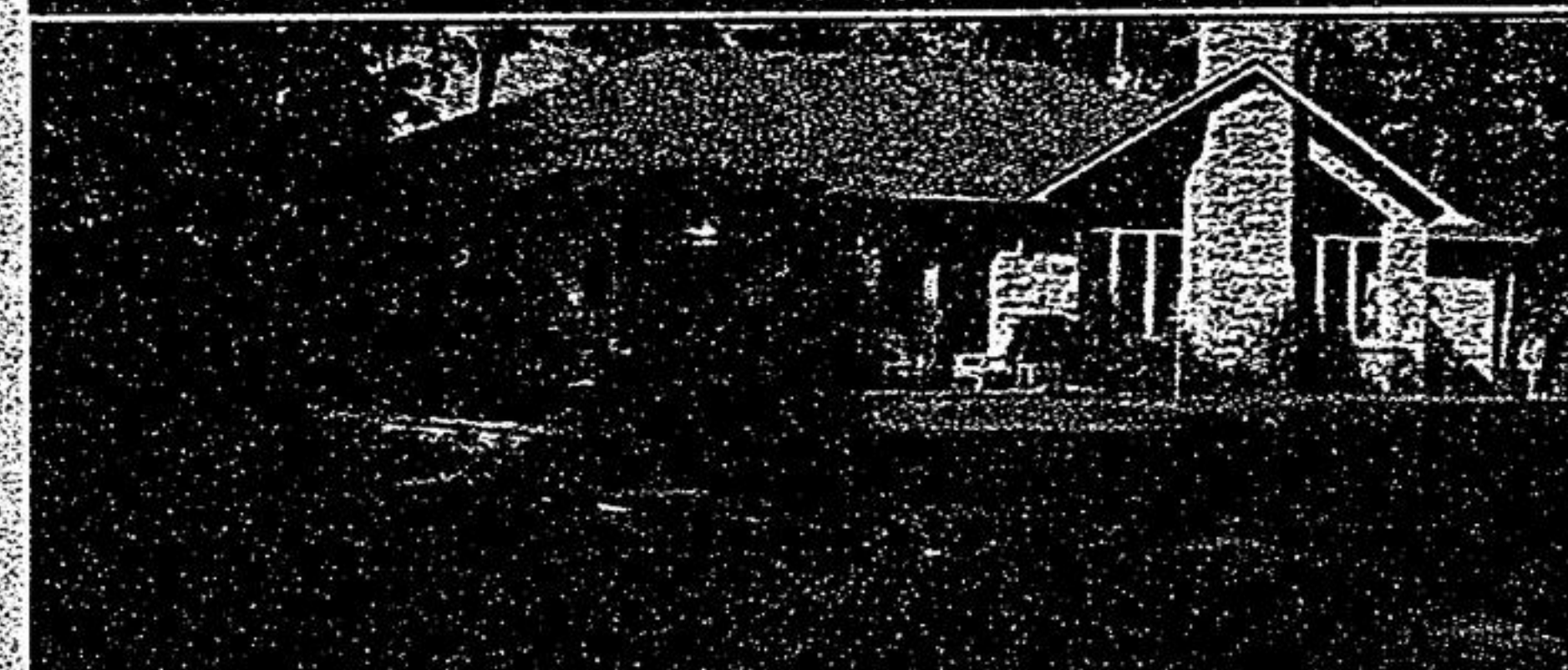


DIANE DEPASS**
 (905) 727-3154
 (416) 213-7209
 dianedepass@rogers.blackberry.net



Your Community Realty Brokerage
 Independently Owned & Operated

WHIT/STOUFFVILLE... RARE BEAUTY ON 7 ACS.



Gorgeous bungalow on 7 acre site beside 150 acres of protected Oak Ridges Moraine. Open concept w/itr. to ceiling stone trpl. in great rm. gourmet kit., ext. use of hwd. & crown moldgs., vaulted ceilings, fin. w/o bsmt., beautiful 1/2 pool w/waterfall. Many more upgrds. Won't last.

\$999,900



Vince Ciano
 RBC Mobile
 Mortgage Specialist
 Mob 416.707.3512
 Tel 905.471.8762
 vince.ciano@rbc.com

GET THE MORTGAGE THAT WORKS BEST FOR YOU!

Competitive Rates

Purchases, Refinances, Home Equity, Renewals,
 Pre-Approvals, New Construction,
 Investment Properties and Vacation Homes.

*Before you finalize the deal...
 Call your RBC Mortgage Specialist Today!*



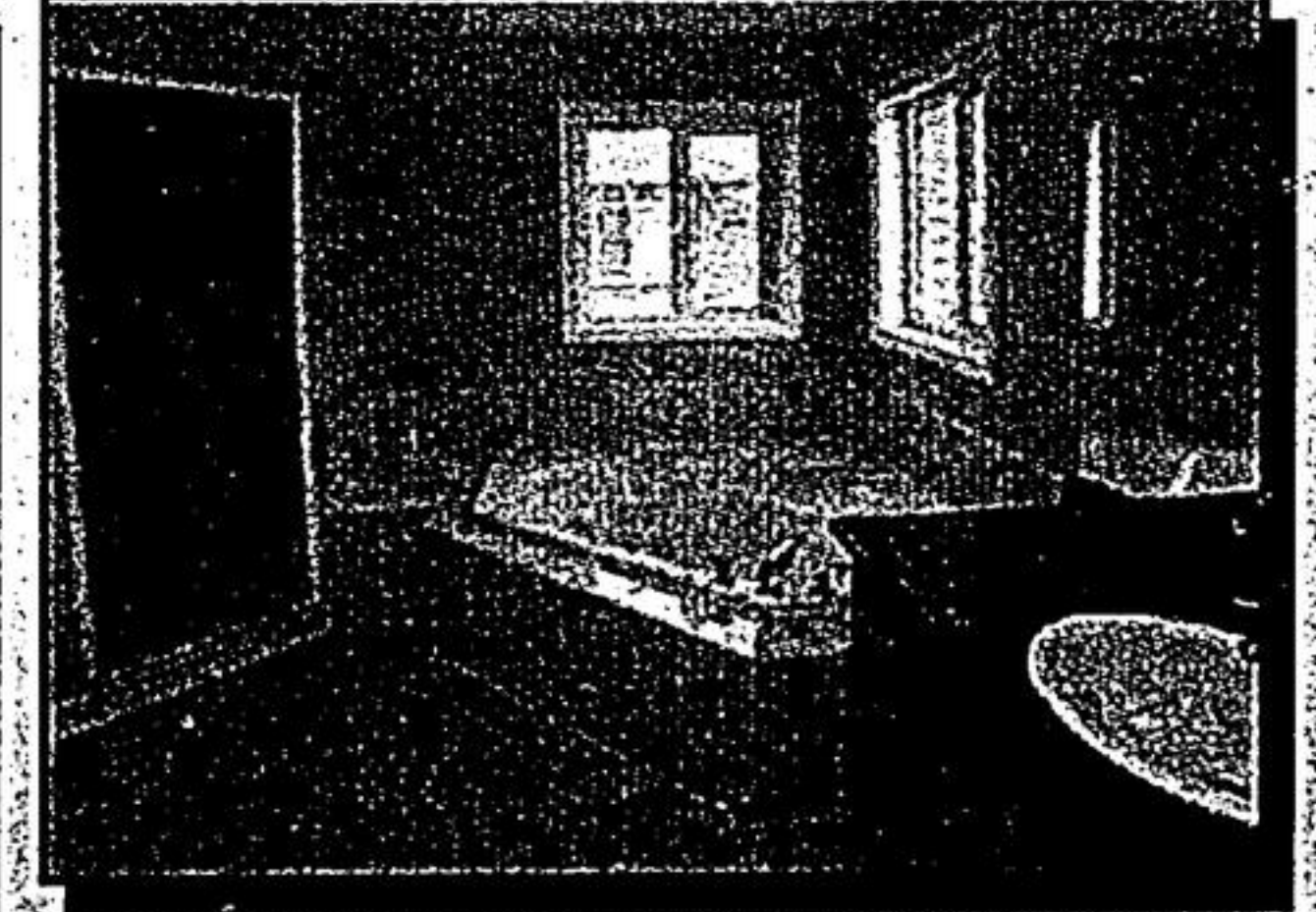
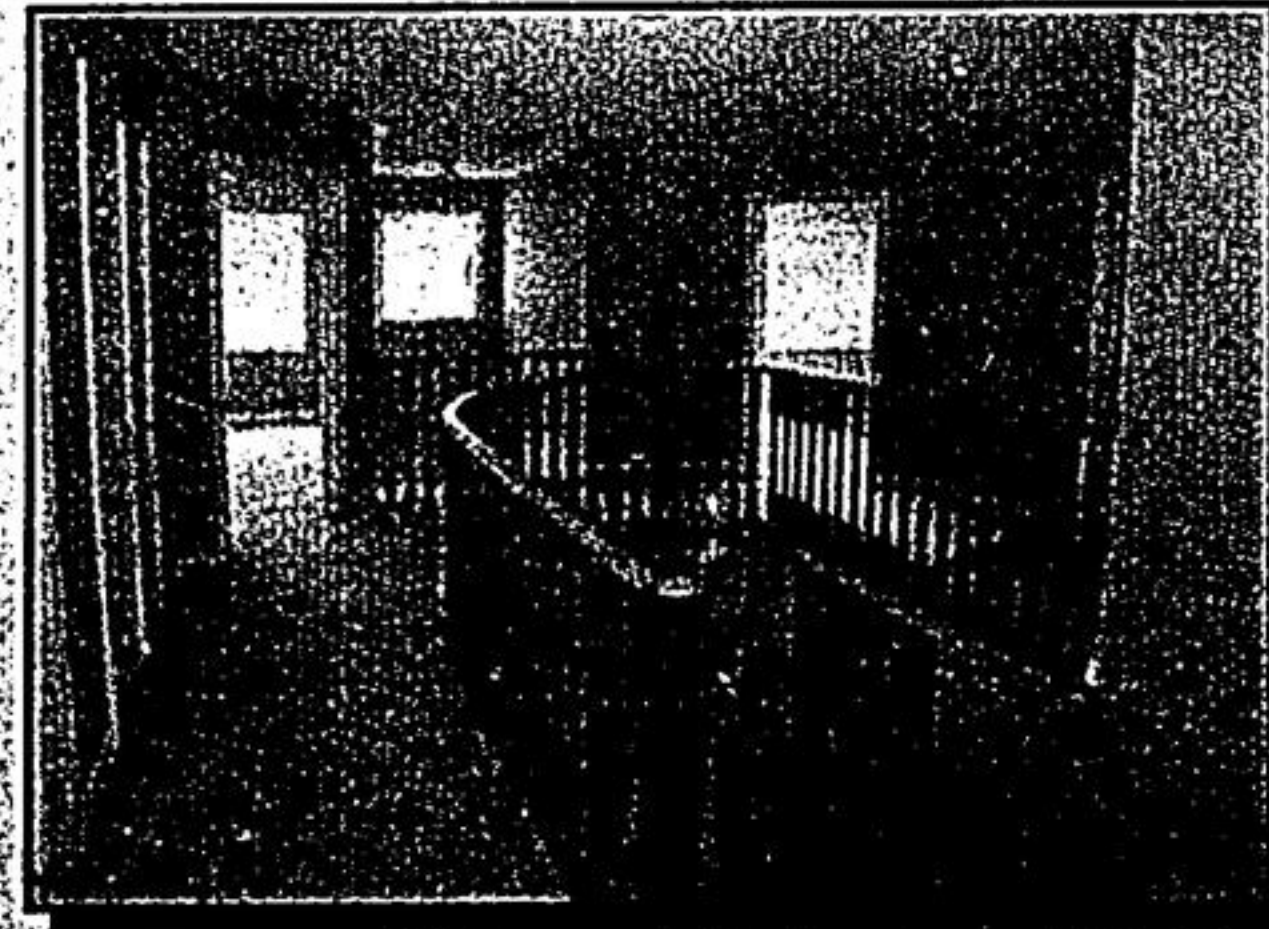
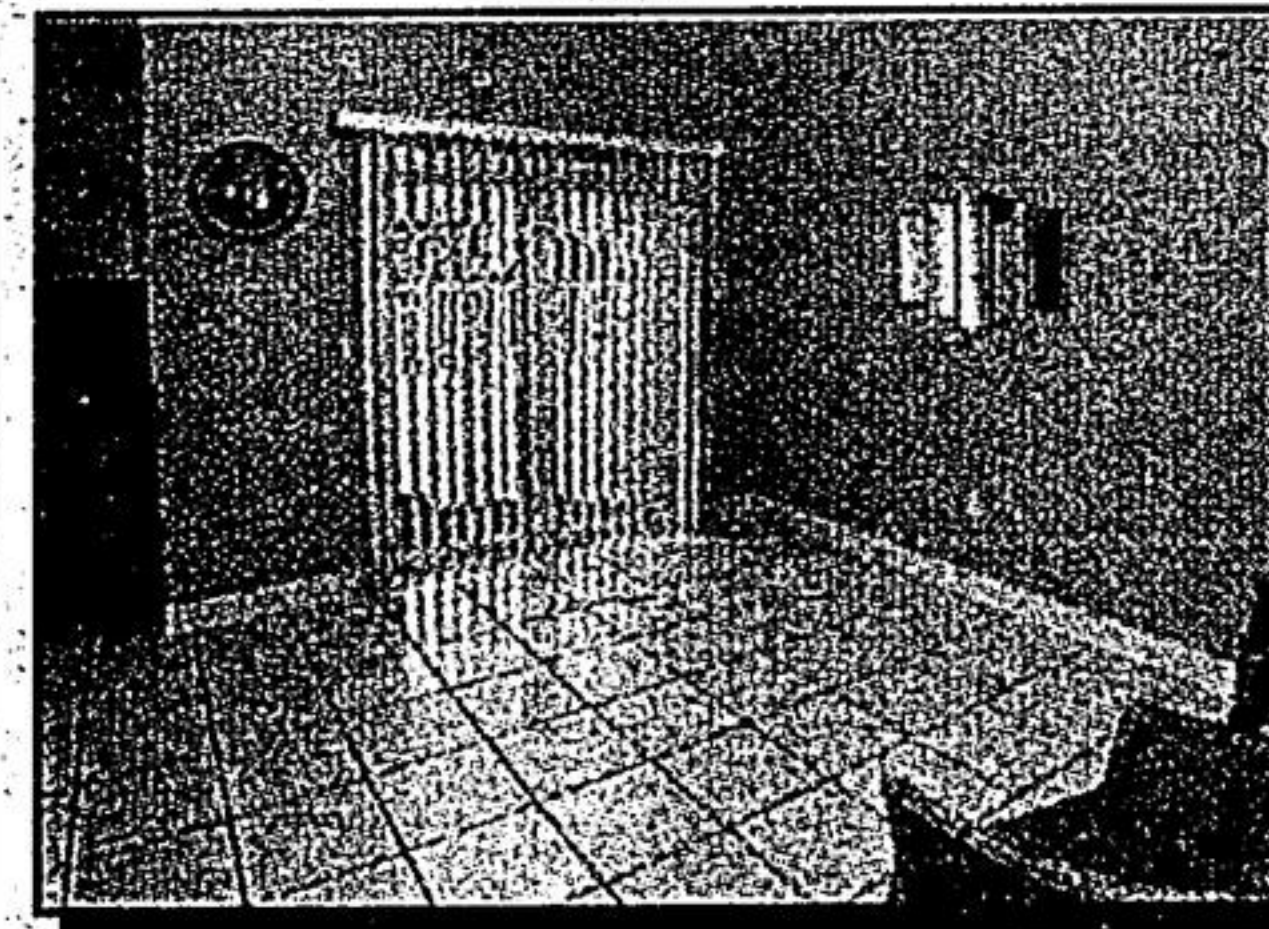
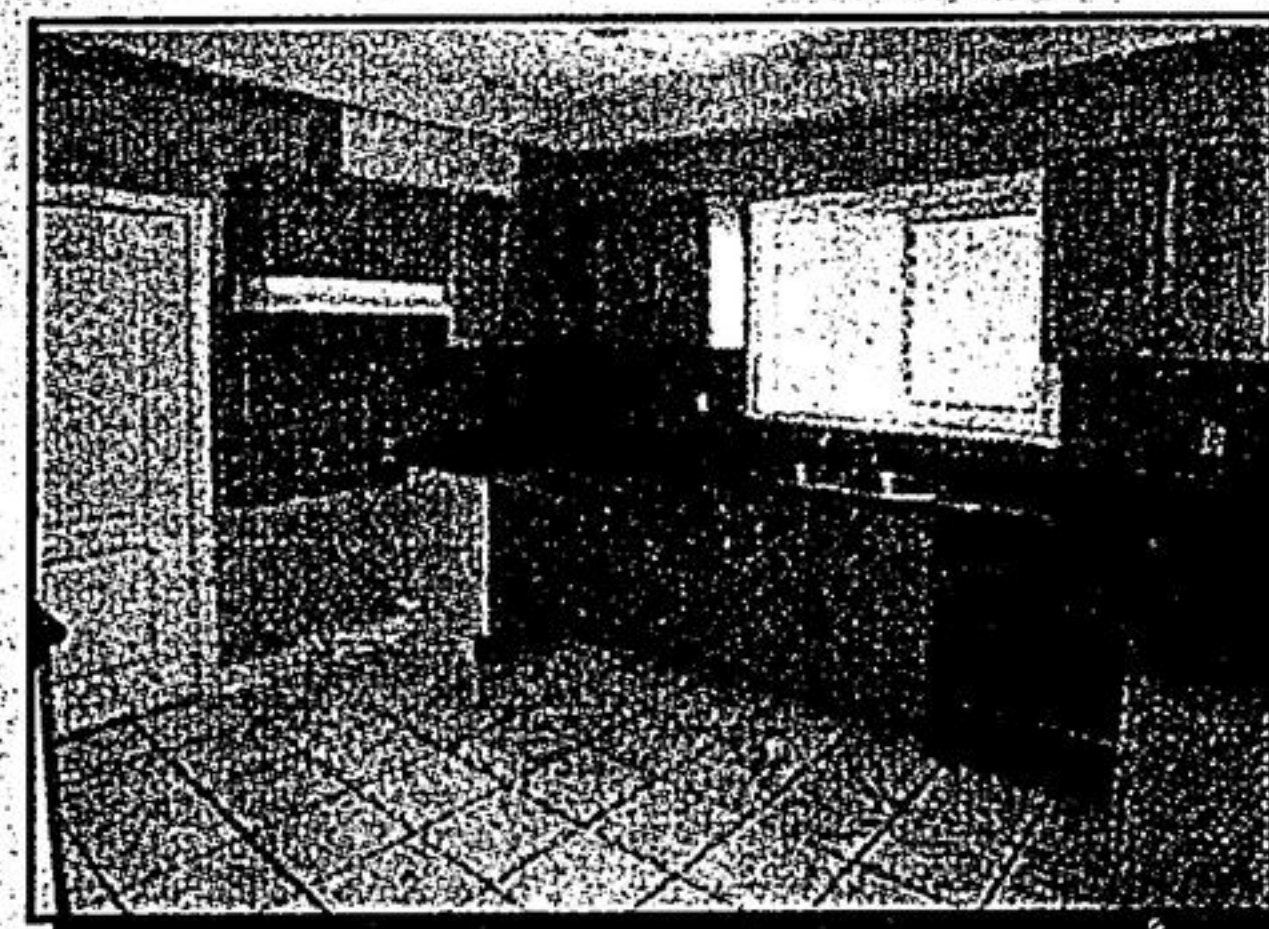
Grace Petronaci
 RBC Mobile
 Mortgage Specialist
 Mob 416.575.8888
 Tel 905.294.2324
 grace.petronaci@rbc.com

FIRST > FOR YOU



ROYAL LEPAGE
 YOUR COMMUNITY REALTY
 BROKERAGE
 Independently Owned & Operated

Welcome to 10 Darrington Drive, Markham



"FEATURE HOME OF THE WEEK!"

This is the most affordable detached home with double car garage in gorgeous Greensborough community. The home is approximately three years new. It has 9-foot ceiling, newly installed hardwood floors and is freshly painted. Thanks to the excellent floor plan, this home has four spacious bedrooms where master bedroom offers four piece ensuite and walk-in closet. Kitchen comes with breakfast area and walk out to the fully fenced back yard. You and your family can relax on the front verandah, overlooking the landscaping and your friendly neighbourhood. Extras include central air conditioning, all electric lighting fixtures and dishwasher. Walking distance to Parks, pond and shops. Excellent schools. Close to major highways and GO station. This is a must see.



Keith Wong
 Sales Representative

Call **KEITH WONG** 905-940-4180 www.markhamfinehomes.com