



# JEEP DAYS



## NEW 2007 JEEP COMPASS FWD

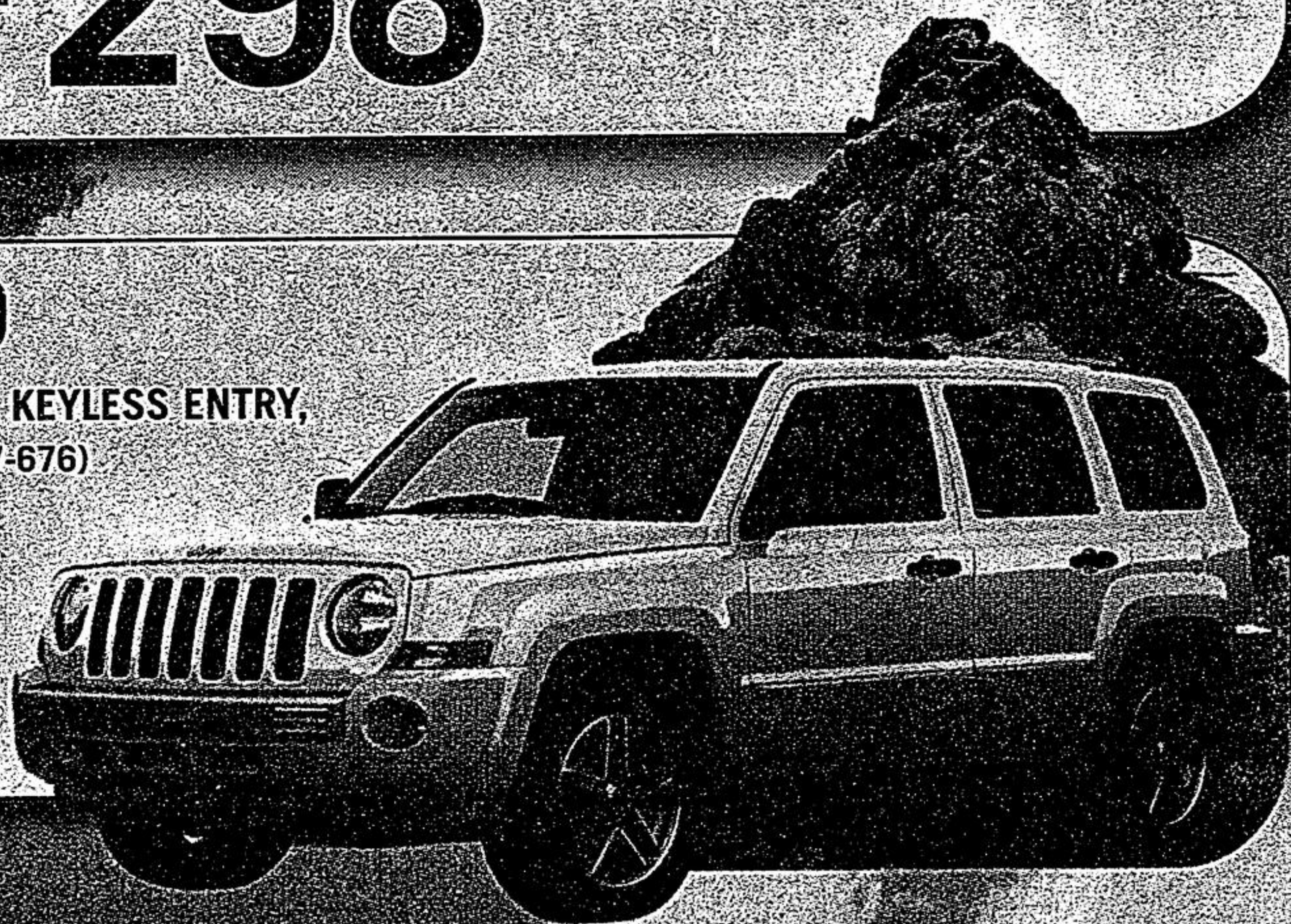
2.4L 4 CYL, CVT AUTOMATIC, A/C, CD PLAYER, FLOOR MATS, SUNSCREEN GLASS AND MUCH MORE (ST 27-237)

**\$298/MTH** +TAXES  
48 MONTH LEASE

## NEW 2007 JEEP PATRIOT FWD

2.4L 4 CYL, CVT AUTOMATIC, A/C, PWR WINDOWS, LOCKS, MIRRORS, KEYLESS ENTRY, CD PLAYER, FLOOR MATS, SUNSCREEN GLASS, AND MUCH MORE (ST#27-676)

**\$316/MTH** +TAXES  
48 MONTH LEASE



## NEW 2007 JEEP WRANGLER X 4x4

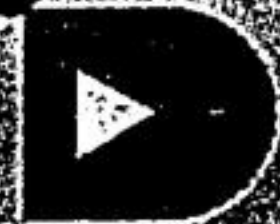
3.8L V6, 6 SPEED MANUAL, A/C, TUBULAR SIDE STEPS, JEEP FREEDOM TOP, 17X7.5 ALUMINUM WHLS, DUAL TOPS AND MUCH MORE (ST 27-157)

**\$396/MTH** +TAXES  
36 MONTH LEASE



All leases include 20,400 kms/year (excess 15 cents), with Freight (\$1200 patriot/compass, \$1300 wrangler) a/c tax \$100, fuel tax (\$75 patriot/compass, \$400 wrangler), admin upfront. Plus 1st mth payment. APR for Compass 5.9%, Patriot 5.9% and Wrangler 7.85%. OAC with Chrysler Financial Canada. See dealer for details.

✓ online



[www.woodbinechrysler.ca](http://www.woodbinechrysler.ca)

**COME TO WOODBINE CHRYSLER & SAVE YOUR MONEY!!**

'03 JEEP LIBERTY LTD	'06 JEEP GR CHEROKEE LARADO	'07 DODGE CHARGER SXT AWD	'07 COMMANDER	'07 CALIBER	'05 DODGE GRAND CARAVAN SXT
3.7L V6, 4X4, ALLOY WHEELS AND ALL POWER OPTION, WITH 62,000 KM.	4.7L V8 4X4 ALL POWER OPTION, WITH 30,000 KM.	FULLY LOADED, REAR SPOILER, WITH 16,500 KM.	5.7L V8, 4X4, SUNROOF, NAVIGATION, DVD PLAYER, BACKUP SENSOR AND MUCH MORE.	1.8L, DEEP TINTED GLASS, GREAT GAS MILEAGE, WITH 33,700 KM.	STOW N' GO, ALL POWER OPTION, WITH 64,000 KM.
<b>\$16,995</b>	<b>\$25,995</b>	<b>\$31,995</b>	<b>\$45,888</b>	<b>\$14,995</b>	<b>\$18,995</b>
					

\* All sale prices are plus taxes, freight, license, admin & registration. \*\*See dealer for details.

# WOODBINE CHRYSLER



**8280 WOODBINE AVE. MARKHAM**

(SOUTH OF HWY#7, WEST SIDE, ACROSS FROM COSTCO)

**905-415-2260**

[www.woodbinechrysler.ca](http://www.woodbinechrysler.ca)

