

Big Bike on streets today

You can support The Heart and Stroke Foundation by riding an outlandishly large bike in Stouffville today.

The Big Bike Ride takes place from 4 to 7 p.m. The ride begins and ends at Shoeless Joe's and teams will take turns around Stouffville in half-hour time slots.

There are 28 people to a

bike.

The entry fee is a \$50 donation with all funds going to the Heart and Stroke Foundation.

If you would like to be part of this event, contact the Whitchurch-Stouffville Chamber of Commerce at 905-642-4227 or chamber@whitchurchstouffville.ca



Women's Shelter of Georgina

Free, confidential emergency services and support for abused women and their children in York Region

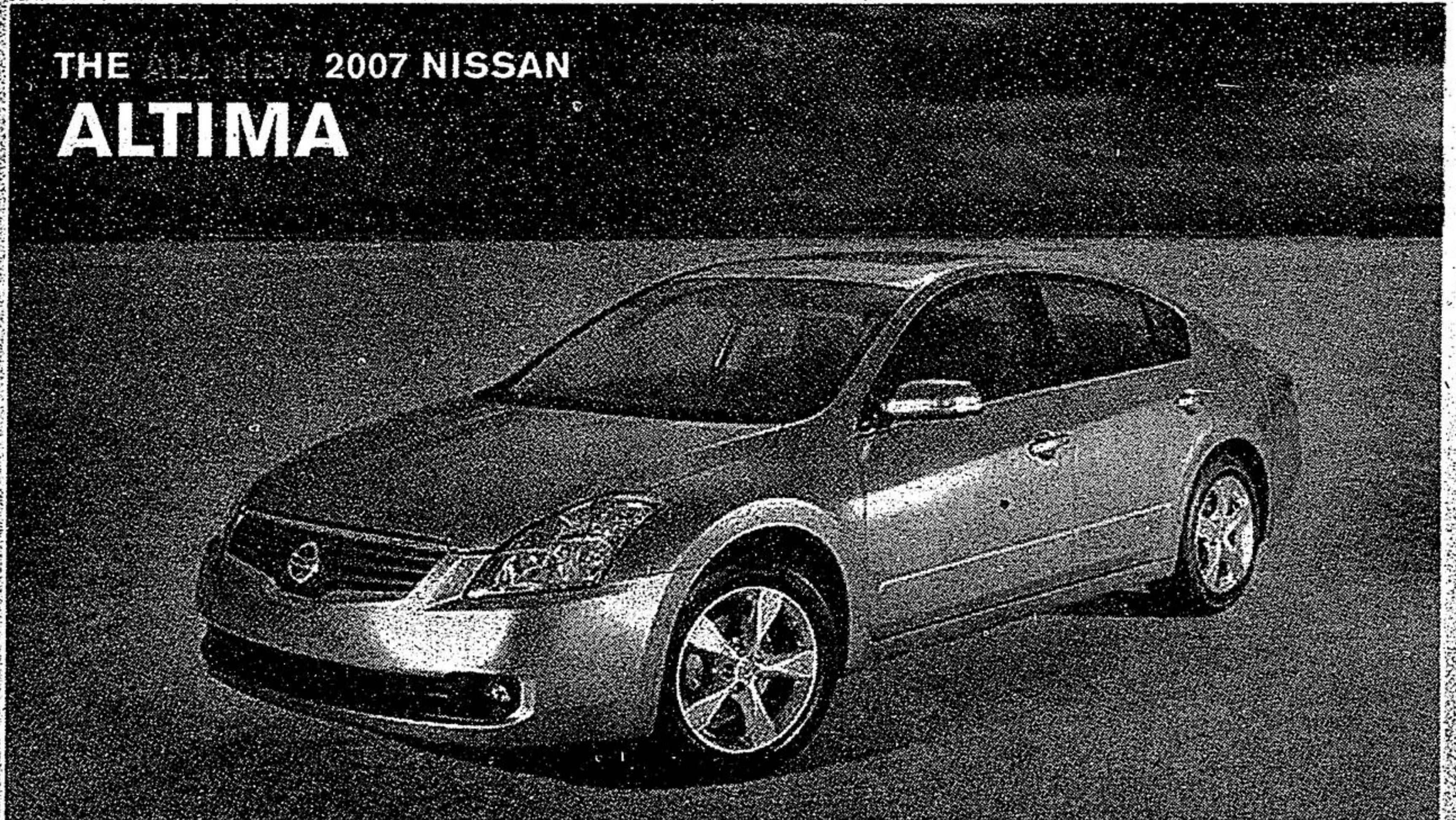
Call 24 hours a day
1-800-661-8294 or 905-722-3220



This message brought to you as a community service of The Markham Economist & Sun

AT VILLAGE NISSAN Get a...GREAT DEAL! Save a...GREAT DEAL!!

THE 2007 NISSAN
ALTIMA



2.5L 175hp, 4cyl, 6 spd trans, 4 wheel disc brakes, ABS disc brakes, intelligent key, 16" all season tires, tilt & telescopic steering column, AM/FM/CD, 6 speakers, keyless entry, Nissan advanced airbag system, anti-theft system, push button ignition, Halogen headlights, power outside mirrors.

SALE PRICE

\$22,998

THE 2007 NISSAN
QUEST

3.5L 235hp, traction control, ABS brakes, 16" all season tires, heated mirrors, 7 passenger, front & rear A/C, PW, PL, keyless entry, vehicle info system, grocery bag hooks, Nissan advanced airbag system, anti-theft system and more.

SALE PRICE **\$27,998**



THE 2007 NISSAN
MURANO SL

AWD, 2.5L 240hp 6 cyl, CVT trans, ABS brakes, 18" alloy wheels, fog lights, Bose audio system 225 watts, dual zone air conditioning, rearview camera, Nissan advanced airbag system, power group, anti-theft system and more.

LEASE FOR **\$399** /mth



All prices are plus frt. & PDI. Leases are based on 24,000 kms per year. Excess km charge at 0.10¢. Cash or trade down payment required on leases. Quest V6RG77 AA00 & Murano L6TG17 AJ00 (Stk. #71180) Quest requires \$5000 and the Murano \$3300 plus taxes. Altima T4RG57 AA00. See us for details.

Durham Steam Cleaning
642-5111
852-6711
LOOSE RUGS
BROADLOOM
UPHOLSTERY
3M Scotchguard

MARKVILLE'S GREAT TENT EVENT ON NOW!

0% FINANCING AVAILABLE
RECEIVE A
\$500 GAS CARD
WITH EVERY PURCHASE OR LEASE!

Markville 5336 Hwy #7 Markham
CHEVROLET • CORVETTE INC. 905-294-1440

Attention Businesses!

Check out your free listing on yorkregion.com!

In order to maintain York Region's best online business directory, please let us know the details of your new business, or if you've moved!



Who will be

Whitchurch-Stouffville's

Citizen of the Year?

Know an outstanding resident that gives of their time to make our community a better place?

Tell The Sun-Tribune why they should be honoured.

Supporting material and testimonials appreciated.

Label nominations "Citizen of Year" and mail to: Box 154, Stouffville, L4A 7Z5 or e-mail: stouffvilleawards@yrmg.com by June 17 at noon.

Award to be presented during Strawberry Festival, June 27 to July 1.



VILLAGE NISSAN

4600 Hwy. 7, Markham (905) 477-3337

www.villagenissan.com

