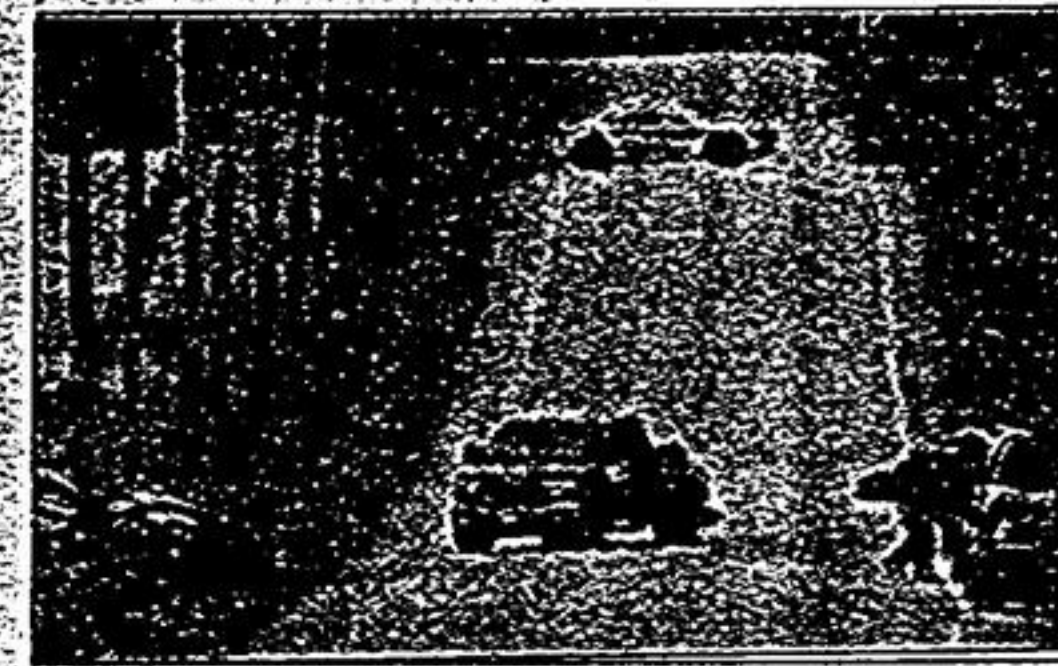


# Stouffville Sun-Tribune

THURSDAY, JUNE 7, 2007 ■ SERVING THE COMMUNITY OF WHITCHURCH-STOUFFVILLE ■ 32 PAGES/\$1 INCLUDING GST



**8** Markham man, 27, dies in Stouffville road collision

Opinion ..... 6  
 Calendar ..... 20  
 Sports ..... 22  
 Classified ..... 23

## Bannon wins Tory vote

Late entry prepares for Oct. 10 election

BY JOAN RANSBERRY  
 Staff Writer

The early bird doesn't always get the worm, the winner of the Oak Ridges-Markham provincial Conservative race proved Saturday.

Even though Phil Bannon entered the four-way Tory race less than three weeks ago, he was swept to victory on the second ballot.

The 55-year-old deputy mayor of Whitchurch-Stouffville beat former mayor Sue Sherban and Markham residents Gayani Weerasinghe and D'Arcy Pigott. The others had been in the contest for up to three months.

Mr. Pigott dropped off the ballot after the first votes were counted, sending many of his supporters to Mr. Bannon.

The nomination meeting, held at Markham's Brother Andre Catholic High School, attracted more than 1,000 card-carrying Conservatives.

"I entered the race very late," Mr. Bannon told the cheering crowd. "Now, we must work hard if we're going to take this riding."

Mr. Bannon is being challenged by Liberal Dr. Jaczek,

See GUN, page 15.

AFTER 53 YEARS, SDSS ALUMNI, STAFF WAX NOSTALGIA AT OFFICIAL CLOSING

## Fond farewell to the old school

The official opening of Stouffville District High School occurred Nov. 26, 1954.

I was there.

The official closing of Stouffville District Secondary School occurred June 1, 2007.

I was there.

Time bridging these two important events spans 53 years.

Total cost of the building, then addressed as Edward Street, was \$400,000. The student enrollment was 211. There were nine



Jim Thomas

teachers on staff. For a few nostalgic hours,

Friday, the hands of time around in reverse as millions of memories flooded back. For some, it was a celebration. For others, an appreciation. For still others, a violation. Whatever the reaction, one thing was certain: time and tide had taken its toll.

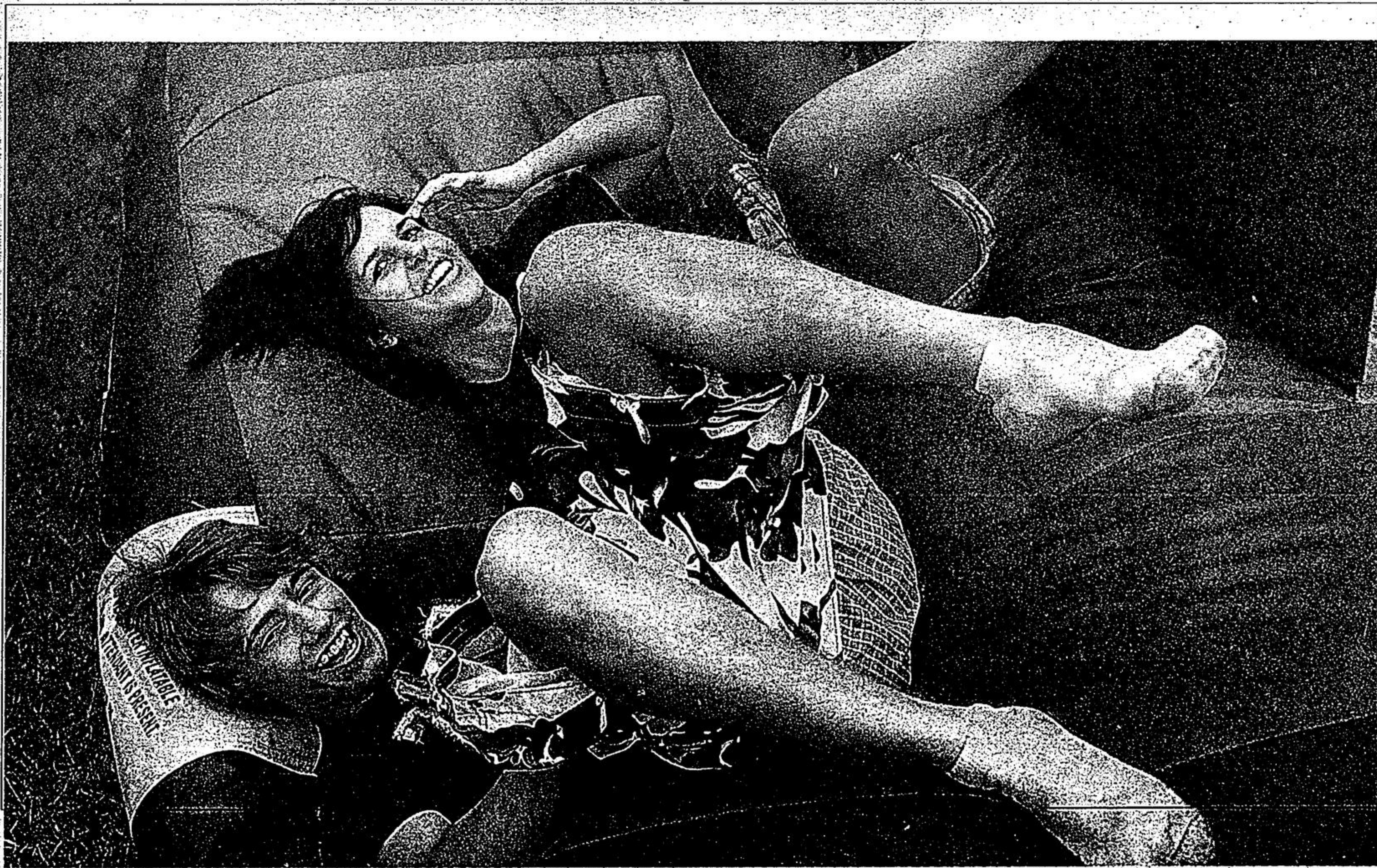
A new SDSS will open its doors in September on Weldon Road, south of Main Street.

While the future remains unwritten and the past is all but history, let it be known the

original structure, soon to be discarded, was the result of an unwavering stand by a board that demanded Stouffville have its own secondary school rather than share a larger, more centrally located edifice with Markham. Local trustees, to their credit, eventually proved their point.

Previously, the upper floor of Summitview School had served

See TEACHERS, page 5.



Stouffville District Secondary School Grade 10 students Kyle Sharpe and Allana Kerr take a tumble during games at Stouffville Palooza, the school's closing celebrations, Friday. For additional photographs, see page 3.

STAFF PHOTO/SJOERD WITTEVEEN

**410 AUTO**  
 SPECIALIZING IN  
 Volkswagen • Audi  
 Porsche • European  
 Asian & Hybrid  
 138 Sandford Dr., Unit 5  
 905-642-2886  
 1-877-410-AUTO  
 www.410auto.ca

HOME OF THE FAMOUS VEAL SANDWICH

**PASTAGGIO PANINI**

RE-OPENING FRIDAY, JUNE 8TH  
 BUT BIGGER & BETTER

OPEN 7 DAYS  
 11-8 PM

18 RINGWOOD DRIVE, #7 STOUFFVILLE • 905-642-5617

FOREVER 10  
 THE WORLD'S MOST  
 BRILLIANT DIAMOND

**Barthau Jewellers**  
 Because You Deserve

6312 Main St.  
 Stouffville  
 905-640-4646