

Home Renovations, Decor, Furnishing...



## If you neglect the preparation, problems will surface

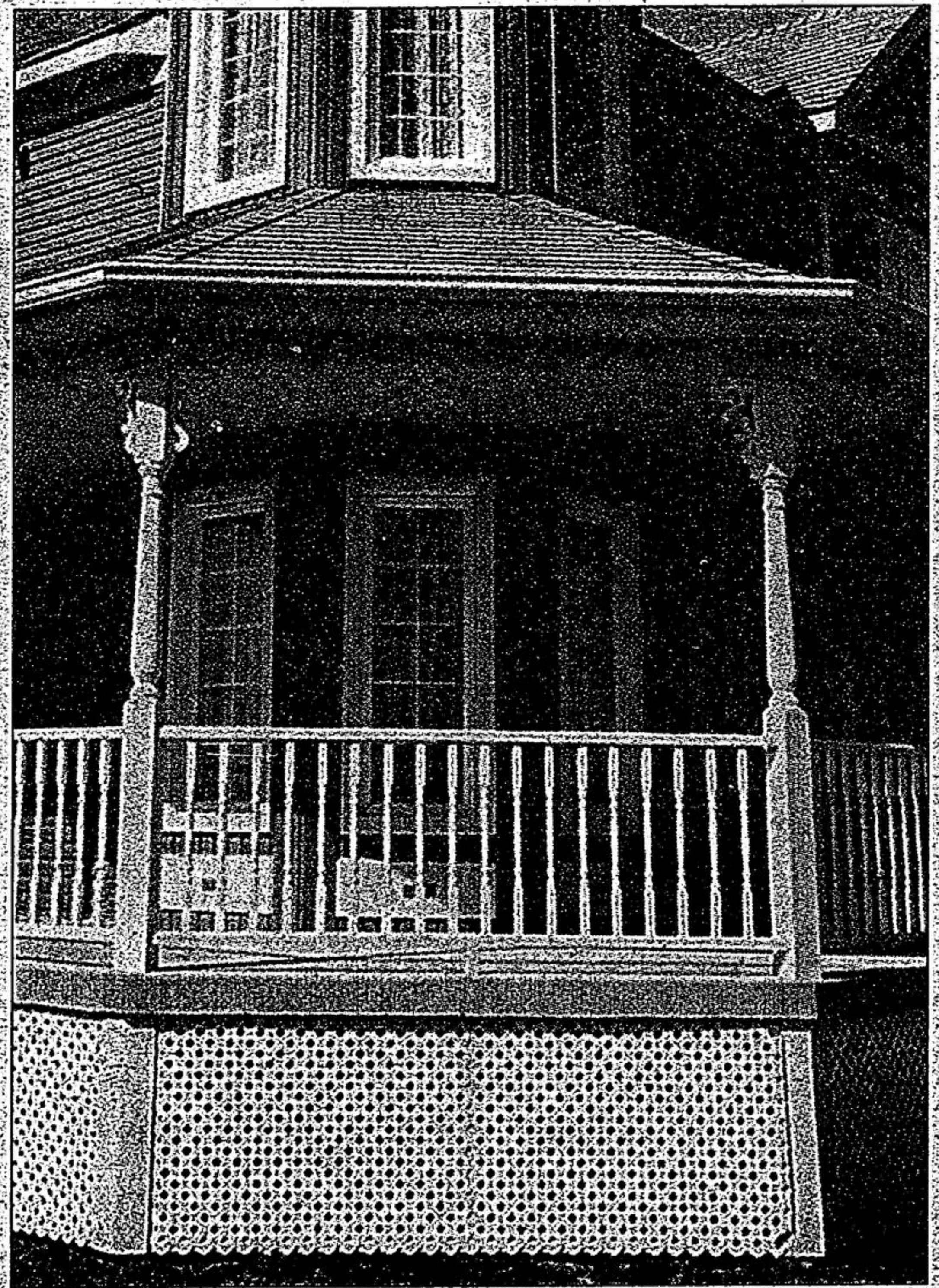
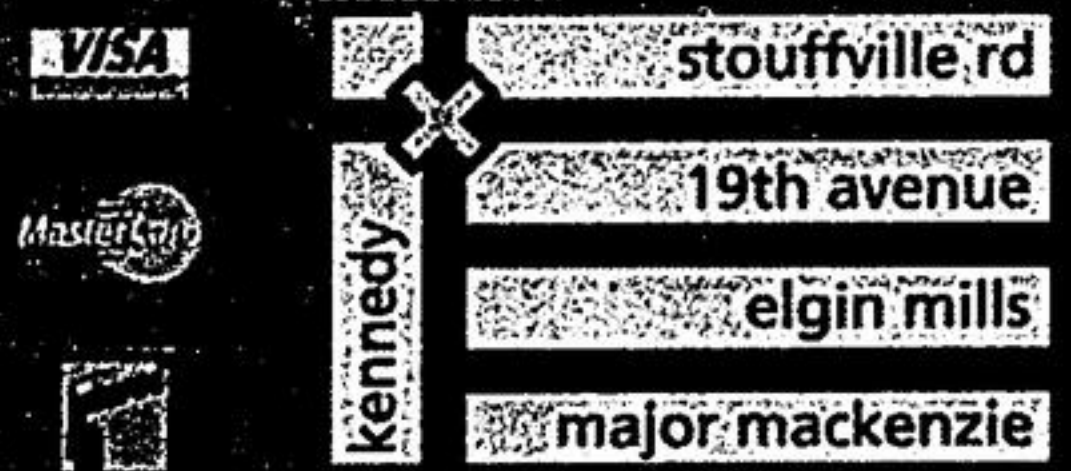
### Still waiting for last years garden to bloom?

This summer, don't let your hard work go to waste. With our selection of annuals, perennials, beautifully arranged planters and hanging baskets, Kennedy Greenhouses will help you get the garden that you deserve the first time around.



Mon-Fri 9-7 Sat-Sun 9-6  
11574 Kennedy Rd. Markham Ont L6C 1P3

905-887-1130



To avoid accelerated deterioration, it is essential to properly prepare the surface to be painted.

If the paint that you applied only a year or two ago on your exterior siding, your windows, or your balcony is already starting to flake or lift, it is probably due to lack of preparation. Obviously, good paintbrushes, a quality primer, and highly durable paint or stain are essential for a successful result; however, they cannot prevent rapid deterioration unless you properly prepare the surface to receive the new paint.

When purchasing paint, listen to the advice of the sales expert. You should carefully read the instructions before you even open a can of paint. Start by scraping and sanding the surface evenly. If you discover that some of the siding or other wooden pieces are damaged, replace them before you paint. Clean the surface with a triphosphate sodium solution (TSP) or some other dealer recommended cleaning solution to remove dirt, glue, grease, and dust. Grease can contaminate the paint and block its adherence, preventing it from protecting the wood. Because paint cannot adhere to grease, it will flake and lift.

Rinse the entire surface twice, preferably using a pressure hose. Let it dry for at least 48 hours or more, even if the surface appears dry, to be sure that no moisture remains sealed in the wood. It is recommended that you paint in the shade because the full sun dries the paint very quickly, but only superficially. The paint could lift if the under-layer remains humid. You can now apply the first coat of paint. Let it dry for 24 hours before applying a second coat.

### WHAT YOU NEED TO KNOW ABOUT REPLACEMENT WINDOWS

There are many reasons Canadians decide to replace their existing windows. Fogged-up glass, rotting and cracked frames, drafty and inoperable sashes are just some of the issues that top the list. Despite rising energy costs, and environmental awareness, architectural details and style are stronger motives for some. Thank-fully with today's energy efficient windows consumers shouldn't have to choose style over performance.

Replacement windows and doors are now available in a wider variety of materials and finishes than ever before. Fiberglass and composite materials are the relative newcomers, but vinyl and wood products still dominate the market.

Choosing the right product is still only one of many choices the consumer must make. Many home improvement companies favor an "insert" style of installation, where the new window is fastened directly into the old window frame. This is a quicker and less expensive option because very little carpentry is involved. The preferred installation involves removing the entire window to the rough opening, and replacing everything

including the interior mouldings. Older homes with large mouldings or brick and block construction may be better with the insert method.

A reputable company should be able to inform the homeowner of their options and provide solutions that perform well and add to the home's architecture. A good window is only as good as it's installation, so always check references and if possible visit completed projects.

FIELDSTONE WINDOWS LTD. takes pride in their quality products, professional consultation, and expert installation. Prices are competitive, and quotes are always free of charge.

Watch for Fieldstone Window products on HGTV's newest design show SARAH'S HOUSE tuesday evenings at 9:00 p.m.

Phone: 905.640.9287 Toll Free: 1.866.202.0286  
[www.fieldstonewindows.com](http://www.fieldstonewindows.com)

