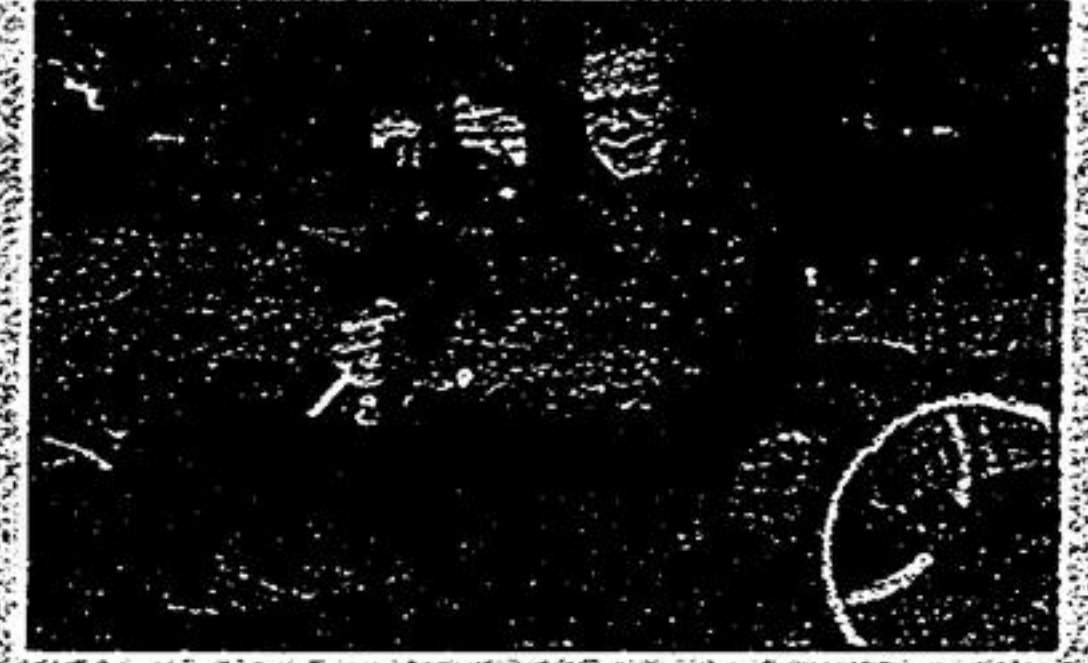


# Stouffville Sun-Tribune

SATURDAY, JUNE 2, 2007 ■ SERVING THE COMMUNITY OF WHITCHURCH-STOUFFVILLE ■ 32 PAGES/\$1 INCLUDING GST



**5** Wheels in Motion paying dividends in Stouffville, ambassador says

Learning ..... 4  
 Total Home ..... 10  
 Sports ..... 12  
 Classified ..... 15

## National honours for society's driving force

*Campbell volunteer after husband survived*

BY HANNELORE VOLPE  
Staff Writer

Janet Campbell has received nation-wide accolades from the Canadian Cancer Society for her dedication to cancer patients and the society.

The Whitchurch-Stouffville resident, who has volunteered for the society for 11 years, was presented with the National Volunteer Award last month.

There are about 75,000 society volunteers across Canada.

When she began looking for volunteer work, she chose the society because her husband had beaten the disease.

"We are both grateful there was research in place that has allowed him to be (a cancer survivor) for about 30 years," she said.

She couldn't forget the toll the daily drives to Toronto for treatments took on her family.

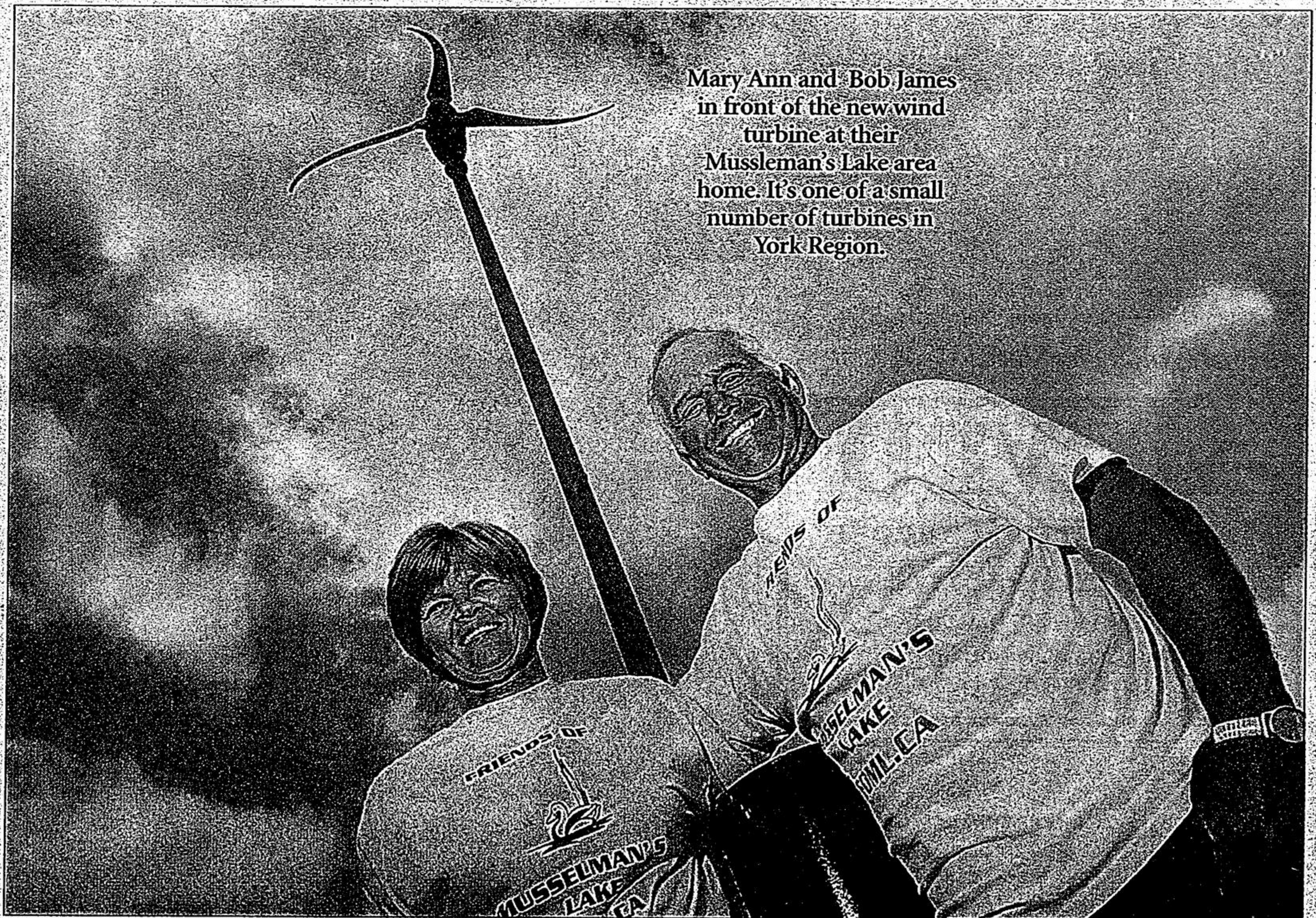
That's why she began her association with the society in 1996 by driving patients to daily treatments, often for weeks at a time and often to downtown hospitals.

For her, it's still the most satisfying part of her volunteer work.

"Some of the patients we have driven over the years have become friends," Mrs. Campbell said.

She still drives patients and, since 2000, has been the trans-

See REGION'S, page 7.



Mary Ann and Bob James in front of the new wind turbine at their Musselman's Lake area home. It's one of a small number of turbines in York Region.

STAFF PHOTO/BILL ROBERTS

MUSSELMAN'S LAKE ENVIRONMENTALISTS INSTALL TURBINE ATOP 42-FOOT TOWER

# Who has caught the wind?

BY HANNELORE VOLPE  
Staff Writer

Watching TV led to environmental action at the home of Bob and Mary Ann James last winter.

Mr. and Mrs. James happened to catch a show on The Discovery Channel last December about The Energy Depot in west-end Toronto, which had a wind turbine in front of its office.

As members of The Friends of Musselman's Lake residents' association, the James' have been interested in environmental matters for a long time and decided to do some research. They contacted The Energy Depot in January.

The result? There is now a 42-foot tower topped with three six-foot blades that swivel to catch the wind on their property on the

south side of the lake.

The unit was built in Flagstaff, Arizona, and installed May 3.

It's one of first residential wind turbines in York Region.

Although the system is supposed to pay for itself in around a decade, that's not the reason they have installed it.

The cost runs around \$12,000 for the unit and another \$3,500 or

so for the heavy-duty wiring.

The electricity isn't sold to the grid. If the windmill produces more energy than the household uses that amount is deducted from the James family hydro bill.

The wind turbine has been generating enough power to cover about 30 per cent of the household's energy requirements.

See NEIGHBOURS, page 8.

**Seaway Pools & Hot Tubs**  
 27 HERITAGE RD., MARKHAM  
 294-8030  
 beachcomber

12TH ANNUAL PREMIERE FINE ART SHOW & SALE  
 RAIN OR SHINE

ART & ANTIQUES IN THE PARK  
 MARKHAM  
 ADMISION - Adults \$5.00 • Seniors \$3.00 • Kids under 12 Free  
 produced by YTMG  
 sponsors: ACIFA, MARKHAM, etc.

SATURDAY, JULY 14 & SUNDAY, JULY 15  
 10:00AM - 5:00PM  
 Markham Museum  
 (Hwy. 48 just north of 16th Ave.)  
 For more information please call Johanne or Steve at 905-294-2200

OVER 100 ARTISTS, ARTISANS, ANTIQUE DEALERS & COLLECTORS  
 SILENT AUCTION  
 11:00am - 3:00pm  
 Saturday & Sunday  
 Kreative Kids  
 Create your own masterpiece!

**Sutton GROUP**  
 Town and Country Realty Ltd.  
 640-0888