

GALLO
REAL ESTATE LTD
BROKERAGE

Est. 197

We work for you.

905-640-1200

www.gallorealestateltd.com



BUILD YOUR DREAM HOME!

12.74 ACRES Rare property! Trees & Stream! Minutes East of Stouffville! \$369,900
48 X 92' LOT In town! Serviced! Beside the Park! \$179,900
Call for details - Kim Reesor* 905-640-1200.



WOW! - \$319,900

Det spacious 4 bedroom home in sought after family area! Hardwood & laminate floors! 3 baths! Finished bsmt! Dbl car gar!
Call Kim Reesor*, 905-640-1200.



FREEHOLD TOWNHOUSE!

Wow! 150' lot - court location. Nearly new approx 1500 sq ft! 5 appliances! Spotless! \$259,900.
Call Kim Reesor*, 905-640-1200.



EXECUTIVE HOME

Open concept! Gourmet kitchen open to family rm! Gas fireplace! Hardwood flrs, unspoiled w/out bsmt! Stunning decor! \$459,900. Kim Reesor*, 905-640-1200.



CHARMING CENTURY HOME

Tree-lined street! Pine flrs! High ceilings & baseboards! 3 porches! Private yard! \$449,900.
Kim Reesor*, 905-640-1200.



TASTEFUL DECOR!

Finished top to bottom! Berber carpet! 3 baths! Access to yard from gar! Start here!
Call Kim Reesor*, 905-640-1200.



GET THE WHOLE PACKAGE!

Great family home backing onto proposed 4.5 ac park. Fun for the whole family! 4 bdrms, 3 baths. W/o bsmt. Mn flr, FR. Call Kim Reesor*, 905-640-1200.



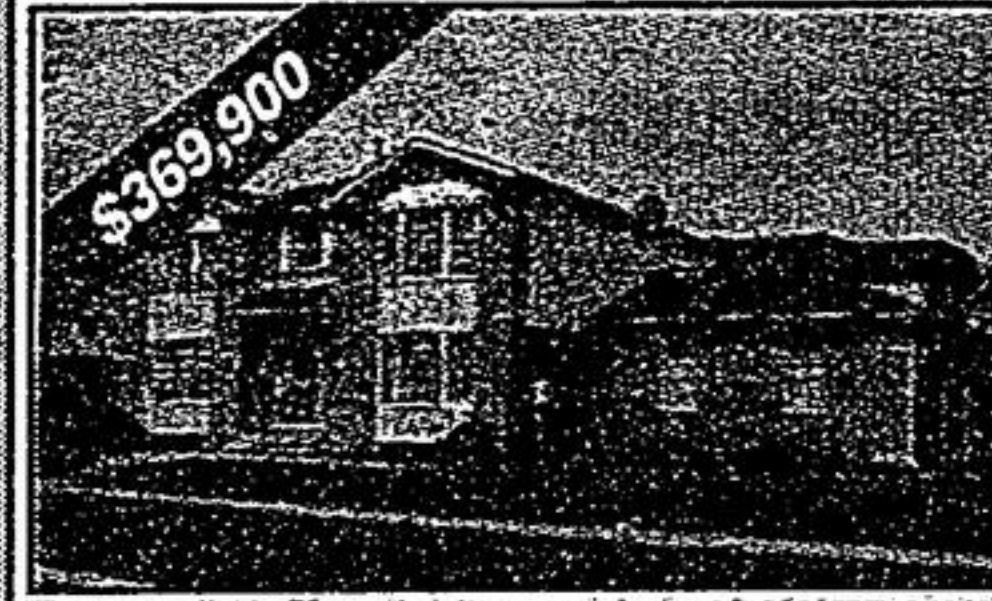
ESTABLISHED NEIGHBOURHOOD

Charming home nestled on a gorgeous d/town lot, wd trim, hwd flrs, upgds, walk to schls, GO. \$339,900. Call Kim Reesor*, 905-640-1200.



JUST LISTED! \$429,900

Great floor plan! Large foyer open to country kit/solarium! W/o to deck! Oak stairs open to fin lower level! Many updates thru-out! No neighbours behind! Call Kim Reesor* 905-640-1200.



QUIET CUL-DE-SAC! WALK TO GO TRAIN!

Well maintained family home! Country kit/w/o cedar deck! Mill fam rm/gas fp - formal lr & dr, ml laundry! Large fenced yard! Walk to schools, shops, park.
Call Kim Reesor* 905-640-1200.



JUST LISTED! - \$339,900

Solid 3+1 brick bungalow! Plus finished basement! Updated windows, shingles, furnace! Fabulous yard! Park your truck here! Kim Reesor*, 905-640-1200.



A WELCOME HOME!

Spacious Fairgate Home, plus sep ent to inlaw apt! Tastefully decorated! Country kit/w/o to fenced yard! Mill fam! Mill laul! Plus updated windows! Bamboo floors. Crown mouldings gas fp & more!
Call Kim Reesor*, 905-640-1200.



RANCH BUNGALOW!

One of a kind! Unique floor plan open concept! Vaulted ceilings! Fin bsmt/walk-out! Thousands spent on upgrades! Private treed setting - Splash pool Gazebo - heated garage! Fabulous gardens! & more. \$539,900.
Call Kim Reesor*, 905-640-1200.



COUNTRY ESTATE

Regional Forest & Equestrian trails, plus custom built home with large principal rooms + oversized attached 2 car garage with loft.
Call Barry Mitchell* 905-640-1200.



IN-TOWN LOCATION

Detached 3 bdrm family home with finished Fam Rm cw fireplace on lower level. Attached 1 car garage.
Call Barry Mitchell* 905-640-1200.



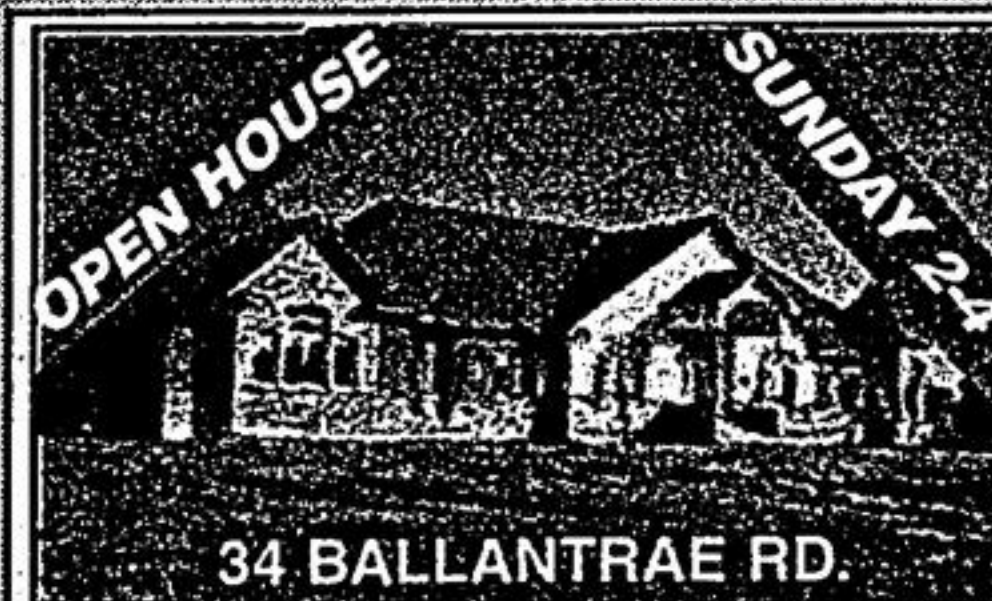
BUNGALOW W/W/O BSMT

10 acre property abutting York Regional Forest! Hardwood floors, maple kitchen, 2 fireplaces, finished basement!
Call Joseph Gallo*, 905-640-1200.



PRIVACY PLUS!

Over 1700 sf of frontage on this 24 acre parcel! Custom blt 5 bdrm, city kit, stone FP, 3 driveways, natural gas + 40x60 workshop!
Call Joseph Gallo*, 905-640-1200.



HWY. 48 N. OF AURORA RD.

Magnificent 3000 sq. ft. brick / stone / stucco 3 car gar. 1-1/4 acres + town water, natural gas, estate subdivision with access to reg forest. Maple kit cupboards, granite countertops, Brazilian cherry hardwood thru-out, immediate possession. Come see & compare. \$899,000.
Call Joseph Gallo*, 905-640-1200.



COUNTRY CLOSE TO STOUFFVILLE TOWN

1.93 acre home well set back from Bloomington. Great pool/decking, weedless garden, older renovated 4 bedroom/2 bath! See/buy w/Elaine Kalmbach*, 905-640-1200.



COUNTRY LIVING AT ITS FINEST!

Raise your family in spacious 3+1 sidesplit almost 3/4 acre. Large kitchen, 2 tier deck, hot tub, sunken living rm, sep dining rm. \$324,900.
Call Carol Kirkland* 905-640-1200.



EXECUTIVE BEAUTY

Greystone built, 3000 sq ft approx, open concept family kitchen, den on main, hardwood floors, premium lot - 147' deep! Sought after model! \$549,900.
Call Adele Gallo*, 905-640-1200.



ATTENTION TO DETAIL

Custom blt bung w/loft has superb craftsmanship - natural stone, a multitude of leaded windows, solid oak doors, granite flrs, maple kit w/granite tops & built-in's, in prestigious estate area.
Call Ross/Adele Gallo* 905-640-1200.



SERENITY & PRIVACY!

Come home to this immaculate 3 bdrm bungalow - open concept great rm w/gourmet kitchen, extended where forest surrounds you! Finished bsmt. Separate entrance - ideal in-law. \$839,000.
Call Ross or Adele Gallo*, 905-640-1200.



PROF. OFFICE FOR LEASE!

Brand new 2 units of 800 sq ft with kitchenette + 2 piece, tenant can choose colours, ideal for accountant, lawyer, esthetics, high traffic area!
Call Ross* or Adele Gallo* 905-640-1200.



LOVELY & RENOVATED!

Great 2 unit or single family home! Marvelous finishes inside! Detached double garage! Hardwood flrs throughout!
Call Chris Tancock*, 905-640-1200.



BEAUTIFUL CAPE COD

Lovely 4 bedroom on a superb lot with detached garage. Wonderful curb appeal, beautifully maintained! Asking \$319,000.
Call Chris Tancock*, 905-640-1200.



243 STOUFFER STREET

Fab 4 level backsplit, 3 b/r, family room, hardwood flrs, w/o to backyard! Great family neighbourhood! Walk to schools, parks & shops! A must see! Call Chris Tancock* for details, 905-640-1200.



191 MANITOBA STREET

NEW! OPEN HOUSE! \$349,900
Huge lot! 4 large bdrms! Main flr family rm! Separate entrance to bsmt! Main St. Stouffville to Baker N. to Manitoba #191.
Call Lesley O'Connor*, 905-640-1200.



14609 NINTH LINE

LAKEVIEW! 2 BDRM IN-LAW
Well built 3+2 bdrm home. 10 mins to GO Trn, prv. lot. Come see how you fit w/this one! \$389,900.
9th Ln 10 mins N of Stouffville #14609 or call Lesley O'Connor*, 905-640-1200.



YOU HAVE TO SEE THIS ONE!

Fully renovated, 3+1 bedrooms, overlooks lake with 50' waterfront. Gorgeous views front & back. \$449,900. Call Lesley O'Connor, Sales Person and Certified Staging Professional, 905-640-1200.

Outstanding Service... Does Not Cost More