



KEN BIRCH
Sales Representative
416-229-1010
Sutton
Central Realty Inc.
Brokerage

18 HAVELOCK GATE, MARKHAM

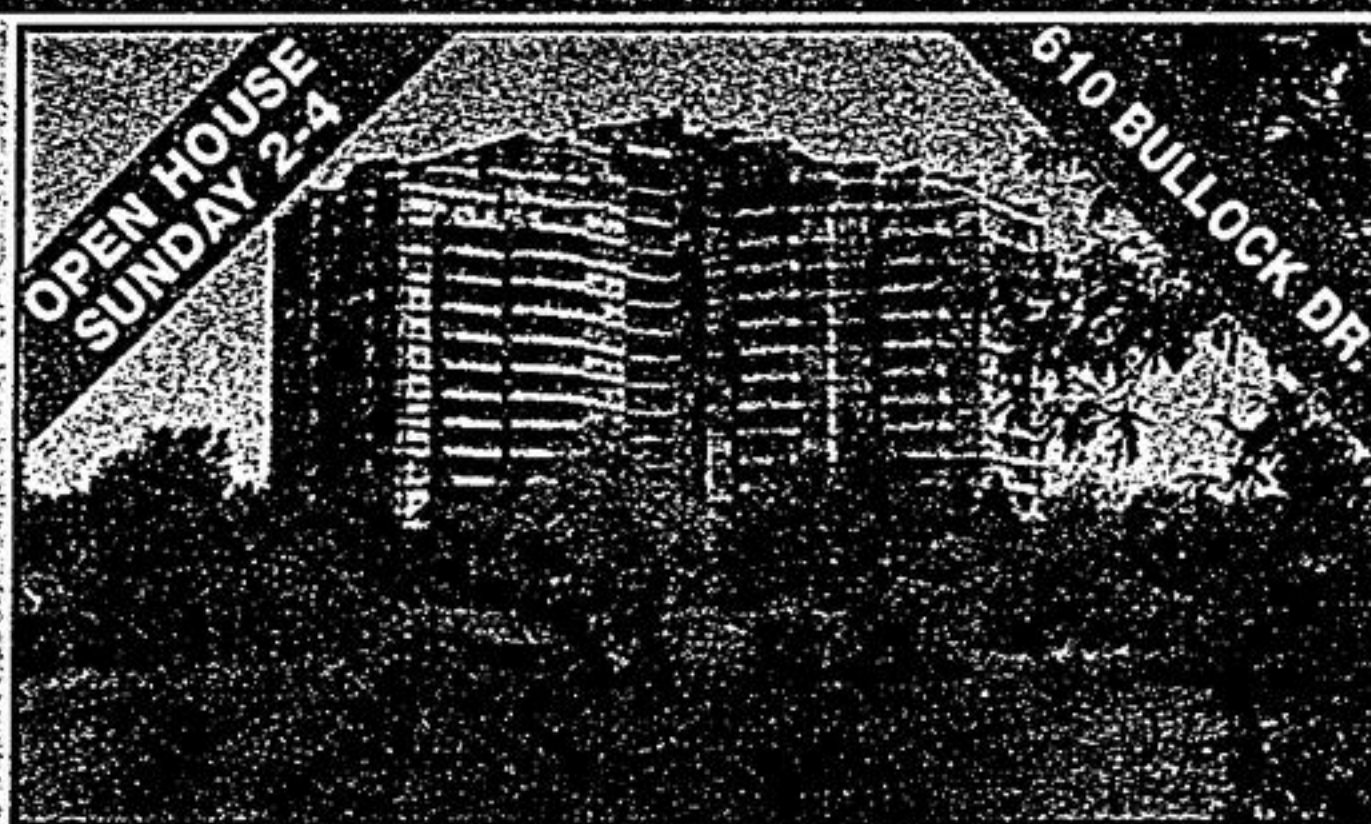


Absolutely Stunning & Well Maintained Home On A Premium Lot. Backing Onto Golf Course In The Rouge Fairway Community Very Contemporary Layout. Open Foyer Leads To Inviting Living/Dining And Family Rooms. Beautiful Hardwood Floors & Ceramics On The Main Floor. Main Floor Laundry With Garage Entry.

\$419,900

CALL PAUL GILL
Sales Representative
416-291-0929
Century 21
Regal Realty Inc

THE PRESTIGIOUS HUNT CLUB



Overlooking pond & park, elegantly appointed Wilshire Model, approx 2000 sq ft, lrg living & dining rm, marble FP, solarium, 3 w/o's to lrg balcony, 2 lrg bdrms, 3 baths, 2 parking & locker, low maintenance fees, great amenities, 24 hr concierge. Call Paul to view! **\$549,000**

JULIE GRAY
Sales Representative
416.488.7000
MARTIN & MEREDITH
LIMITED REAL ESTATE BROKERAGE

15 WOODGLEN WAY



\$318,900
3 bedroom Townhome in Heart of Old Unionville. Family room, walkout to deck & private garden. Direct access from garage. Easy walking distance to Main Street.

JAYNE PATTERSON
Broker
416-525-4000
416-575-2111
ROYAL LEPAGE

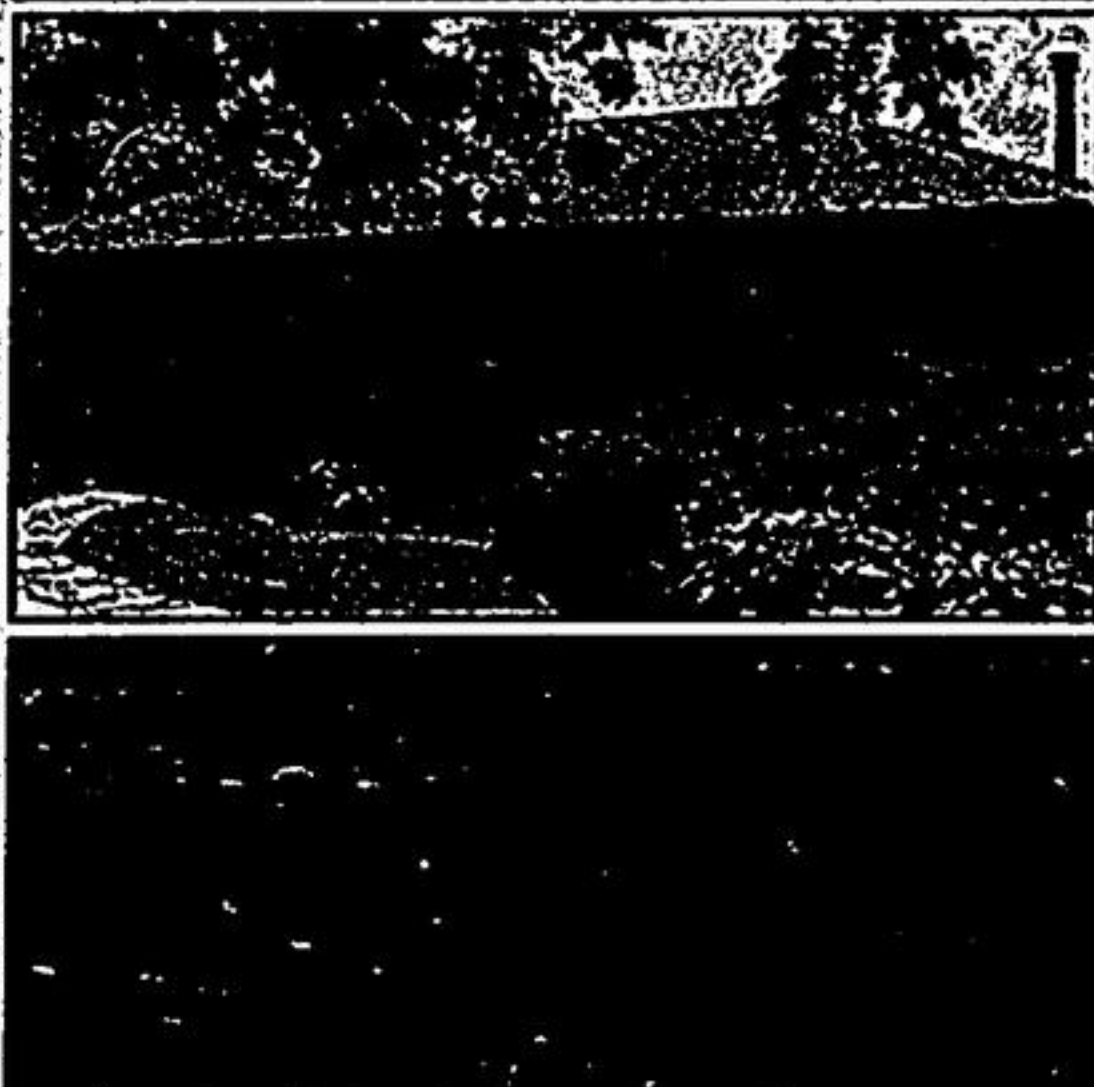
OPEN HOUSE SUNDAY 2-4 PM - 113 REEVE DRIVE



With finished basement, granite, stainless steel, double oven, wet bar, granite floors and great landscaping. Includes library, sunroom, and sunroom. Very bright, open concept, main floor with hardwood floors, granite, stainless steel, double oven, wet bar, granite floors and great landscaping.

Charlotte Angus
Sales Representative
cangus@bosleyrealestate.com
416.322.8000
BOSLEY REAL ESTATE

Preston Lake ~ Open House Sat & Sun 1-4



91 LAKEVIEW AVE.
Country charm near city amenities! Private lake community near Golf Courses. Lovely bungalow on large lot features 3 bedrooms, 2 bathrooms, updated kitchen & bathroom with whirlpool. Double French doors open to large deck with retractable awning. Finished basement has wood stove, walkout and built in bar. This well cared for home is a gem! **\$519,000.**

Larry Olson
Sales Representative
905-852-5325
1-888-887-1998

Open House Sat May 5, 2-4 pm - 15121 9 Line, Stouffville



Beautifully maintained 3 bedroom bungalow on 1/3 acre on 9th Line, completely remodelled & updated, windows, roof, kitchen, bathroom, flooring, decorating, etc. **Granny** suite in basement with 2 bedrooms, kitchen, living area & a 3 pc washroom. **Separate** entrance. Close to 404 & easy commute to Markham, Aurora & Newmarket. **\$419,000**

Prudential
Sadie Moranis Realty, Brokerage

RUTH SMTH NANCY ETHIER
SALES REPRESENTATIVES
905-477-0011
RE/MAX
All Stars Realty Inc.

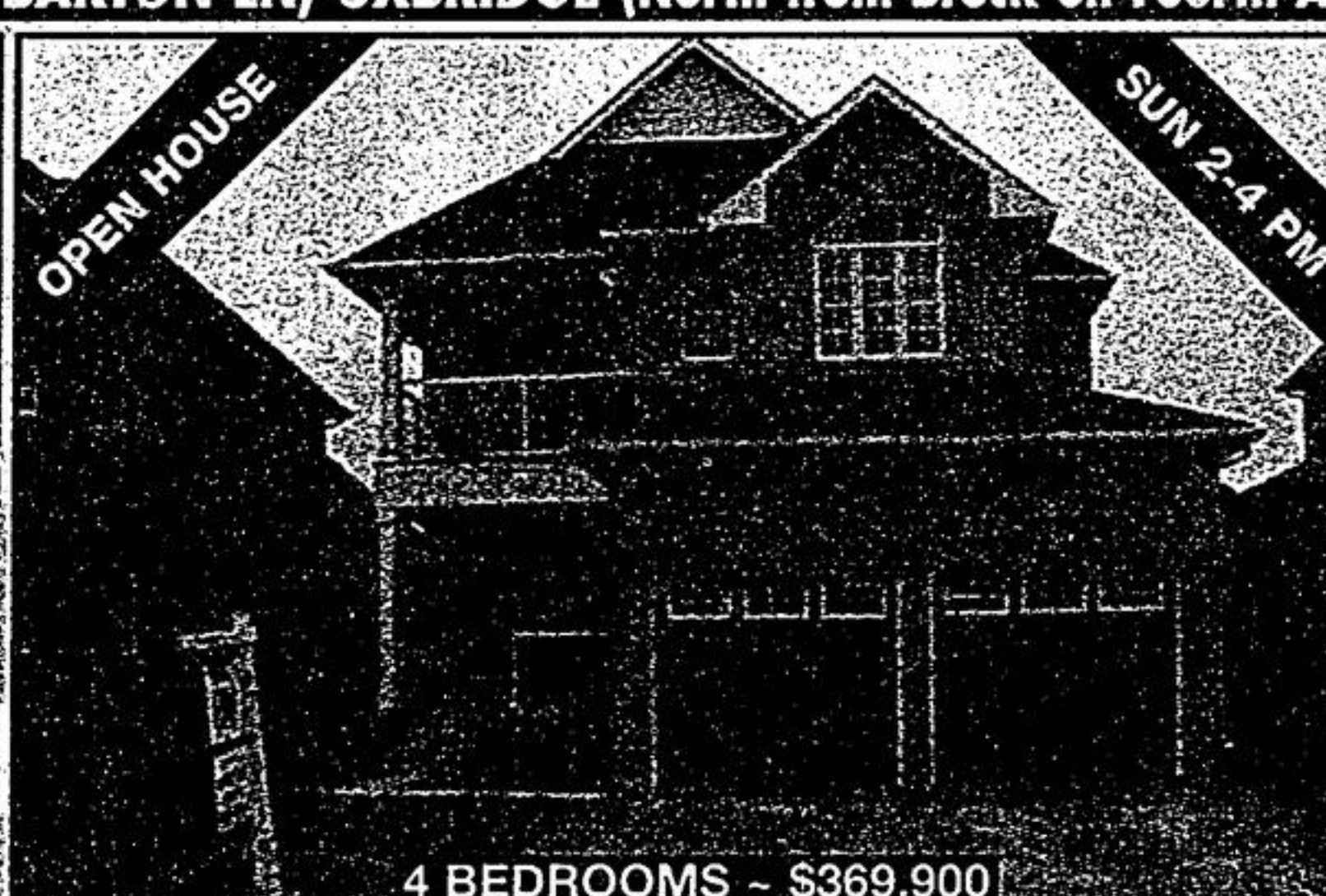
42 BOBBY LOCKE LANE, BALLANTRAE



Stunning Doral Model ... Loaded with upgrades! Spectacular Kitchen with Granite and top of the Line Cabinets and Appliances! Premium Lot Backing to Trees and Course. **ONLY \$579,000**

62 RUSSELL BARTON LN, UXBRIDGE (North from Brock on Fourth Ave to Russell Barton)

Beverly J. Thompson
Broker
416-571-6484
905-642-2223
K.R. MAY
K.R. MAY REAL ESTATE LTD.
BROKERAGE



Multiple upgrades & fin d top to bottom 40x110 treed lot. W/o to fenced rear yard & oversized patio. Dbl car gar w/ent to house. Main flr includes office, liv & din rm w/hdwd flrs, foyer kit & hallway have ceramic flrs. Other features include sep shower in master ens, FP, CAC, GVAC w/sweeper vents, reverse osmosis sys, water softener, humidifier, hwh is owned, gar door openers & remotes. This 3 yr new home is a 10! Call Beverly Thompson, Broker, 416-571-6484.

4 BEDROOMS - \$369,900

STEWART MADDEN**
(905) 836-1212
1-866-773-9595
smadden@trebnet.com
ROYAL LEPAGE
York North Realty Inc. Brokerage
Independently Owned & Operated

OPEN HOUSE • SUNDAY, MAY 6, 2-4 P.M.



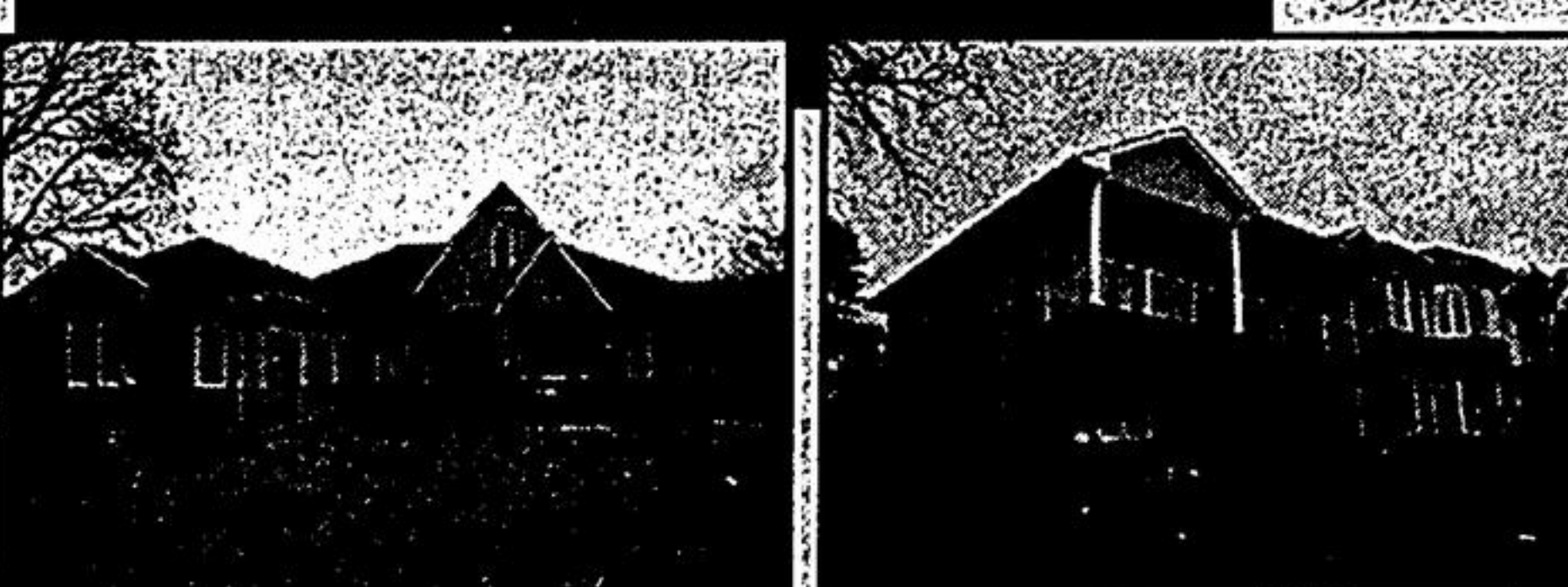
751 Pam Crescent, Newmarket, Patterson to Beman to 751 Pam. Awesome deal on this beautiful 3 bdrm, 1-1/2 bath, spacious open concept home on very quiet st. in centre of town, close to amenities. Huge sunken fam. rm, w/o sized sliding glass door to deck & fenced yard. Updates incl. kit., baths, most windows, flooring replaced. Huge master w/large triple closet. Fin. bsmt. w/ret. rm., woodstove, 4th bdrm./office & generous storage. **NEW PRICE! \$265,900**

**OPEN HOUSE: EVERYDAY 2-5 PM
4319 VIVIAN RD., STOUFFVILLE**



VIVIAN FOREST

New bungalow beauty backing on to conservation forest. 3,000 sq ft on 2 acres, 10 ft ceilings, crown mouldings, hardwood throughout, ceramics, pot lights, walkout basement and much more. Direct from builder. Custom maple kitchen with granite countertop. Call the builder.



Lillina Family Construction Ltd.
647-333-0977