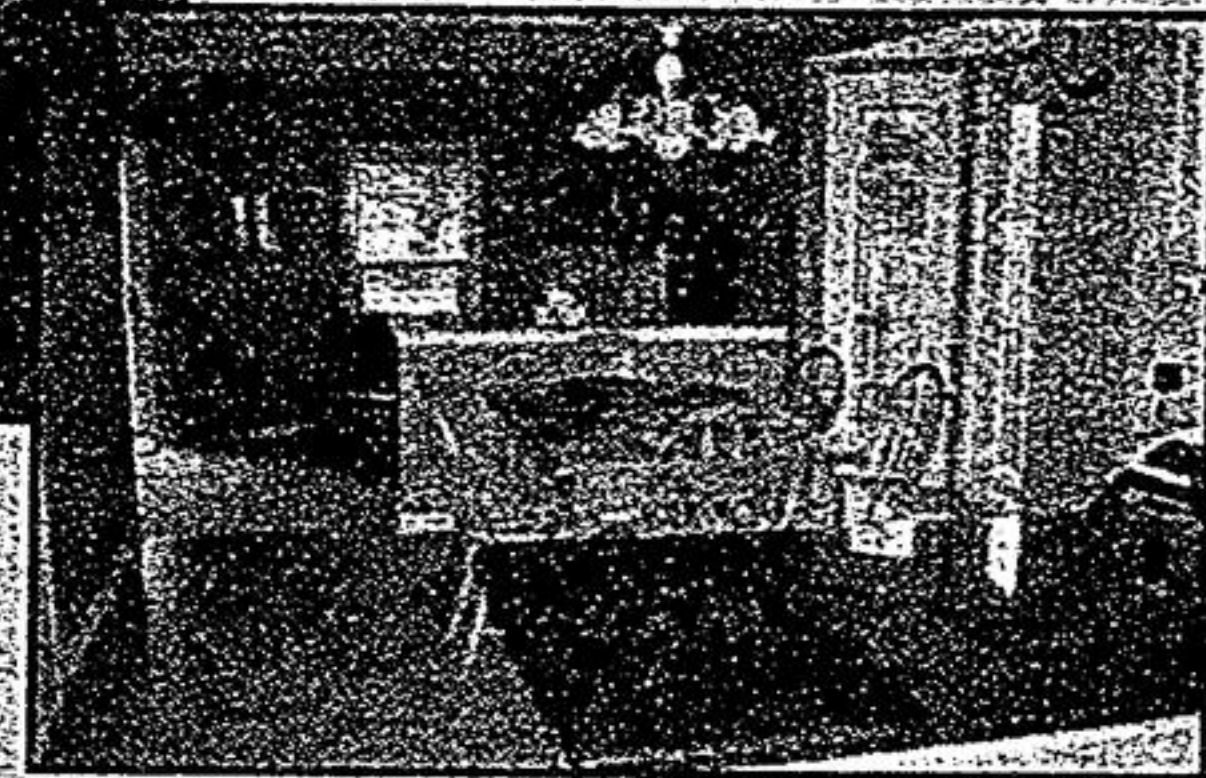
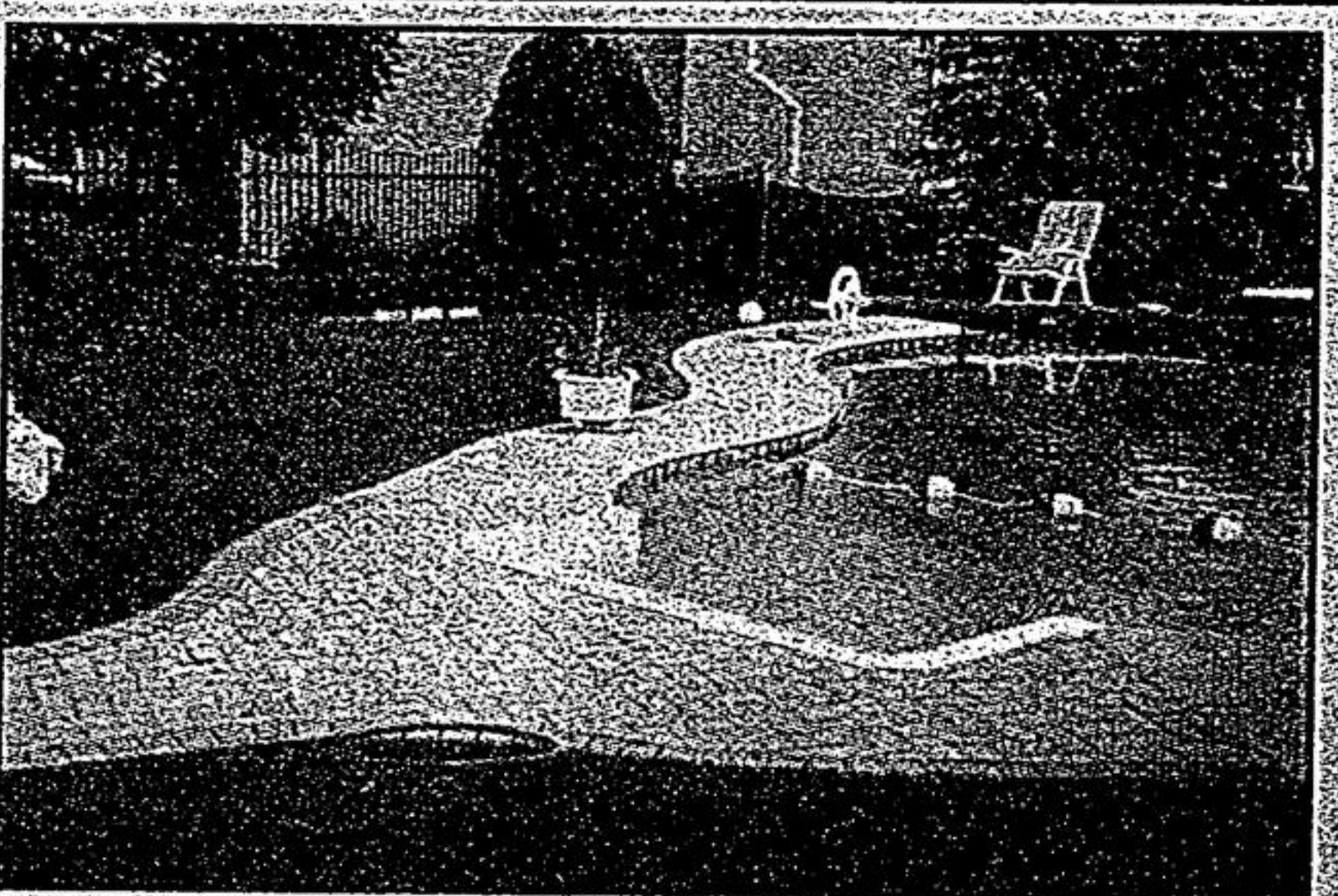


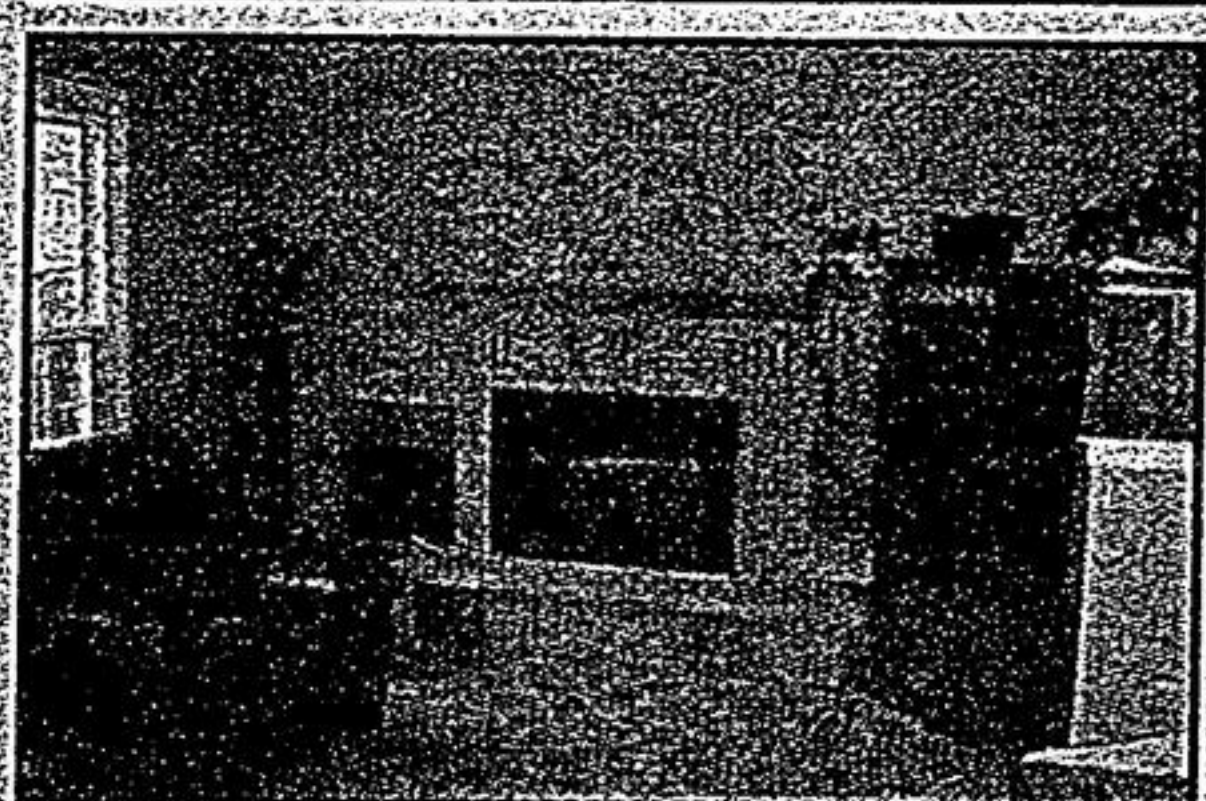
Debbie & Len proudly present 16 Springwood Crescent in Bridletrail



Situated on a Private, Premium Lot this lovely Executive Residence is over 3400 sq. ft. with a Spacious Recreation Room in the Basement and Inground Pool/Hot Tub in the Backyard.



- * Monarch's Robert Harrington Model...
- * Bright Family Size Kitchen open to Family Room
- * Nice Neutral Decor ~ 4 Bedrooms / Formal and Separate Dining Room
- * Newer Roof, Hi-Efficiency Furnace, Garage Doors and Much More!
- * Extensive Landscaping - Cabana, Inground Pool... private!



* Flexible Possession... Don't Miss this one!



DEBBIE & LEN

PLEASE CALL: DEBBIE & LEN POWELL*
905-940-4180 FOR MORE INFORMATION OR
EMAIL: DEBBIEANDLEN@ROGERS.COM
www.debbieandlen.com

Open House
Saturday & Sunday
2-4 PM



Sales Representatives



Jim Dolphin*
Sales Representative
905-947-9300



"TRUST YOUR HOME TO THE AGENTS THAT PUT THEIR HEART... INTO SOLD!"

Jane Ann Dolphin



jdolphin@trebnet.com
Sales Representative

MAGNIFICENT MATTAMY



- 87 MERDOCK, STOUFFVILLE
Spectacular open concept design & decor
* Customized "Sagebell" model over \$50,000 in upgrs
* Backs to pond
* Child safe court
* Hardwood floors
* Granite counter tops
* Stainless steel appliances and so much more.

ABSOLUTELY UNBELIEVABLE!!!

OUR RECENT SOLDS

9 CRANBERRY LANE



3 EVARIDGE DRIVE



AMAZING ASPEN RIDGE CORNELL



- 2939 BUR OAK
* Fabulous open concept three bedroom townhouse
* Fenced western exposure yard
* Two sided gas fireplace
* Upgraded kitchen cupboards
* Breakfast bar
* Valance lighting
* Spacious master bedroom with huge walk-in closet & ensuite.
* Immaculate & well appointed.

JUST LISTED

365 WATERSIDE CRES.



7 SANCTUARY LANE



VIRTUAL TOURS AT www.heartinsold.com or call 905-947-9300