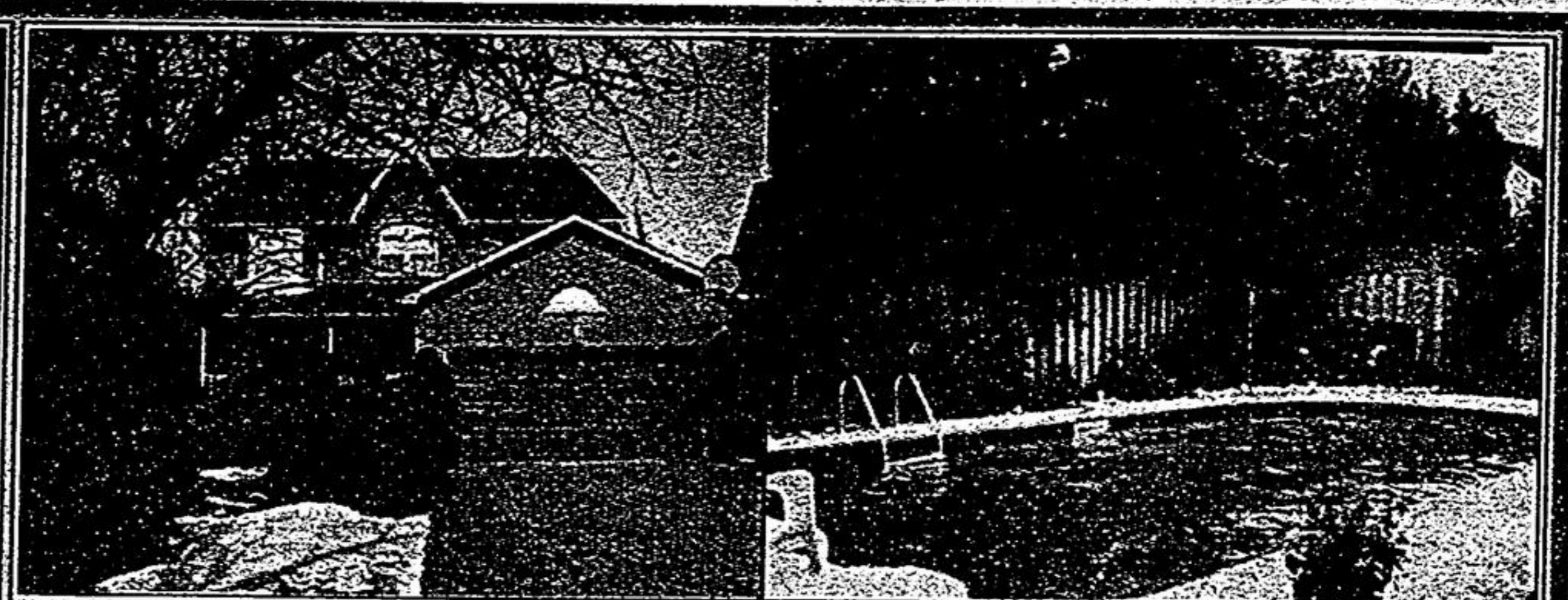


MR. & MRS. C.E.O. COULD "DINE HERE!" - 31 EAST DR. - \$1,088,000 - TANDEM GARAGE (3 CARS)
Walk to Main Street, Pond & GO Train. 85x265 ravine lot - backs to stream. A "10". Approx 3800 sf of perfection, library. A "10". 15' ceiling comb Din + Liv with marble FP. A "10". Open concept kit/family, over 9' ceiling in finished basement. A "10". Call Sylvia Houghton*, 905-947-9300. CH 201



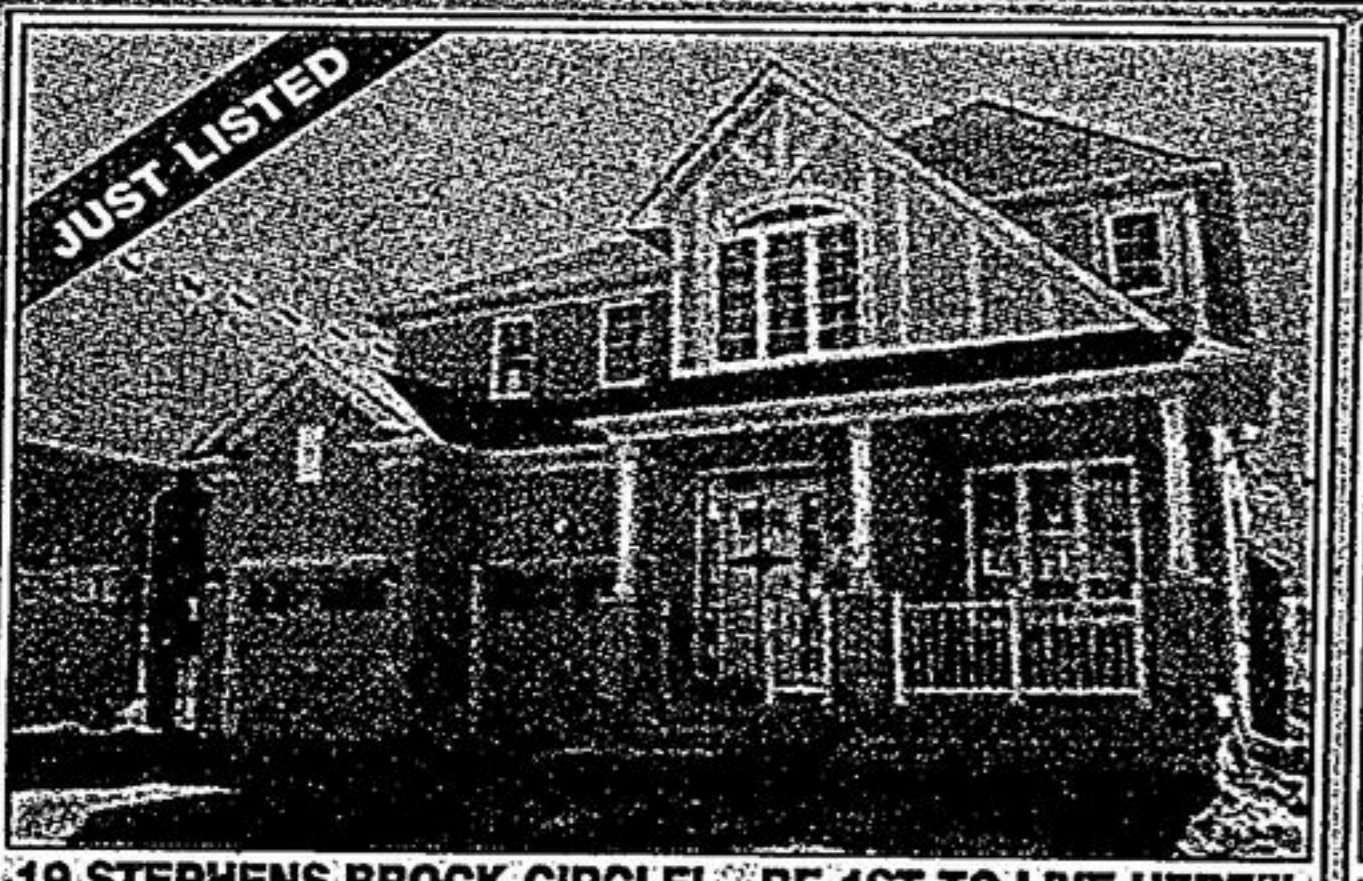
PRESTIGIOUS HOME - PRESTIGIOUS LOCATION - \$798,800
5+1 bedrooms, 5 washrooms, finished basement. Formal Living/Dining rooms. Brick fireplace in sunken family room. Main floor library with skylight & cathedral ceiling. Marble fireplace in master bedroom. Fabulous inground pool to splash away your summers! Call Sylvia Houghton*, 905-947-9300. CH 201



UNIONVILLE - LARGE FAMILY WANTED! - \$787,000 - 8 PRENTICE COURT
5+1 bedrooms, 5 washrooms. Finished basement. Separate Living/Dining. Stone fireplace in family room. 3 fireplaces in all! Fabulous greenhouse kitchen. 3612 sf of prestigious living. A must see! Call Sylvia Houghton*, 905-947-9300. CH 201



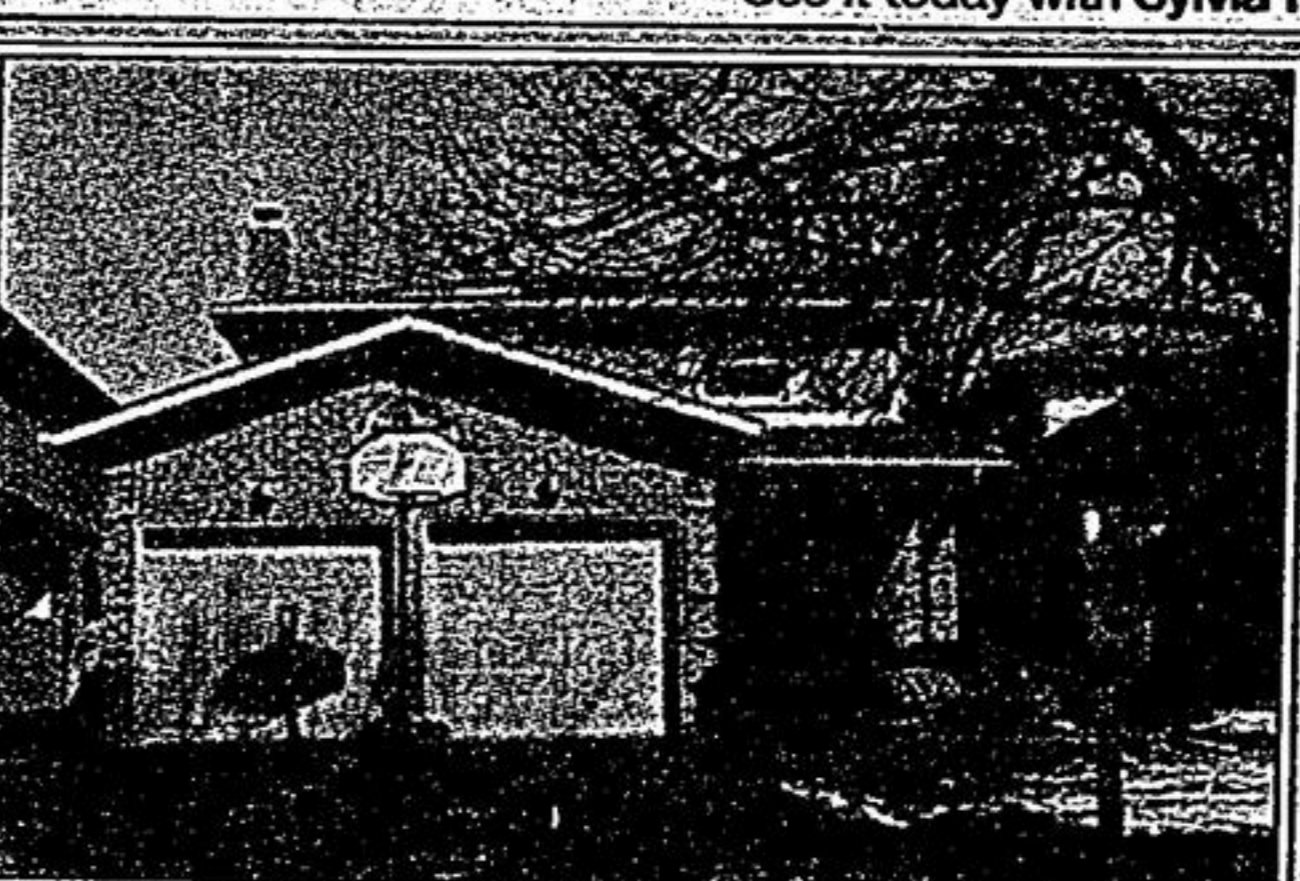
UNIONVILLE - 3484 SQ. FT. OF LUXURY - \$678,000 - AN AWARD WINNER!
4 bedrooms, 3 washrooms. Separate Living/Dining room, Kitchen has ceramic floors & cathedral ceilings. Main floor family room with fireplace plus library with French doors. A grand and Gracious home. See it today with Sylvia Houghton*, 905-947-9300. CH 201



JUST LISTED
19 STEPHENS BROCK CIRCLE! - BE 1ST TO LIVE HERE!!!
STOUFFVILLE - \$457,000
Fantastic "New", 2600 sf home features 4 bdrms, 2nd floor laundry, main flr Fam Rm open to upgraded kit w/ "granite countertops". A "look out" basement & more. Call Sylvia Houghton*/Sherry Hayes*, 905-947-9300. CH 201



JUST LISTED
JUST LIKE "A MODEL HOME" - \$558,800
Approx 2900 sf, gleaming hardwood in liv/din, hallway & main flr fam rm w/gas fireplace open to huge gourmet kit w/centre island & w/o to patio, 4+1 bdrms w/5 pc ens. 2 other bdrms have ens. Beautiful fin bsmt w/3pc & 5th bdrm. Call Derek Houghton**, 905-947-9300. www.derekhoughton.com CH 201



DEFINITELY A "TEN" - 40 RADFORD CRES - \$411,000
A "Must See" for this amazing renovation in this 4 bdrm home w/prof finished bsmt on a 40'x117' lot. Great neighbourhood; walk to schools, parks, William Armstrong & Markham High & easy access bus to St. Pats. Call Sylvia Houghton*/Katherine Morgan*, 905-947-9300. CH 201



SWAN LAKE GRANDEUR - \$448,000 - 2070 SQ. FT.
Why wait - move into this upgraded end unit w/stainless steel appliances & granite countertops; hardwood floors in combined LR & DR. Large loft / 2nd bedroom, main floor master, 3 baths. Double car garage. Call Sylvia Houghton*/Katherine Morgan*, 905-947-9300. CH 201

MOVE UP TO THESE HOMES AND "SYLVIA HOUGHTON" WILL BUY YOUR HOME FOR "C-A-S-H"!



IMMACULATE UNIONVILLE BUNGALOW - \$518,000
3 bdrms, 3 wshrms. 6 yrs new, across from Conservation Greenbelt. Pantry in kit. Main flr laundry rm. Door into garage, cold cellar. Fenced yard. Grapes, apples, pear, cherry & plum trees. See it today with Sylvia Houghton*, 905-947-9300 CH 201



BALLANTRAE GOLF & COUNTRY CLUB - \$517,000
A Golfer's Paradise! 5 appliances, granite countertops. Hdwd flrs. The "Grand Cypress" Model w/approx \$50,000 in upgrades. Bring your golf clubs + there's room in your gar for a car too! See it today with Sylvia Houghton*, 905-947-9300 CH 201



SPLISH SPLASH! - \$573,000
187 JOHN BUTTON BLVD. - Exec 4 bdrm home w/prof fin bsmt & I/G pool. French ctry kit, newer wdws, newer roof, all this steps to French Immersion, Buttonville & St. Justin Martyr Elem & walk or bus to Unionville High. Call today Sylvia Houghton* or Katherine Morgan*, 905-947-9300 CH 201



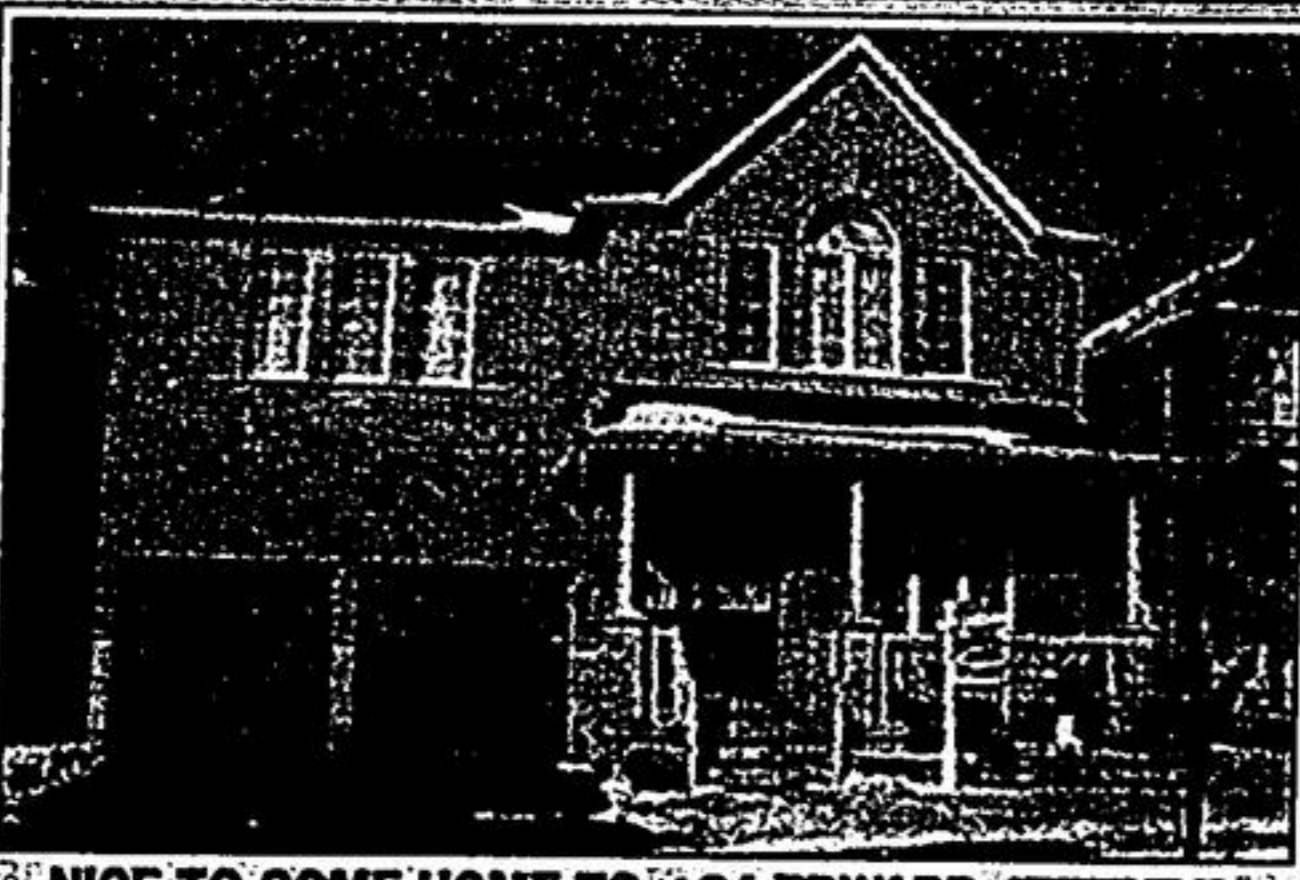
CEDAR RIDGE - 1.8 AC BUILDING LOT - \$468,000
This beautiful building lot has 359 ft frontage and is located in an exclusive area of fine homes. The perfect lot to build your dream home!!! Call Sylvia Houghton* or Sherry Hayes*, 905-947-9300. CH 201



MR. & MRS. NICE NEIGHBOURHOOD - 46 EMELINE CRES - \$523,800
Design decor in this totally upg'd 4 bdrm exec home w/prof fin bsmt. Newer windows, roof & furnace. Hdwd on both main & 2nd floor. Stunning kitchen & California shutters. Call Sylvia Houghton* or Katherine Morgan*, 905-947-9300 CH 201



INGROUND POOL, WATERFALL, PERENNIAL GARDENS - \$385,000
No need for a cottage here! 4+2 bdrms, 3 wshrms. Separate living/dining, w/out from kitchen. Family room w/fireplace. 2020 sf. Fenced yard with 2 gates. Many new windows, furnace (2001). Call Sylvia Houghton* for more details, 905-947-9300. CH 201



NICE TO COME HOME TO - 84 EDWARD JEFFREYS - \$538,000
Main flr library in this lovely 3000'. Great Gulf Home. Gleaming hdwd flrs on main; 4 bdrms + computer niche on 2nd flr. 9' ceilings, separate side entrance w/2nd set of stairs to bsmt. Call Sylvia Houghton* or Katherine Morgan*, 905-947-9300. CH 201



FABULOUS GOLF COURSE LOCATION - \$648,000
Immaculate 4 bedroom, 4 washroom home built in 1997. Jacuzzi tub; granite countertops. 9' ceilings on main level. Wide baseboards, 2 staircases to basement. 3970 sq. ft. "Fambrook Home". An absolute delight! Call Sylvia Houghton* for more details, 905-947-9300. CH 201



STEP INTO 'PERFECTION' - \$627,000
Renovated and upgraded in 2006 this fabulous 4 bedroom 'Limited Edition' 'Angus Glen' home is magnificent from the first step inside. Exquisite hardwood, limestone entry and limestone countertops in brand new French Country kitchen, even the staircase is upgraded. See for yourself with Sylvia Houghton*, 905-947-9300. CH 201

VIEW THESE HOMES ON ROGERS CHANNEL 201 VISITUS