



SYLVIA MORRIS

Sales Representative

#6 by production in Canada for 2006

905-477-7785 cell 416-705-7785

CALL SYLVIA FOR A FREE MARKET EVALUATION

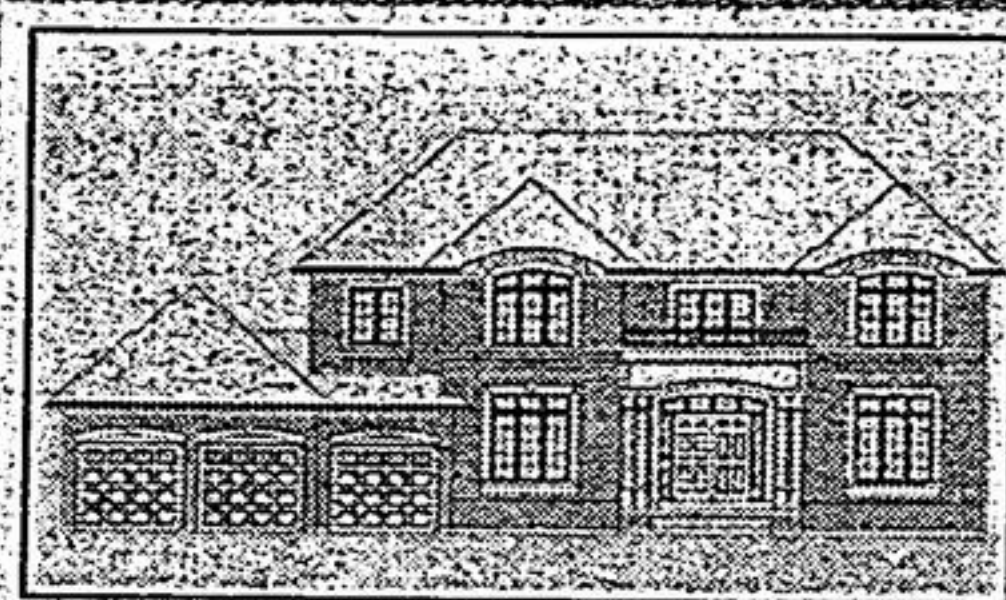


Leading Edge Realty Inc. Brokerage
Independently Owned and Operated

190 MAIN ST.,
Suite 201,
UNIONVILLE



LOT 3 CAIRO CRT, STOUFFVILLE
(BLOOMINGTON/10TH LINE)
Chiavatti custom built, bungalow, approx 1.5 acres, approx 2800 sq. ft. **\$849,900**



LOTS 4 & 5 CAIRO CRT, STOUFFVILLE
(BLOOMINGTON/10TH LINE)
Chiavatti custom built, 2 storeys, approx 1.5 acres, approx 3580-4180 sq. ft., closing June/07. **\$879,000 - \$949,000**



35 ODESSA CRESCENT
Absolutely stunning, approx 4178 sq. ft. of luxury, granite foyer, 10' ceiling on main flr, pillars, hdwd flrs, premium lot, backs ravine, double storey window backs ravine. **\$1,188,000**



5580 SHEPPARD AVE #410, TORONTO
(MARKHAM & SHEPPARD)
Fantastic location, 6 suites per floor, great investment, 2 bed-rooms, well kept condo. **\$114,000**



1 LINDCREST MANOR
Prime location, corner lot, facing 2 parks, lovely Greenpark home, lots of upgrds, neutral decor, 9' ceilings on mn flr, mins to 407 to 404. **\$429,800**



1275 MARKHAM RD #402, TORONTO
(MARKHAM/SHEPPARD)
Reno'd, very lrg unit, approx 1400 sq. ft. w/lrg balcony, many upgrds, 2 bdrms, 2 washrooms & den. **\$149,000**



32 WILDBERRY CRES., VAUGHAN
Fabulous family home in Vellore Woods, tons of upgrds, prof finished lower level, mins to Wonderland. **\$448,800**



5629 LAKESHORE RD., STOUFFVILLE
Unbelievable property, approx 2 acres, bungalow w/loft, finished bsmt, lots of upgrds, mins to lake/Hwy 48, million dollar subdivision nearby. **\$689,800**



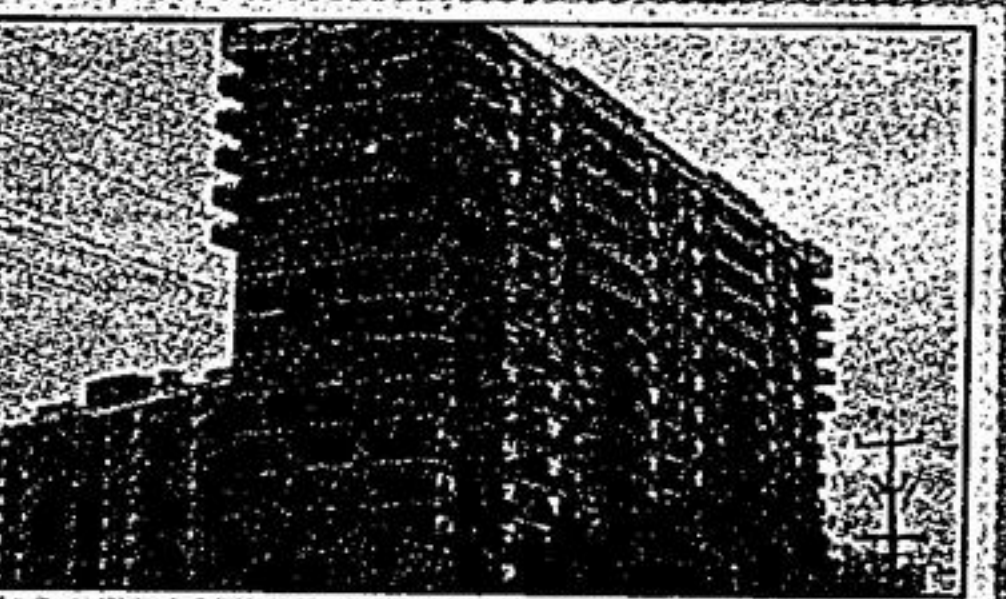
10 HARTWOOD PLACE
Lovely family home, approx 2200 sq. ft., courtyard, oak flrs thru-out, 2nd flr library/great rm, also main flr family rm, close to all amenities. **\$429,800**



10484 WOODBINE AVENUE
End unit, brand new, approx 2250 sq. ft. of luxury in European inspired Cathedral Town, 5' new appliances. **\$449,900**
Also avail for rent: **\$1,900/month**



50 MIRAMAR DRIVE
Gorgeous townhome by Baycrest Homes, thousands spent on upgrds, just over 2 yrs new, upgrd kit w/o to huge 2 tier deck, close to all amenities. **\$299,888**



2645 KIPLING AVE #101, ETOBICOKE
(FINCH & ALBION)
Lovely 2 bdrm unit on 1st flr, completely reno'd, freshly painted, upgrd bath, 1 pkg, fabulous location, walk to all amenities. **\$127,000**



41 FORTY-SECOND STREET
Walk to Main Street Unionville, library & art gallery, approx 3200 sq ft, main flr den, inground pool, walk to 2 schools, mins to 407. **\$509,800**



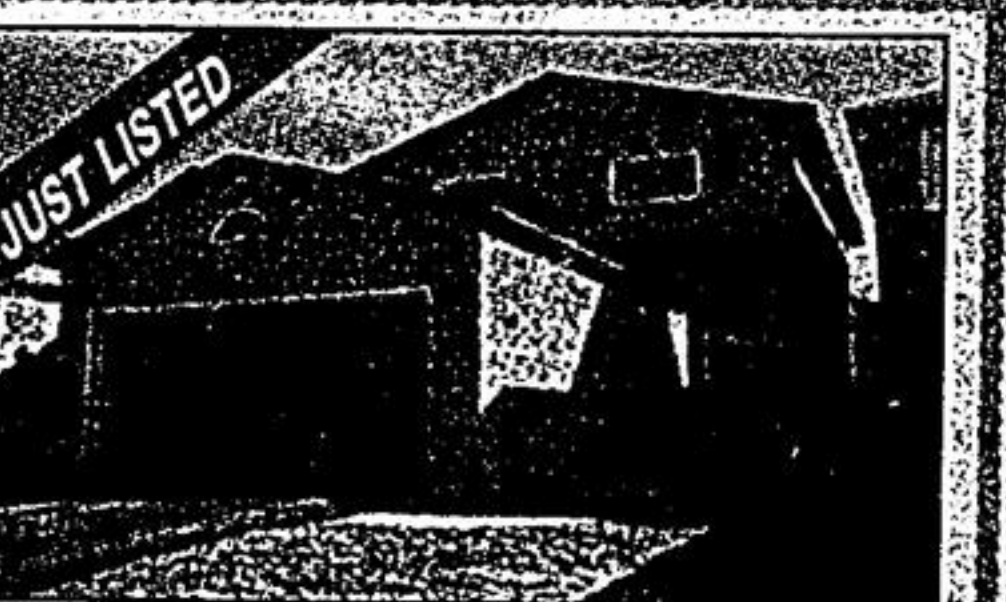
127 GOLDENWOOD CRESCENT
Built by Madison, 2 yrs new, 44' frontage, thousands spent on upgrds, English Country garden front & back, prof finished lower level w/bdrm, rec rm & 3pc bath. **\$419,800**



6 CORAL COVE COURT
Gorgeous home built by Madison, 3 yrs new, approx 2860 sq ft of luxury, \$\$\$ spent on upgrds, prof finished lower level w/bdrm, rec rm & 4pc bath, dead end street. **\$529,900**



5 CHANCERY ROAD
Lovely 1 1/2 storey home, 3 yrs new, 9' ceilings on main flr, oak flrs, lrg bsmt apt w/2 bdrms & sep entry, 2 laundry rms, mins to 407 to 404 & GO Train. **\$412,000**



49 MERCER CRESCENT
Raymerville area, new kit, fabulous master ensuite w/jacuzzi, prof fin lwr lvl w/3-pc bath, rec rm & wet bar, walk to all amenities, mins to 407 & 404. **\$378,800**



35 LONG STAN, BALLANTRAE
Ballantrae Golf & Country Club, frontage approx 100.75', the 'Grand Cypress' model, 2065 sq. ft. of luxury, approx \$50K spent in upgrds, prof finished lwr lvl w/rec rm, bdrm, office & 3-pc bath. **\$549,900**



Conservation area, totally reno'd, thousands spent on upgrds, w/o bsmt w/kit, bath & rec rm, wlk to 2 schls, Markville Mall & Hwy 7, mins to 407, 404.



Original owners, walk to Main St., 16th Ave & Go Train, very private backyard, walk to 3 schools, recently reno'd, child safe circle.



A Great Place To Call Home



To list or purchase a home call a local realtor who advertises in Markham
Stouffville Real Estate...and get fast, professional action!
Call 905-294-2200