



Mary Anne Macdonald
Candice Macdonald-Mackie

RE/MAX Classic Properties, Inc.



905-947-9300

Sales Representative
Registered Relocation Specialist
Hall Of Fame
Platinum Award
100% Club

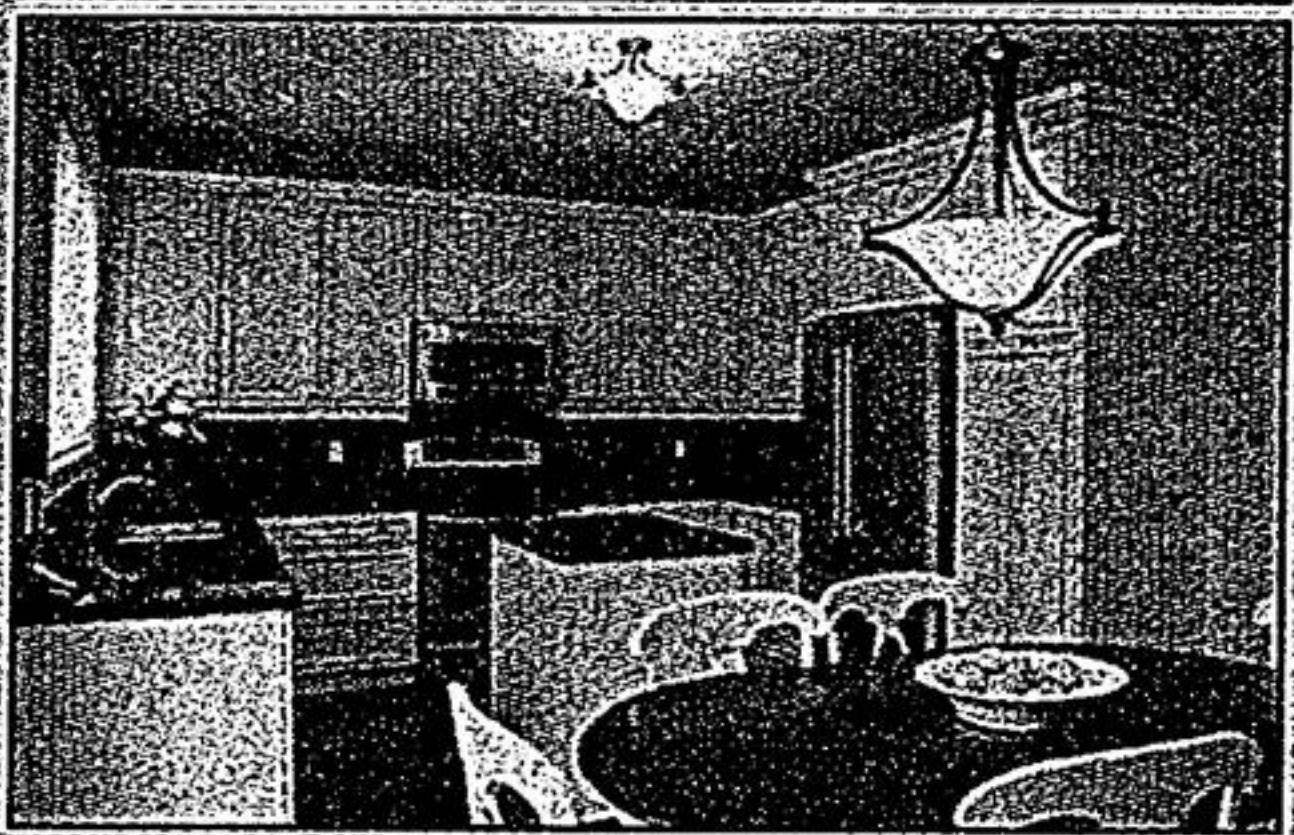
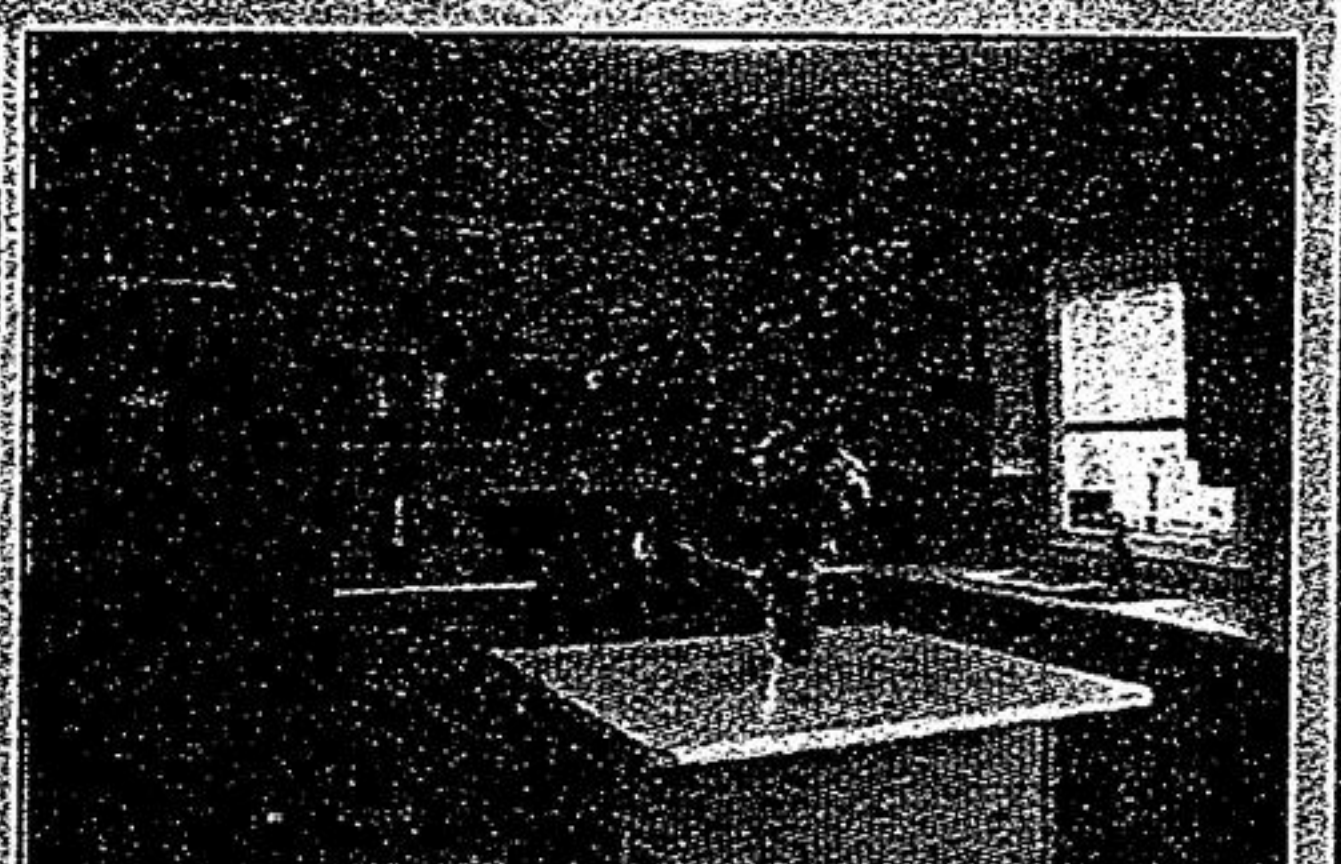
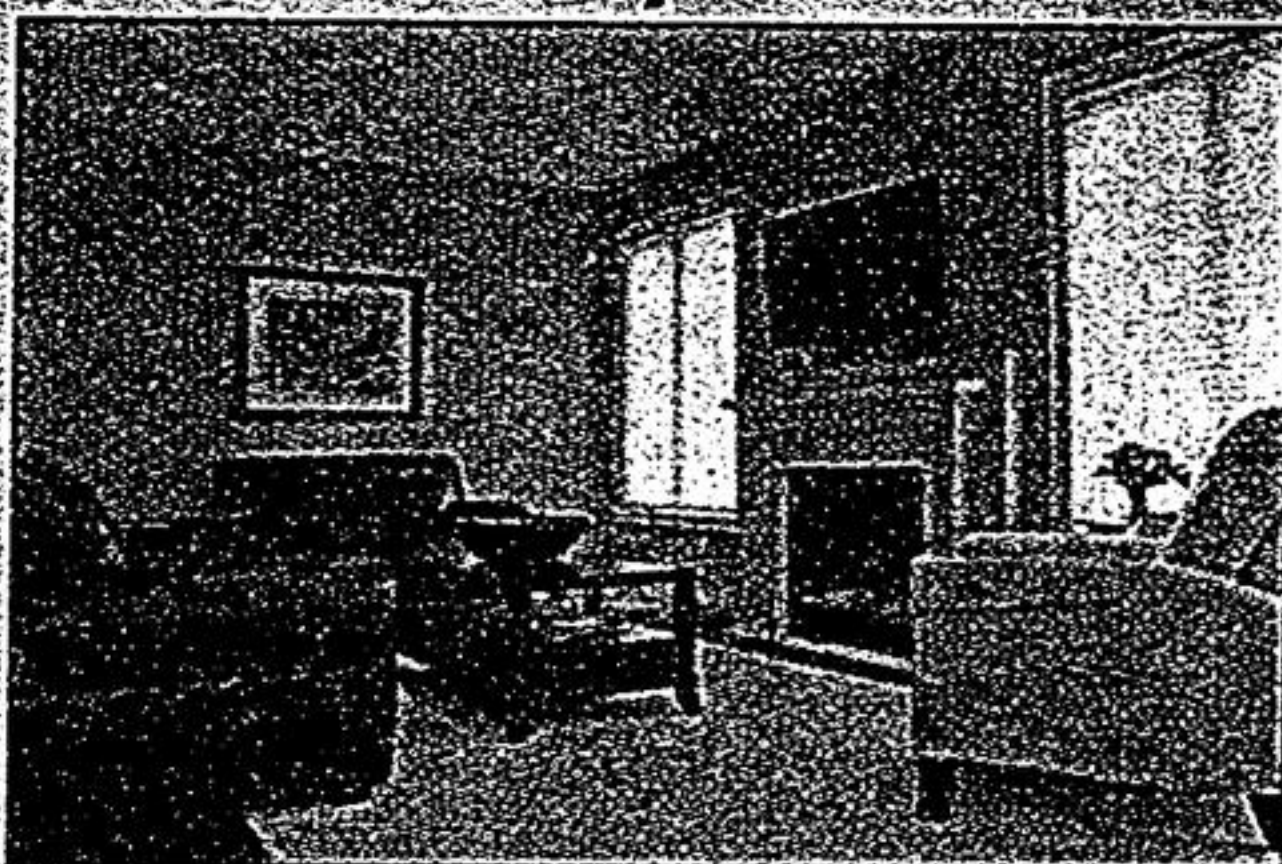


Simplify your search:

www.MaryAnneMacdonald.com

Not intended to solicit properties currently listed for sale.

The Inspired Community of Boxgrove!

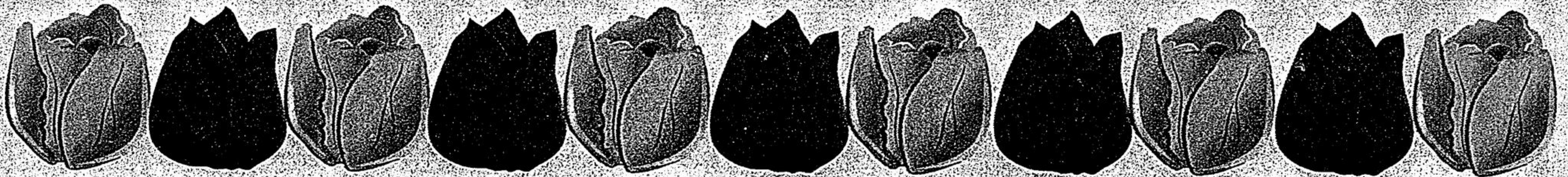


ELEGANCE EXEMPLIFIED! ~ 49 BOSWELL RD., MARKHAM
ASKING \$499,000

ELEVATE YOUR LIFESTYLE! ~ 66 LEMS福德 DR., MARKHAM
ASKING \$469,000

Don't miss this opportunity to make this exceptional home your own. Overlooking greenbelt! Upgraded from top to bottom. Features inc: granite counters, hwd, surround sound incl plasma TV & b/in speakers, marble FP mantle, amazing French cntry kit, 9 ft cigs, & incredible master ens! Experience quality!

Premium 74 ft wide backyard! Driveway large enough for 8 cars plus a 2 car garage. Outstanding 2700 sq ft 4 bedroom home. Open concept in design - perfect for a growing family. Extras include beautiful hwd, 9 ft ceilings, butler's pantry, separate entrance to the bsmt & 4th bedroom w/ensuite washroom.



REAL ESTATE

Showcase

Published weekly by the Markham Economist & Sun
A Division of Metroland Printing, Publishing and Distributing Ltd.
Publisher - Ian Proudfoot
Director of Advertising - Barry Black
Advertising/Marketing Sales Representatives - John MacRae & Gail Reeves

OPEN HOUSE SUNDAY APRIL 1, 1-3 P.M.
67 MORNING DOVE DRIVE

BRAD TATE
Sales Representative
905-831-2273

COLDWELL BANKER
CASE REALTY BROKERAGE
Independently owned & operated

Beautiful, almost new 2600 sq.ft home in Markham's Cornell neighbourhood. Open concept layout, 4 bedrooms, 9 foot ceilings on main floor - simply gorgeous!! \$465,900

NEW YORKTON
ELEGANT BROWNSTONE LIVING

Call 905.604.1800 or visit kylemorecommunities.com

*See sales representative for details. Price and specifications may change. EO&E

Singles & Brownstone Town
Manors from the \$400's

Nestled against scenic vistas of the York Downs Golf & Country Club, New Yorkton offers exquisite Singles and Towns. Expect the height of fine living, with 9' ceilings, butler's pantries, designer fireplaces, sumptuous ensuites and double car garages. Live in a gorgeous master planned community, just steps from historic Main Street Unionville.

NOW OPEN

KYLEMORE COMMUNITIES

4476 16th Ave, Unionville.