

GALLO
REAL ESTATE LTD.
BROKER/REALTOR

We work for you.

905-640-1200

www.gallorealestateltd.com



BUILD YOUR HOME!

BUILDING LOT!
In town Stouffville! Rare! 48 x 92! Borders the park! Established neighbourhood!
\$179,900.
Call Kim Reesor*, 905-640-1200.



ESTABLISHED NIEGHBOURHOOD!
Quaint & cozy 1-1/2 storey! Tastefully decorated! Hardwood flrs. wood trim - updated windows - shingles furnace! Fabulous yard! Gardens!
Call Kim Reesor*, 905-640-1200.



JUST LISTED!
Spacious backsplitt! Country kitchen, hardwood floors! Large family room! Separate entrance, 2nd kitchen. Potential in-law.
Call Kim Reesor*, 905-640-1200.



GREAT FAMILY HOME! \$409,900
Open concept. Fabulous 2nd floor family room. Gas Fireplace plus 4 bedrooms! Main floor laundry. Access to garage! Backs to pond and trees!!!
Call Kim Reesor* 905-640-1200.



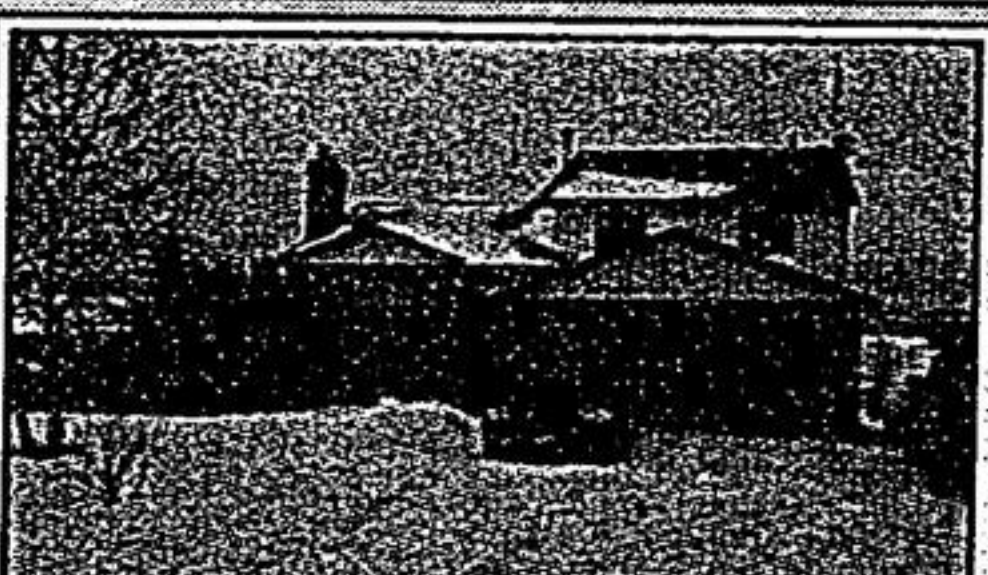
EXECUTIVE HOME!
Stunning home! Open concept! 9' ceilings! Hrdwd flrs! Potlights. California shutters! Fabulous mstr bdrm ensuite! Mn flr laundry! Access to garage! Premium Yard. \$474,900
Call Kim Reesor*, 905-640-1200.



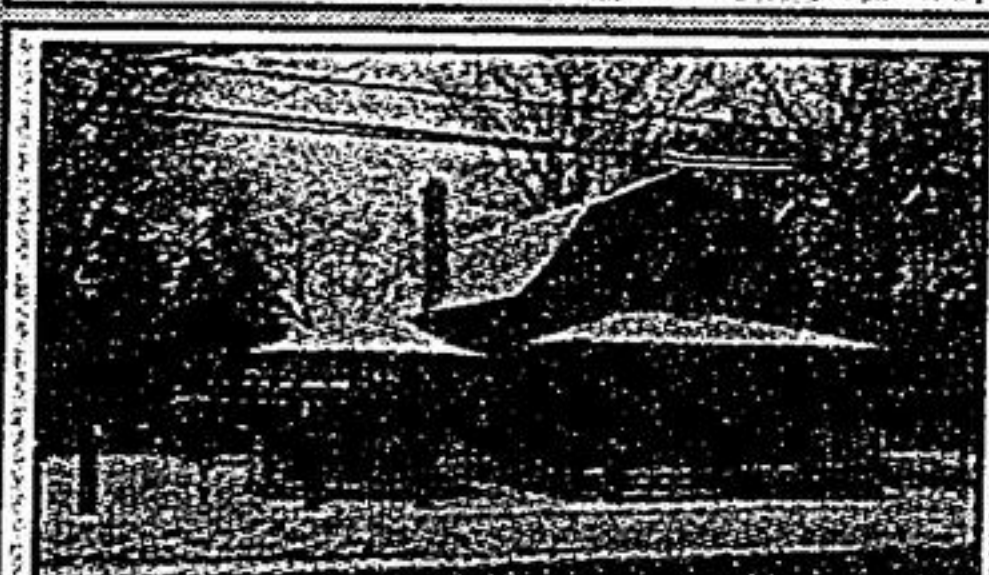
DEAD END STREET! \$322,900
West end of town! Spacious 4 bedroom! Eat-in kitchen! Plus finished basement! 3 baths! Double car garage! Come see!
Call Kim Reesor*, 905-640-1200.



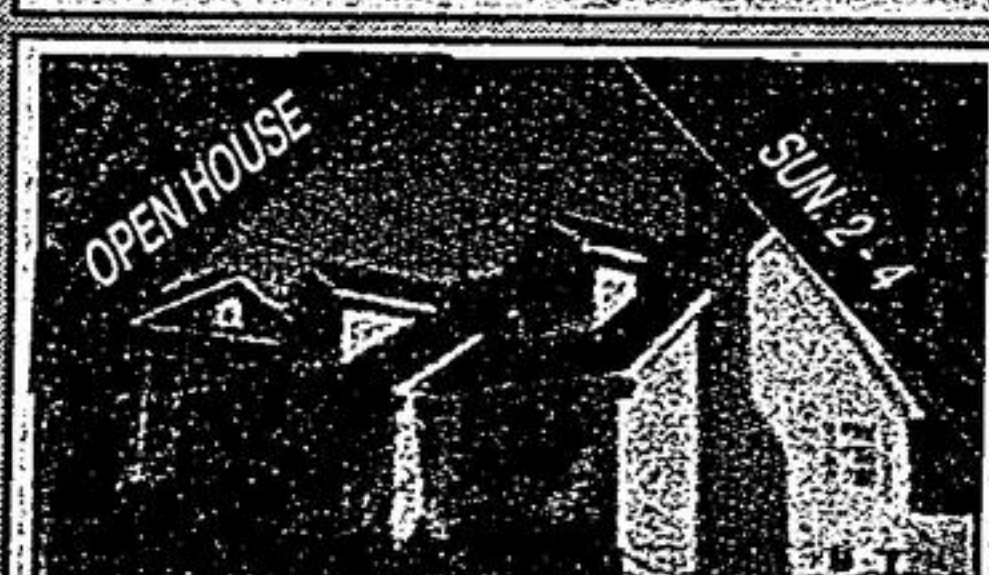
CENTURY HOME! \$469,900
Sought after location! Tastefully renovated thru-out - pine floors, two walkouts, covered verandahs, private lot. Mature trees!
Call Kim Reesor* 905-640-1200.



COUNTRY LIVING!
Raise your family in spacious 3+1 sidesplit almost 3/4 acre. Large kitchen, 2 tier deck, hot tub, sunken living room, separate dining room.
Call Carol Kirkland* 905-640-1200.



\$299,000!
Lovely 2-unit home w/2 car gar + 4-car driveway. Beautiful finishes t/o! Fabulous tile work, hrdwd flrs, potlights, cornice mouldings, exceptional trim work & more!
Call Chris Tancock*, 905-640-1200.



5 ALICE ST. MT. ALBERT
Glorious 4 bdrm. Cape Cod on an exceptional lot! Hardwood flrs, gorgeous tree line st., det. garage, 1/p, great curb appeal!
Call Chris Tancock*, 905-640-1200.



HOT OFF THE PRESS
Great family home with numerous upgrades including furnace, roof, kitchen, bathrooms, flexible closing & more.
To view, call Lynda Sargeant* 905-640-1200.



CLOSE TO STOUFFVILLE!
Custom bilt 3 bd bungalow features hexagon open concept LR & DR • country kit • walkout bsmt! 30 x 40 heated workshop • 1.73 acres with 419 feet frontage!
Call Joseph Gallo* 905-640-1200.



MOST SOUGHT AFTER ST!
This Ballantrae beauty features stone exterior • Custom kit • Fin. sep. entrance into bsmt • 4 car garage • Top quality finishings • Premium lot backs onto forest! Call Joseph Gallo* to view, 905-640-1200.



RARE OPPORTUNITY!
Unique 5 bd custom built home w/2 car garage • 24 acre property w/over 1700 feet frontage w/3 driveways! 40 x 60 heated workshop + much more!
Call for details Joseph Gallo* 905-640-1200.



SOUGHT AFTER NEIGHBOURHOOD
3 bd home on quiet crescent, in "Summerhill Estates" spacious master with his/her w/in's, 4 pc ensuite, w/o bsmt. w/cold cellar.
Call Rhonda Barresi* 905-640-1200.



OFFICE SPACE FOR LEASE
Brand new - 2 units of 800 sq ft with kitchenette + 2 piece, windows galore, tenant has choice of colours. Immediate possession. High traffic area!
Call Ross Gallo*/Adele Gallo* 905-640-1200.



ELEGANTLY APPOINTED!
This quality bilt 2 storey home has a unique layout • w/2 storey ent. open staircase, LR • floor to ceiling windows • large eat-in kit • open to family rm; main floor den + premium lot • 147.64' deep lot • westerly exposure!
Call Adele Gallo* 905-640-1200.



34 BALLANTRAE RD. HWY. 48 N. OF AURORA RD.
Magnificent 3000 sq. ft. brick / stone / stucco 3 car gar. 1-1/4 acres • town water, natural gas, estate subdivision with access to reg forest! Maple kit cupboards, granite countertops, Brazilian cherry hardwood thru-out, immediate possession. Come see & compare. \$898,000.
Call Adele Gallo* or Ross, 905-640-1200.



BEAUTIFUL FOREST!
Quality bilt. bung., premium lot! 3+2 bd., gorgeous maple kitchen, open concept. Professionally fin. basement - sep. ent. ideal in-law! \$839,000.
Call Ross or Adele Gallo*, 905-640-1200.



GREAT VIEW OF LAKE!
3 bd., bungalow, 50' x 168' lot • southerly exposure, sun deck, some updates, \$279,900.
Call Adele Gallo* 905-640-1200.



NEW PRICE! \$299,900
Recently renovated, close to school & park, open floor plan; 5 appliances, lower level family room, brick fireplace, 2 baths; 1 car attached garage.
Call Barry Mitchell* 905-640-1200.



\$949,000
3000+ SQ FT. Custom bilt on 5 acres Vivian Forest + Equestrian Trails. Spectacular Great Room, Family Size Kitchen, Large Formal Dining Room.
Call Barry Mitchell* 905-640-1200.



10 LINCOLNVILLE LANE (BLOINGTON & TENTH LINE)
INVESTMENT PROPERTY!
Wanting acreage? 1.93 acres on 3 road frontages! Updated older home - 4 bedroom / 2 bath. Come see the "on-ground" pool, with deck, weedless garden, & outbuilding. Great to live in or rent out. See / buy with Elaine Kalmbach* 905-640-1200.

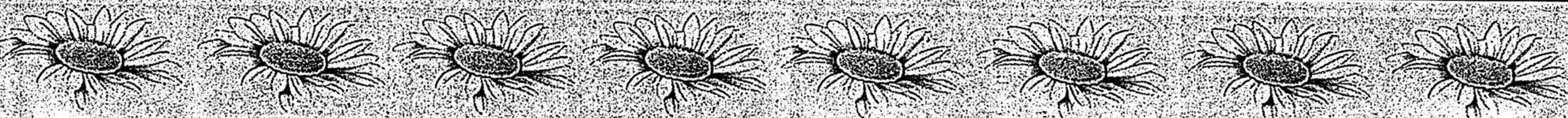


EXECUTIVE PROPERTY REQUESTED
Own an estate property in Whitchurch-Stouffville, Richmond Hill or Aurora? Large home with recent upgrades? Thinking of selling sometime this year? Talk to me FIRST! Call for a confidential evaluation.
Elaine Kalmbach* 905-640-1200. (Not intended to solicit listed properties)



EXEC. BUNGALOW FOR LEASE STOUFFVILLE AREA
• Large landscaped lot • triple garage • open concept • 4 bedrooms • granite, hrdwd, w/out • finished bsmt. • GORGEOUS • PRIVATE • QUIET • BRIGHT & SUNNY.
Call Norma Card*, 905-640-1200.

Outstanding Service... Does Not Cost More



Allard
The Strategy Team.ca

DOMINIQUE ALLARD
JENNIFER ALLARD
(905) 940-4180

ROYAL LEPAGE
REALTY INC.

BRIDLE TRAIL, OPEN HOUSE SAT & SUN 2-4

27 FOXMEADOW LANE.
Fabulous Monarch-built home in Upscale Bridle Trail. Over \$60K of renovations in last 3 years including prof. finished basement (04), high-quality carpeting (04), roof (06); Landscaped front & back with interlock & patio stones. Spacious main floor with sunken living room & private family room. The home is painted in designer colours & is in move in condition! Do visit us on Saturday or Sunday at the open house.
Asking \$585,000

BRIAN MASLOWSKI**
416-234-2424

Sutton
Sutton Group Old Mill Realty Inc. Brokerage

BY APPOINTMENT ONLY - BROOKLIN BEAUTY!

Amazing Premium Lot! 55' x 160' with a Hot Tub! So many upgrades including hardwood floors and oak staircase, finished basement, 3 bedroom + loft, cathedral ceilings, stone shower, alarm, C/Vac, satellite + equipment, and so much more! This home is a 10!! See the virtual tour: www.88house.ca. Make the right move... Call Brian First! 416-234-2424.