

Enhancing Commitment to Service



Lee Milbury
Sales Representative



Kristine Milbury
Sales Representative

In continuing the journey of providing service excellence in real estate, I would like to take this opportunity to announce that Kristine Milbury Searle has joined me in order to continue to improve and increase the quality of service that you deserve. This addition will allow for two licensed real estate professionals to work for you, the homeowner or potential buyer.

Thank you to all of my clients, past and present, and we look forward to enhancing the quality of service we provide and meeting your individual needs.

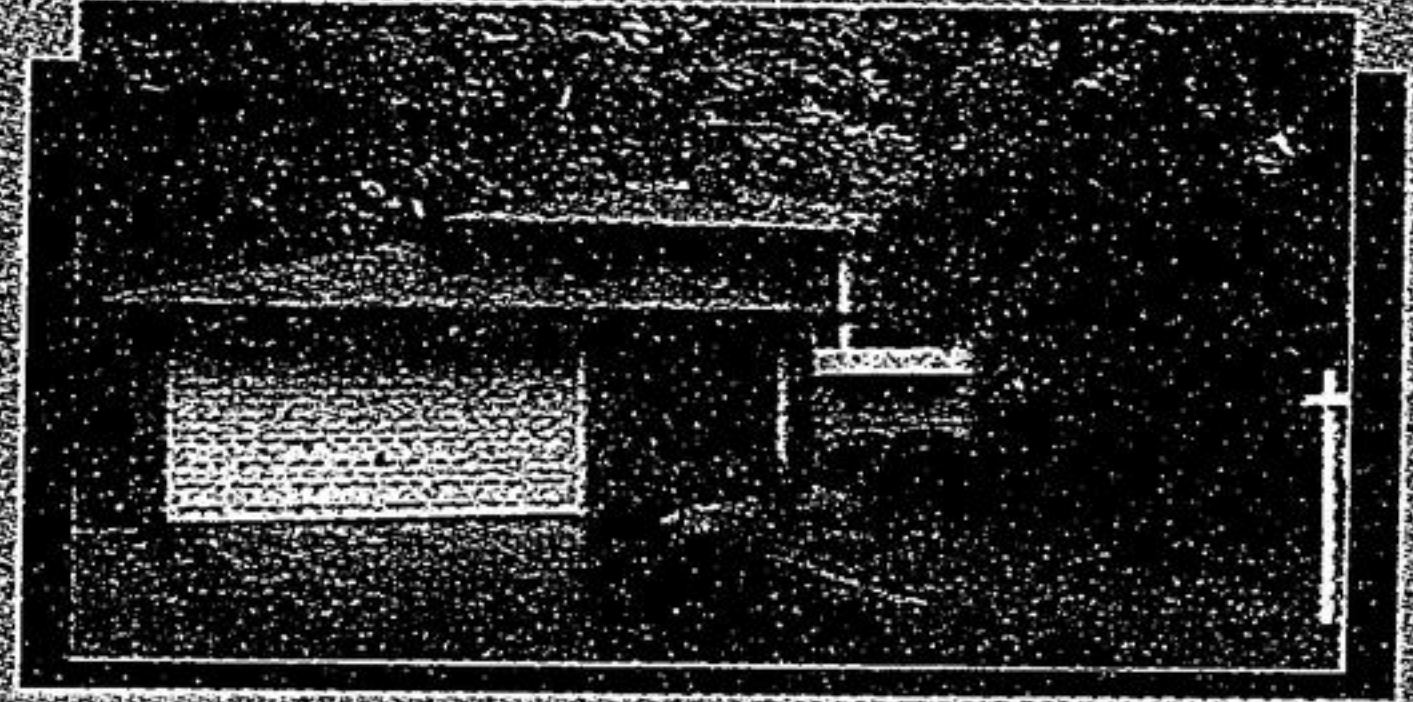
Recent Sales



9 Wentworth Court



16 Wolf Trail Crescent



36 Gainsville Avenue



80 Linchfield Road



277 Main Street



57 Prospectors Drive

Thank you for the opportunity of selling your home. We wish you all the best in your new home.

If you would like a confidential appraisal on your home please feel free to call Lee or Kristine at 905-947-9300

RE/MAX CLASSIC PROPERTIES INC. 141 Main Street, Unionville



"Guiding You Home" Marie Hogan

Sales Representative

905-471-2000 • Cell 416-788-3332

www.mariehoganrealty.com



SUTTON GROUP HERITAGE
REALTY INC./BROKERAGE

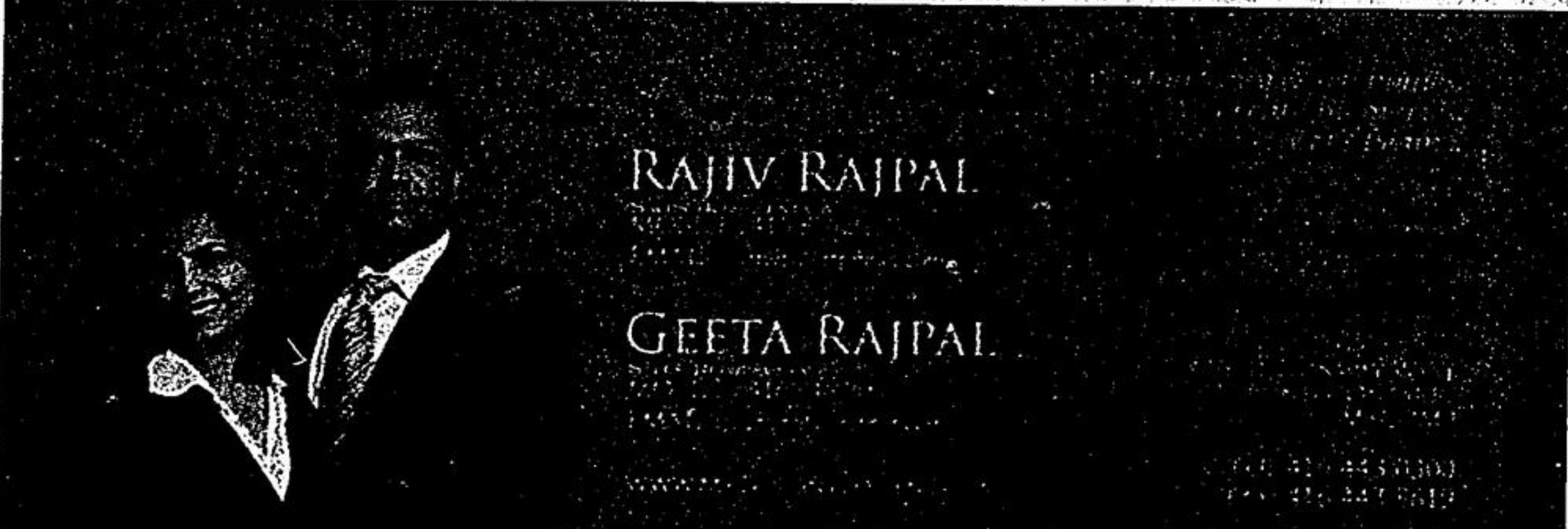
Open House Saturday March 24th, 2-4 pm
SWAN LAKE • 55 THE BOARDWALK WAY #208

* This 1128 Sq. Ft. • 2 Bedroom Home • Shows To Perfection • 2 Large Garage Spaces
MLS# N1089097



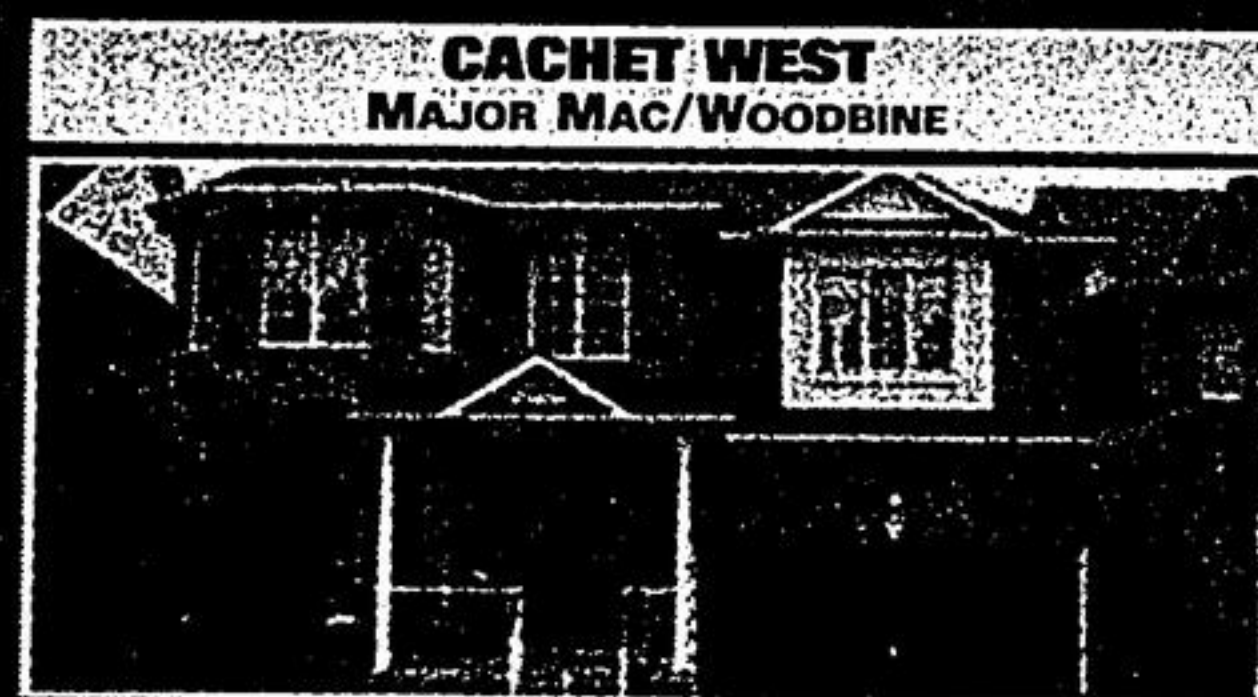
Open House Sunday March 25th, 2-4 pm
64 REGINALD CRES.

- * Affordable
 - * Well Located
 - * 7 Good Sized Rooms
 - * Town Home
- MLS# N1088779**



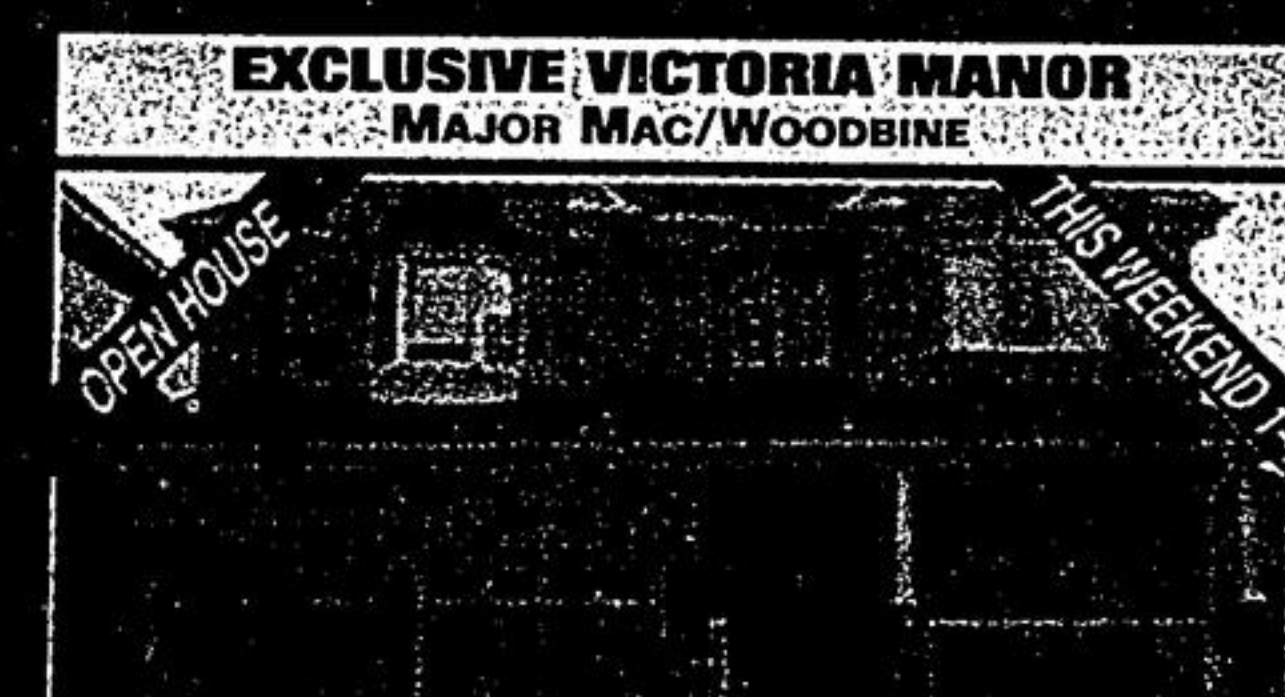
RAJIV RAJPAL

GEETA RAJPAL



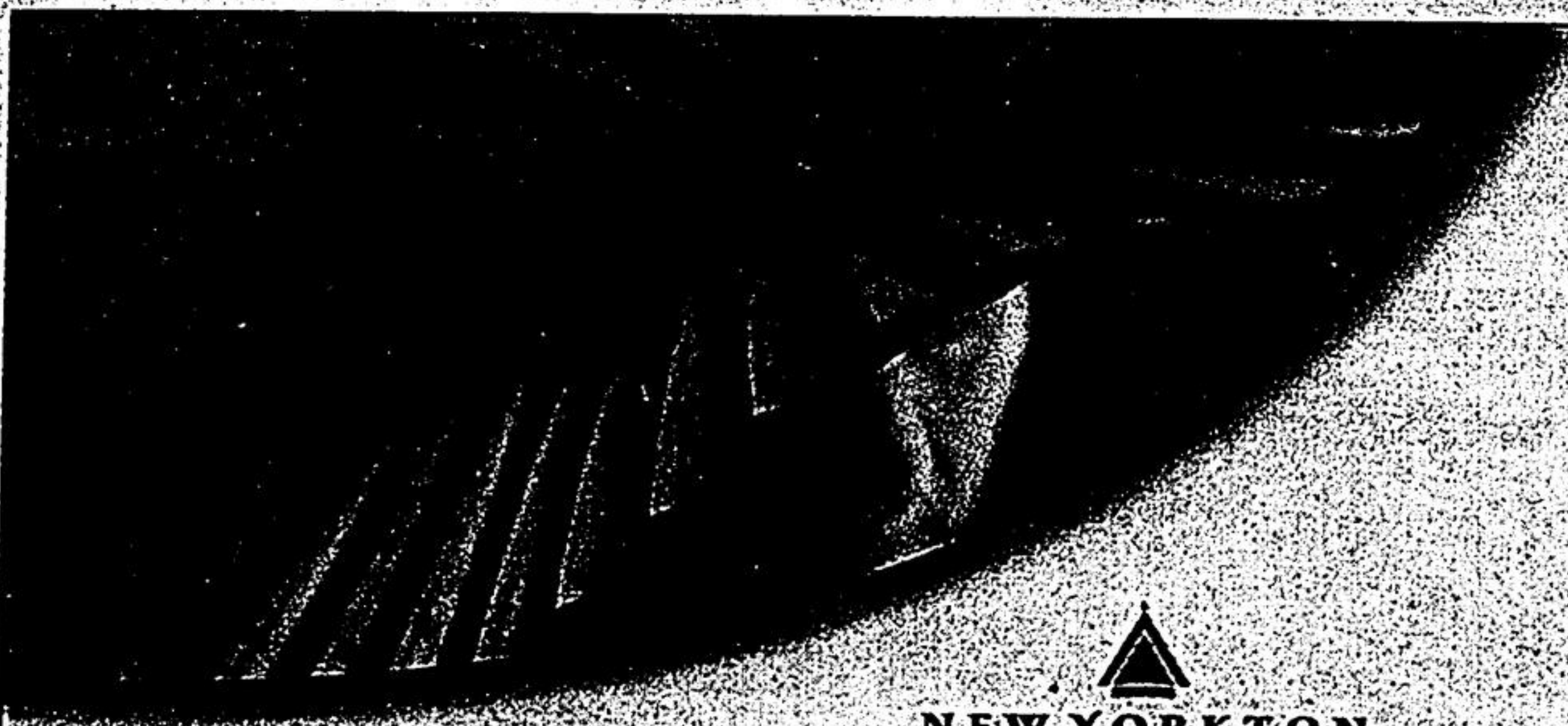
CACHET WEST
MAJOR MAC/WOODBINE

Wow! This is called value for money! Just move into this beautiful bright home. Approx 2700 SF. Loaded w/ upgrades. Fin. Bsmnt. Interlocking Landscaped. Hardw. Flrs & Lots More. To view this property call us @ 416-448-9300 www.MtTorontoAgent.com



EXCLUSIVE VICTORIA MANOR
MAJOR MAC/WOODBINE

Beautiful home in Victoria Manor sought after loc. next to 90th corner premium. Approx 2 yrs new. A COZY HOME on a friendly cres in a great neighbourhood. Approx 2500 SF. Hardw. Flrs. Many upgrades. Must See! Call us 416-448-9300 www.MtTorontoAgent.com



Singles & Brownstone Town Manors from the \$400's



Nestled against scenic vistas of the York Downs Golf & Country Club, New Yorkton offers exquisite Singles and Towns. Expect the height of fine living, with 9' ceilings, butler's pantry, designer fireplaces, sumptuous ensuites and double car garages. Live in a gorgeous master planned community, just steps from historic Main Street Unionville.

OPENING SATURDAY MARCH 24TH

Call 905.887.9950 or visit kylemorecommunities.com to register.

4476 16th Ave, Unionville.

*See sales representative for details. Price and specifications may change. E.O.&E.

