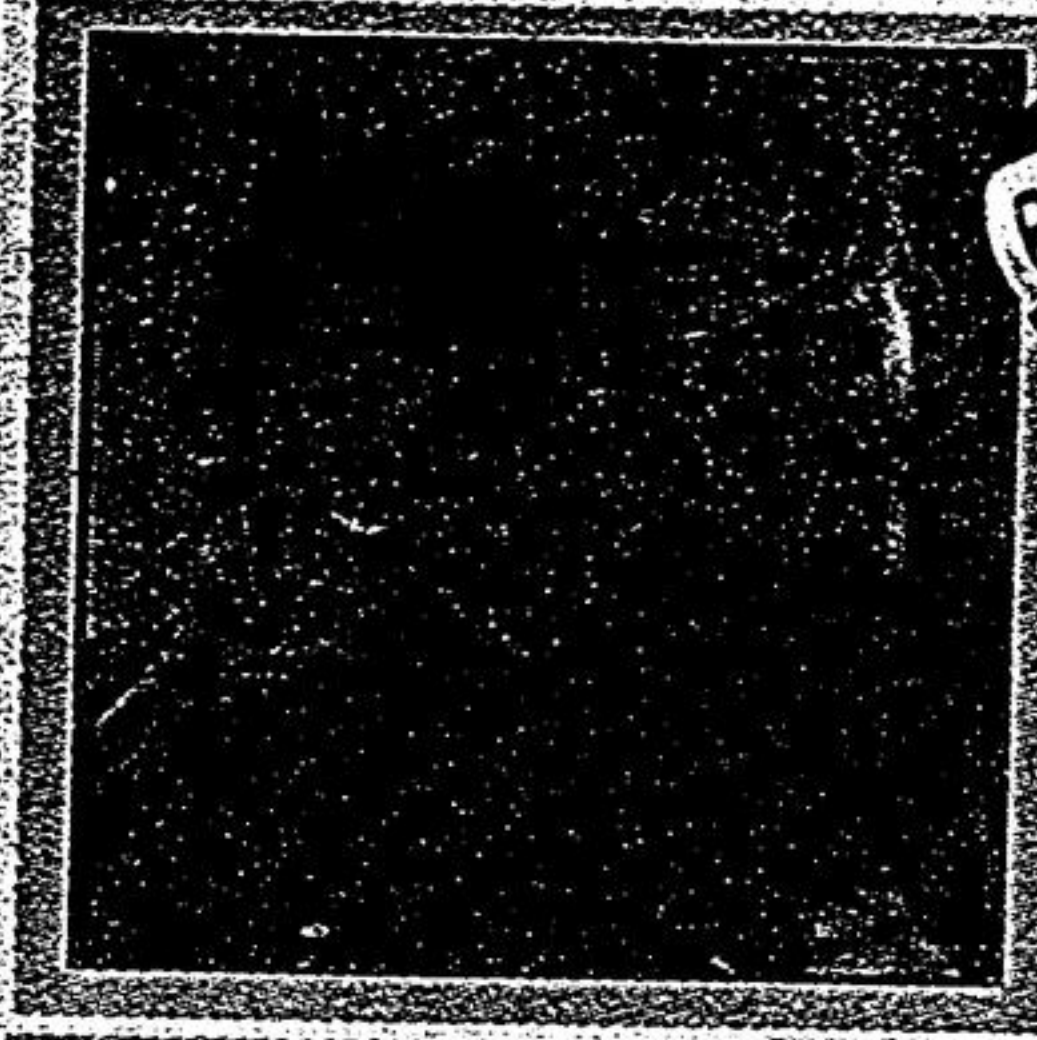


RE/MAX CLASSIC PROPERTIES - RE/MAX CLASSIC PROPERTIES - RE/MAX CLASSIC PROPERTIES



**LESLEY & ART
DIVERS**
Sales Representatives
(905) 947-9300

RE/MAX
CLASSIC PROPERTIES

14 HARPER HILL ROAD ~ \$1,149,000



Custom Bungalow Backing to Angus Glen Golf! Spectacular Landscaping Front & Rear! Custom Decks plus Hot Tub off Master Bedroom! 2-Storey Great Room - Open Concept off Kitchen! Premium Lot with 85 Ft across the back!

97 ANGUS GLEN



60'x148' Premium Lot!
West Village Model!
Phenomenal Landscaping!
Stunning Maple Flooring on 2 Levels!
Upgraded Gourmet Kitchen!

72 DANCER'S DRIVE ~ \$384,900



Best value in Angus Glen! 2275 SF!
2nd Floor Family Room 19'x20'!
Quiet Private Location!
Westerly Backyard!
Double Car Garage!
Newer Central Air Conditioning!

VIEW AT: WWW.THEDIVERS.CA

RE/MAX CLASSIC PROPERTIES - RE/MAX CLASSIC PROPERTIES - RE/MAX CLASSIC PROPERTIES

Elegant Brownstone Living in the Heart of Unionville

Kylemore Communities Celebrates Grand Opening of New Yorkton Sales Centre

On March 24, Kylemore Communities will celebrate the Grand Opening of the new Sales Centre for their luxurious New Yorkton Community.

Surrounded by premier golf courses and minutes from historic downtown Unionville, New Yorkton offers a one-of-a-kind enclave of designer-ready brownstone town manors from 1,875 to 2,530 sq. ft. and 45-foot singles from 2,700 to 3,500 sq. ft. With prices starting in the mid-\$400,000s for the town manors, this community is the perfect choice for families, young professionals, and empty nesters looking to downsize.

Downsizing doesn't mean you have to sacrifice luxury. The town manors offer spacious interior featuring large, open kitchens with breakfast bars and islands, Great Rooms, media rooms with extra storage, elegant dining rooms, and choice of main floor or second floor laundry rooms.

"New Yorkton really provides a near-perfect solution," says Kylemore Communities President Patrick O'Hanlon. "What buyers are telling us is that the town manors at New Yorkton allow them to not only stay in the community but to get the same quality, design, and craftsmanship that they had in their larger family homes."

If you prefer a larger home, stunning singles on 45-foot lots are available from the mid-\$700,000s ranging in size from 2,650 to 3,450 square feet.

Spectacular features and finishes include 9-foot, optional coffered and cathedral ceilings on the main floor, optional two-sided fireplaces, his and hers walk-in closets, and butler's pantries for entertaining. Some models even offer Juliet balconies with French doors off the master bedroom. All Town manors also include double car garages. All this adds to the feeling of lux-



ury that makes the community of New Yorkton an address of distinction.

What really set Kylemore Communities apart is their customization program. Working with their team of designers, purchasers are able to personalize their homes to meet their individual needs.

Adjacent to both the York Downs and Angus Glen golf courses and right next door to a world-class community centre, New Yorkton is conveniently located close to highways 407, 404, and 401. There is also a GO Transit station nearby. Within the community itself you will find wide, tree-lined boulevards, parks, and a quaint shopping plaza complete with the ever-popular Village Grocer. Enjoy living just steps from historic Main Street Unionville with its heritage storefronts and charming old-world ambience.

Kylemore Communities is the renowned builder of Angus Glen, a master-planned community in Markham, and has more than 20 years of collective leadership with over 10,000 new homes built across North America. Their townhouse communities have won numerous awards recognizing Kylemore's attention to detail.

The Sales Office is located at 4476 16th Avenue (northwest corner of Kennedy and 16th Ave.). Hours are Monday to Thursday 1 pm to 7 pm; Saturday, Sunday and Holidays 11 am to 6 pm; closed Fridays.

For more information call 905-604-1800 or visit www.kylemorecommunities.com

Home of the Week ~ 20 Raeview Drive Exclusive Sleepy Hollow Estates

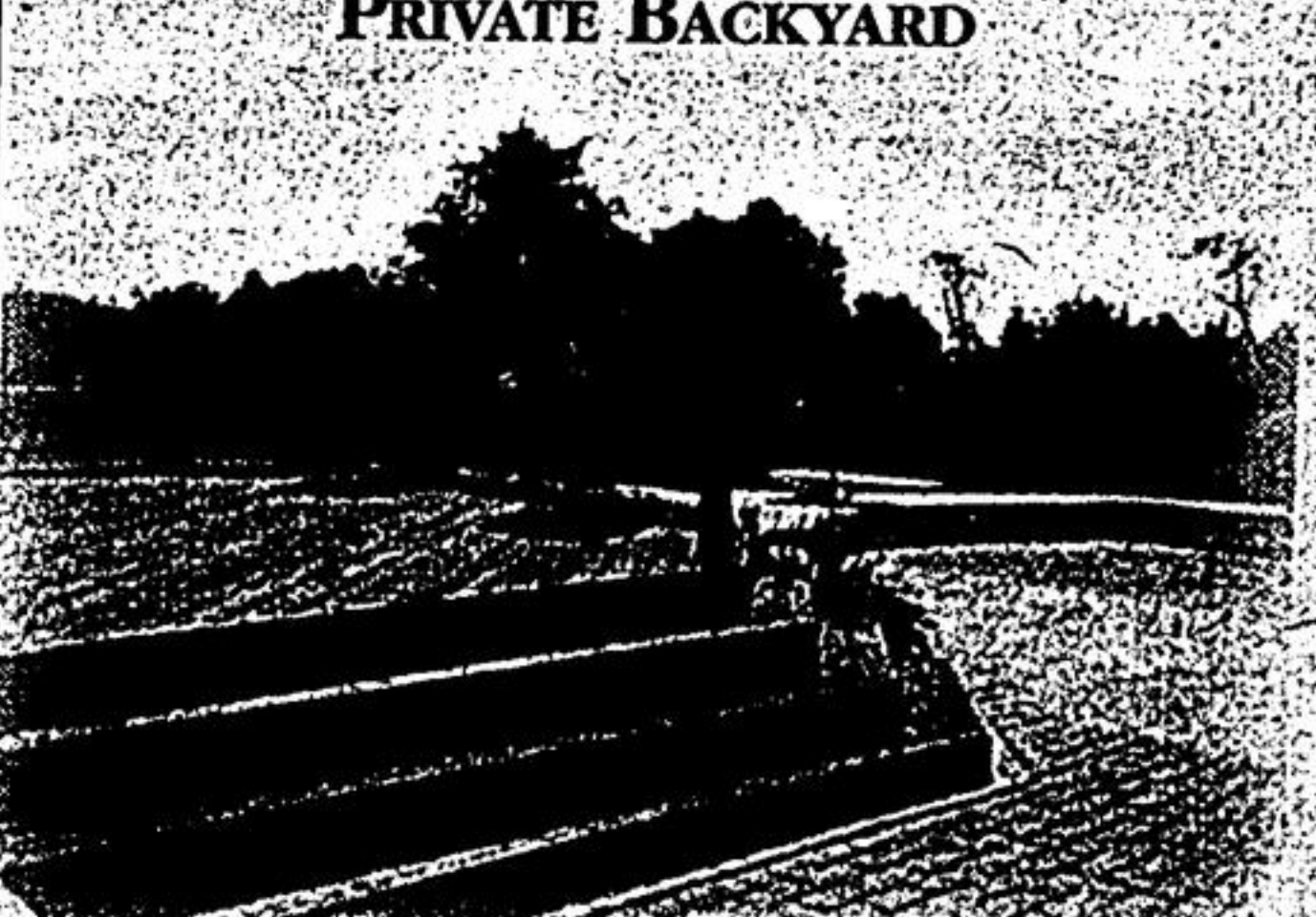
Open House
Sunday 2 to 4pm



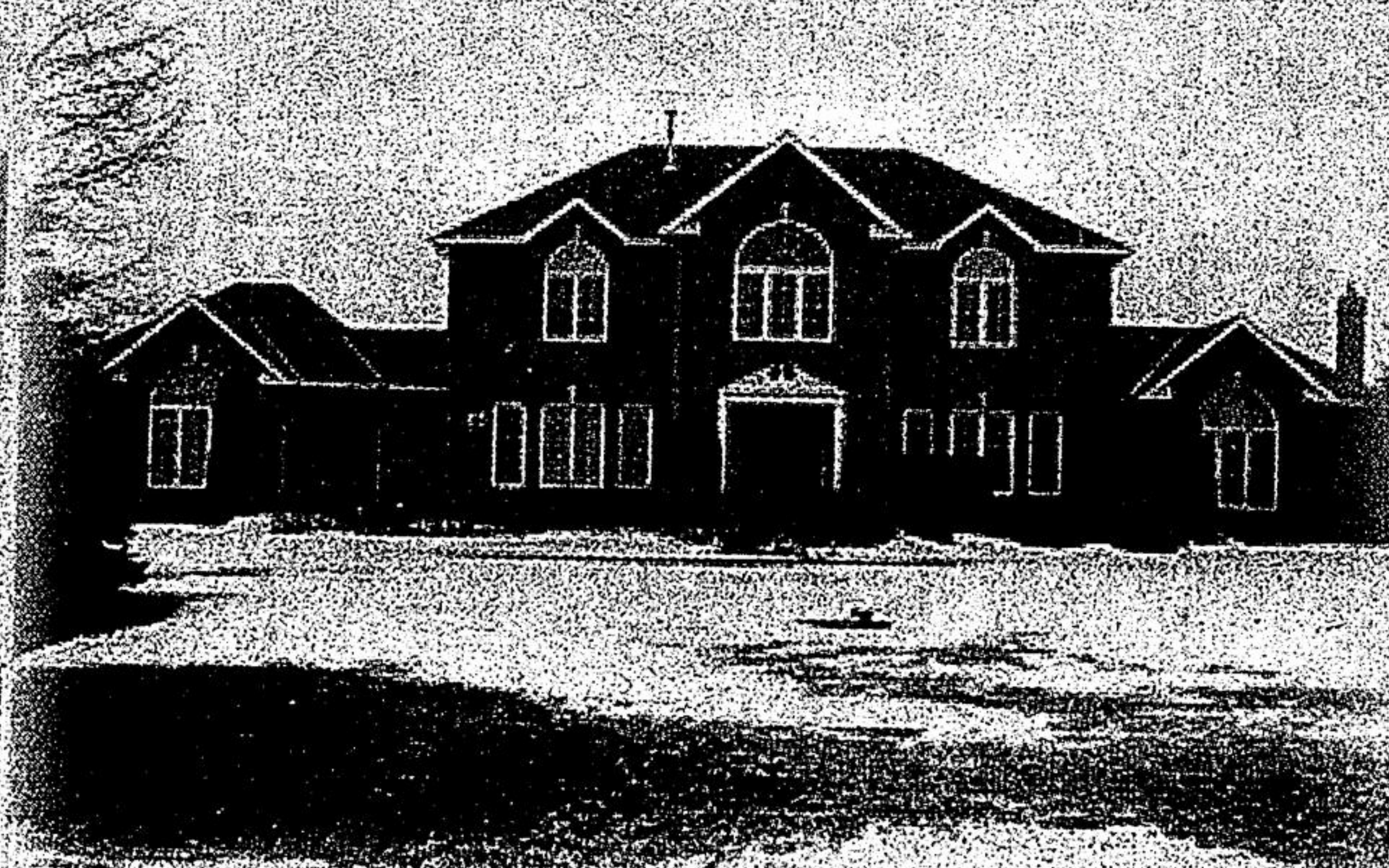
INGROUND POOL



PRIVATE BACKYARD



TRANQUIL SETTING



Custom Built Approx 3800 sq. ft. Estate Home
Premium ONE ACRE Lot in Stouffville
Resort Style Private Backyard with
Inground Pool, Hot Tub, Custom Deck & Patio
Backs onto scenic Sleepy Hollow Golf Course
3 Car Garage ~ 2nd Service Stairs to Basement
Great Deal at \$778,000



YOUR VERY OWN PARKETTE



ROYAL LEPAGE

YOUR COMMUNITY REALTY
BROKERAGE

Independently Owned & Operated

Rita Chemilian Broker

905-940-4180

FREE RECORDED MESSAGE 1-888-806-1062 ext. 7220