

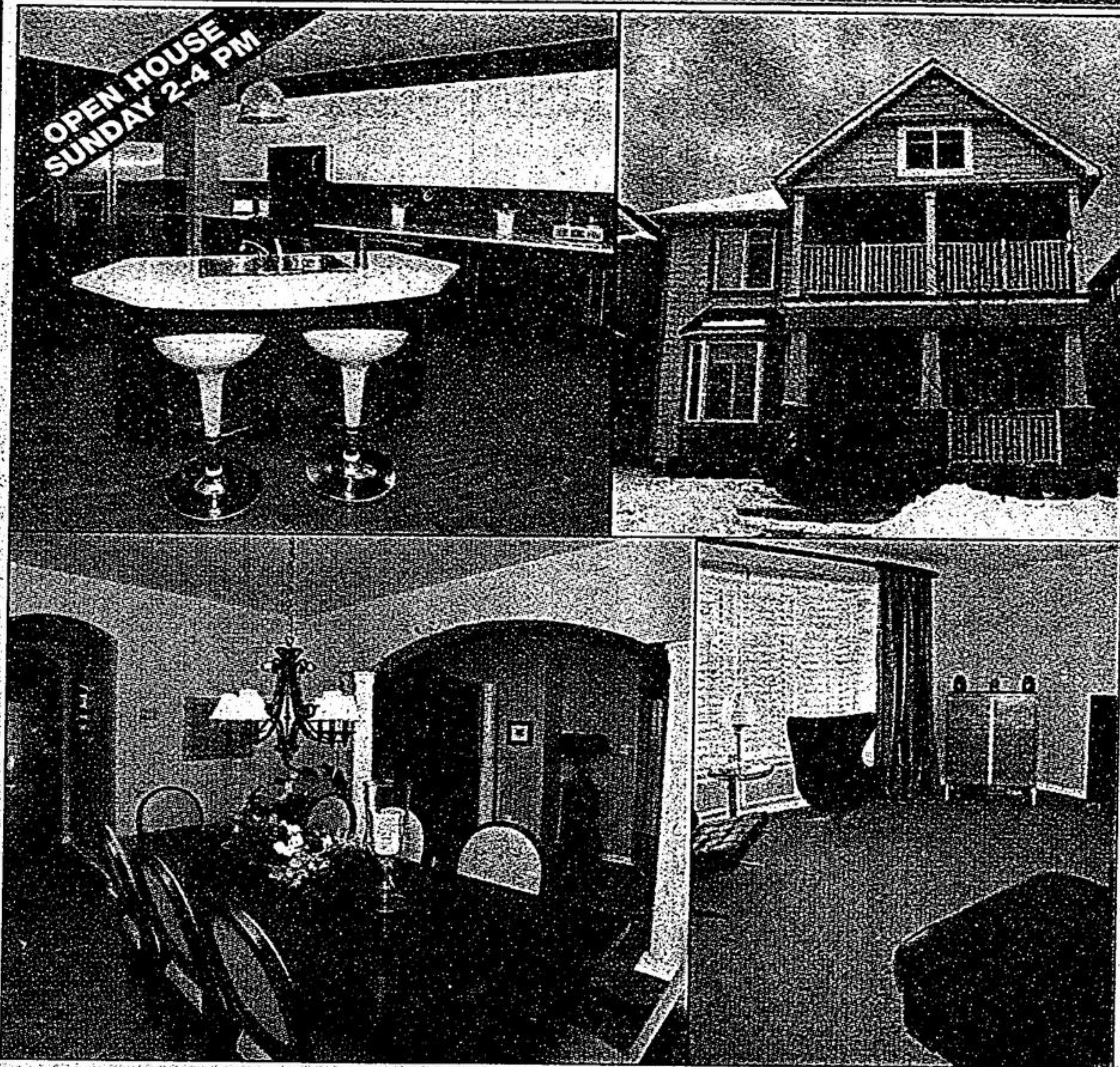


MOVE UP TO THESE HOMES AND "SYLVIA HOUGHTON" WILL BUY YOUR HOME FOR "C-A-S-H" FOR "C-A-S-H"

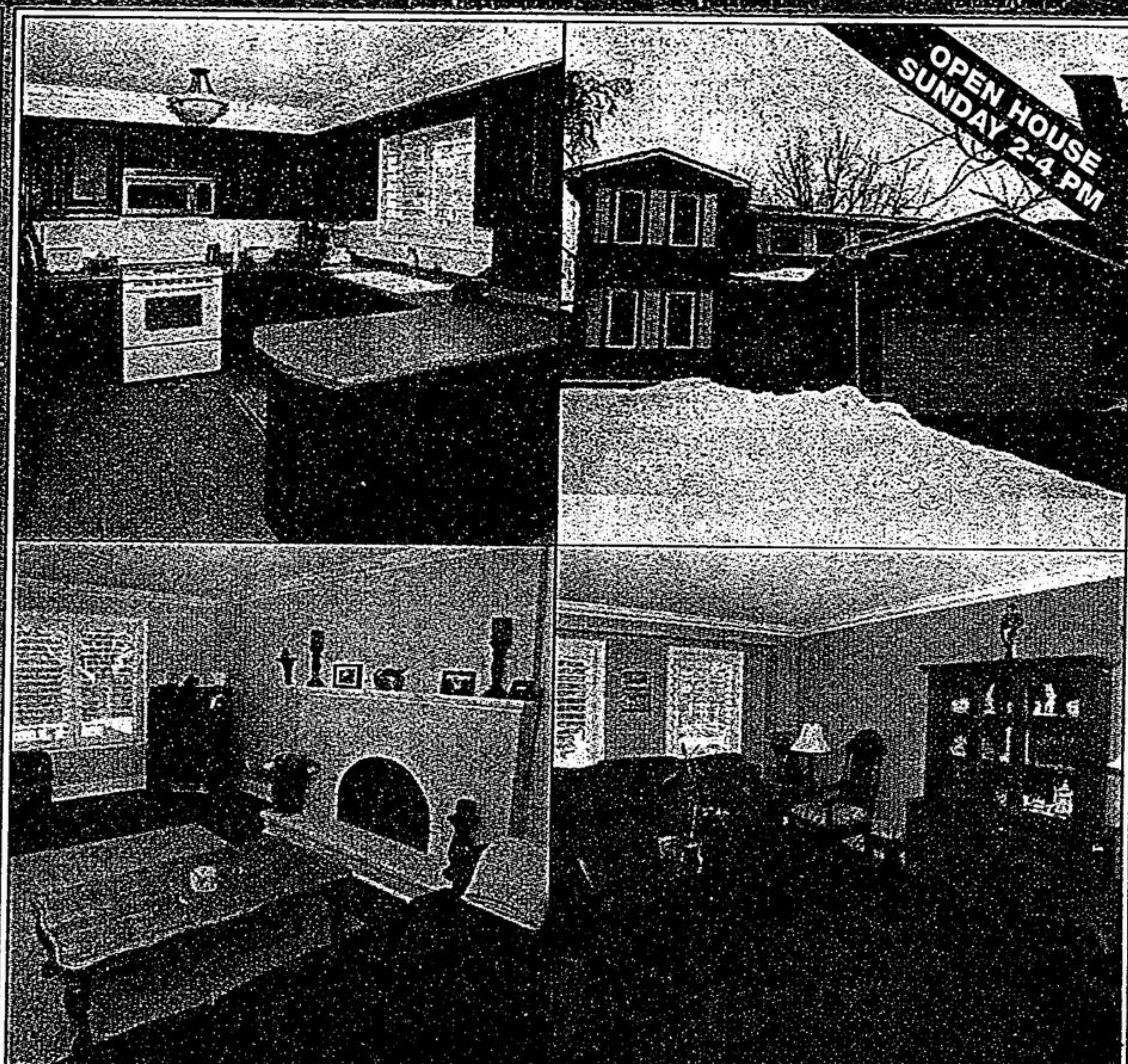


MOVE UP TO THESE HOMES AND "SYLVIA HOUGHTON" WILL BUY YOUR HOME FOR CASH

MOVE UP TO THESE HOMES AND "SYLVIA HOUGHTON" WILL BUY YOUR HOME FOR CASH

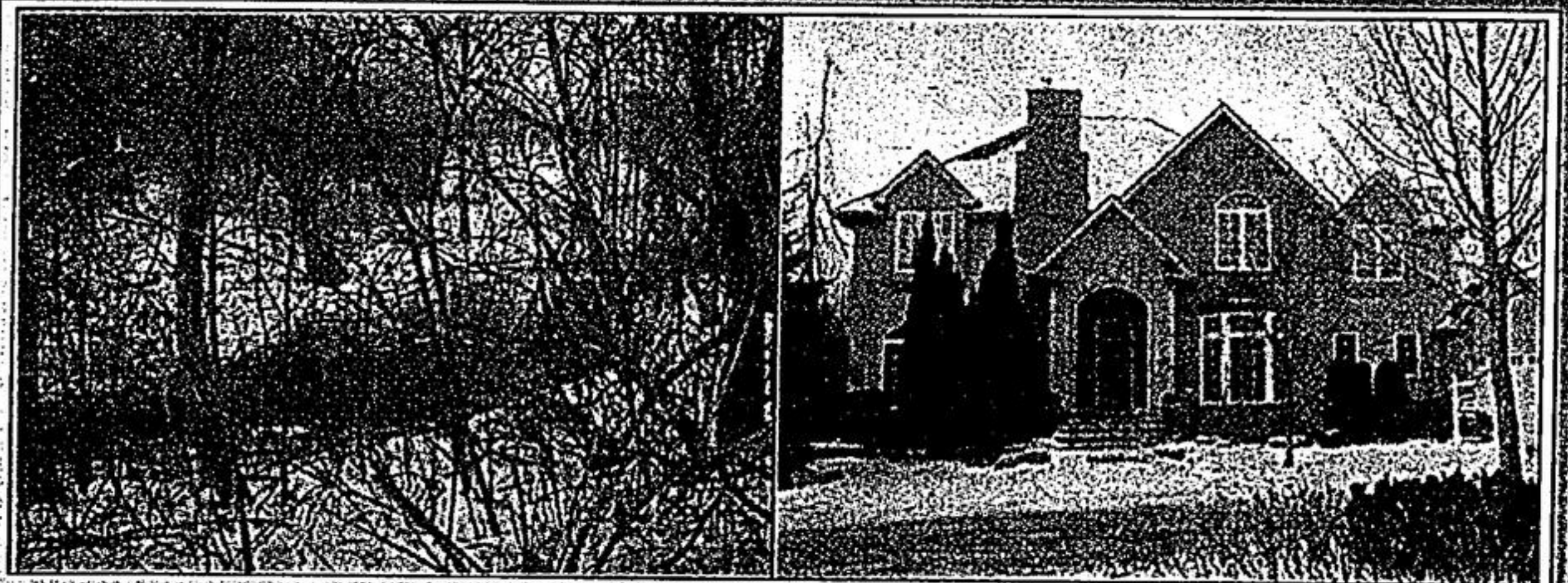


"ART SHOPPE" ON 9 BITTERSWEET - \$458,800 - ATTACHED GARAGE
 Approx 2500 sq ft of luxury. The 'Roseville' model with hardboard exterior. \$25,000 in upgrades. Butlers pantry in kitchen, gas fireplace in family room. Diagonal hardwood plus broadloom. 4 bedrooms, 3 washrooms complete the picture.
 Call Sylvia Houghton* & Dave Houghton*, 905-947-9300.



46 EMELINE CRES - BETTER THAN NEW - \$537,000
 Wooten Way N. off Fincham. Absolutely fabulous, upgraded throughout, 4 bedroom exec home. Designer decor - newer windows, roof, furnace - hardwood on main & 2nd floor, professionally finished basement, upgraded kitchen, California shutters. Must see.
 Call Sylvia Houghton* & Katherine Morgan*, 905-947-9300.

YOUR HOME GUARANTEED TO SELL WITHIN "88 DAYS" OR "SYLVIA HOUGHTON" WILL BUY IT FOR "C-A-S-H"



MOVE UP TO 'THE' ADDRESS - \$1,950,000
 5 Old Ivy Lane situated in a ravine setting, 4 estate homes in all in this exclusive enclave. 4 + 1 bedrooms, 5 washrooms, granite, hardwood, pot lights, rosewood, 8 built-in appliances. High end exclusive inclusions throughout. Call for your personal viewing on this magnificent home. Call for details Sylvia Houghton*, 905-947-9300.



12930 MCCOWAN RD. - \$1,048,000
OWN YOUR OWN RESORT
 McCowan Rd. south of Bethesda. Stunning 7 acre park-like setting for this captivating colonial home which has been lovingly cared for. Tennis court, swimming pool, ponds for fishing & skating & guest chalet on property.
 Call for details Sylvia Houghton*/ Katherine Morgan*, 905-947-9300.



BALLANTREA 'GOLF & COUNTRY CLUB' - \$517,000
 Grand Cypress model with approx \$50,000 in upgrades. 5 appliances, granite countertop, hardwood floors. 2 car garage with room for golf cart. 2065 sq ft. A definite must see.
 Call Sylvia Houghton*, 905-947-9300.



UNIONVILLE BUNGALOW!! - 114X158' LOT - \$729,000
 Upgraded & updated bungalow at 26 Oakcrest Ave!! Features a custom ceiling kitchen!! Hardwood floors, open concept, fireplace & thousands spent on landscaping!!
 Call Sylvia Houghton*/ Sherry Hayes*, 905-947-9300.



84 EDWARD JEFFREYS AVE. - CHOICE HOME - \$538,000
 Walk to school & parks, 3000 sf upgraded Great Gulf home, 4 bedrooms + computer niche & main floor library, separate side entrance & 2nd set of stairs to bsmt. Gleaming hrdwd flrs on mn. 2 walk-in closets in master.
 Call Sylvia Houghton*/ Katherine Morgan*, 905-947-9300.



SEEING IS BELIEVING (KENNEDY/CASTLEMORE) - \$468,800
 4 lge bdms plus computer area, 4-pce ensuite. Huge bat-in kit w/centre island open to mn flr, fam rm w/gas fp, comb liv/din w/hrdwd. Mn flr office w/hrdwd, mn flr laundry w/gar access to bsmt, parking for 3 cars. "Beautiful". Call Derek Houghton*, 905-947-9300.
 www.derekhoughton.com