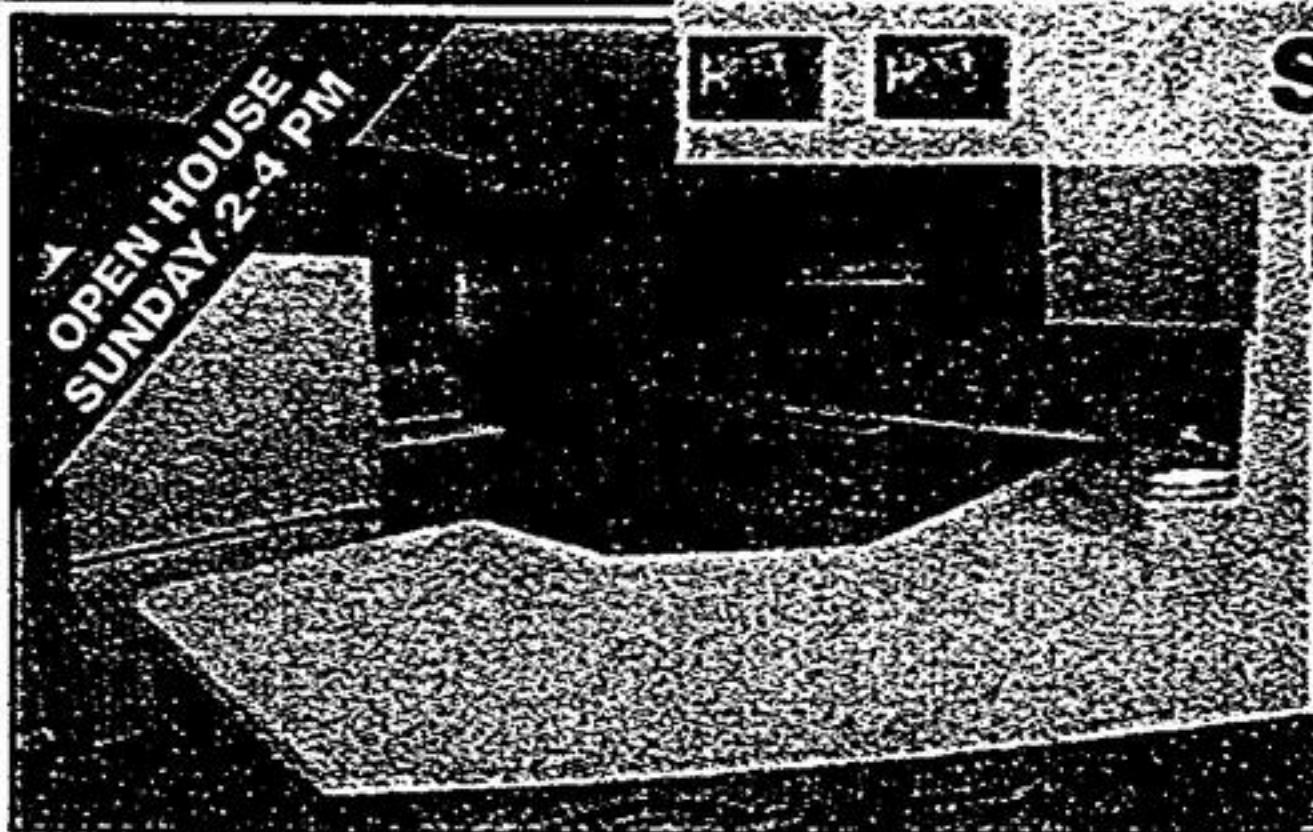


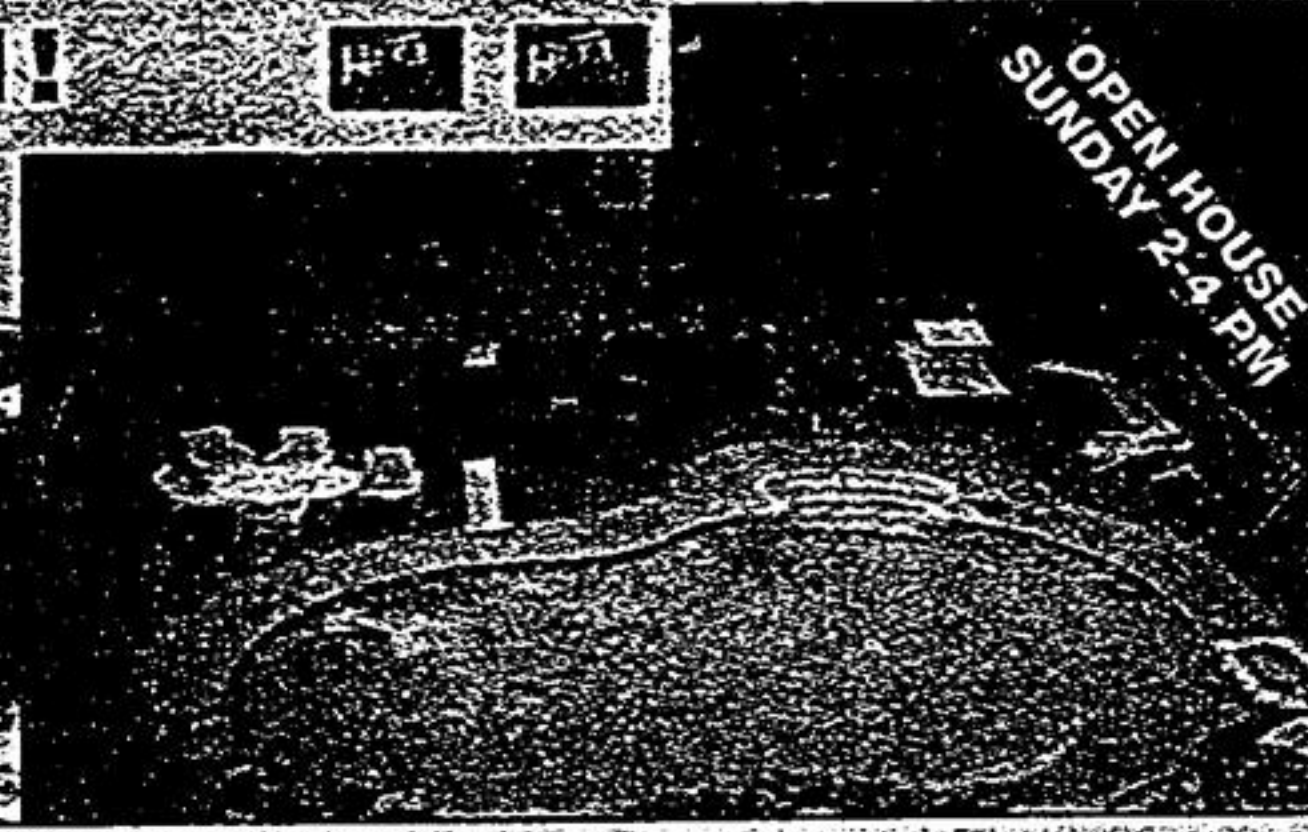
SUMMER'S COMING ~ SPLISH! SPLASH!



22 FELTHAM RD., 163' LOT
~ \$467,000

Raymerville South & Beck Dr. 4 bedroom executive home with Corian counters, walk-in pantry, main floor family room, private treed back yard, beautiful double tiered cedar deck. Great location, walk to schools & parks. See you Sunday.
Call for details Sylvia Houghton*/ Katherine Morgan*, 905-947-9300.

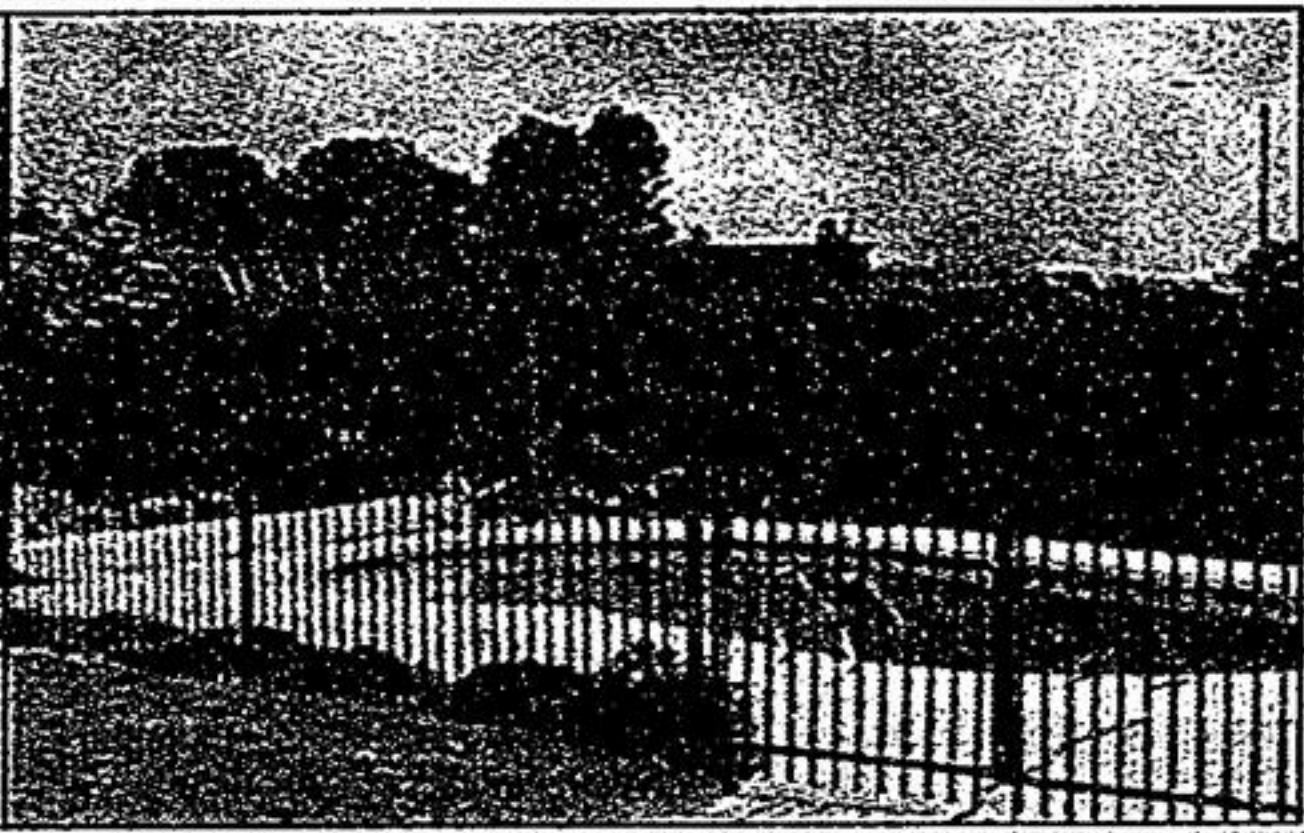
CH 201



37 SPRAGG CIRCLE - MARKHAM VILLAGE, 139 FT LOT
~ \$385,000

With heated inground pool, 4 + 2 bedrooms, separate living/dining rooms, walkout from kitchen. Main family room with fireplace. Finished basement. Many upgrades.
Call for details Sylvia Houghton* & Dave Houghton*, 905-947-9300.

CH 201



187 JOHN BUTTON BLVD., PREMIUM LOT
~ \$587,000

Fabulous lot & pool in this "Fram 2000" 4 bedroom executive home with 9 ft ceilings, upgraded French country kitchen, newer windows, roof - professionally finished basement, +++ walk to French Immersion, Buttonville and Unionville High
Call for details Sylvia Houghton*/ Katherine Morgan*, 905-947-9300.

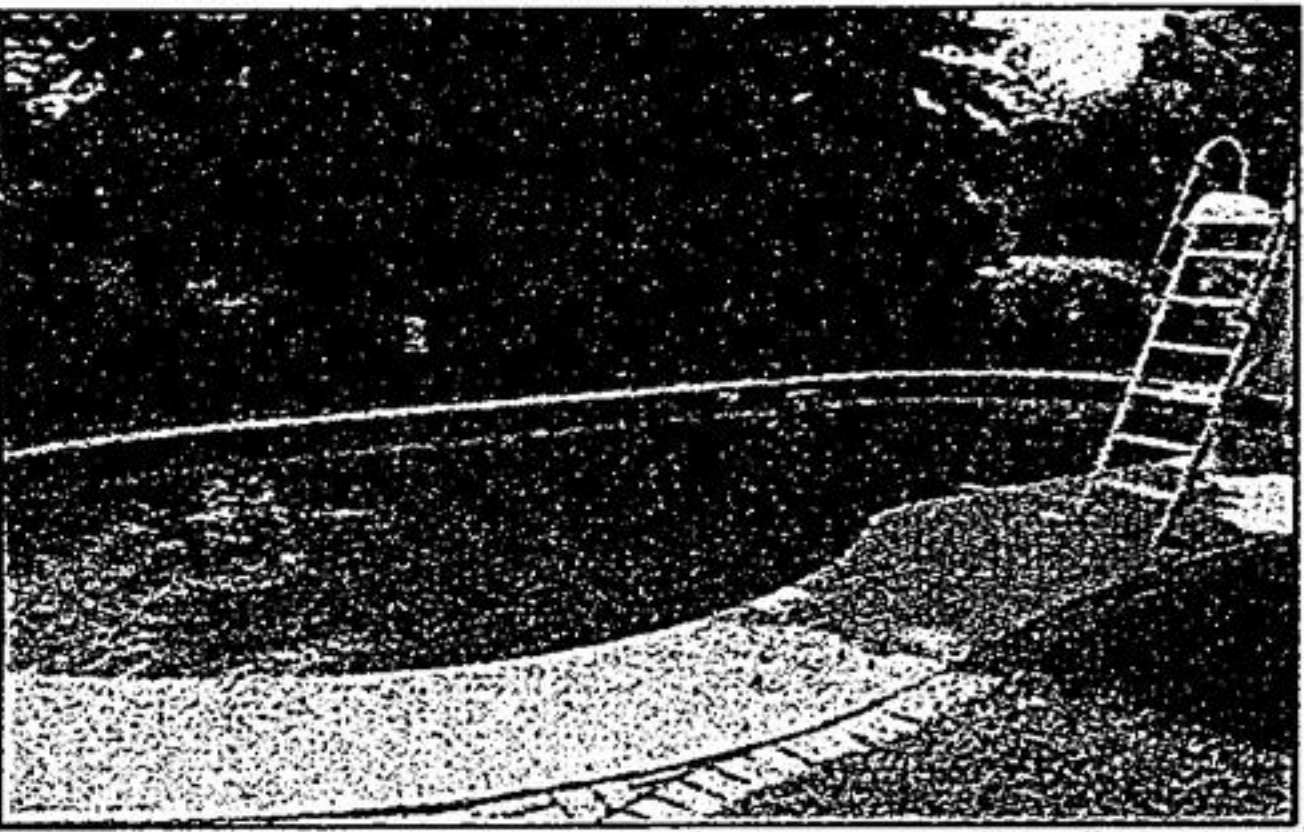
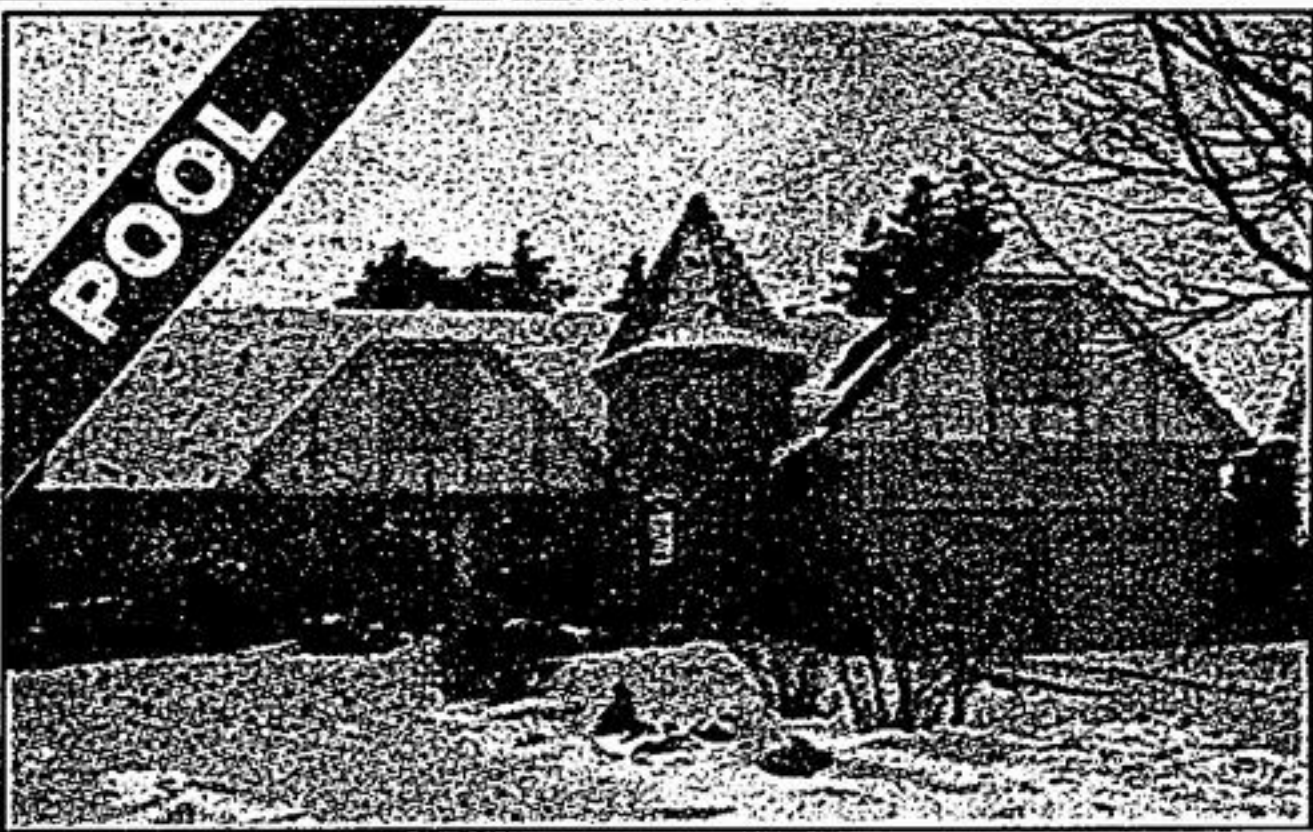
CH 201



THIS HOME HAS IT ALL!
~ \$587,000

4 + 1 bedrooms, professionally finished basement, formal living/dining room with fireplace. Exquisite hardwood floor. An amazing decorator's home complete with fabulous lot and inground heated pool.
Call for details Sylvia Houghton*, 905-947-9300.

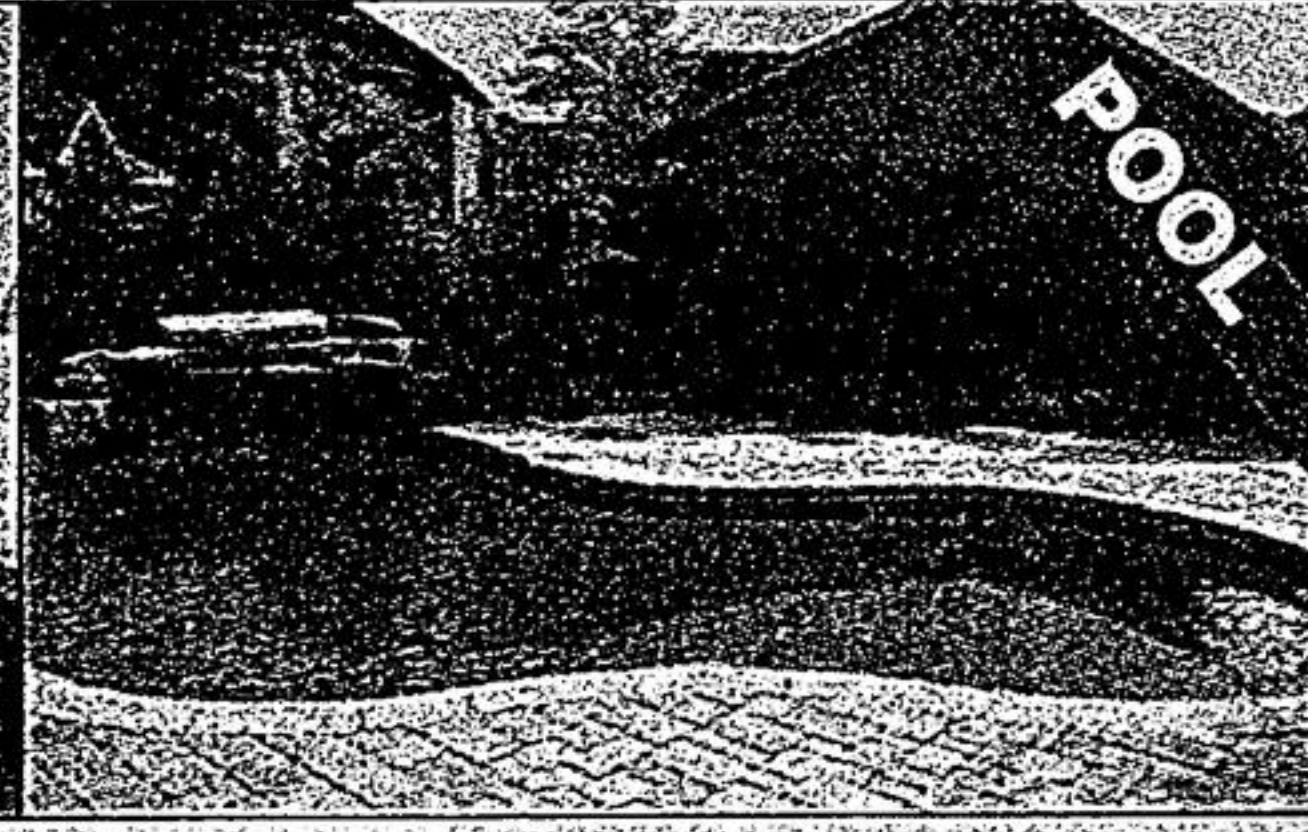
CH 201



'ONE OF A KIND' ON PRENTICE
~ \$787,000

5 + 1 bedrooms, 5 washrooms, finished basement, formal living/dining, family room with stone fireplace, greenhouse kitchen, 1992 addition, quality customized home. Fabulous inground pool, 3 fireplaces. Many more extras.
Call for details Sylvia Houghton*/ Katherine Morgan*, 905-947-9300.

CH 201



ANGUS GLEN - 3 CAR GARAGE
~ \$1,020,000

5 + 2 bedrooms, 5 baths, private balcony overlooking 'Golf Course'. Formal living/dining, family sized kitchen with walkout to pool. Hardwood floors on main level + library. Professionally finished basement, 3 car garage.
Call for details Sylvia Houghton*, 905-947-9300.

CH 201

MOVE UP TO THESE HOMES AND "SYLVIA HOUGHTON" WILL BUY YOUR HOME FOR "C-A-S-H"



8 STANDISH CRES. "BLUE RIBBON"
~ \$488,800

Generous serving of quality in this 4 bedroom executive home in sought-after Markham neighbourhood. Custom kitchen, upgraded bathrooms, newer roof & windows, hot tub, \$\$\$ Landscaping. Walk to schools and parks.
Call for details Sylvia Houghton*/ Katherine Morgan*, 905-947-9300.

CH 201



LOOKING FOR THAT DREAM HOME ~ \$767,000
This is it! 4+1 bdrms, 4 washrms. Formal liv/din. Wrought iron staircase open to bsmt. Gas fireplace in family room plus library with French doors, hrdwd, pot lights. An amazing \$60,000 kitchen. Turn key appointed!
Call Sylvia Houghton* today, 905-947-9300.

CH 201



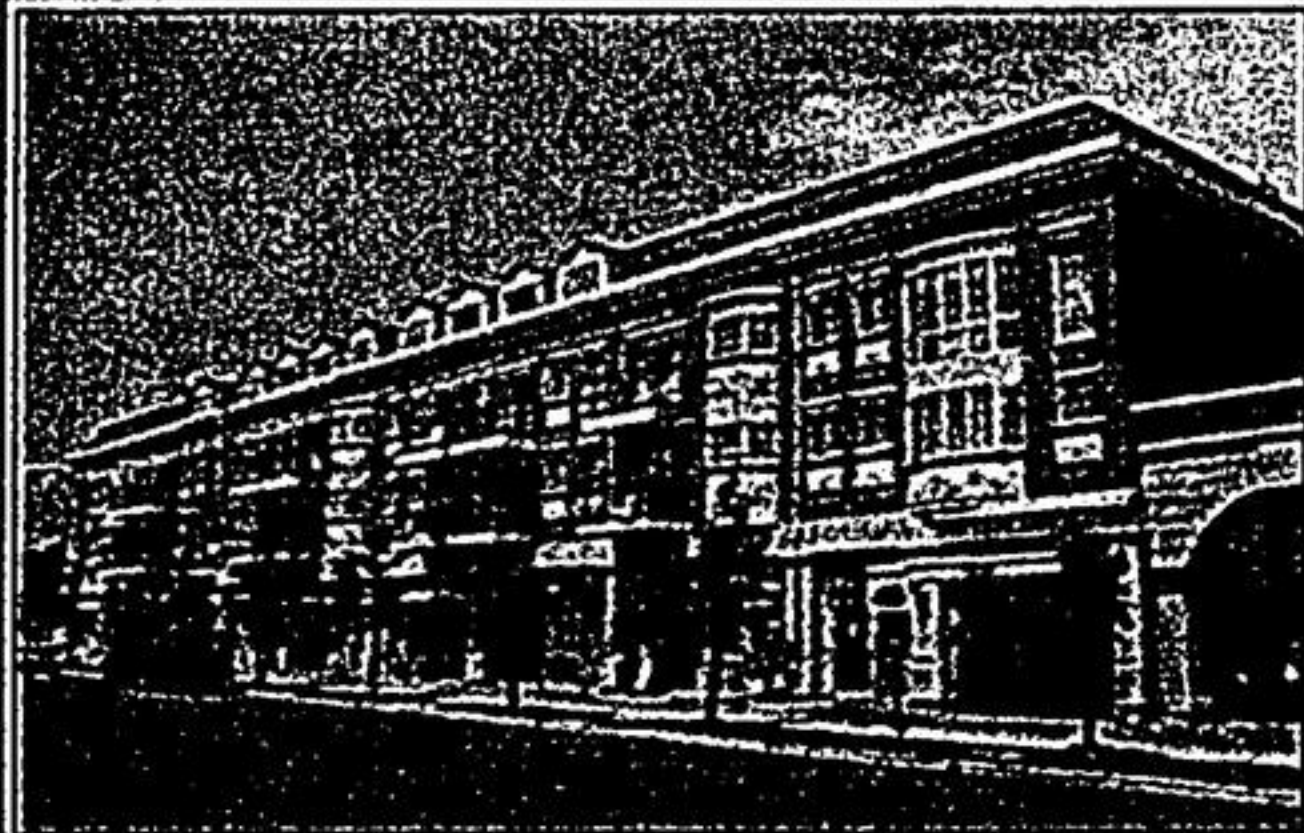
16TH AVE/NORMANDALE ~ \$645,000
Great road, great home, super location, 4 bedrooms, finished basement & main family room with fireplace. Walkout to deck from kitchen, flagstone entrance. Minutes from Main St. Unionville.
Call Sylvia Houghton*, 905-947-9300.

CH 201



UNBELIEVABLE ~ ANGUS GLEN ~ \$428,800
Stunning end-unit features Brazilian cherywood in liv/din/fam/mst bdrm & hallway. Beautiful eat-in kit w/granite & walkout to lge deck, mn flr fam rm w/gas fp, prof fin bsmt w/pot lights, gas fp & 2-pce wshrm, 2 car gar & much more.
Call Derek Houghton**, 905-947-9300.
www.derekhoughton.com

CH 201



CORNELL APARTMENT ~ \$215,800
Located in the centre of Cornell, boasts upgraded white kitchen with eat-in area, walkout to balcony, 2 bedrooms on 2nd level, 1x4 pc semi ensuite & 1x2 pc. Low maintenance, walk to hospital.
Call Derek Houghton**, 905-947-9300.
www.derekhoughton.com

CH 201



STUNNING RAISED BUNGALOW ~ \$399,999
Located in conservation backing onto Roy H. Crosby School. 3 + 1 bdrms w/4 pce semi ensuite. Hrdwd flrs in combo liv/din and bdrms. Reno'd eat-in kit with w/o to deck. Fully fin bsmt w/sep entrance and 3-pce bathrm.
Call Derek Houghton**, 905-947-9300.
www.derekhoughton.com

CH 201



STUNNING DETACHED (McCOWAN & BUR OAK) ~ \$408,800
4 lge bdrms w/4 pce ensuite & w/i closet. Gourmet eat-in kit open to mn flr fam rm w/gas fp, combo liv/din with hrdwd flrs, parking for 4 cars, gar access, solid oak staircase, approx 2000 sq ft.
Call Derek Houghton**, 905-947-9300.
www.derekhoughton.com

CH 201

VIEW THESE HOMES ON ROGERS CHANNEL 201

Visit us at www.sylviahoughton.ca

Email Address: sthoughton@trebnet.com Web Page Address: www.sylviahoughton.ca

