

RE/MAX CLASSIC PROPERTIES - RE/MAX CLASSIC PROPERTIES - RE/MAX CLASSIC PROPERTIES - RE/MAX CLASSIC PROPERTIES - RE/MAX CLASSIC PROPERTIES



LESLEY & ART DIVERS

Sales Representatives

WWW.THEDIVERS.CA

(905) 947-9300



97 ANGUS GLEN

- *60x148 Premium Lot!
- *West Village Model!
- *4000 SF per Builder Plans!
- *Phenomenal Landscaping!
- *Upgraded Gourmet Kitchen with High-end Appliances!
- *Stunning Maple Floor on 2 Levels!



72 DANCER'S DRIVE

- *\$384,900 - 2,275 SF
- *Best Value in Angus Glen!
- *19'x20' Great Room on 2nd Floor!
- *Quiet Private Location! *Westerly Backyard!
- *Double Car Garage!
- *Newer Central Air Conditioning!



14 HARPER HILL

- *Custom Bungalow backing to Angus Glen Golf!
- *Premium Lot with 85 ft across the Back!
- *2 Storey Great Room-Open Concept off Kitchen!
- *Westerly View with Phenomenal Sunsets!
- *Spectacular Landscaping Front & Back! *Custom Decks plus Hot Tub off Master Bdrm! *Over \$300,000 in Upgrades!



97 HEATHERWOOD

- *\$588,000 *Walk to Main Street Unionville!
- *3400 SF Robert Harrington Model!
- *Open Concept Family Sized Kitchen!
- *Gorgeous Maple Flooring!
- *High-end Light Fixtures!
- *Finished Lower Level with Nanny's Quarters!



17 GROVE

- *\$449,000 *Award Winning 225 sf Wraparound Veranda!
- *Fabulous Quiet Street in Markham!
- *Newer Roof, Furnace & Upper Windows!
- *Huge Family Sized Kitchen!
- *All Appliances Included!
- *Meticulously Maintained Inside & Out!

VIEW AT WWW.THEDIVERS.CA - VIEW AT WWW.THEDIVERS.CA - VIEW AT WWW.THEDIVERS.CA



SYLVIA MORRIS

Sales Representative

#6 by production in Canada for 2006

905-477-7785 cell 416-705-7785

www.sylviamorris.com



Leading Edge Realty Inc., Brokerage
Independently Owned and Operated

190 MAIN ST.,
Suite 201,
UNIONVILLE



LOT 3 CAIRO CRT. STOUFFVILLE
(BLOOMINGTON/10TH LINE)
Chiavatti custom built, bungalow, approx 1.5 acres, approx 2,800 sq. ft.
\$849,900



LOTS 4 & 5 CAIRO CRT. STOUFFVILLE
(BLOOMINGTON/10TH LINE)
Chiavatti custom built, 2 storeys, approx 1.5 acres, approx 3580-4180 sq. ft., closing June/07.
\$879,000 - \$949,000



35 ODESSA CRESCENT
Absolutely stunning, approx 4178 sq. ft. of luxury, granite foyer, 10' ceiling on main flr, pillars, hwd flrs, premium lot, backs ravine, double storey window backs ravine.
\$1,188,000



5580 SHEPPARD AVE #410, TORONTO
(MARKHAM & SHEPPARD)
Fantastic location, 6 suites per floor, great investment, 2 bedrooms, well kept condo.
\$114,000



1 LINDCREST MANOR
Prime location, corner lot, facing 2 parks, lovely Greepark home, lots of upgrds, neutral decor, 9' ceilings on main flr, mins to 407, 404.
\$438,800



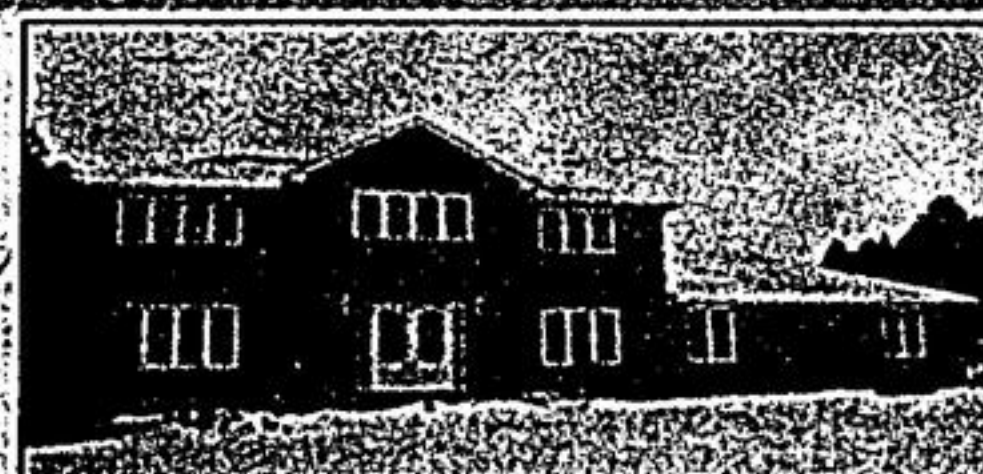
1275 MARKHAM RD #402, TORONTO
(MARKHAM/SHEPPARD)
Renovated, very large unit, approx 1400 sq. ft. w/lrg balcony, many upgrds, 2 bdrms, 2 wshrms and den.
\$164,900



32 WILDBERRY CRESC. VAUGHAN
Fabulous family home in Vellore Woods, tons of upgrds, prof finished lower level, mins to Wonderland.
\$448,800



1944 BUR OAK AVENUE
Fabulous townhome built by Royal Park, approx 1450 sq. ft., 3yrs new, original owners, totally reno'd, main flr family rm w/gas fireplace, walk to 2 schools & Go Train.
\$309,000



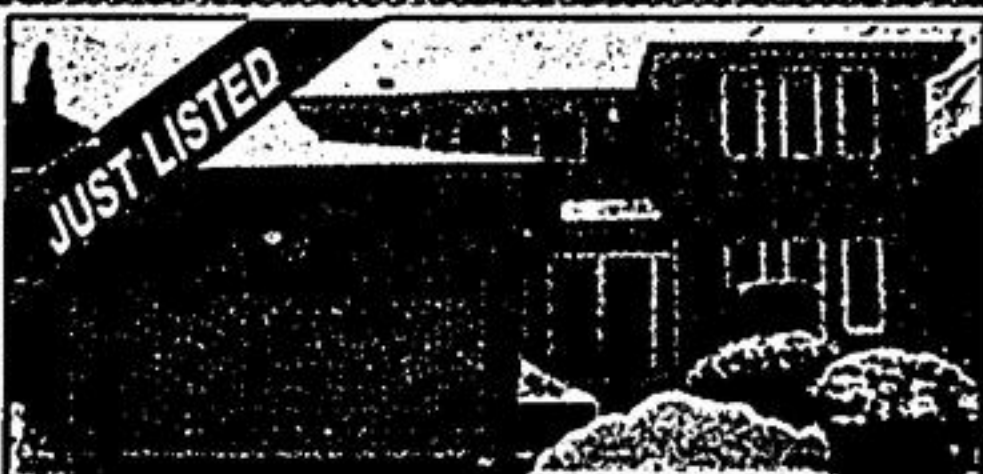
32 BOYNTON CIRCLE
Exclusive custom built home in Jennings Gate Estates, just over 1 acre of property, approx 3700 sq. ft., mins to downtown Unionville, 3 golf courses, rec centre.
\$980,000



10484 WOODBINE AVENUE
End unit, brand new, approx 2250 sq. ft. of luxury in European inspired Cathedral Town, 5 new appliances.
\$449,900
Also avail for rent: **\$1900/month**



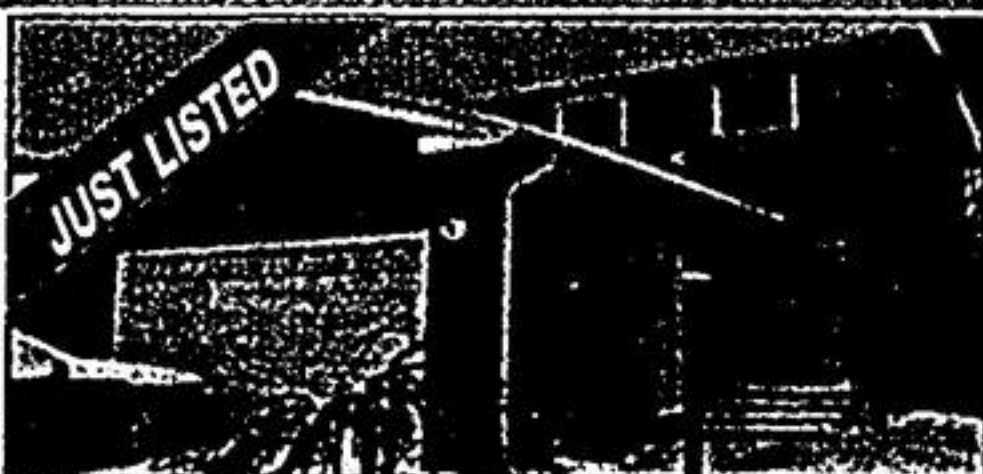
50 MIRAMAR DRIVE
Gorgeous townhome by Baycrest Homes, thousands spent on upgrs, just over 2 yrs new, gas fireplace in great rm, upgrd kit w/o to huge 2 tier deck, close to all amenities.
\$304,900



116 TILMAN CIRCLE
Thousands spent on upgrds, recently reno'd, Betz inground pool, prof landscaped, prof finished lower level w/rec rm & office, walk to 3 schls, parks & buses.
\$449,900



41 FORTY-SECOND STREET
Walk to Main Street Unionville, library & art gallery, approx 3200 sq ft, main flr den, inground pool, walk to 2 schools, mins to 407.
\$509,800



80 TROTHEN CIRCLE
Original owners, walk to Main St., 16th Ave. & Go Train, very private backyard, walk to 3 schools, recently reno'd, child safe circle.
\$304,900



1 CONSERVATION AVENUE
Conservation area, totally reno'd, thousands spent on upgrds, w/o bsmt w/kit, bath & rec rm, wlk to 2 schls, Markville Mall & Hwy 7, mins to 407, 404.
\$445,900

Your Canadian connection in Florida, Dunedin home of the Blue Jays.

Waterfront condos from: **\$249,000.**

Call our office for further details.

CALL SYLVIA FOR A FREE MARKET EVALUATION

