

REAL ESTATE

February 17, 2007

Markham
Stouffville
EDITION

yorkregion.com

ECONOMIST & SUN

Sun-Tribune
Printed in Canada

SCENIC PORT PERRY CUSTOM HOME!



DIANE BROMLEY*
www.dianebromley.com

905.470.1951



View breathtaking sunsets, from the walls of windows that span the rear of the home overlooking Lake Scugog. Open concept design, w/loft overlooking the great rm. Hrdwd, porcelain & berber flooring, spa style ensuite, 2 Tier patio at dockside. Lower level w/o, 2 bdrm apt & sep exercise rm. 3 fps, hot tub + superior workmanship & all the "Bells & Whistles". Truly one of a kind!

\$899,000

GET OUT OF TOWN!



ALANNA ENGLISH*
aenglish@trebnet.com

905.947.9300
416.566.9087



Pastoral privacy, whisper quiet surroundings & above all View-1-Full! 10 acres prime lands Kennedy/Vardorf, stream, fishpond, meadows, lawns, gardens, woods, shade trees, 11 rms, 4 bdrms, 3 wsrms, fin lower level, approx 2500 SF, patios, decks, 2 car garage. Sep workshop, barn, 2nd sty loft, approx 3000 SF, 2 bays, outside pkg for 50 cars. Custom built home "NEW" Home-Office, new steel roof, deep drilled well, ground source heating, generator. May we tell you more? Call today for a personal tour of this spectacular offering!

\$1,199,000

WHEN DO YOU PLAN TO MOVE?



ALANNA ENGLISH*
aenglish@trebnet.com

905.947.9300
416.566.9087



**• NO COST • NO OBLIGATION •
• ANYTIME •**
Call today for a "Home-SOLD-Plan" to meet and exceed your expectations for customer service.
*Not intended to solicit properties already listed for sale.

"MAPLEWOOD"



MONA FARQUHARSON
Broker/Manager

905.640.4151



Private Gated 16 Acres with Mature Maple Bush: 5000+ Sq.Ft. Main House with 170 Ft. Underground Walkway to 2300 Sq.Ft. Studio/Guest House, 4 Car Garage, Barn, Inground Pool. A Perfect Country Property in a Wonderful Setting.

\$1,050,000

ATTENTION BUILDERS, LAND DEVELOPERS & INVESTORS!!!



ROGER KORTSCHOT*
Sales Representative

905.940.4180



Fabulous development property surrounded by existing subdivision. Sought after Markham loc close to all amens. Parcel suitable for between 4 & 6 res lots. Property 100x200 ft. "LVI" lot w/beautiful mature trees. Also has 100 frontage on road at the rear of the lot. Sewers, gas & water at rear of property & E. side of the property. Spacious 4 br being w/huge m/fir farm offers entry style living in town also inc gar/workshop w/loft. Bldg also would be suitable for home occupation or small bus. Listing Agent has details of talks w/town of Markham planners & engineers.
CALL ROGER KORTSCHOT*, 905-940-4180 FOR MORE INFO ON THIS PROPERTY!

\$849,900

OPPORTUNITY KNOCKS!



ROBERT ALOE*

905.940.4180



Great value with this open concept, back split. A Muskoka-like setting located on a quiet street just minutes from St. Andrews College. Makes a great starter home, investment or for expansion. Renovated from top to bottom. Walking distance to amenities, many parks, GO Station and Yonge Street. Call me for more information or for an appointment.

\$319,000

IT'S A RANCH-STYLE 80' X 200'



MAVIS SMYLIE*

905.477.0011



Thank you Grace and Murray for allowing me to market your lovely bungalow. Wishing you every happiness in your new home.

SOLD * REVE DRIVE * SOLD



DONNA LINCOLN*

905.940.4180



Thinking of selling?? The time to list is now! Call today for an evaluation of your house & assistance on how to get your house ready for "Today's Market."

RESULTS & RESULTS!!



AMIN JADAVJI*
"MULTIMILLION DOLLAR PRODUCER"

905-477-0011



NEW LISTING!
7 HUMPHREY GATE (DVP/Lawrence), Approx. 2600 sq ft, 4 bdrm freehold townhouse. Fully loaded @ \$458,800.
7 LORRAINE DR. Penthouse, 2 storey with balcony, gorgeous condo at Finch/Yonge. Offered @ \$549,900.
THINKING OF SELLING, PLEASE CALL AMIN @ 905-477-0111 "EXPERIENCE + ACTION=RESULTS!"

NEW CUSTOM BUILT HOMES 122 AND 126 PARK DRIVE NORTH



DON GELDART*

905.640.3131



New custom built open concept executive homes built in the heart of Stouffville. Homes feature approx 2700 sq ft of pure luxury. Finishing include approx \$150,000 in upgrades. 4th bdrm could be used for studio or farm rm. Call listing agent for builders list. No question these homes must be seen to appreciate! Asking **\$624,900**

JOIN "CIRCA" OF LIFE = SUITE LIVING!



STEVE KRISTINOVSKI*

416.464.5464



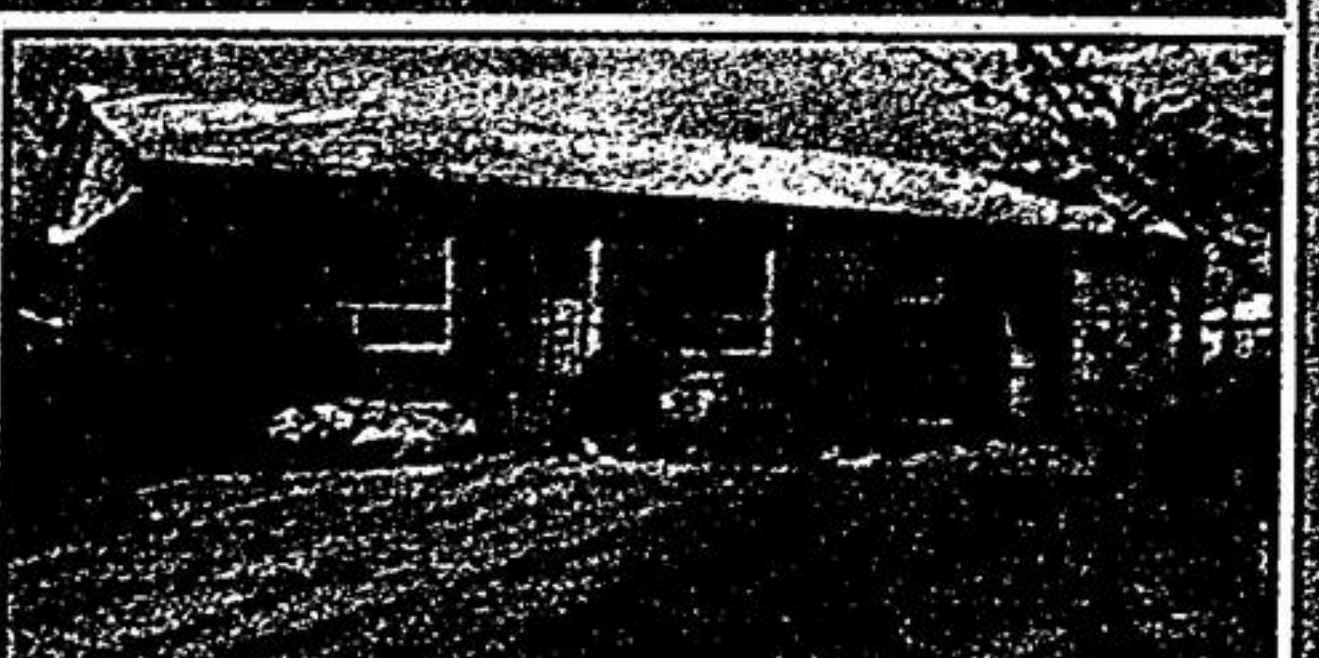
Tridel's new Circa bldg @ Hwy 7, and Warden offers latest features, amenities & 24 hr concierge security. One-of-a-kind suite is a "Penthouse" on a low floor! Huge N/W terrace! Hardwood floors, open concept, black appliances, 2 full baths, parking, premium locker, 833 sq. ft., like new! \$263K. Make your 2007 condo move with The CONDO KING.

SOLD IN ONE WEEK!



MIKE MARSDEN
Sales Representative

905.640.0888



Stunning 1+2 bedroom Bungalow in the heart of Beaverton (proposed 404 extension to pass town). New Laminate flooring, New Carpeting, New Kitchen Flooring, Open Concept Living Room and Dining Room, Finished Basement with Bar, Oversized Eat in Kitchen, Walk-Out to 2 Tier Deck. Shows a 10 Plus. Drive a little, Save a LOT. www.michaelmarsden.ca

LUXURY LIVING @ WALDEN POND!



ADRIANNE PARKER*
JOHANNA PARKER*
MARY JANE SWANSON*

905-477-0011



Sparkling corner penthouse - app. 1500 s.f. walls of windows, gleaming hardwood floors, updt'd ceramics, b/i entertainment centre. 2 br + den, eat-in kit w/ w/o to balc, prking + lckr. Indoor Pool etc. Located in the heart of Markham - just steps to mall & entertainment - 55 Austin Dr., PH04

\$359,900

ELEGANT 20 DANIEL COURT



Space + Style in this 'Georgian' built home w/ 3000 sq. ft. fin bsmt! Open concept updated kit/fam rm, hrdwd flrs, 2 skylites, formal living/dining rms, 3 upstairs baths updated, huge master retreat. Large private lot w mature trees & perennial gardens on one of Markham's premier streets!

NEW PRICE \$359,900

OPEN HOUSE SUNDAY 2-4

BUNGALOW WITH FINISHED BASEMENT



MIKE MARSDEN
Sales Representative

905.640.0888



Immaculate 2 br 'Meadowlark' model w completely fin bsmt! Eat in kit w skylight, main fir Indry, vaulted ceilings, gas fp, w/o to sunny deck. Experience a carefree lifestyle - all outdoor maintenance performed, pack up & go as you please while still enjoying life on the ground w attached garage.

\$369,000

SEE MORE PICS ON OUR WEBSITE www.ParkerRealEstate.ca