

GALLO
REAL ESTATE LTD.
EST. 197

We work for you.

905-640-1200

www.gallorealestateltd.com



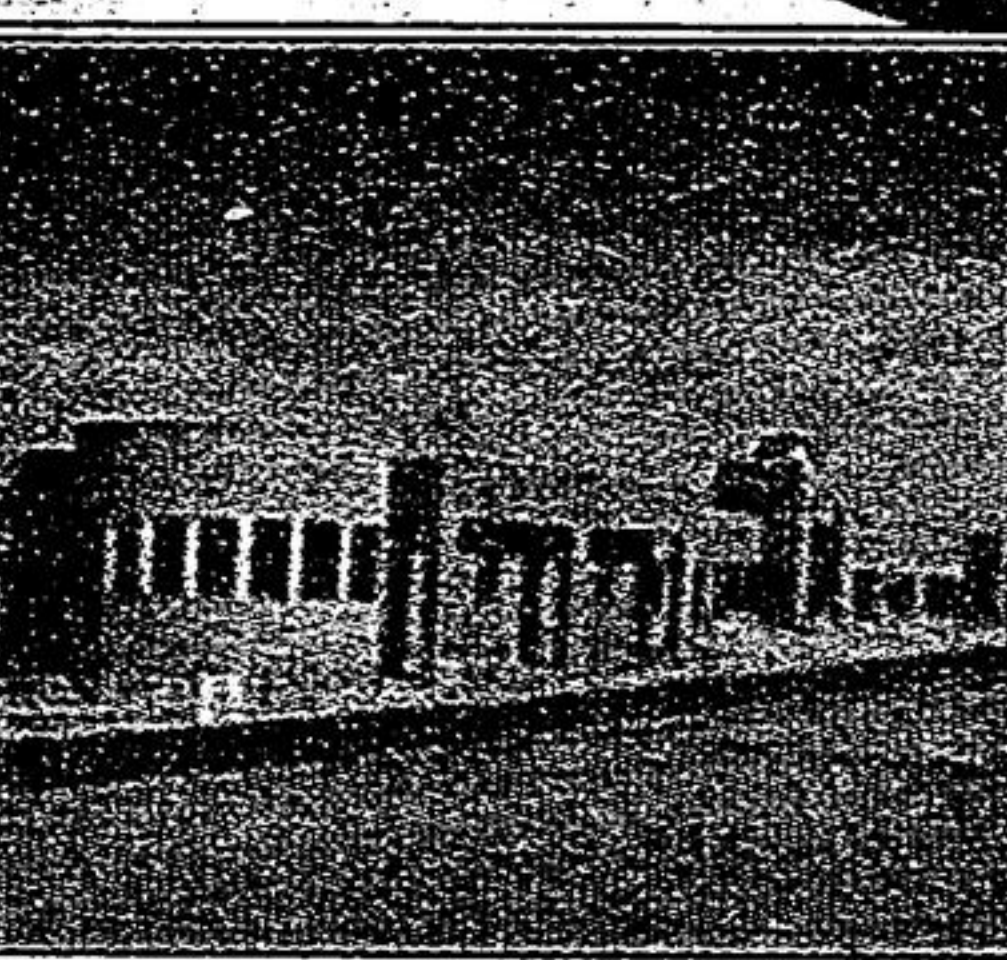
QUAKER VILLAGE!!!
Tastefully decorated! Fabulous floor plan! Country kitchen open to family rm. Fireplace, formal LR & DR, mature tree yard! Deck! A pleasure to show! \$338,800. Call Kim Reesor* or Lynda Sargeant*, 905-640-1200.



PARK-LIKE SETTING
Stunning 2 storey, vaulted ceilings! Oak kitchen open to family room! LR open to DR, gas fireplace, picture windows! Finished walkout bsmt. One of a kind!! \$374,900. Call Kim Reesor* 905-640-1200.



BETTER HOMES & GARDENS! \$499,900
Thousands spent! Cntry kit, granite, slate flr, open to fam rm! Gas FP! Formal LR & DR: Gas FP/Fin bsmt! Upgraded baths! Windows & more! Betz pool & Hot Tub! Private yard! Walk to schls, GO Train! Call Kim Reesor* 905-640-1200.



NEW PLAZA - SPACE FOR LEASE, UXBRIDGE
Corner property at main entrance to Town, next to major shopping centre. Including: Walmart, Canadian Tire & Gas Bar, LCBO, Mark's Work Warehouse, 91,000 sq. ft. Zehrs, Market, Cashway Lumber, Swiss Chalet, Cole's and Tim Hortons. Sought after location - starting at \$19.00 sq. ft. and up. Opening Spring of 2007, come see and compare!
For lease enquiries please contact Adele Gallo or Ross Gallo at 905-640-1200.



STARTER HOME! \$254,900
Sought after location! Cute as a button! Updated windows, furnace, bath! Main flr laundry! Fabulous yard! Gardens! Deck! Walk to all amenities!
Call Kim Reesor* 905-640-1200.



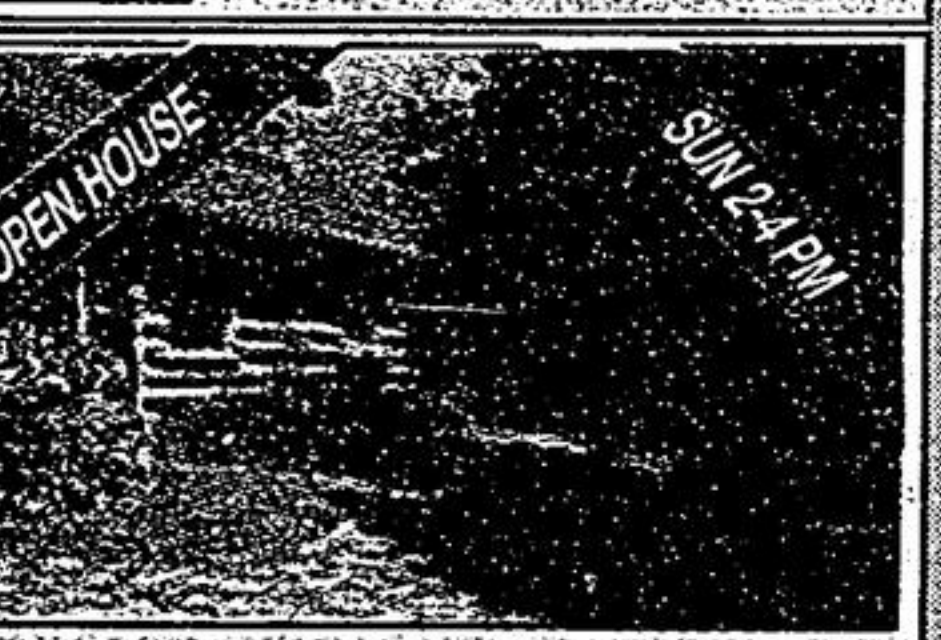
ESTABLISHED NEIGHBOURHOOD EXEC HOME!
Custom built-repro. Approx. 3200 sq. ft. Maple flrs. Custom kitchen/open to fam rm. Prof finished basement! 4+1 bdrms! 4 bths! Salt water pool + hot tub. Private treed 150' yard! Dead end street! Call Kim Reesor* 905-640-1200.



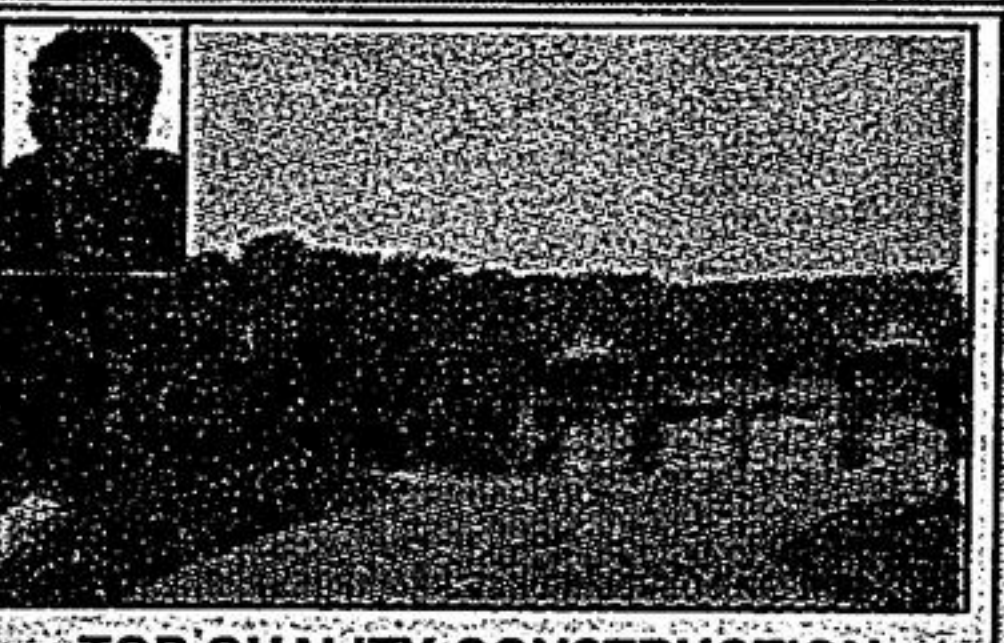
CENTURY HOME! \$469,900
Sought after location! Tastefully renovated thru-out - pine floors, two walkouts, covered verandahs, private lot. Mature trees!
Call Kim Reesor* 905-640-1200.



FAMILY WANTED! \$327,500
West end of town! Spacious 4 bedroom! Eat-in kitchen! Plus finished basement! 3 baths! Double car garage! Come see!
Call Kim Reesor*, 905-640-1200.



STOUFFVILLE NORTH! 6180 CHURCHILL DR. E.
Privacy plus! House + shop on almost 3/4 ac! In recreational lake community. 3 bedrooms, 3 baths, finished walk-out basement. Large heated garage. \$599,900.
Call Connie M. Sima* 905-640-1200.



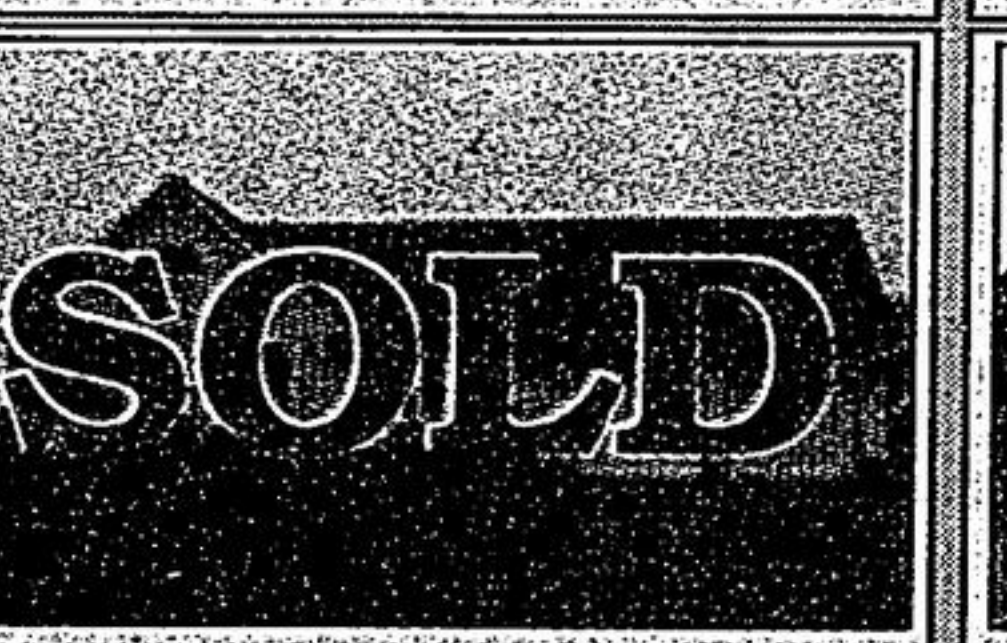
TOP QUALITY CONSTRUCTION
Exceptionally built. Backs onto forest. Custom kit. Stone exterior. Sep ent into fin bsmt. Prof landscaped w/waterfalls. Replacement value \$1,350,000. Value priced \$1,185,000. Call Joseph R. Gallo*, 905-640-1200.



JUST LISTED
Rare opportunity to own a house & shop close to town. 1 3/4 acre with 419 ft. frontage & backs onto open fields. Custom bilt 4 bdrm unique open concept, stone FP. + more. Call Joseph R. Gallo*/Maria Gallo, 905-640-1200.



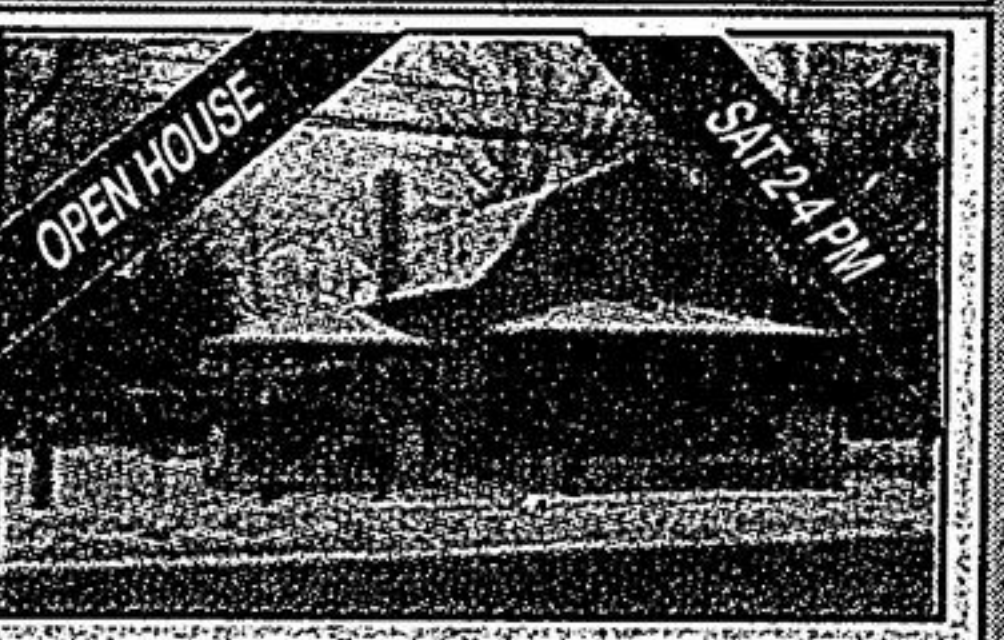
LOCATION, LOCATION! CENTRAL STOUFFVILLE
Prime area. Brick bungalow. 3 bedrooms, large living/dining. Screened porch. Oversized garage. Walk to library, pool, shops, GO Station, school, church.
To see call Norma Card, 905-640-1200.



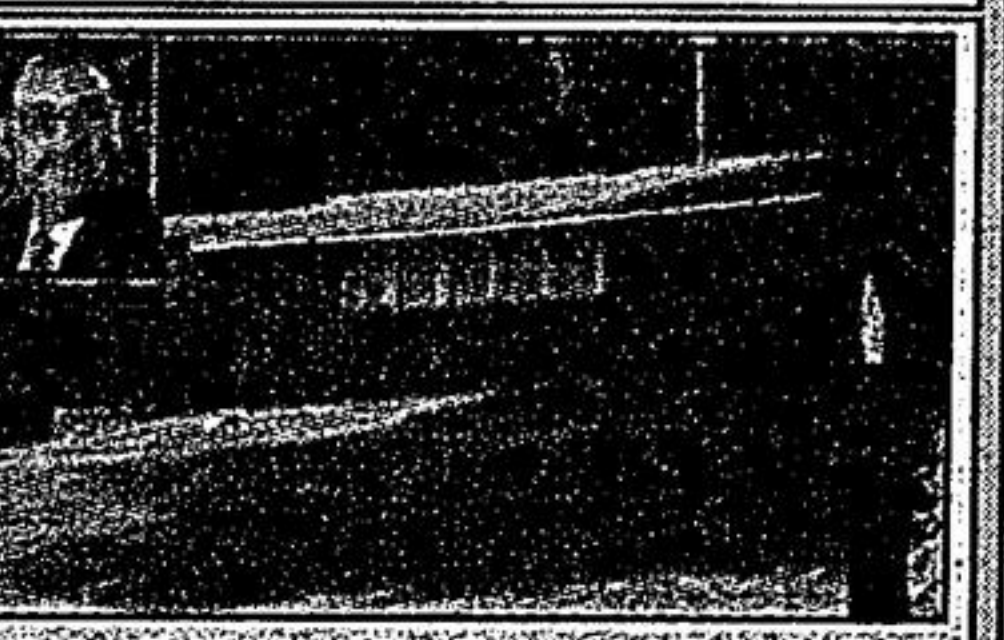
SPACE HERE FOR THE TRUCK - TRAILER - SKIDOO
\$365,000. Close to Stouffville. Totally renovated, 3 bdrm, 2 bth, HUGE dbl gar. Sep liv/din; rec rm w/fpl, excel commute. Oak Ridges Mor. To view please call Norma Card, 905-640-1200.



FOR LEASE - EXPERIENCE THE SERENITY, STOUFFVILLE
Exec bungalow, finished top to bottom. Open concept, granite, hardwood, walkouts, 3 car garage, security system, fibre optic wiv. Easy commute to #404, #407, GTA! Call Norma Card for all the details, 905-640-1200.



\$299,000! 6711 MAIN STREET
Lovely 2-unit home w/2 car gar + 4-car driveway. Beautiful finishes to! Fabulous tile work, hdwd flrs, potlights, cornice mouldings, exceptional trim work & more!
Call Chris Tancock*, 905-640-1200.



LAKE VIEW - MUSSELMAN LAKE
Double lot ideally suited for a new home with walkout or use current building as home/cottage. Municipal water & septic. Call Barry Mitchell*, 905-640-1200.



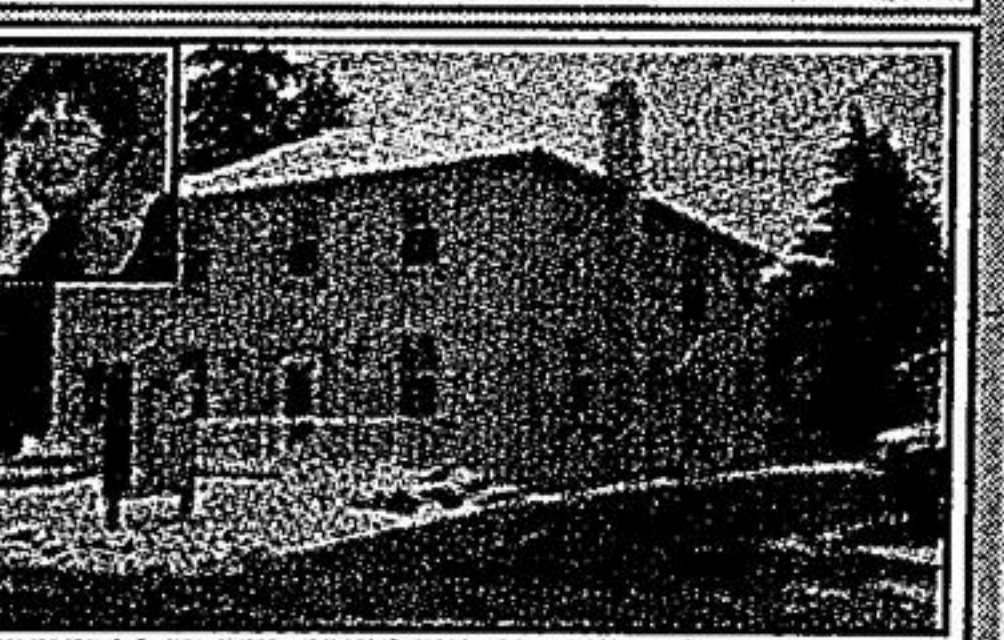
NEW PRICE! - \$299,900
Recently renovated, close to school & park, open floor plan, 5 appliances, lower level family room, brick fireplace, 2 baths, 1 car attached garage.
Call Barry Mitchell* 905-640-1200.



5038 CHERRY - \$949,000
3000+ SQ FT. Custom bilt on 5 acres Vivian Forest + Equestrian Trails. Spectacular Great Room, Family Size Kitchen, Large Formal Dining Room.
Call Barry Mitchell* 905-640-1200.



TRAILS OF NATURE
Borders this estate-w-own access to Forest! Open concept, LR + Kit, family sized + view of sunsets. Prof. finished basement. Insulated for warmth. Separate entrance! \$839,000. Call Ross or Adele Gallo*, 905-640-1200.



FOR LEASE
Brand new, prof office space. 2 units of 800 sq. ft. each. Many windows, kitchenette & 2 pc bath. 16th & Hwy 48. Tenant choice of colours. Immediate possession. Call Ross Gallo* or Adele Gallo*, 905-640-1200.



OPEN HOUSE SAT 2-4 PM FEB 10th
1.93 acs at Bloomington & 10th Line. 3 rd frontages. Lovely 4 bdrm renovated home w/recent 'onground pool' with wrap-around deck. Weedless garden. Outbuilding. See & buy with Elaine Kalmbach*, 905-640-1200.



MAGNIFICENT VIEW - LOVELY NEIGHBOURHOOD
Finished top-bottom. This 3 br home exudes warmth & has a lg front porch + 2 tiered deck to enjoy the magnificent view of the reservoir behind & conservation trls. Like living 'at the cottage', all year round! See & buy with Elaine Kalmbach*, 905-640-1200.



5% DOWN - CARRIES \$1450
That includes taxes & maintenance fee. Easy living! Lovely bright 2 bdrm, 2 balconies, walk to GO train, all schools, shops. 9th Line just N of Stouffville Rd. Watch for signs or call Lesley O'Connor* 905-640-1200.



5% DOWN - CARRIES \$971
Why rent? Come see the possibilities of this 2 bdrm home. 10 minutes to 404 or GO Train! 65x100' lot, septic 2004. Take Hwy 48 N of Stouffville to Lakeshore, to Appleton #9 or call Lesley O'Connor* 905-640-1200.

Outstanding Service... Does Not Cost More

REAL ESTATE Showcase

Interactive Real Estate
yorkregion.com
ECONOMIST & SUN
SUN-TRIBUTE

Published weekly by the Markham Economist & Sun
A Division of Metroland Printing, Publishing and Distributing Ltd.
Publisher - Ian Proudfoot
Managing Director Real Estate - Mike Rogerson
Advertising/Marketing Sales Representatives - John MacRae • Gail Reeves