

REAL ESTATE

January 20, 2007

Markham
Stouffville
EDITION

yorkregion.com

ECONOMIST & SUN
Sun-Tribune
Printed in Canada

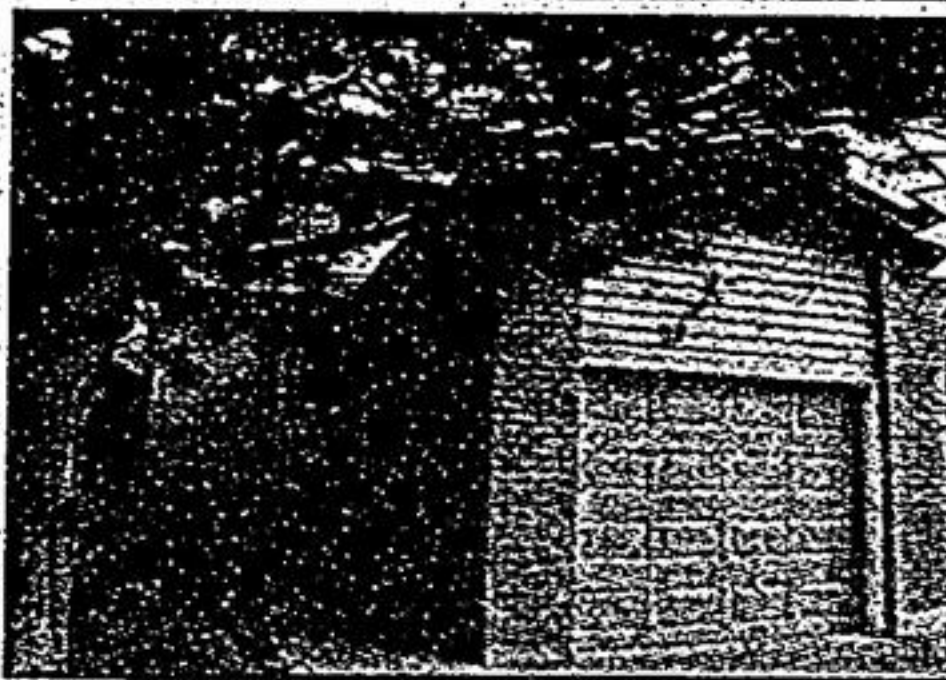
MARKHAM'S BEST VALUE... \$319,900!



DIANE BROMLEY*
www.dianebromley.com

905.470.1951

RE/MAX
NEW CHOICE
Realty Ltd.



THE MINCONZ
21st
SOLUTION

Very rarely will you find a home at this price, in pristine move in condition. Here is a list of all the features you will enjoy. Hdwd & ceramic flrs, dbl wide interlock driveway, finished bsmt w/2pc bath & rec rm & office or extra bdrm, newer furn, gar, front & interior drs, roof, lg shed, w/out thru garden drs to deck & private fenced yard. 3+1 bdrms, great location near rec centre, GO, sch1, mall. Have a look www.dianebromley.com

"TRUST YOUR GUT, TRUST YOUR VALUE SYSTEM & CREATE A LIFESTYLE YOU'VE DREAMED OF FOR YEARS"



ALANNA ENGLISH*
aenglish@trebnet.com

905.947.9300

416.566.9087
RE/MAX CLASSIC
947-9300



Brilliant Swan Lake 2 Br "Bungalow", 3 Washrms, 2 Car Gar, Priv Grdn, Open Flr Plan, Spacious Design, High Ceilings Showcase, EZ Living & Entertaining, Natural Sun Filling Woods, Luxurious Master Ste, Hdwd, Granite. Amenities Inc: Secure Gated Community, 24hr Conc, Lg Clubhse, Indoor/Outdoor Pools, Hot Tub, Sauna, Fitness, Tennis, Wilg/Hiking Trls. Low Condo Fees, Flex Closing Avail, Loaded w/Extras. Grab this brass ring and call today!
\$364,900

LET THE MOMENT CAPTURE YOU... SEASON'S TICKETS TO NATURE'S BEST! KENNEDY/WANDOOB, STOUFFVILLE... COUNTRY CLOSE TO THE CITY!



ALANNA ENGLISH*
aenglish@trebnet.com

905.947.9300

416.566.9087
RE/MAX CLASSIC
947-9300



Classic Alpine Design, Timeless Craftsmanship, Private/Secluded Cntry, Estate: 10 Prime Acs, Meticulously Maint, Exquisite Perennial Grds, Pond, Woods, Meadows & Shade Trees, Sep Workshop, 2 Sky Barn, Brilliant Ecosystem, 12+4 Pms, New Custom Home-Off, Traditional Liv Rms Afford Dramatic Vistas & Welcome You w/Sit-Down Comfort, & Enduring Beauty & Practicality. May We Tell You More? Call Today for our Personal Tour or More Detail on this Spectacular Offering!
\$1,199,000

HIGH DEMAND AREA... THIS ONE WON'T LAST!!!



GEETA & BALDEV* SAINI
info@thesainiteam.com

905.477.6877

Century 21
Percy Fulton Ltd.



Close to GO Train, shops, schools... this beauty is 2700 sq ft with 4 bedrooms, 4 baths & features oak staircase, upgraded kitchen, gas fireplace and more. In a sought after area, call THE SAINI TEAM before it's gone!!!
\$438,900

OPEN HOUSE SUN 2-4, 92 REEVE DR., MARKHAM



DONNA LINCOLN*
905.940.4180

Selling Real Estate for Over 30 Years

ROYAL LEPAGE
YOUR REALTY PARTNER



RAVINE! RAVINE! RAVINE! A Rare Find. "Backs & Sides Gorgeous Mature Treed Ravine". 88 ft Frontage, Front Covered Porch to Upgrade 2860 sq. ft. of Spacious Luxury. Fabulous Hardwood and Ceramic Floors, Finished Basement, Walkout to Deck.

THE PRICE IS RIGHT!!!



ROGER KORTSCHOT*
Sales Representative

905.940.4180

ROYAL LEPAGE
YOUR REALTY PARTNER



A Beautiful Detached Brick Home in Markham. Great Layout w/9 ft Ceilings on Main Flr. Hardwood Flrs. In Family Rm & Kitchen. Upgraded Kitchen Cabinets & Pantry. Oak Staircase, Gas Fireplace, Central Air, Convenient 2nd Floor Laundry Rm. Spacious Master / walk-in Closet & 4pc Ensuite. Walk to GO Train, Schools, Transit & Parks. Call Roger for more details.
\$365,800

GORGEOUS LOFT STYLE TOWNHOME



JOE BATTAGLIA**
905.272.3434

416.564.6611

RE/MAX
Realty Specialists Inc.



250 WALKERVILLE ROAD. Impressive Open Concept Home In The Heart Of Upscale CORNELL! 10' Ceilings, Majestic Staircase, And A Huge Kitchen With Walkout To Large Custom Deck. Double Car Garage. Enjoy Your Morning Coffee On Your Balcony Adjoining Your Luxury Master Bedroom Retreat With Large 4 Piece Ensuite & Soaker Tub. A MUST SEE!! THE LIST GOES ON!

BRISTOL POND ESTATES



MONA FARQUHARSON
Broker/Manager

905.640.4151

Farguharson
A Tradition of Excellence
Selling Fine Properties Since 1956



Scenic 2.8 Acres. Part Ownership in Private Lake with Beach. Luxury 4200 Sq. Ft., 5 Bedrooms, Open Concept Stone & Wood with Oak Trim & Doors. Theatre Room & Superior Recent Luxurious Open Concept Kitchen/Family Room. Private Inground Pool & Spa Area.
\$850,000

OPEN HOUSE SUN 2-4 - 97 HEATHERWOOD



LESLEY & ART DIVERS
Sales Representatives

905.947.9300

RE/MAX
Classic Properties Inc.



3400 Sq. Ft Walk to Main St., Unionville. Stunning Maple Flooring. 5 Baths. Finished Basement complete with Rec room, Home Theatre room, 5th Bedroom & 3 Piece Bath!
\$598,000

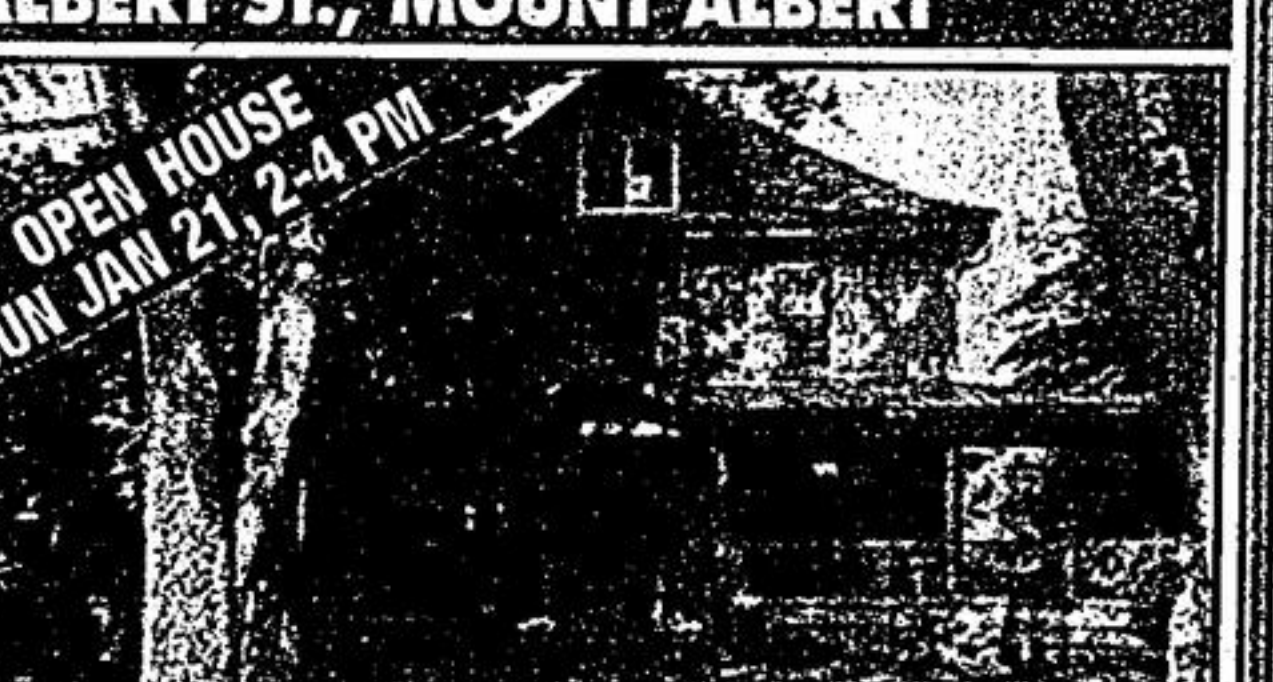
28 ALBERT ST., MOUNT ALBERT



DON GELDART*

905.640.3131

RE/MAX
All Stars Realty Inc.



Charming 6 bdrm Century home on 1.64 acres. Great for a large family or someone operating a home business. Totally renovated, featuring a 9 ft wrap around porch, stone fireplace in fam rm, hdwd flrs, central air, finished loft & sep 24x20 workshop. Shows pride of ownership.
\$579,000

47 ROYAL CROWN ROAD



STEPHEN TAR*
905.475.2100

1:888.477.6690

Century 21
Leading Edge Realty Inc. Brokerage



Bright and spacious 3 bedroom family home. Beautiful open concept, laminate and ceramics on main floor, walk-out to a custom deck with built-in seating & flower boxes in a fully fenced yard. Walk to train, parks and schools.
\$362,500

APPROX 2700 SF STUNNING 1 1/2 YR NEW HOME



ADIL ESMAIL*
One of Canada's TOP 20 Teams for C21 from 1999-2006

905.477.6877

Century 21
Percy Fulton Ltd. Brokerage



This GORGEOUS Newer Home has \$\$\$ in Upgrades: Upgraded Kitchen; Full Oak Staircase; 3 Washrooms on the 2nd Floor; Premium Lot and MUCH MORE! Call for Details.
\$439,000



ADRIANNE PARKER*
JOHANNA PARKER*
MARY JANE SWANSON*

905-477-0011

RE/MAX
All Stars Realty Inc. Brokerage



WALDEN POND OPEN HOUSE
SUNDAY 2-4
\$359,000 - New Year, New Prices! 2+1 CORNER PENTHOUSE. Gorgeous hardwood floors, updated ceramics, Eat-in kitchen w/walk-out to balcony. Huge rooms fit "house sized" furniture. Master has w/closet, w/o to balcony & 4 pc ensuite w/separate shower stall. Walls of windows, you would love it. Fantastic ams & unparalleled location! 55 Austin Dr. PH4. Don't miss it!
SEE MORE PICS ON OUR WEBSITE www.ParkerRealEstate.ca

ENJOY THE SWAN LAKE CONDO LIFESTYLE!

GROUND FLOOR CORNER SUITE • Two bedroom 'Catalina', open concept, main floor unit with walk-out to terrace, 1 parking + locker. \$319,900.

NEW LISTING! 3RD FLOOR CORNER SUITE • Two bedroom, 1474 sq. ft., large balcony, 1 parking + locker. \$349,900.

2 STOREY TOWN HOUSE • Sophisticated urban living with 9 ft ceilings, hardwood floors, gas fireplace, backs to private greenspace. \$319,900.

END UNIT BUNGALOW • Two bedroom 'Meadowlark' with fully finished basement! Eat-in kitchen, sunny south deck, gas fireplace. \$369,000.

BUNGALOW - 23 AUGUSTA DRIVE WAY



Like a model home! Sought-after Wood Duck model with walkouts from kitchen AND sunroom. Vaulted ceiling, gas fireplace, master with walk-in closet and ensuite with separate shower stall. Private back deck. Partly finished basement. \$384,900