

**1<sup>ST</sup> EVER FACTORY AUTHORIZED  
PILLOW TOP SALE  
WE PAY THE TAXES**

**QUEEN SET**

FIRM \$399 MEDIUM \$499 PLUSH \$599

Limited Quantities

**COUPON** Any **2 FREE CHOICES**

• Bed Frame • Set-up • Comforter, Disposal of Old Set • Mattress Pad  
• Layaway • Set of Sheets  
• Bed Rails • Pillow  
• Local Delivery

**OR** **DO NOT PAY FOR 1 YEAR O.A.C.**

With Any Mattress Set Purchased

**MATTRESS HAVEN**  
74 Main St. North, Markham  
(Markham Rd./Hwy. 148)  
905-477-7504

FRONT & BACK ENTRANCES • FREE PARKING ON SITE

HOURS:  
Mon.-Wed. 10:00am-7:00pm  
Thurs.-Fri. 10:00am-8:00pm  
Sat. 9:00am-6:00pm  
Sun. 11:00am-5:00pm

**LOOK FOR  
KITCHEN  
STUFF PLUS**

**Great Stuff! Great Prices!**

4 Page Flyer in Today's Paper!

delivered to select homes

# Medical waste site safe, residents told

BY HANNELORE VOLPE  
Staff Writer

A proposed medical waste recycling facility won't endanger a Gormley neighbourhood, its owners reassured residents Thursday.

Stouffville residents Salvatore and Tina Vitale, who have operated Octagon Medical Services in Brampton since 2002, called a public meeting to answer questions.

The issue was first brought to council in October 2005, resulting in an emotional meeting where residents expressed their fears of what the facility may bring.

The Vitales told about 20 residents Thursday the Cardico Drive facility would process medical waste from labs and doctors' and dentists' offices, not from hospitals.

The facility would be regulated by the Ministry of Environment and the Transportation of Hazardous Goods Act.

The Ministry of the Environment conducts frequent surprise inspections on these types of facilities, including at their Brampton operation, Mr. Vitale.

Residents were assured the facility's system doesn't

discharge waste in to the septic system. A small amount of sterilized steam is released inside the building during the recycling process.

The company could have a maximum of 10 tonnes of waste to be recycled at any one time. The company owns two trucks, which would unload waste inside the building.

"This is not a waste disposal site," Mr. Vitale noted. "What goes in has to go out."

Despite reassurances, Gormley resident Sophie Angelis, whose well is about 30 feet from the property, remains concerned about possible contamination.

Gina Morlock, expressed concern about what would happen if one of the company's trucks was involved in an accident.

Another resident wondered how serious contamination would be in the area if there was a fire at the medical waste recycling facility.

Councillor Clyde Smith, who has fielded many calls from concerned residents, said most were worried about possible spills, groundwater contamination the spread of germs and contaminants.

Some residents felt their

**Dare to Compare**

Before you buy, we dare you to compare Kia to the competition.

**OWN IT**

**2006 SPECTRA**

**PURCHASE FINANCING \$172** **0.9%**

\$1,995 DOWN PAYMENT PER MO./60 MOS. FINANCE APR\*

**43 MPG** **6.6 L/100 KM** highway fuel consumption\*

EX model shown\* MSRP \$15,995\*

Compare the 2006 Spectra

Features	2006 Kia Spectra 4dr Sedan LX Convenience	2006 Honda Civic 4dr Sedan DX-G	2006 Toyota Corolla 4dr Sedan Sport
MSRP	✓ <b>\$17,895</b>	\$18,880	\$20,615
Engine	✓ 2.0 L/4 cyl.	1.8 L/4 cyl.	1.8 L/4 cyl.
Torque	✓ 136 lb. ft. @ 4,500 RPM	128 lb. ft. @ 4,300 RPM	122 lb. ft. @ 4,200 RPM
Air conditioning	✓	✓	✓
Cruise control	✓	X	X optional
Power windows	✓	✓	✓
Heated power adjustable mirrors	✓	✓	✓
15" wheels	✓	✓	✓
Seating/lumbar support	✓	X	X
60/40 split-folding rear seats	✓	X	✓

**OWN IT**

**2006 SORENTO LX 4x2**

**PURCHASE FINANCING \$299** **0.9%**

\$3,545 DOWN PAYMENT PER MO./60 MOS. FINANCE APR\*

**26 MPG** **10.7 L/100 KM** highway fuel consumption\*

EX model shown\* MSRP \$27,895\*

5-STAR CRASH TEST RATING\*\*

• Front & side curtain airbags • Power windows & door locks  
• Cruise control • Heated front wipers & power mirrors  
• Air conditioning • Fog lamps

**5-5 Total Care Coverage** TOTAL CARE OWNERSHIP COVERAGE

5-YEAR/100,000 KM WORRY-FREE COMPREHENSIVE WARRANTY\*\*  
5-YEAR/100,000 KM POWERTRAIN WARRANTY  
5-YEAR/100,000 KM EXTRA CARE ROADSIDE ASSISTANCE

To locate a Kia dealer near you, visit [kia.ca](http://kia.ca).

**KIA MOTORS** The Power to Surprise™

THE FASTEST GROWING AUTOMAKER IN THE WORLD.

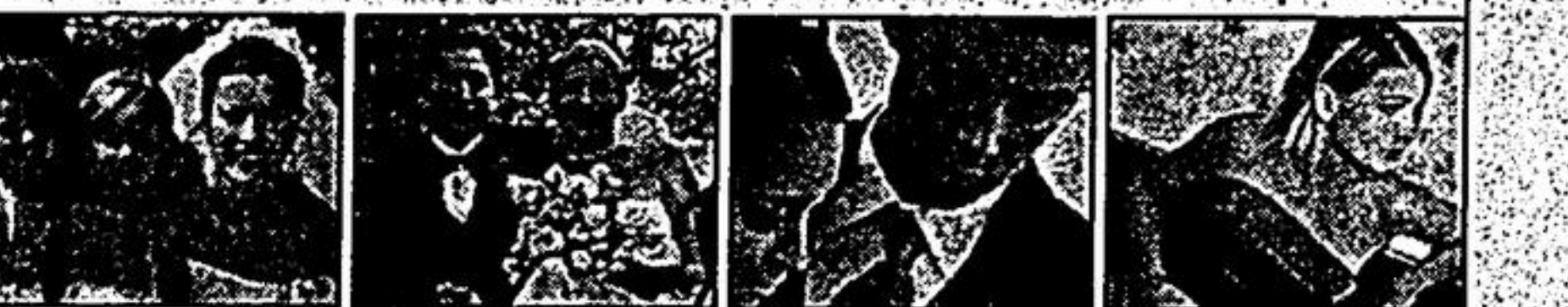
**Bridal & Formal BOUTIQUE**

You have dreamt about walking down that aisle since you were a little girl, and now the big day is approaching...

When you are ready to buy - come in and see us - no reasonable offer refused!

**Bridal and Formal can make your dreams come true!**

We specialize in Bridal Gowns, Mother of the Bride dresses and tuxedos.



**Bridal & Formal Boutique**

4981 Hwy 7 East Markham  
905-477-8321

Markville Shopping Centre

**Kia of Markham**  
29 Laidlaw Blvd., Markham, ON (905) 201-0083

\*Based on an MSRP of \$15,995/\$27,895 on 2006 Spectra (ST5416)/2006 Sorento (SR55X6) with annual purchase financing interest rate of 0.9%/0.9%. Monthly payment is \$172/\$299 for 60 months; amortized over an 84-month period with \$1,995/\$3,545 down payment. Estimated remaining principal balance of \$4,091/\$7,115 plus applicable taxes due at end of 60-month period. MSRP's and purchase financing offers exclude delivery and destination of \$1,250/\$1,395. Licence, registration, insurance, delivery and destination, dealer administration fees and taxes are not included, unless otherwise stated. Dealers are free to set individual prices. Prices subject to change without notice. †Featured models are not exactly as illustrated. Images contain available accessories. ††NHTSA (National Highway Traffic Safety Administration) test results. Visit [www.nhtsa.dot.gov/ncap](http://www.nhtsa.dot.gov/ncap) for full details. ‡Fuel consumption for 2006 Spectra (ST5416)/2006 Sorento LX MT 4x2 (SR55X6) is 42.8 mpg (6.6 L/100 km)/26.4 mpg (10.7 L/100 km) Highway. These estimates are based on the Government of Canada's approved criteria and testing methods. The actual fuel consumption of these vehicles may vary. Refer to the Government of Canada publication EnerGuide Fuel Consumption Guide. ††Kia's 'Worry-Free Comprehensive' warranty covers most vehicle components against defects under normal use and maintenance conditions. Price, availability and specifications are subject to change without notice. Information in this advertisement is believed to be accurate at the time of print. All comparative data is sourced from Auto Canada, licensed by AutoData Solutions. †††Kia is a trademark of Hyundai Motor Group. ††††Kia is a trademark of Hyundai Motor Group. †††††Kia is a trademark of Hyundai Motor Group.