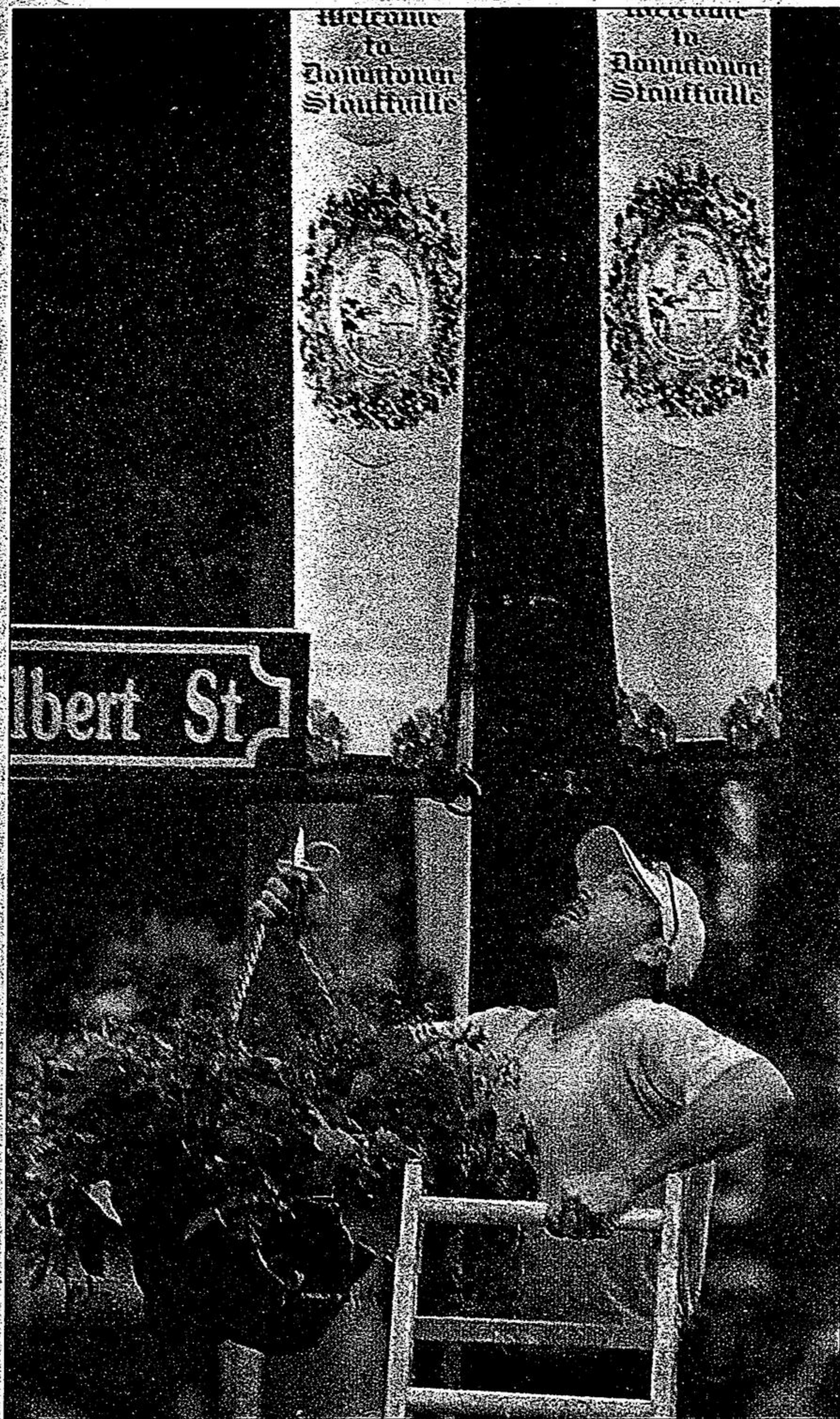


## HANGING AROUND

Dan Lamirande of the town's leisure services department climbs a ladder to hang a planter on one of the light posts on Stouffville's Main Street last Thursday. Crews are preparing for this weekend's Elvis Fest and the Strawberry Festival, June 29 to July 2. For more information, go to [www.strawberryfestival.ca](http://www.strawberryfestival.ca)



STAFF PHOTO/SJOERD WITTEVEEN



### WISHING WELL MONTESSORI SCHOOLS

(905) 470-9751

455 Cochrane Dr., Markham (Hwy. 7 & Woodbine)  
2 Nobert Road, Scarborough (Victoria Park & 401)

#### OPEN HOUSE

Saturday, June 10th, 2006 - 11:00 am to 3:00 pm

#### MONTESSORI SCHOOL

- Ages 2 1/2 - 6 years*
- Learn to read and write
  - Learn math concepts
  - Daily French Classes
  - Reach Ahead Grade 1 Program



#### Junior School

- Grades 1 - 8*
- Advanced curriculum
  - Daily homework assignments
  - Wide range of extra curricular activities
  - Reach Ahead Credits in Grade 8



#### College

- Grades 9 - 12*
- Individualized Advisor Program
  - Accelerated Academic Program
  - Advanced Placement Courses offered
  - 100% university acceptance

SUMMER CAMPS AGES 2 1/2 TO GRADE 8

### Golfers, sponsors needed for mayor's golf tourney

There's still time to enter the 2006 Mayor's Community Golf Challenge. The tourney, hosted by Mayor Sue Sherban, goes July 6 at Ballantrae and Station Creek golf clubs. Funds raised go to Parkview Home Building Fund, the

Whitchurch-Stouffville fire department and the mayor's foundation. Entry fee is \$200 per person and includes lunch, golf and a buffet dinner. Sponsorship opportunities are also available. For more information, call Mrs. Sherban at 905-640-1910 ext 227 or e-mail [mayor.sherban@townofws.com](mailto:mayor.sherban@townofws.com)



### SEATON VALLEY MODEL AIRPLANE CLUB

Saturday, June 17, 2006

(Rain Date Sunday June 18)

#### AIR SHOW - INVITATION

Gates open at 11:30am Air Show Starts at 1pm

**FREE** to YOU and your FAMILY so join us at our **OPEN HOUSE** for a day of fun and excitement where you will witness a breath taking air show, talk to the pilots, and admire the many types of radio control model aircraft on display. (Bring your lawn chair)  
Bring this ad or a copy of it for a \*free pop with the purchase of a hot dog or hamburger. (\* while supply lasts)  
Thinking of joining this year? Bring this ad or a copy of it and have the one-time initiation fee (\$50) waived.  
We are just west of Clarendon (North Pickering) turn north on SR 20. Please visit [www.seatonvalleyrc.ca](http://www.seatonvalleyrc.ca) for more info.  
Thanks to our sponsor Smith & Long Limited

## Windfall ecology festival 2006

# TrashFASHION SHOW

and World Music Concert Stage

Cassava Latin Rhythms Band

5th Annual Ecology Festival

Saturday Evening • June 10 • 7:pm  
at the Windfall Ecology Festival  
Fairy Lake Park • Newmarket

Festival Hours • Saturday June 10: 11:am - 10:pm • Sunday June 11: 11:am - 5:pm  
Free Admission • [www.windfallcentre.ca](http://www.windfallcentre.ca) • 1-866-280-4431



produced by The Windfall Ecology Centre in association with In House Productions