

## Stouffville Says

How does the province-wide smoking ban in restaurants, bars and work places affect you?

— Asked at Stouffville A&P

Shelley BALIK



Knowing what we do about the dangers of second-hand smoke, I think it is a good idea. In restaurants, it would irritate me to sit next to a smoker and it is a poor example for the children.

Jason DWYER



I smoke occasionally, but I don't mind not smoking in restaurants. I don't want it to affect other people's health.

Sherri O'HANLON



I am glad they are banning smoking. It gives us more choice as to the places we can go because we don't smoke.

Graziano VOLPE



Businesses, such as bars, will lose much of their income because the smokers won't be there anymore. There should be places which are designated for smoking.

## BEHIND THE SCENES TOUR



STAFF PHOTO/SUSIE KOCKERSCHIEDT

Trish Robinson poses at Schell Lumber, one of 13 stops on Whitchurch-Stouffville's third annual Doors Open event Saturday from 10 a.m. to 4 p.m. The event allows residents to visit heritage sites and buildings of historic significance. Other sites include Lemonville

United Church, Willow Springs Winery and Richmond Hill Live Steamers miniature railway. For a complete list and more information, log on to [www.doorsopenWS.ca](http://www.doorsopenWS.ca)

## New high school will be sustainable model

BY HANNELORE VOLPE  
Staff Writer

Stouffville's new high school is set to become a model of sustainability for others to follow.

A close eye is being kept on how construction is done and what materials are being used, current Stouffville District Secondary School principal Arlene Smith said, "to make sure we are environmentally friendly and sustainable."

Currently, the new site at the end of Weldon Road, behind Sobeys, may just be a hole in the ground, but construction on the footings has already begun.

The school is slated to open in the fall of 2007.

In September, a half-time teacher will be teaching learning for a sustainable future, a program developed by an organization that looks at all aspects of sustainability.

The school's location on the Oak Ridges Moraine makes it ideal for this purpose, Ms Smith said.

The new school has a maximum capacity for 1,500 stu-

dents with the capability of having a permanent addition for another 500 students added. As well as more computer rooms, the school will offer hospitality and manufacturing programs.

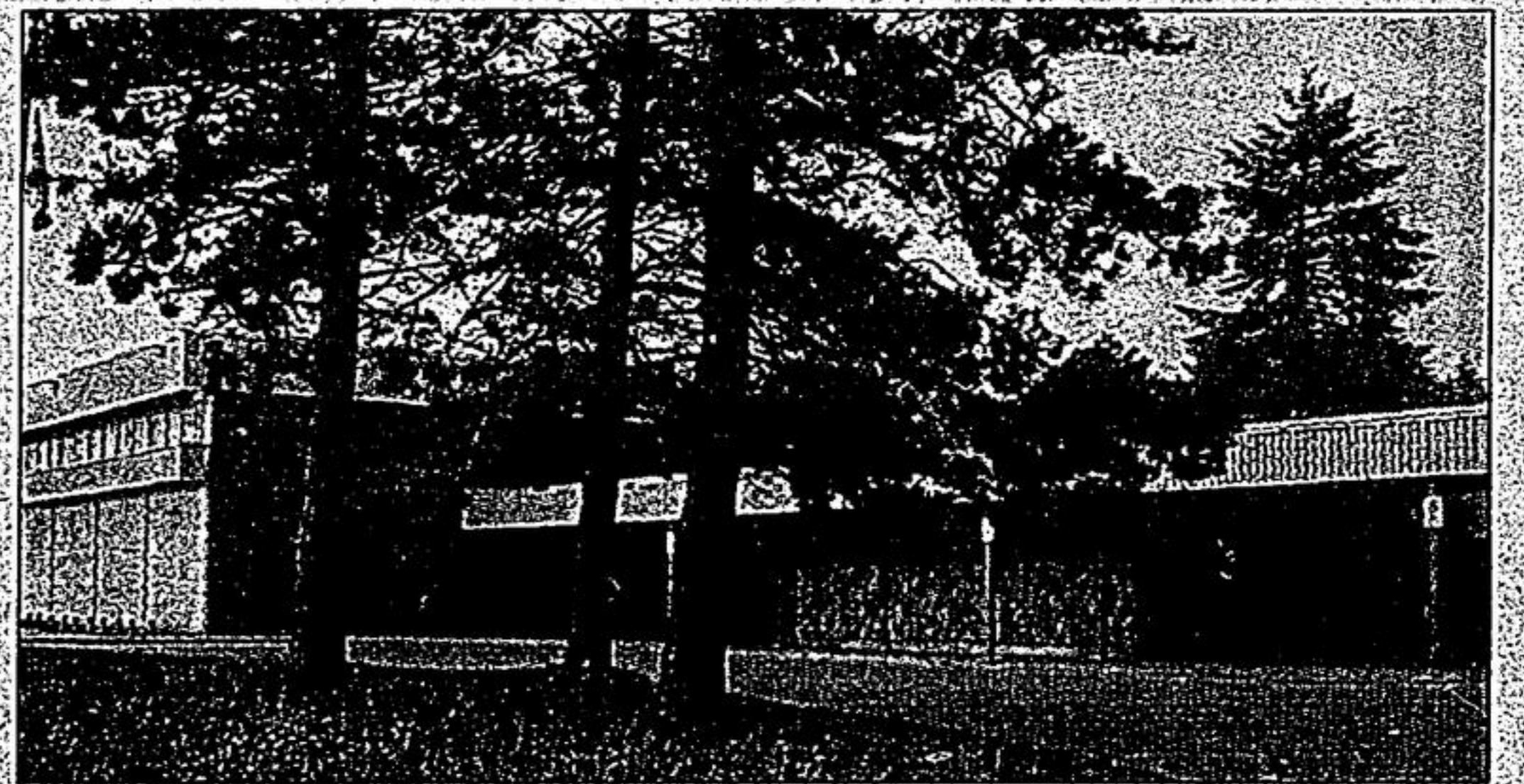
"We are trying to meet the needs of all the students in the community," Ms Smith said.

Planning for the new school started when Ms Smith became principal at SDSS two years ago.

September marks the beginning of the last year at the Bramble Crescent location for grades 9, 10 and 11 students.

There are no firm plans yet for the old school. Possible scenarios including having the school declared surplus or prohibitive to repair. It could then go to the Ontario Realty Corporation for sale.

The school is on 22 acres, which includes the running track and two playing fields. It could be sold to developers or the school board could sell it, Ross Virgo, spokesperson for the York Region District School Board, said.



STAFF PHOTO/HANNELORE VOLPE

The fate of Stouffville District Secondary School is unknown. A new high school will open near Sobeys next year.

The property would be sold as one parcel.

"From the perspective of the town, we would like the track and the playing fields to remain," Tom Parry, the town's director of development services, said.

A time capsule, to be placed in the new school, is being put together to keep memories of

the school alive for future generations.

Shortly after commencement next year, the school will close its doors for good.

Around 875 students are anticipated at SDSS for next year, up slightly from this year's student population of around 850. A second vice-principal will also be hired.

## It's Strawberry Festival Time Again!

June 29 - July 3, 2006

Rice Commercial Group Presents Yuk Yuk's  
Friday, June 30 - doors open at 7:30 pm

Tickets are \$1500 each, available at the Lebovic Leisure Centre,  
The Strawberry Festival office or at the door that night.



[www.strawberryfestival.ca](http://www.strawberryfestival.ca)  
905-64BERRY (905) 642-3779