

Mulch can add many benefits to garden

• **Moisture.** A properly done mulching job will conserve a great deal of soil moisture by reducing evaporation, which prevents erosion and injury to your plants that result from drought. Also, for the gardener looking to spend as little time as possible watering his plants, the conserved moisture resulting from the mulch will lessen the amount of time you'll spend doing that.

• **Health.** Organic mulch will add nutrients to the soil, helping your plants better maintain their health.

• **Weed reduction.** Mulch goes a long way toward combating weeds, as weed seeds that blow onto bare ground typically grow very quickly. Those that blow onto mulch, however, are far less likely to sprout. Also, the weeds that do sprout even in the presence of mulch are far easier to pull out than those that grow from bare ground.

• **Temperature.** Mulch helps maintain a cooler soil temperature, benefiting root growth, which helps the roots stay stronger in winter as well.

• **Mower protection.** Plants surrounded by grass instead of mulch are more susceptible to mower damage when it comes time to cut your grass.

first want to do your planting. No plants will stand a chance if you plant them in mulch; they need to be planted in soil. To ensure you've planted your plants or flowers correctly, give them a good tug on the lower stem. If they come out of the soil easily, you haven't planted them deeply or tightly enough.

Once you've tested your plants and ensured they're firmly in the soil, you can begin to lay down your mulch. Generally, two to four inches of mulch is how much you'll want to apply. Each season, if you're not planting annuals, reapply more mulch on top of what's left from last season, until the height is between two to four inches again.


Though it's easy to apply too much mulch, you'll want to avoid this as best as you can. Overdoing it with your mulch is bad for your plants, possibly causing root rot thanks to an excess of moisture and not enough aeration.

Also, avoid mulching close to your house. Any mulch laid down within a foot of your house could promote termites or other insect infestation.

Also take note of the soil type that will be lying beneath the mulch. Some areas of your landscape might have drainage issues with respect to the soil. Such areas should not be mulched, as the water retention properties of mulch will only make this drainage problem more of a headache.



Organic mulch will add nutrients to the soil, helping your plants better maintain their health.



**Now Open
Until 7pm**
*7 Days
per Week*

**Annuals, Perennials,
Flower Plants,
Hanging Baskets
& More**

8636 Reesor Rd • 905-471-5630

APPLYING YOUR MULCH

Before putting down any mulch, you'll

**Now
There's
More...**



Bonnie Stern is back with more HeartSmart recipes. They're nutritious and delicious!

Available at your local Heart and Stroke Foundation Office.



This message brought to you as a community service of The Economist & Sun

Design with Windows

Changing windows has become a dreaded but certain reality for many homeowners. The very windows that helped convince couples to buy their dream homes, have slowly been deteriorating over the years. Wood has become damp and spongy, paint no longer stays on, glass panes have fogged up, weather-stripping has come off, and they no longer keep out the elements.

This was the case with Joanne and Rob's Unionville home when they decided to replace the windows.

"We had to take everyone's opinions and try to sort them out for ourselves," says Rob. "By getting several quotes, we became more familiar with some of the window choices and options, so when it came to making a decision we felt we made an informed one."

The family picked a local company from Stouffville, Fieldstone Windows.

"Simply put, we felt comfortable with them," said Joanne.

"They seemed to know what they were doing and offered suggestions no one else had. Repairing brickwork, creating new openings, even picking a colour that better suited the house were all ideas we hadn't heard."

"Our products regularly featured on the hit TV Series My Parent's House on HGTV"



Fieldstone Windows Ltd.

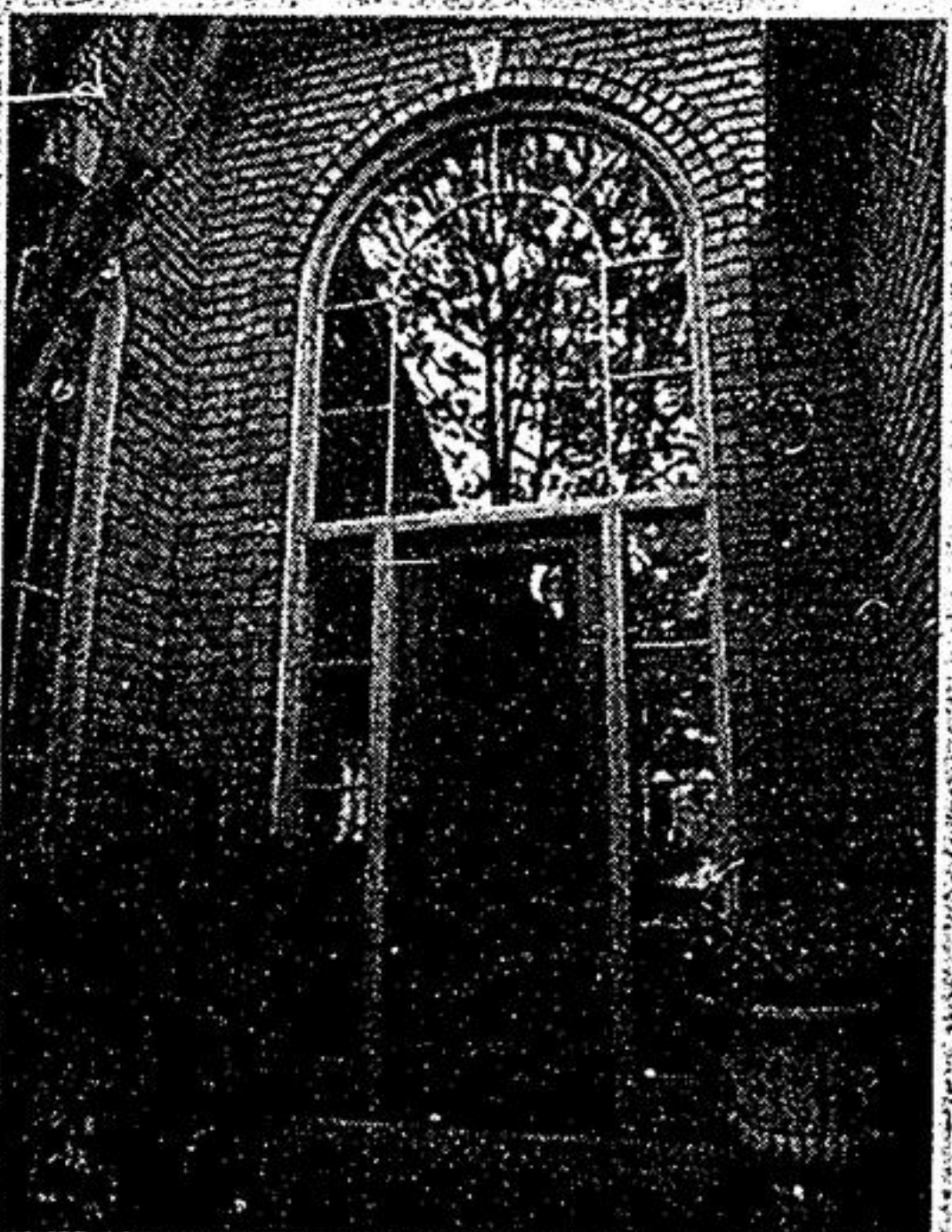
Phone: 905.640.9287

Toll Free: 1.866.202.0286

www.fieldstonewindows.com



The couple both agreed the biggest visual change was replacing the original standard height double doors with a more welcoming 8' tall door and sidelights. The door boasts a hand made wrought iron panel and matching grip-set.



"Some other changes included creating a novelty window in the kitchen backsplash and dressing up the dining room with french doors rather than the old sliding ones. Upgraded mouldings and 3-dimensional s.d.l. grills were the final touch. "We're thrilled with the results" says Joanne. "We get a lot of compliments"

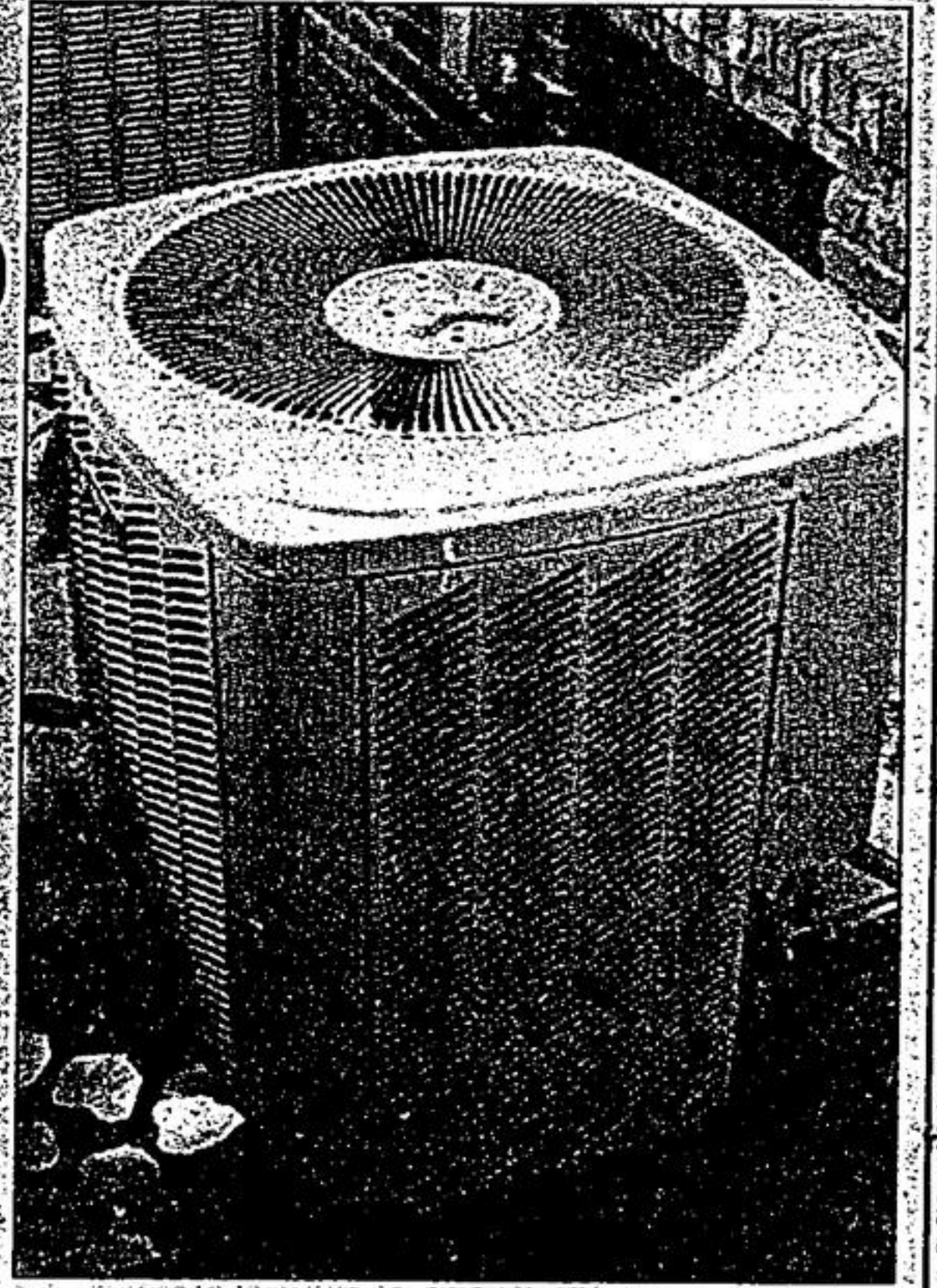
SPRING SPECIAL

SAVE 10%

On the
PURCHASE
of a
**NEW AIR
CONDITIONER**

Including Installation.
**Pool Heater
Start-Ups & Service
Also Available!**

We service all makes and models of air conditioners



Ringwood