

# CHEVROLET. CANADA'S #1 SELLING BRAND\*



## CHEVROLET SUPERSTARS — EVENT — NOW SHOWING

### TOP 10 CHEVROLETS STARTING UNDER \$20,000

For the latest information, visit us at [gmcanada.com](http://gmcanada.com), drop by your local Chevrolet dealer or call us at 1-800-GM-DRIVE. \*Based on combined P.L. Polk Canada, Inc. 2005 New Passenger Car and Light-Duty Truck Total Registrations in Canada.



**Uplander Cash Purchase Price \$19,998\***

- 3.5L 201 hp SFI Engine
- 4-Wheel Disc Brakes with ABS
- OnStar™ with 1-year Safe and Sound Plan

**Hwy:** 8.7L/100km • 32mpg  
**City:** 12.9L/100km • 22mpg\*

HIGHEST POSSIBLE U.S. GOVERNMENT FRONTAL CRASH SAFETY RATING

★★★★★

2006 Chevrolet Uplander received a five star rating for the driver and front passenger in the frontal crash test.\*



**HHR Starting from \$18,995\***

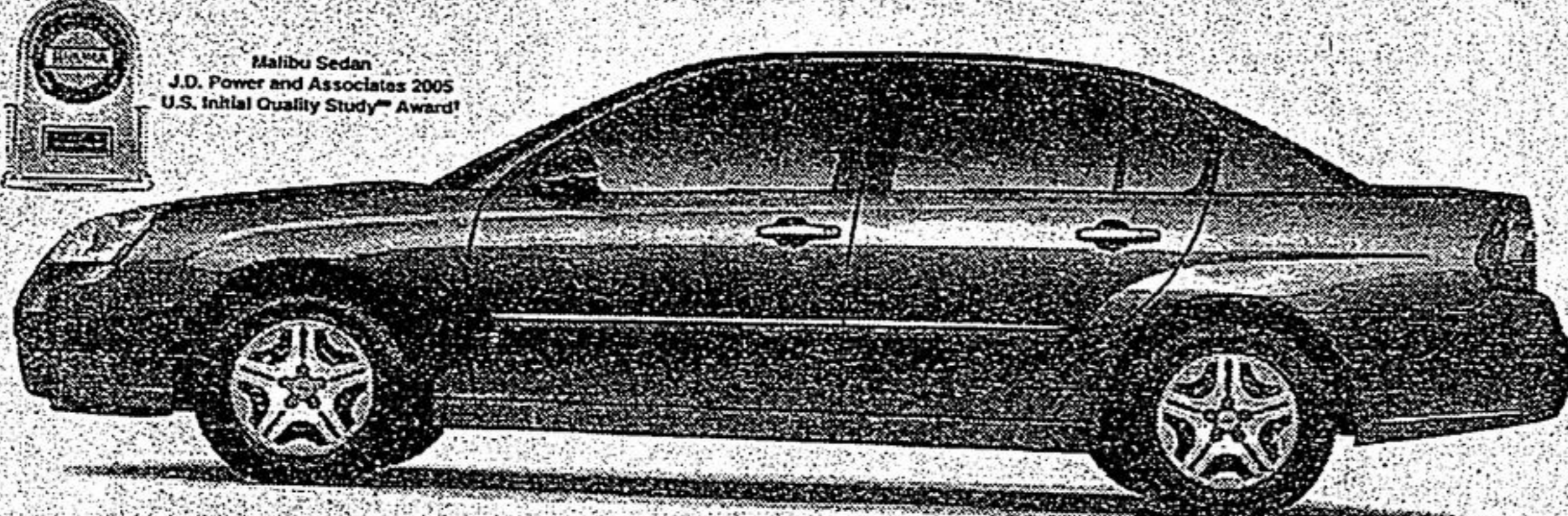
- 2.2L 143 hp ECOTEC Engine
- Air Conditioning
- 6-Speaker CD Stereo

**Hwy:** 6.4L/100km, 44 mpg  
**City:** 10.1L/100km, 28 mpg\*

HIGHEST POSSIBLE U.S. GOVERNMENT FRONTAL CRASH SAFETY RATING

★★★★★

2006 Chevrolet HHR received a 5-Star rating for the Driver and Front Passenger in the frontal crash test.\*



Malibu Sedan  
J.D. Power and Associates 2005 U.S. Initial Quality Study™ Award

HIGHEST POSSIBLE U.S. GOVERNMENT FRONTAL CRASH SAFETY RATING

★★★★★

2006 Chevrolet Malibu Sedan received the highest possible Government frontal crash safety rating.\*

**Hwy:** 6.8L/100km, 42 mpg  
**City:** 9.9L/100km, 29 mpg\*

**Malibu Starting from \$19,995\***

- 2.2L 144 hp ECOTEC 4 cyl. Engine
- Automatic Transmission
- Air Conditioning



**Optra® Cash Purchase Price \$14,425\***

- 2.0L 119 hp DOHC Engine
- CD/MP3 Playback
- Spoiler

**Hwy:** 7.1L/100km, 40 mpg  
**City:** 10.4L/100km, 27 mpg\*



HIGHEST POSSIBLE U.S. GOVERNMENT FRONTAL CRASH SAFETY RATING

★★★★★

2006 Chevrolet Aveo received the highest possible Government frontal crash safety rating.\*

**Hwy:** 6.2L/100km, 46 mpg  
**City:** 9.1L/100km, 31 mpg\*

**Aveo Sedan Starting from \$11,995\***

- 1.6L DOHC Engine
- 5-Speed Manual Transmission
- Tilt Steering



HIGHEST POSSIBLE U.S. GOVERNMENT FRONTAL CRASH SAFETY RATING

★★★★★

2006 Chevrolet Aveo received the highest possible Government frontal crash safety rating.\*

**Hwy:** 6.2L/100km, 46 mpg  
**City:** 9.1L/100km, 31 mpg\*

**Aveo® Cash Purchase Price \$11,995\***

- 1.6L DOHC Engine
- 5-Speed Manual Transmission
- Fog Lamps



**Optra Wagon Starting from \$15,130\***

- 2.0L 119 hp DOHC Engine
- CD/MP3 Stereo Playback
- 60/40 Split-folding Rear Seatback

**Hwy:** 7.1L/100km, 40 mpg  
**City:** 10.4L/100km, 27 mpg\*



**Hwy:** 10.1L/100km, 28 mpg  
**City:** 15.2L/100km, 19 mpg\*

**Silverado Regular Cab Cash Purchase Price NOW \$17,998\***

- Vortec 4300 195 hp V6 Engine
- 5-Speed Manual Transmission with Overdrive
- 40/20/40 Split-Bench Front Seat



**Cobalt Sedan Starting from \$14,710\***

- 2.2L 145 hp ECOTEC Engine
- 5-Speed Getrag Manual Transmission
- CD Stereo

**Hwy:** 6.1L/100km, 46 mpg  
**City:** 9.5L/100km, 30 mpg\*



**Cobalt Coupe Starting from \$14,710\***

- 2.2L 145 hp ECOTEC Engine
- 5-Speed Getrag Manual Transmission
- CD Stereo

**Hwy:** 6.1L/100km, 46 mpg  
**City:** 9.5L/100km, 30 mpg\*

VISIT YOUR ONTARIO CHEVROLET DEALER TODAY.



VALUE FOR THE WORLD YOU DRIVE IN.



Available on Uplander, Aveo, Optra, and Cobalt models.

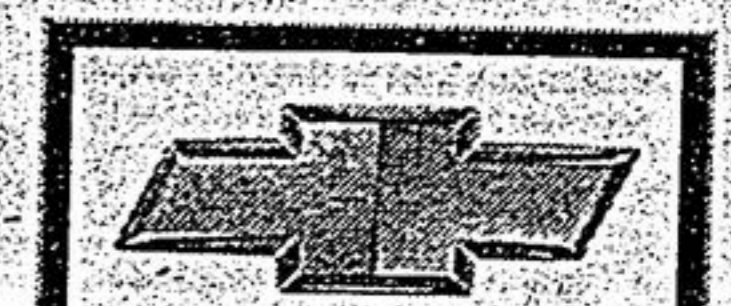


[chevroletsuperstars.gmcanada.com](http://chevroletsuperstars.gmcanada.com)



REWARD YOURSELF BY GIVING UP YOUR OLD CAR.

Get \$1000 off an eligible new GM vehicle when you send your old car to a better place. Visit [carheaven.ca](http://carheaven.ca) or visit your local GM dealer for details.



CHEVROLET

