

### COURTING POSSESSION

Stouffville St. Brigid Catholic School's Breanna Campeau (centre) battles Markham St. Patrick's Anne Ricci for possession of the basketball during an elementary school tournament last Saturday at St. Augustine Catholic High School. Caught with her back to the play is St. Patrick's Taylor McNeil.



STAFF PHOTO/SJOERD WITTEVEEN

# Jackpot O' Cash

March 13 - 17



Get in the Green

# \$15,000 in-cash

available to be won

Port Perry, ON • 905-985-4888 • 1-888-29-HERON

www.greatblueheroncasino.com • 535 slots • 60 Table Games

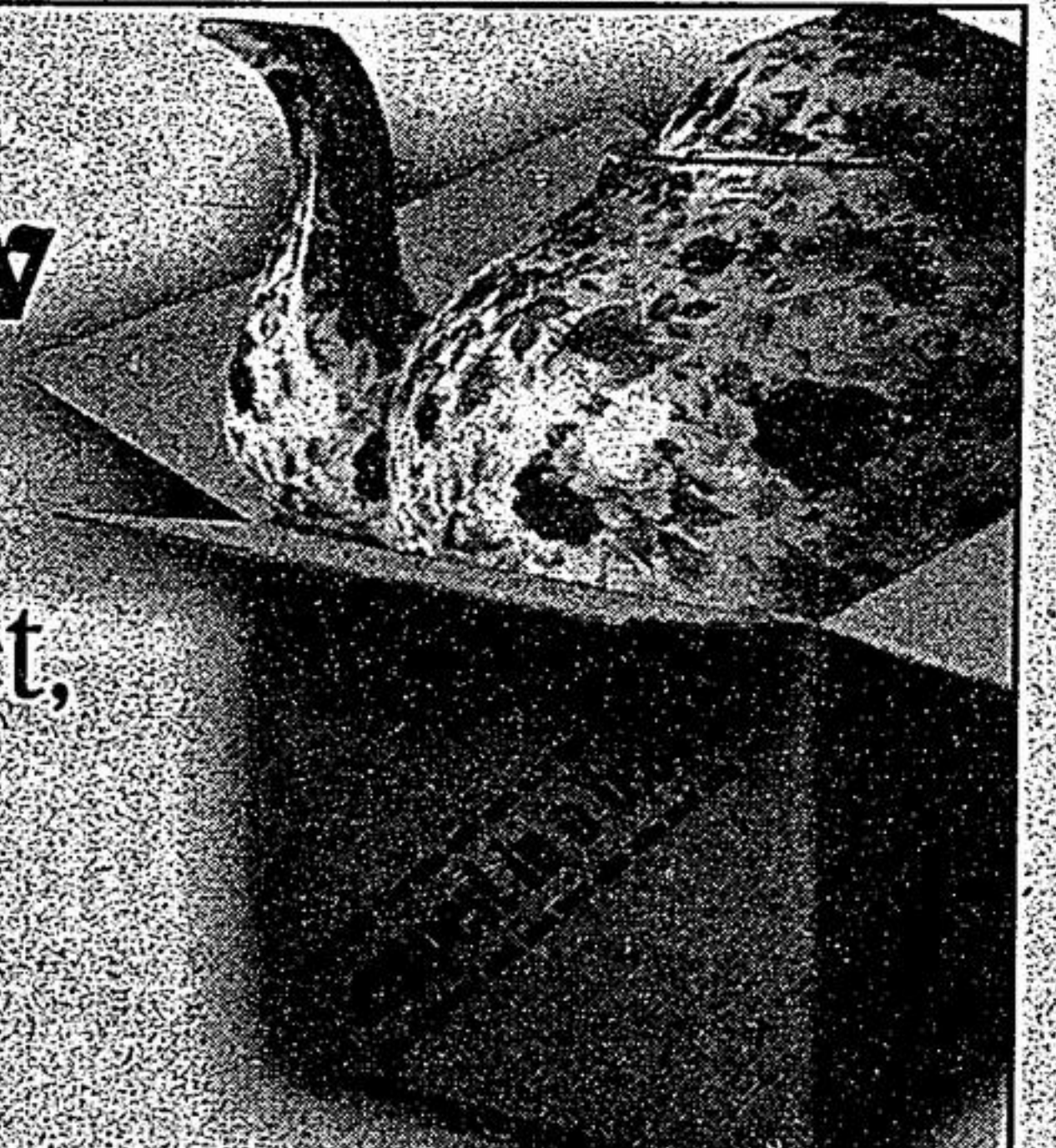
For rules and more details visit the Rapid Rewards Players Club Centre. Must be 19 years of age or older. No purchase necessary. License # C000014 BAAGWATING COMMUNITY ASSOCIATION The Ontario Problem Gambling Helpline 1-888-230-3505

## Now Open in Our New Location!

6242 Main Street, Stouffville  
(Across from the Gazebo)  
(905)640-8787

## tempest in a teapot

Gift Shoppe, Luncheon & Tea Room  
Come in and see all our New Spring Merchandise!



GREATEST ESCAPES

# Sears travel

In Store 1-866-359-7327 .ca

12 EQUAL MONTHLY INSTALLMENTS INTEREST FREE

BOOK NOW. TRAVEL. PAY LATER\*



Markville Centre (905) 946-8077

Visit the NEW SearsTravel.ca

# LONDON FROM \$92 /MONTH

EUROPE ESCAPES

SUN ESCAPES

CRUISE ESCAPES

**LONDON, ENGLAND**  
Montana Hotel Kensington (3+)  
8 days • June 7, 14 /06 • PACKAGE PLUS LONDON  
Standard Room • Flight, hotel, breakfast, transfers and more!  
\$1,099 OR \$92/month  
\* Taxes & Fees = \$185 TORONTO DEPARTURE  
Transat Holidays

**LONDON, ENGLAND**  
Royal National (2+\*)  
8 days • June 7, 14 /06 • PACKAGE PLUS LONDON  
Standard Room • Flight, hotel, breakfast, transfers and more!  
\$1,199 OR \$100/month  
\* Taxes & Fees = \$185 TORONTO DEPARTURE  
Transat Holidays

**VALLARTA NAYARIT, MEXICO**  
Occidental Allegro Nuevo Vallarta (3+\*)  
7 nts • Mar 27 /06 • All Inclusive • Guestroom  
\$1,137 OR \$95/month  
\* Taxes & Fees = \$263 TORONTO DEPARTURE  
Transat Holidays

**GRAND MEDITERRANEAN**  
Rome (Civitavecchia) Roundtrip  
Carnival Liberty™ • 12 days • July 30-Sept 4 /06  
Cat. 4A • Inside Cabin • Cruise Only • Request fare code CMO & receive up to US \$100 onboard credit per cabin!  
\$1,840 OR \$153/month  
\* Taxes & Fees = \$66 Carnival Cruise Lines

**LONDON, ENGLAND**  
Kensington Close Hotel (3+\*)  
8 days • June 7, 14 /06 • PACKAGE PLUS LONDON  
Standard Room • Flight, hotel, breakfast, transfers and more!  
\$1,199 OR \$100/month  
\* Taxes & Fees = \$185 TORONTO DEPARTURE  
Transat Holidays

**LONDON, ENGLAND**  
Shaftesbury Kensington Hotel (4\*)  
8 days • June 7, 14 /06 • PACKAGE PLUS LONDON  
Standard Room • Flight, hotel, breakfast, transfers and more!  
\$1,399 OR \$117/month  
\* Taxes & Fees = \$185 TORONTO DEPARTURE  
Transat Holidays

**ST. MAARTEN**  
Sonesta Maho Beach Resort & Casino (4\*)  
7 nts • Mar 25 /06 • All Inclusive • Guestroom  
\$1,667 OR \$139/month  
\* Taxes & Fees = \$220 TORONTO DEPARTURE  
Transat Holidays

**EASTERN CARIBBEAN**  
Miami Roundtrip  
Elation™ • 7 days • August 27 /06 • Cat. 4A  
Inside Cabin • Cruise Only  
\$659 OR \$55/month  
\* Taxes & Fees = \$81 Carnival Cruise Lines

\* Equal monthly installments and Pay Later offers are valid only when purchased on the Sears Card, on approved credit, and through Sears Travel with participating suppliers from January 1 to March 31, 2006. All applicable taxes will be charged to your Sears Card Account at time of booking. Payment options and exclusive offers valid on new bookings only and must be booked through an in-store Sears Travel location or at 1-866-359-7327. In the event you must cancel, the cancellation penalties as published in the participating tour operators and/or cruise lines brochures will be charged to your Sears Card Account on the cancellation date. Unless otherwise stated, optional financing programs do not qualify for Sears Club Points. Prices are valid at time of printing, are subject to availability and may change at time of booking. Payment options and plan details may be changed or discontinued at any time without notice. Local departure taxes are not included. † These rates are in CAD, include non-commissionable fee, per guest, based on double occupancy, capacity controlled and cruise only. Rates are for one individual bookings only, and are subject to change at any time without prior notice. All taxes and government fees are as indicated. Offer is non-transferable and has no cash value. If promo code is required to receive promotion, promotion is applicable to select Card and Liberty departures between 02/20/06 - 09/30/06. Maximum category purchase of \$4 is required. Not available for categories 6A and higher. Maximum non-refundable onboard credit of US\$100 per stateroom. Single occupancy bookings receive half of the onboard credit amount. Offer is not combinable with any other discount or promotional offer. Offer is valid for new international bookings only. Must book between 02/10/06 - 03/31/06. Some restrictions (including stateroom category availability) apply. Please request fare code CMO. Program is offered and operated by Inland, Coastal Holidays and Fun Sun Vacations. Ship's Hospitality, the Bahamas and Panama Package Rates shown are per person based on double occupancy, include all Early Booking Incentives, and are based on the designated departure date. Program is offered and operated by Inland, Coastal Holidays and Fun Sun Vacations. Ship's Hospitality, the Bahamas and Panama Package Rates shown are per person based on double occupancy, include all Early Booking Incentives, and are based on the designated departure date. Ship's Hospitality as per supplier's current 2005/2006 price brochures. See Sears Travel for complete details, terms & conditions. ©2006 Sears Canada Inc. & Sears Travel Services, Ltd. Reg. 2226498. Registered trademarks of Royal Bank of Canada. Used under license.

