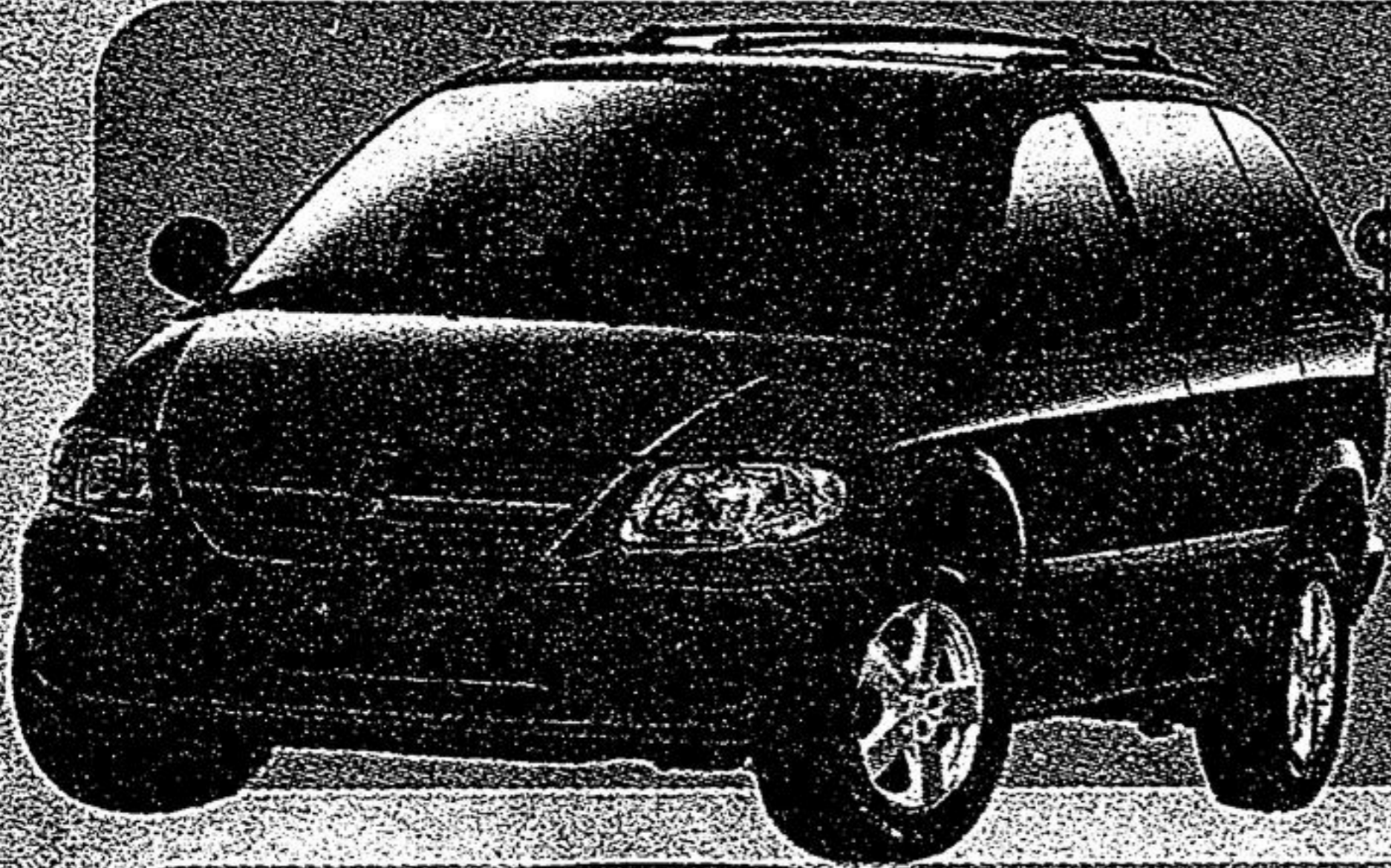


# SPECTACULAR SAVINGS!

TWO GREAT DEALERS SAME GREAT PRICE

**FIND A LOWER PRICE!  
WE'LL BEAT IT!**

**CALL FOR EVEN BETTER  
PRICES ON REMAINING 2005'S**



**2006 DODGE CARAVAN**  
**\$19,748\*** Or Lease **\$129\*** /month  
 For 27 months  
 With \$4,940 down or equivalent trade

**Features include:**  
 • 3.3 L 180 hp V6 • Air Conditioning • Power Windows & Locks • City: 12L/100km (23mpg) • Hwy: 8.2L/100km (34mpg)



**2006 DODGE RAM 1500 QUAD CAB SPORT 4X4**

Lease For **\$430\*** /month for 36 months  
 Lease APR 1.3%  
**0 DOWN PAYMENT - 0 SECURITY DEPOSIT**

**Refreshed features include:**  
 • New grille & fascia • Multi displacement System  
 • Coil over shock suspension • Instrument panel & more  
 • Instrument panel control 2-range, part-time shift-on-the-fly transfer case • Sport Appearance Group • AM/FM/CD stereo  
 • 4 wheel disc brakes with rear-wheel anti-lock  
 • City: 16.6L/100 km (17 mpg) • Hwy: 11.3L/100 km (25 mpg)

**Hemi**  
 • 5.7L Hemi® engine produces 345 hp & 375 lb-ft of torque • 3,357 kg (7,400 lb) maximum towing capacity • 345 hp 5.7L Hemi® MDS V8 engine • 5-speed automatic transmission



**2006 CHRYSLER 300**

Lease For **\$219\*** /month for 39 months  
 Lease APR 0.8%  
 With \$4,940 down or equivalent trade

**Features include:**  
 • 250 hp, 3.5L High Output V6 • 5 Speed Automatic Transmission with Auto/Stick • Air Conditioning • AM/FM/CD Stereo • All Speed Traction Control • Power Locks, Mirrors, Windows • 4 Wheel Disc Brakes w/Anti-lock & Electronic Stability Control

Limited time offers apply. Prices and payments exclude freight of \$1,200, license, insurance, PPSA, & applicable tax. 20,400 km allowable km's per year, excess km charge \$0.15/km.

**WOODBINE**  
 CHRYSLER JEEP

**8280 WOODBINE AVE. MARKHAM**  
 (SOUTH OF HWY#7, WEST SIDE, ACROSS FROM COSTCO)

**1-800-409-5074**

**LONGMAN'S**  
 MARKHAM DODGE CHRYSLER JEEP

**905-471-1500**  
 5426 Hwy #7., East,  
 Markham  
 (Hwy #7 and Laidlaw)

