



TOWN OF WHITCHURCH-STOUFFVILLE

"Country Lifestyle Close To The City"
www.townofws.com

HERE COMES SANTA CLAUS!

SANTA CLAUS IS COMING TO TOWN!

Mayor Sue Sherban & the Mayor's Youth Council invite you to come and visit Santa Claus and get a Christmas colouring book at the Silver Jubilee from 12:00 - 2:00PM on Saturday December 3rd!!
After visiting Santa find your favorite spot on Main Street to watch the Stouffville Kinsmen's Santa Claus Parade at 2:00PM!!!

SUPPLY OF AN ICE RE-SURFACER TENDER

WS-T-05-27

Tender documents are available at the Municipal Offices, Clerk's Department, 37 Sandiford Drive, 4th Floor, Stouffville. Tenders will be accepted until 3:00 pm, Wednesday December 14th, 2005.

If further information is required, please contact Mr. Rob Raycroft, Manager of Facilities and Parks at (905) 640-1910 ext. 290.

The Corporation of the Town of Whitchurch-Stouffville reserves the right to accept or reject any tender and also reserves the right to accept other than the lowest tender.

A CANDLELIGHT CHRISTMAS

WHITCHURCH-STOUFFVILLE MUSEUM

Create some wonderful holiday memories as you and your family experience the sights, sounds, smells and tastes of a 19th century Christmas. Costumed staff will lead you through our authentically decorated log cabin and Victorian farmhouse. Enjoy a horse-drawn wagon ride and then warm up with hot apple cider and traditional baking.

Date: Saturday, December 10, 2005
Tickets: \$15.00 for Adults, \$10.00 for Children
Tour Times: 6:00 p.m. OR 7:30 p.m. sharp

Space is limited, so tickets must be purchased in advance. To reserve your tickets, please call 905-727-8954, or toll free at 1-888-290-0337. Credit cards are accepted. The Museum is located at 14732 Woodbine Avenue, in the hamlet of Vandorf, 3 km north of the Bloomington Road.

*Special thanks to this year's sponsor,
Powell Contracting, of Gormley!!*

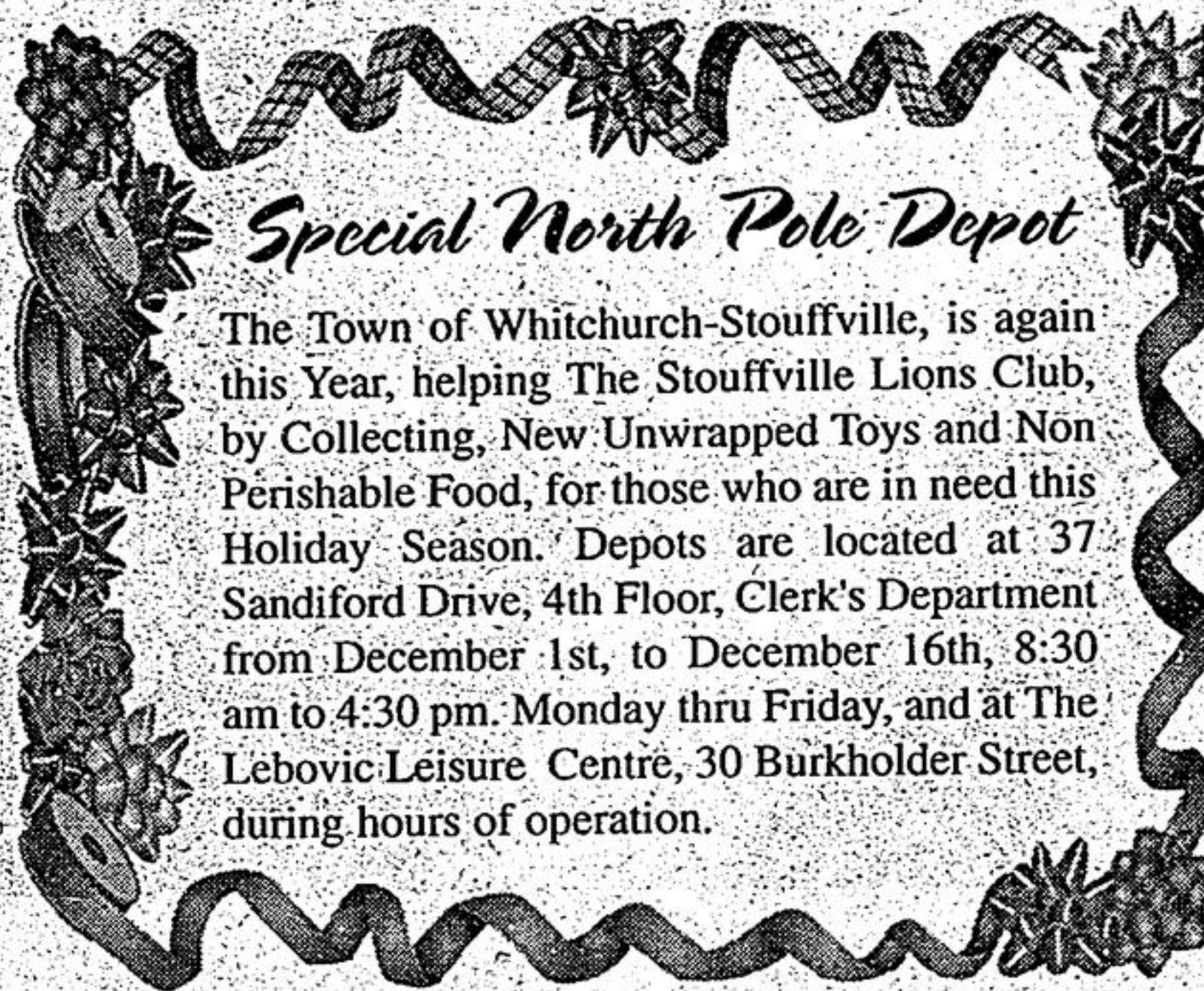
SHARE THE GIFT OF HEALTH

Gift Certificates are always available for any Membership, Program or Specific Value!

HOLIDAY SPECIAL! EFFECTIVE DEC. 1 - 31, 2005
One Month Fitness Gift Certificates or Memberships can be purchased!

Adult \$55* / Student or Senior \$45*

*add \$10 for Fitness Plus which includes Classes



Special North Pole Depot

The Town of Whitchurch-Stouffville, is again this Year, helping The Stouffville Lions Club, by Collecting, New Unwrapped Toys and Non Perishable Food, for those who are in need this Holiday Season. Depots are located at 37 Sandiford Drive, 4th Floor, Clerk's Department from December 1st, to December 16th, 8:30 am to 4:30 pm. Monday thru Friday, and at The Lebovic Leisure Centre, 30 Burkholder Street, during hours of operation.

WATER BILLS

DUE DATE: DECEMBER 9, 2005

WATER bills have now been mailed. For those who have not received their bills should contact the Municipal Water Department as soon as possible. Failure to receive a water bill does not eliminate the responsibility for payment of water or the penalty charges for late payment.

WATER PAYMENTS may be made by mail, at most Financial Institutions, banking machines, by telephone and internet or in person at the Town Office, 37 Sandiford Drive, 4th Floor. Banking fees may apply. After hours, water payments may be made in the drop box at the front west entrance door of the Imperial Building (37 Sandiford Drive).

The Town now offers a pre-authorized payment plan for water bills. Payments are electronically debited from your bank account on the due dates. Applications may be picked up from the Treasury Department or obtained from the Town's website www.townofws.com.

When paying water bills by Telephone, Internet and Bank Machines, please ensure that the **WATER ACCOUNT NUMBER USED FOR YOUR WATER PAYMENT IS ACCURATE.**

For inquiries, please contact Connie McVicar, Treasury Department, at extension 242.

TOWN OFFICE HOURS

MONDAY TO FRIDAY 8:30 A.M. TO 4:30 P.M.

905-640-1900 / 905-895-2423

37 Sandiford Drive, 4th Floor, Stouffville, ON L4A 7X5

PROPERTY ASSESSMENT NOTICES

Please note that the 2005 property assessment notice for the 2006 tax year have been mailed by the Municipal Property Assessment Corporation (MPAC). If you have any concerns with your new assessed value please contact MPAC directly at:

Telephone: 1-866-296-MPAC (6722)
Web site/email: www.mpac.ca
Fax number: 1-866-297-6703

ON STREET PARKING

PUBLIC NOTICE

In accordance with By-law 2002-85-TR, no person shall park any vehicle on any highway under the jurisdiction of the Town between the hours of 2:00am to 5:00am from and including December 1st to March 31st.
The co-operation of residents in order to facilitate winter maintenance activities on our streets.

PUBLIC SKATE STAFF WANTED

The Department of Leisure Services is now accepting applications for Public Skate Monitors and Cashiers. Weeknight and weekend hours are available - ideal for students and individuals looking to work a few hours a week. No experience necessary, but monitors must be able to skate. Interested individuals should have a current Standard First Aid or be registered for a course in the near future.

Please call Jen McEachen at 905-640-1910 ext. 288 for more information or drop by the Lebovic Leisure Centre to fill out an application.

@ PUBLIC LIBRARY

PROGRAMS

JINGLE BELL WALK STORY TIME
Thursday, December 1, 6:15-6:45pm
Admission is Free. All Ages

CHRISTMAS CRAFT
Friday, December 2, 10:30-11:30am
Admission is \$2/child. For ages 6+.

COOK WITH SANTA
Saturday, December 3, 10:15-11:45am
Admission is Free. For ages 0-6 years with caregiver.
Pre-registration is required.
Santa will present each child with a small gift.
Sponsored jointly with the OEYC.

SENIOR'S CHRISTMAS PARTY
Wednesday, December 7, 10:00-11:30am. Admission is Free.
Featuring Christmas goodies, tea, coffee, music, Christmas readings and a carol sing-a-long.

PRE-SCHOOL CRAFT
Wednesday, December 28, 10:15-10:45am
Admission is \$2/child. For ages 3-6 years

Whitchurch-Stouffville Public Library
30 Burkholder Street • 905-642-7323 (READ)
www.whitchurch-library.on.ca

2006 ANNUAL ACCESSIBILITY PLAN (DRAFT)

The Town of Whitchurch-Stouffville is currently inviting public comment on its 2006 Annual Accessibility Plan (Draft). Hard copies of the Accessibility Plan (Draft) are available from the Clerk's Department at the Town Offices, and an electronic version has been posted to the Town website at www.townofws.com. Please forward written comments to the Department of Leisure Services, Attn: Barb Scaife, or via e-mail to barbscaife@townofws.com, or call (905) 640-1910 ex. 292, by December 12, 2005.

The purpose of the Ontarians with Disabilities Act, 2001 (ODA) is to improve opportunities for people with disabilities and to provide for their involvement in the identification, removal and prevention of barriers to their full participation in the life of the province. The ODA mandates that all municipalities prepare annual accessibility plans. In the 2005 Annual Accessibility Plan, the Town of Whitchurch-Stouffville aims to describe barrier removal initiatives accomplished in 2004 and outline measures to be taken in 2005 to identify, remove and prevent barriers to people with disabilities.

DOG LICENSE FEES

PUBLIC NOTICE

At the Council meeting scheduled for Dec. 6, 2005, consideration will be given to amending By-law 2004-251-L1, Schedule of Fees for Dog Licences.

**"Enjoy an Old Fashion evening on Main Street
at the Festival of Lights, December 2nd 7:00PM - 8:30PM."**