

COMMUNITY CALENDAR

Community non-profit groups in Whitchurch-Stouffville are welcome to place their coming events in this column at no charge. Please send your notice to Community Calendar at the Stouffville Sun-Tribune, Box 154, Stouffville, L4A 7Z5 (e-mail jmason@ymg.com), or drop it off at the office, 34 Civic Ave., 3rd Floor. Deadline is Mondays at 6 p.m. Publication cannot be guaranteed but we will make every effort to ensure it is included. Please be brief.

VOLUNTEERS

Community Safety Village. Volunteers are needed for York Region Community Safety Village located at Bruce's Mill on Stouffville Road. The village teaches youngsters how to be safe at home, in case of fire and on the road. People from Newmarket, Aurora, Stouffville and Markham areas are needed. Call 905-830-0303 ext. 7798.

The Stouffville Spirit Jr. A Hockey Club needs volunteers to work on game nights and in its equipment department. Ideal for students and seniors. Call 905-642-2123 or e-mail spirithockey@hotmail.com

NOTICES

Massage therapy week: Massage Therapy Awareness Week is on until

Sunday. Seminars will be presented by members of the York Region Chapter of the Ontario Massage Therapy Association. Donations for local food banks will be accepted at participating clinics. Call 905-642-4237 or log on to www.OMTA.com

Girl Guide baked good: Girl Guide cookies (chocolate mint) are available now at \$4 per box. Call 905-640-8403 to order. Cookie sales support the Girl Guide program.

Totspot kids: This interactive, fun play group for parents, caregivers and their children from newborn to six years old has begun. The program runs Monday to Thursday from 9:15 to 11 a.m. at Stouffville United Church, 34 Church St. The first visit is free. Call 905-642-1351 for more information.

Parents and kids meet: The Stouffville Family Resource Centre at St. James Presbyterian Church, 6432

Main St. welcomes parents, grandparents and caregivers with children from newborn to six years old for song, stories, crafts, etc. every Wednesday and Thursday from 9 to 11 a.m. The program runs September to June. There is no charge. Call 905-471-1620.

SPECIAL EVENTS

TODAY

Library story time: The Whitchurch-Stouffville Public Library is hosting a Story Time for children ages three to six who can come to the library in their pyjamas. From 7 to 7:30 p.m. Call 905-642-7323 for more information.

Epilepsy seminar: Epilepsy York Region hosts an epilepsy memory and cognition seminar from 7 to 9 p.m. at York Regional Police District 4 headquarters in the Community Room. The address is 2700

Rutherford Rd. in Vaughan. Call 905-508-5404 to RSVP.

SATURDAY, OCT. 22

Schoolhouse artists: The sixth annual show and sale by the Schoolhouse Group of Artists continues Sunday at the Lemonville Community Centre, 13453 McCowan Rd., south of Bloomington Road. Exhibition hours are 10 a.m. to 4 p.m. Call 905-640-3965 for more information.

Haunted Halloween trains: The York-Durham Heritage Railway's Halloween trains run from Uxbridge and for the first time from Stouffville. From Uxbridge Station today at 5 p.m., 6:30 and 8 p.m. and from Stouffville GO Station Oct. 29 at 5, 6:30 and 8 p.m. Everyone is invited to dress in their Halloween costume. On the decorate trains, passengers can have their fortunes told, hear ghost stories

and take part in a colouring contest. There will be costume prizes and entertainment. Snack service available on the train. All children receive a loot bag.

Fare \$15 for all passengers. Tickets must be purchased in advance by calling 905-852-3696. Train wheelchair-accessible at Uxbridge only.

MONDAY, OCT. 24

Lions gather: The Lions Club of Stouffville meets at 6:30 p.m. tonight and every second and fourth Monday each month from Sept. to June for dinner. The meeting is at Latham Hall, Park Drive South, in Stouffville. Come as a guest and see how the club works. Call 905-640-4588.

THURSDAY, OCT. 27

Book talk: A discussion of *A Complicated Kindness*, hosted by Stouffville Community Mennonite Church and the Whitchurch-Stouffville Public Library, runs from 7:30 to 8:30 p.m. at the library. Admission is pay what you can. Call 905-642-7323.

SATURDAY, OCT. 29

Undergrounds Cafe: Canadian musician Jacob Moon performs original pop/rock/folk selections at Undergrounds Cafe on the second floor of EastRidge Missionary Church, 10th Line in Stouffville. Live music, desserts, flavoured teas and coffees in candle-lit cafe atmosphere. Performance starts at 7:30 p.m. For more information on Mr. Moon, log on to www.jacobmoon.com. Tickets \$10 per person. Call 905-852-3377.

Wealth Wisdom: A seminar on

Wealth Wisdom is being presented by Charlene Jones at the Whitchurch-Stouffville Public Library from 10 a.m. to 4 p.m. Cost of \$125 (plus GST). Preregistration is required. Call 905-642-7323 for more information.

FRIDAY, NOV. 4

Student music concert: The annual Student Music Scholarship Concert sponsored by St. James Presbyterian Church starts at 7:30 p.m. at Stouffville District Secondary School. Featuring choirs, bands, dancers and individual performers from local schools. All proceeds are returned to the participating schools for their music programs. Admission is \$4 at the door for adults and free for children 12 and under.

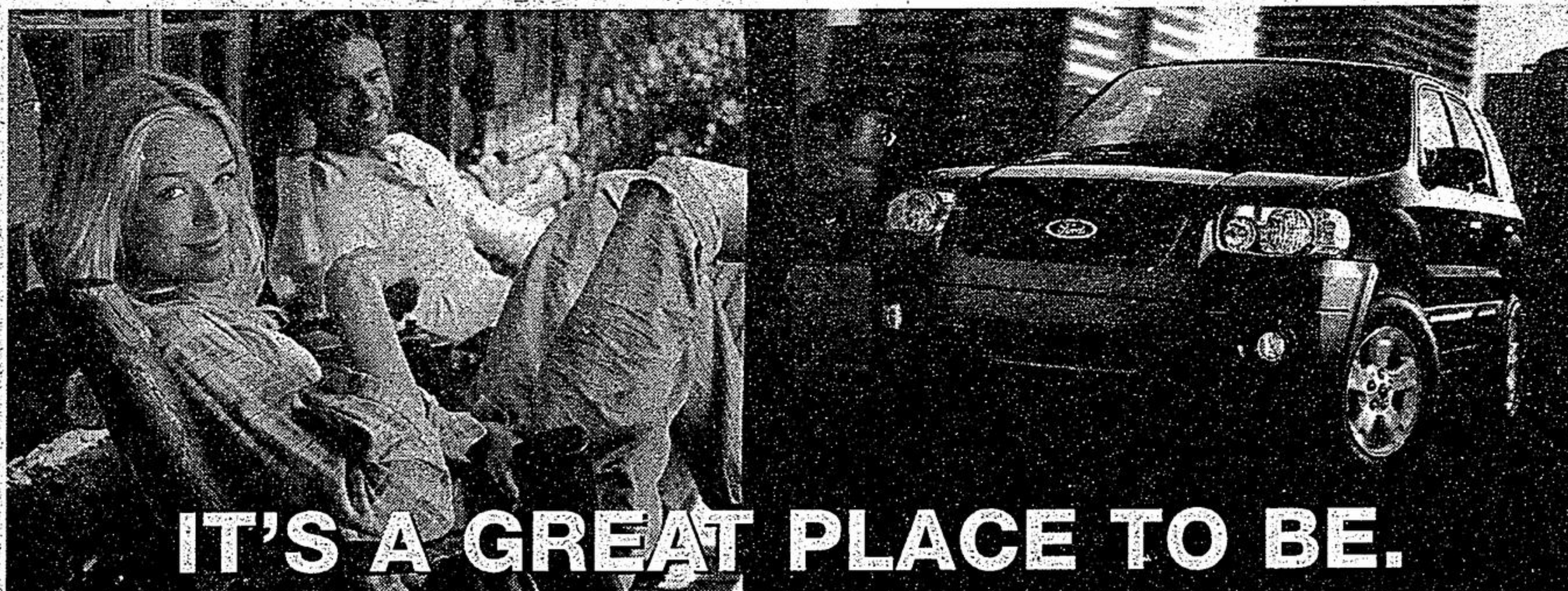
SUNDAY, NOV. 6

Legion remembrance: The Stouffville Royal Canadian Legion holds its cemetery remembrance service at 1 p.m. at the Stouffville Cemetery. A remembrance service follows in the Royal Canadian Legion hall at 2 p.m. The hall is on Ninth Line, north of Main Street.

TUESDAY, NOV. 8

MP visits: MP Lui Temelkovski is visiting the Silver Jubilee Seniors Club in Stouffville at 10 a.m. Everyone is welcome. Bring your questions, concerns and ideas. The Silver Jubilee Club is at Main and Market streets.

Adult skating: The Stouffville adult skating group begins its new season at the Stouffville Arena from 8:55 to 9:45 p.m. For ages 16 and up. Beginners welcome. Call 905-640-1149.



IT'S A GREAT PLACE TO BE.

ESCAPE. CANADA'S BEST-SELLING COMPACT SUV.*

Why? Take the Escape XLT. It features two-hundred-horsepower to start with — higher than most V6-equipped competitors, and comparable mileage too. And when you consider performance in a sport-utility vehicle, you can't ignore the "utility" part. That's why it has a standard full roof rack and split rear seats.

IT'S A SAFE PLACE TO BE.

The Escape XLT comes equipped with ABS brakes. Front fog lights. An occupant-sensing airbag system that adjusts to the size and weight of front-seat passengers. All standard equipment. And of course, it's available in all-wheel drive.

IT'S A COMFORTABLE PLACE TO BE.

None of that really means anything if you're not comfortable. So every Escape XLT comes with a power-adjust driver's seat, air conditioning, a six-disc CD changer, MP3 player, and something else designed to make you comfortable: a great price.

OR GET INTO A 2006 FORD ESCAPE XLS FWD FOR AS LOW AS **\$20,999****

2006 ESCAPE XLT FWD

• 200 HP V6 Engine • 16" Aluminum Wheels • Automatic Transmission • Keyless Entry • Air Conditioning • Power Windows/Doors/Side Mirrors • Perimeter Alarm

Lease for: **\$249** WITH **0.9%** APR

per month, 36 month with \$3,595 down or EQUIVALENT TRADE. Plus freight \$1,100. \$0 Security with the purchase of Wear Care!

DOWNPAYMENT	MONTHLY PAYMENT
\$2500	\$280
\$1000	\$323
\$0	\$351

STEP UP TO A 4x4 FOR \$19 MORE A MONTH.



XLT model shown with optional equipment.

SEE FOR YOURSELF. COMPARE THE FORD ESCAPE WITH OTHER COMPETING VEHICLES AT WWW.FORD.CA.

THE WORLD'S FIRST FULL-HYBRID SUV. Visit your Ford store and find out how Escape Hybrid gets up to 970km per tank!†



Built for life in Ontario

*BASED ON 2005 SALES. **MSRP. EXcludes freight, taxes, license, insurance, administration fees and all applicable taxes. †Based on 2005 EPA estimates. ‡Based on 2005 EPA estimates. ††Based on results issued from the Escape Hybrid "One Tank Challenge". All offers are mutually exclusive and cannot be combined. Some conditions may apply to the Graduate Recognition program. May not have sufficient vehicles in-stock, factory order may be required. Dealer may sell or lease for less. Limited time offers. Others may be cancelled at any time without notice. See Dealer for details. Ontario FIDA P.O. Box 2000, Oakville, Ontario L6J 5E4

CCAC COMMUNITY CARE ACCESS

Centre of York Region

We're here for you...
 Coming out of hospital? Suffering an illness or injury?
 Need personal care to maintain your independence?
 Are you eligible for health care at home? Call the
 CCAC of York Region at **1-888-470-2222**
 This message brought to you as a community service of
 The Economist & Sun/Tribune



SOCCER MEETING

The Whitchurch-Stouffville Soccer Club invites all interested parties to its annual general meeting **tonight, at 7:30 p.m.** at the Lebovic Leisure Centre. This is a great opportunity to ask questions and raise concerns.
For more information 905-640-1800