

LOBSTERFEST

Fresh East Coast Lobster Daily

Tuesday, October 18, to Saturday October 22, the Corner House presents the last LobsterFest of 2005. Fresh, East Coast Lobster prepared in four mouthwatering ways:

- ★ Steamed with Clarified Butter
- ★ Baked with Thermidor Sauce (Brandy & Mustard)
- ★ Broiled with our Special Spicy Herb Butter or
- ★ Bonne Femme (White Wine & Mushrooms)



6403 Main Street, Stouffville. For RESERVATIONS please call 905.640.8494. www.thecornerhouse.ca

SPOOKTACULAR SAVINGS

3 DAYS ONLY
Oct. 20, 21, 22

DON'T MISS OUT ON THESE DEALS!

2005 DEMO CLEAROUT

INCREDIBLE SAVINGS ON REMAINING BRAND NEW 2005's

0% FINANCING AVAILABLE & CASHBACKS

2006 Sonata GL

- 2.4 Litre • 162 hp • 5 speed • Air
- P-Group • Keyless • Alarm • 6 air bags and more.

Special Introductory Cash Price From

\$21,900



2006 Tucson GL

- 2 Litre • 140 hp • 5 speed • P-Group
- AM/FM/MP3 • Air bags and more.

Special Introductory Cash Price From

\$20,595



*See Dealer for Details

MARKHAM HYUNDAI

4641 HWY #7, MARKHAM (at Kennedy)

SHOWROOM HOURS:

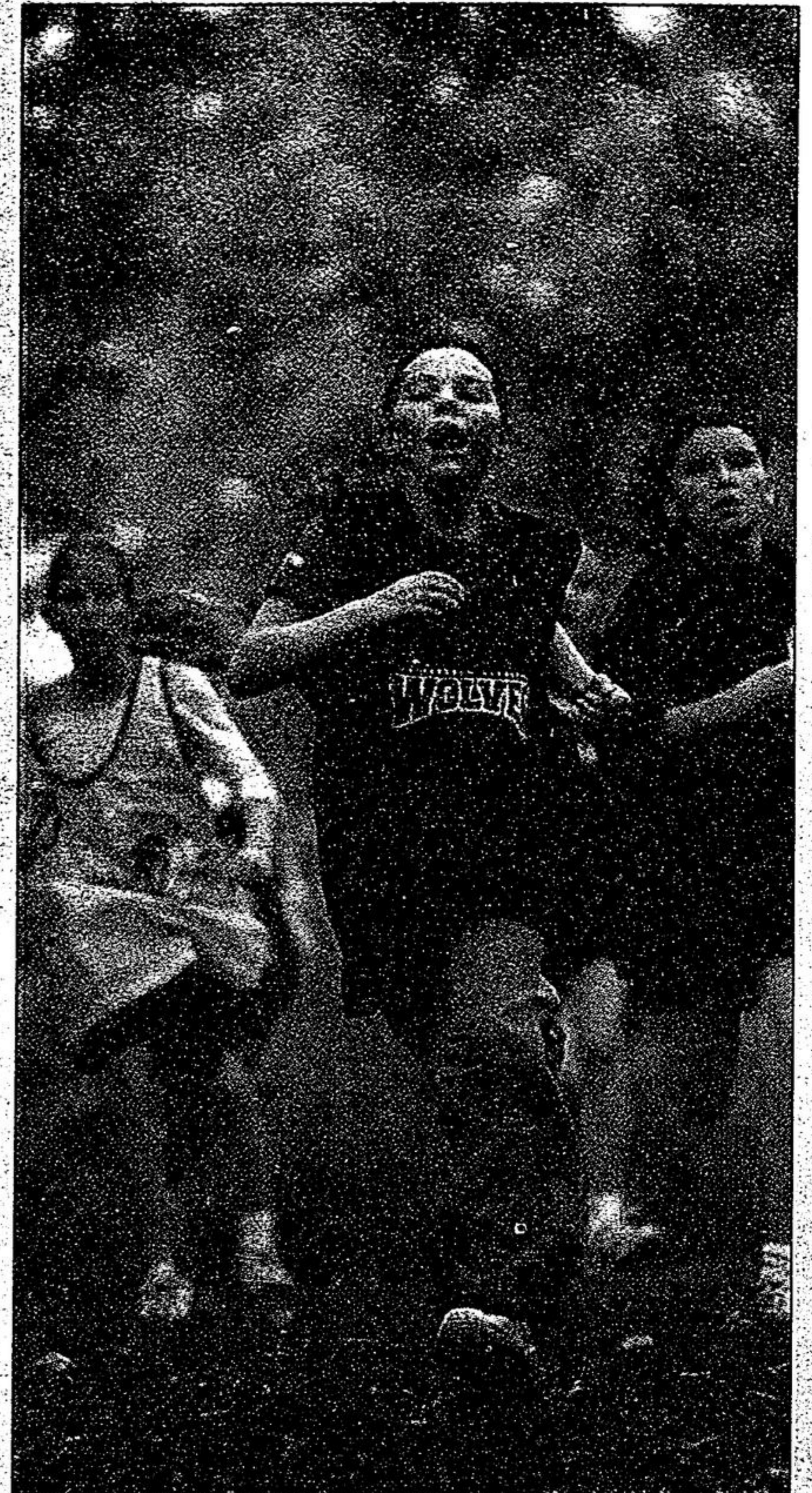
Monday-Thursday
9a.m.-9p.m.
Friday-Saturday
9a.m.-6p.m.

SALE HOTLINE

905-948-0080



Wolf on prowl



STAFF PHOTO/MIKE BARRETT

Grade 6 student Ashley Johnston of the Whitchurch Highlands Public School Wolves heads for the finish line at a York Region public elementary schools cross-country meet at Bruce's Mill Conservation Area last week.

642-5111 **852-6711**

Durham Steam Cleaning

LOOSE RUGS
BROADLOOM
UPHOLSTERY
3M Scotchguard

Whittamore's PUMPKINLAND & FALL TIME

HARVEST FESTIVAL WEEKENDS
Every weekend in October from
10 am to 5 pm General Admission

1,000's of Pumpkins	Corn Maze
Farm Animals	Straw Maze
Sand Toy Lot	Straw Jumps
Balloon Typhoon	Straw People
Kiddies Corn Maze	Log Walk
Milking Cow & Goat	Nature Trail
Wagon Rides	Face Painting
Friendly Haunted Forest	Pumpkin Cannon

Our Snack Shack will be open and serving hot dogs, farm fresh fries and hot apple cider.

Bring this ad to Pumpkinland and receive **1 FREE \$6.00 admission.**
Must be accompanied by an adult. One admission per family please. Not redeemable for cash.

OPEN DAILY TIL HALLOWEEN

www.whittamoresfarm.com • 905-294-3275
8109 Steeles Ave. E., Markham
6 km east of Markham Road (Hwy. 48)