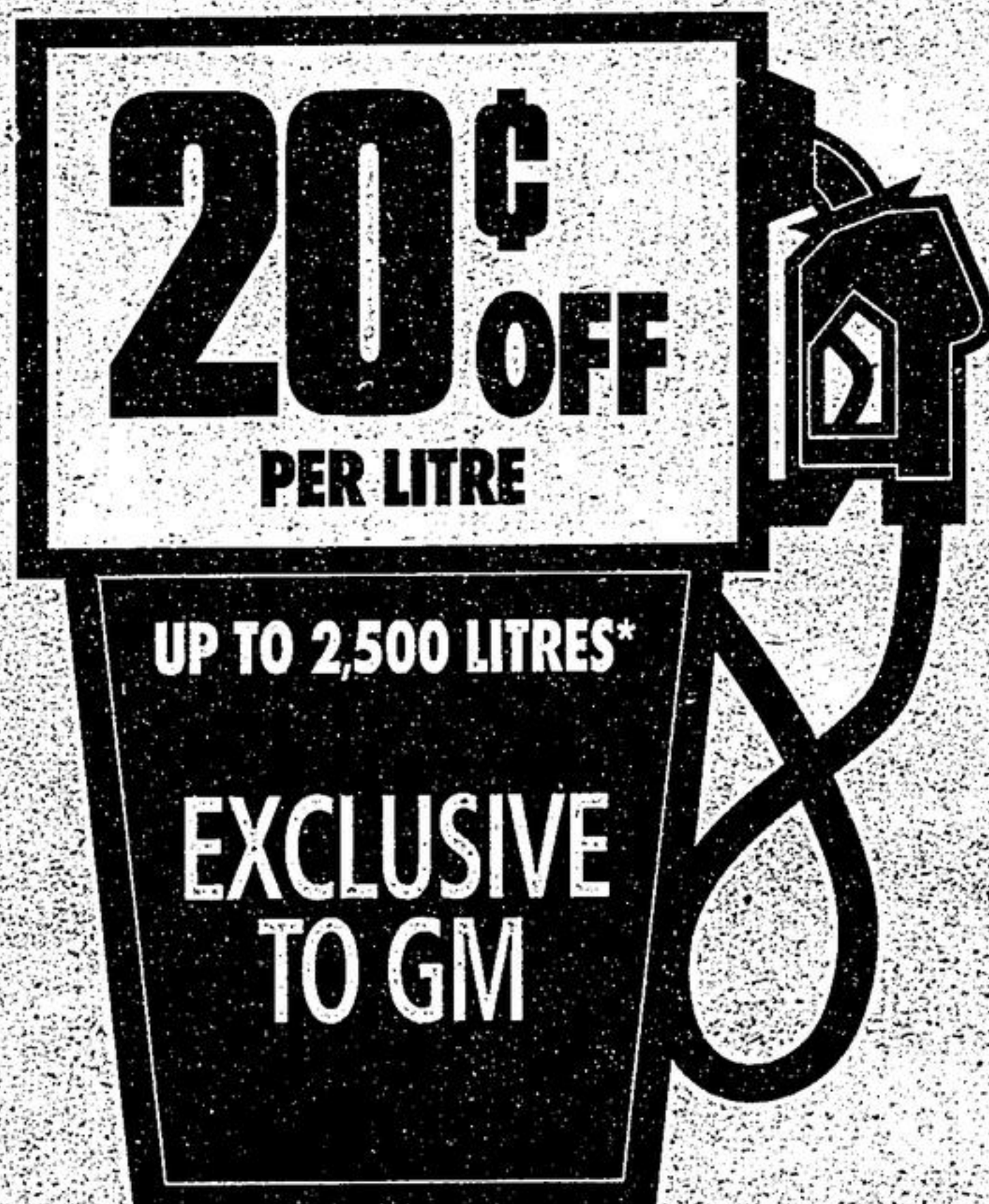


CHEVROLET  FOR ALL LIFE'S ROADS

2005 CHEVROLETS ARE GOING, GOING... ALMOST GONE.

AND NOW THEY'RE MORE FUEL EFFICIENT THAN EVER.

GET 20¢ OFF 2500 LITRES
OF GAS ON VIRTUALLY
ALL REMAINING
2005 MODELS
BEFORE THEY'RE GONE.



Visit your Ontario Chevrolet Dealer today.



2005 MALIBU



2005 UPLANDER



2005 OPTRA



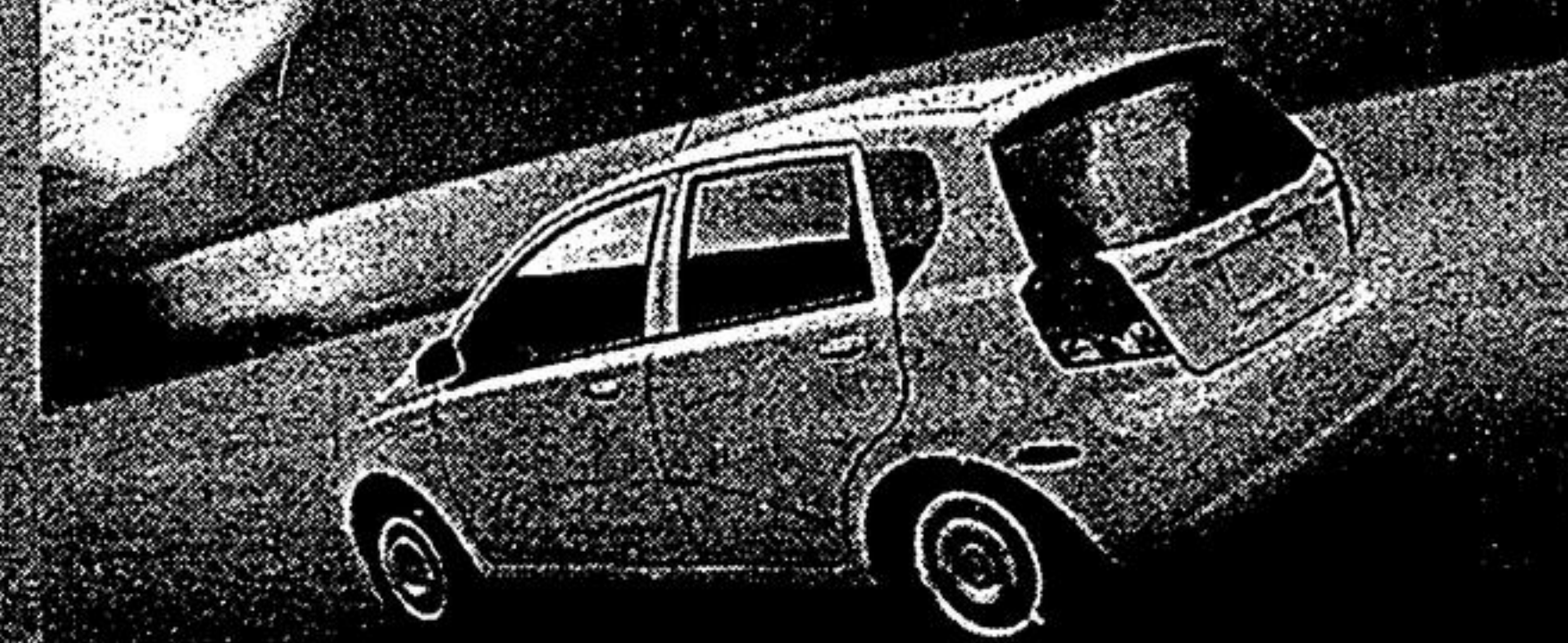
2005 COBALT



2005 SILVERADO



2005 AVALANCHE



2005 AVEO

For the latest information, visit us at gmcanada.com, drop by your local Chevrolet dealer or call us at 1-800-GM-DRIVE. *With purchase or lease of virtually all 2005 new or demonstrator in-stock models delivered between October 1 and October 31, 2005, inclusively and with payment of an additional \$0.01, customers receive a Preferred Price card. The \$0.20 discount includes applicable taxes. Cards valid as of 72 hours after delivery and until August 31, 2007, or until 2500L. are used up, whichever comes first. Cards are valid only at Petro Canada locations and other approved locations, and are not redeemable for cash. All 2005 vehicles are eligible except the following models: Medium Duty Trucks (including GMT560 Family 283 & T11 and W-Series); GH Vans; HUMMER; Cadillac; SAAB. Offers apply to qualified retail customers in the Ontario Chevrolet Dealer Marketing Association area only (including Northwestern Ontario). Dealer trade may be required. Dealers are free to set individual prices. Limited quantities of 2005 models available. Limited time offer, which may not be combined with other offers. See your dealer for conditions and details. *Warranty based on 5-years or 100,000km, whichever comes first. OnStar uses existing emergency service providers as well as cellular and satellite technologies. Vehicle electrical system needs to be operating for features to function properly. See your dealer for conditions and details. ®Registered trademark of General Motors Corporation. TD Canada Trust licensed user of mark. ®Trade-mark of The Toronto-Dominion Bank.