

Our writer mounts a mighty machine

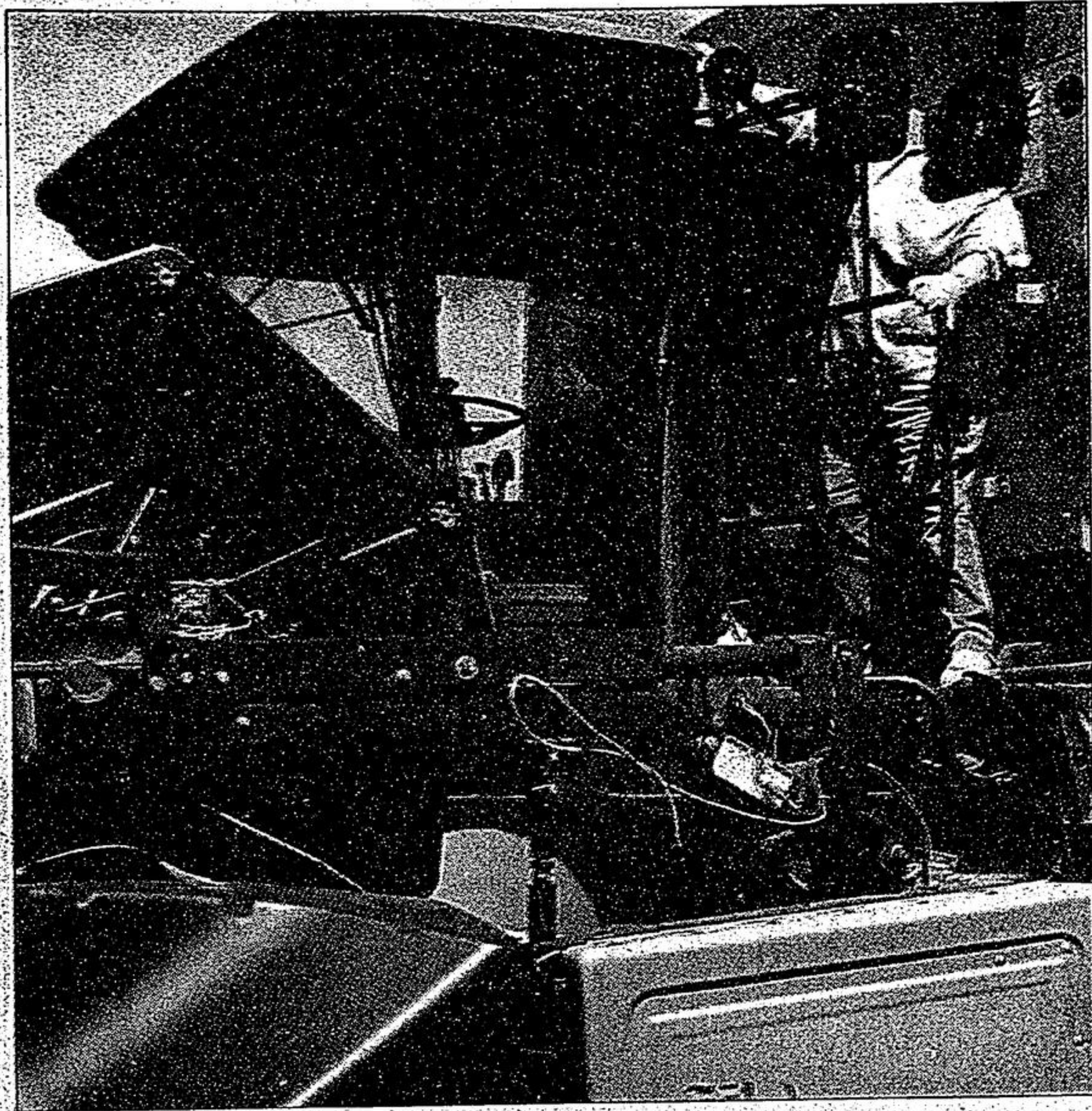


PHOTO BY GLEN MOREHOUSE

Living columnist, Ruth LeBlanc prepares to help combine wheat on Don Taber's Ninth Line farm.

— Where I Live —

Need local radio? Just whistle



Bruce Stapley

The first time I heard the idea of a radio station for Whitchurch-Stouffville was during the 2003 mayoralty campaign when dark horse candidate Randy Mole aired the concept at an all candidates meeting at Latcham Hall.

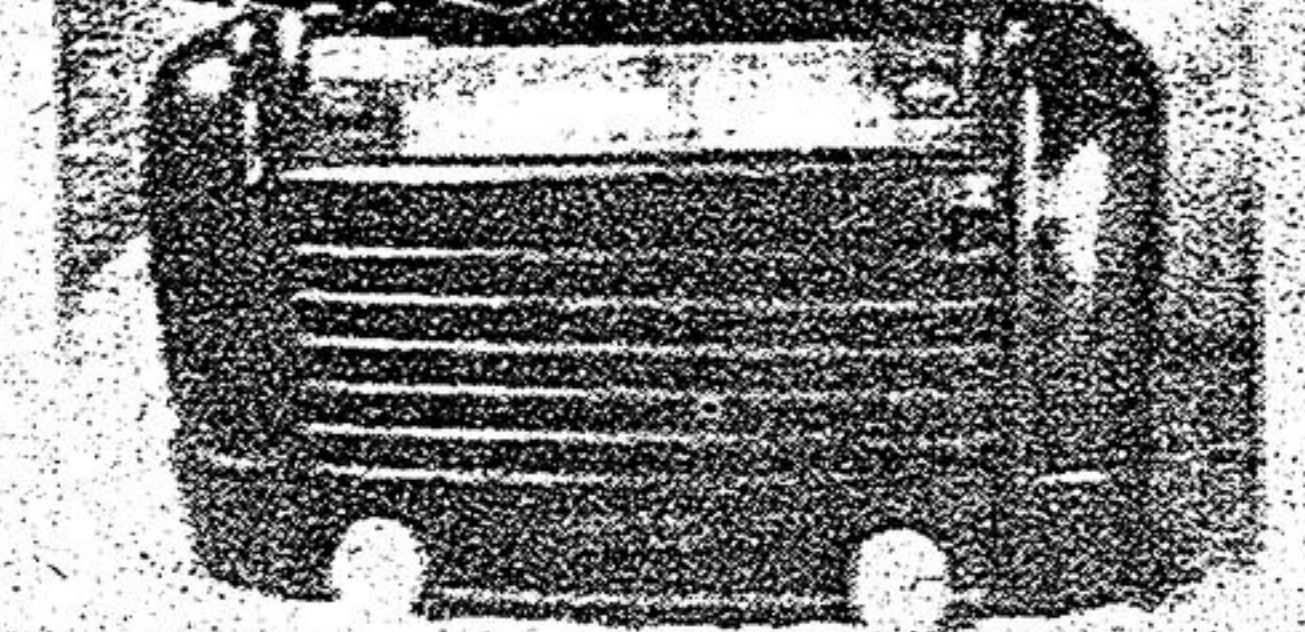
'If all goes according to plan, WhiStle Radio will hit the airwaves within the next six months.'

Randy pitched the scheme with unbridled enthusiasm. He suggested it would be a project the whole town could buy into, providing an outlet for teens, adults and seniors who all share a yearning to do something creative and original. When Randy ended up third in a three horse race, I figured that would be the last we would hear of his inspired idea.

Two years later, Randy's vision is on the verge of taking flight. If all goes according to plan, WhiStle Radio will hit the airwaves within the next six months. It has already made its debut with a smattering of online pod casts. The station boasts an impressive logo, consisting of the words WhiStle Radio - About people you know. By people you know. The backdrop is an old radio.

While there are still several more miles to go and some glitches to be worked out, WhiStle

WhiStle Radio



station manager Jim Priebe is confident the concept will be up and running on schedule. I called Jim the other week to offer both my congratulations and support. During our conversation, ideas came gushing forth like a geyser. WhiStle, which of course is a shortened, stylized version of Whitchurch-Stouffville, is to be a small town version of the CBC. There will be something for everyone on this not-for-profit endeavour, Jim explained. The station is to offer a wide variety of music, including live local youth bands. A review of weekly town council meetings and other programs of local political relevance could be served up. Shut-ins might get the chance to listen to a rotating live Sunday morning church service. The town library could be invited to use the station to announce the arrival of exciting new titles. And of course Spirit home and away games would be a draw. A program highlighting the town's places of historical interest could be well received. The possibilities are endless.

Somewhere out there, Randy Mole has to be flashing an ear to ear grin.

Bruce is the sales rep for Whitchurch-Stouffville LIVING. You may reach him at bstapley@sympatico.ca.

VISIT REESOR FARM KITCHEN

With the arrival of fall, enjoy our home made pumpkin pies and apple pies. It's not too early to order your pies for Thanksgiving.



Kitchen Hours:

Mon.-Fri. 9am-6:30pm • Sat. 9am-5pm • Closed Sundays

100 Ringwood Dr., Stouffville

100 Meters South of Randy's Appliances

(905) 640-2270 www.reesorfarmkitchen.com

FALL DECORATING ITEMS

- Garden Mums
- Straw Bales
- Corn Stalk Bunches
- Pumpkins, Pumpkins Pumpkins!



REESOR FARM MARKET

MARKET HOURS: Mon.-Sat. 9am-6:30pm • Closed Sundays

10825 Ninth Line, Markham

www.reesorfarm.com

CHEPACK'S COUNTRY MARKET



Hardy Mums!
100's to
Choose from

Fall Decorating
Materials

"Local Crafts & Old Stuff"
Exclusive Distributor of
**KRISTA'S
BIRDS & BUGS**

"New Customers Welcome"

9th Line at 19th Ave. 905 640-1819
(1 Road South of Stouffville Rd.)

MOLLER INSURANCE

Home ★ Auto

905-642-2745

64 Sandiford Drive, Unit 1,
STOUFFVILLE

Drs. McDowell & Genin are pleased to announce the association of Dr. Melanie de Jesus with our practice.



Drs. McDowell and Genin
Optometrists • 6085 Main St. • 905 642-3937